



Fairfields

A stylish collection of 3 bedroom homes


Perfect for modern living

Located in the bustling location of **Calcot, Reading** are a stylish collection of 3 bedroom homes coming soon to the exciting new **Fairfields development**.

Each newly-built home comes complete with a modern fitted kitchen with a built-in oven, hob and extractor, stylish open plan living/dining and a downstairs cloakroom. Also benefitting from three spacious bedrooms, stylish bathroom suite, private enclosed garden laid to lawn and two allocated parking spaces.



-  **The Ploughwright**
-  **The Tillman**
-  **Parking spaces**

 **Plots 43, 44, 45**
Clover View,
Calcot,
Reading,
RG31 7GA



Plot 46
Hedgehog End,
Calcot,
Reading,
RG31 7EY





The Ploughwright

3 bedroom semi-detached
Plot 43*, 46

3  1  2 

Room

Kitchen	3.4m x 3.1m
Living/dining room	4.8m x 5.1m
Master bedroom	4.8m x 2.8m
Bedroom 2	2.6m x 4.7m
Bedroom 3	2.2m x 3.6m






* Mirrored plot S Storage

We operate a policy of continuous product development and individual features such as windows and elevational treatments may vary. Consequently, particulars contained within this document should be treated as general guidance only. They do not constitute a contract, part of a contract or a warranty. Computer generated images and photographs are for illustration purposes only and may not accurately depict individual plots. Dimensions provided are for general guidance and are not intended to be used for carpet sizes, appliances, spaces or items of furniture. All dimensions are maximum.

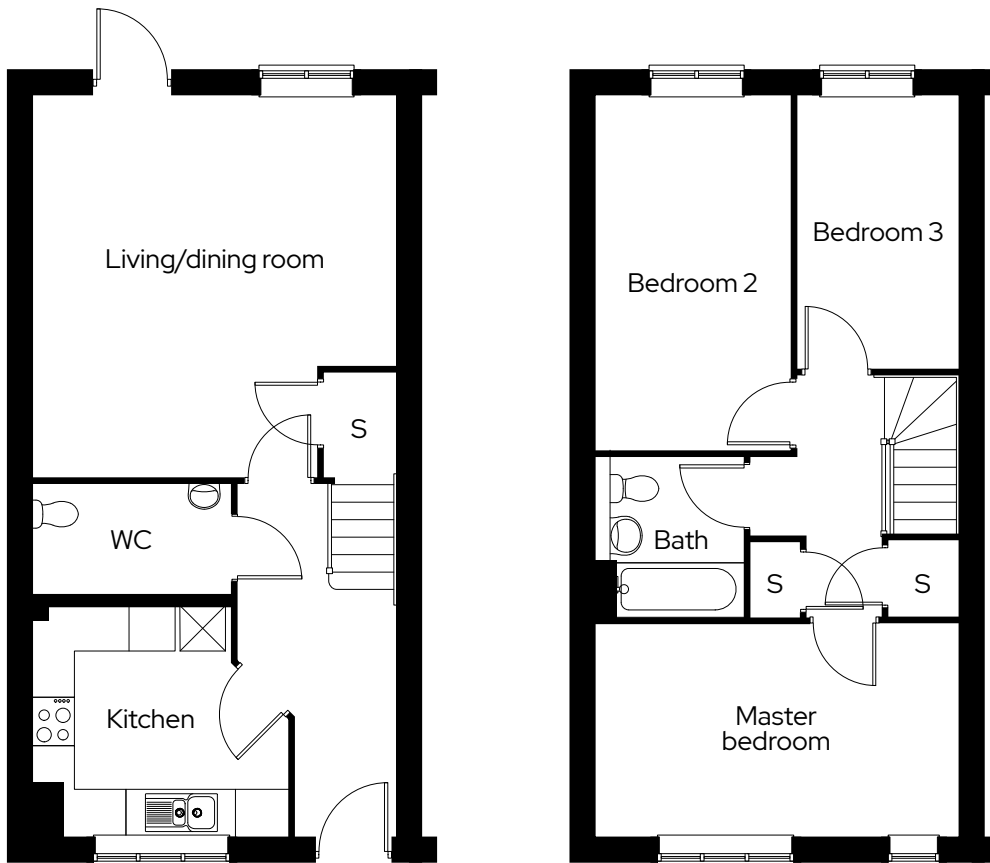
The Tillman

3 bedroom semi-detached
Plot 44*, 45

3  1  2 

Room

Kitchen	3.4m x 3.1m
Living/dining room	4.8m x 5.1m
Master bedroom	4.8m x 2.9m
Bedroom 2	2.6m x 4.7m
Bedroom 3	2.2m x 3.6m



* Mirrored plot S Storage

We operate a policy of continuous product development and individual features such as windows and elevational treatments may vary. Consequently, particulars contained within this document should be treated as general guidance only. They do not constitute a contract, part of a contract or a warranty. Computer generated images and photographs are for illustration purposes only and may not accurately depict individual plots. Dimensions provided are for general guidance and are not intended to be used for carpet sizes, appliances, spaces or items of furniture. All dimensions are maximum.

Get in touch

0300 330 0718

To find out more about shared ownership and the homes we offer, get in touch today.

→ sovereignliving.org.uk

Head office

Sovereign House
Basing View
Basingstoke
RG21 4FA

As one of the UK's leading shared ownership providers, Sovereign is passionate about giving everyone the opportunity to own their own home.

Our highly dedicated sales team has already helped thousands of people step onto the property ladder and our profit with a purpose principle means we can continue to help thousands more. Established, experienced, and affordable, we are proud to help more people live where they love.