



Hawthorns

A stylish collection of 2 & 3 bedroom homes



Country Living

Sovereign Living is excited to announce Hawthorns, a brand new development of 2 and 3 bedroom homes in Aston, Oxfordshire.

Located in the small village of Aston, situated within the district of West Oxfordshire, the village has a small selection of local amenities including a general store, public house and post office.

These beautiful new homes come complete with a fitted kitchen with oven, hob and extractor, a stylish bathroom suite, enclosed rear garden and allocated parking.



-  **The Hatchery**
-  **The Potters**

Hawthorns,
Cote Road,
Aston,
Bampton,
Oxfordshire





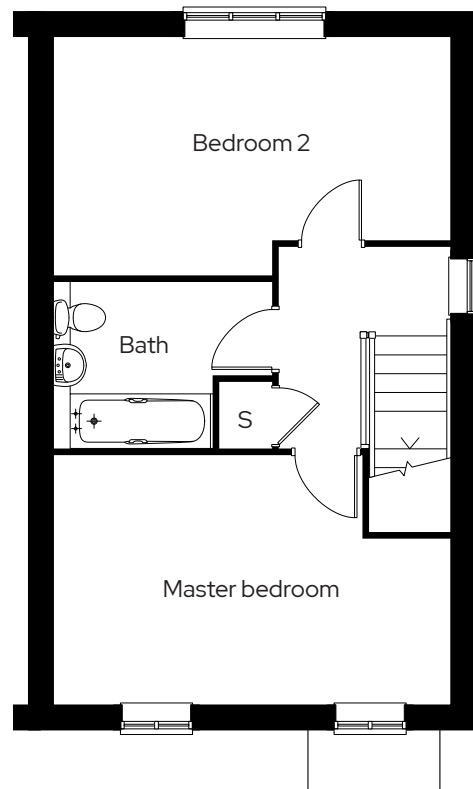
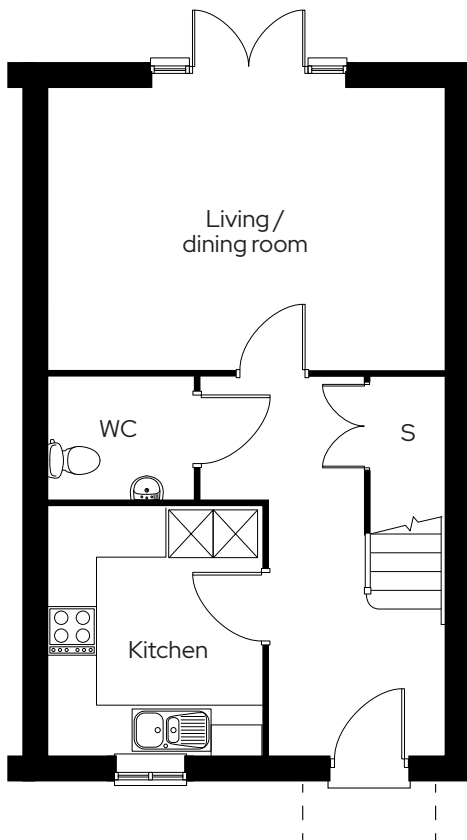
The Hatchery

2 Bedroom semi-detached
Plot 37* 38

2  1  2 

Room

Living/dining room	5.1m x 3.5m
Kitchen	2.7m x 3.1m
Master bedroom	5.1m x 2.5m
Bedroom 2	5.1m x 3.3m



* Mirrored plot S Storage

We operate a policy of continuous product development and individual features such as windows and elevational treatments may vary. Consequently, particulars contained within this document should be treated as general guidance only. They do not constitute a contract, part of a contract or a warranty. Computer generated images and photographs are for illustration purposes only and may not accurately depict individual plots. Dimensions provided are for general guidance and are not intended to be used for carpet sizes, appliances, spaces or items of furniture.

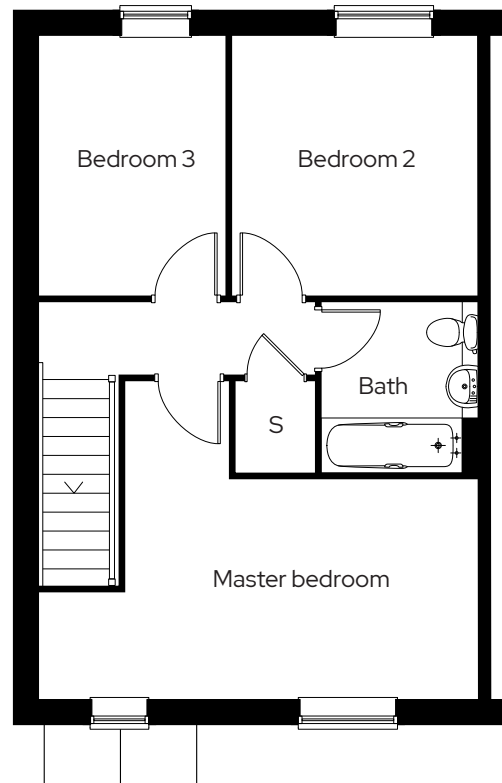
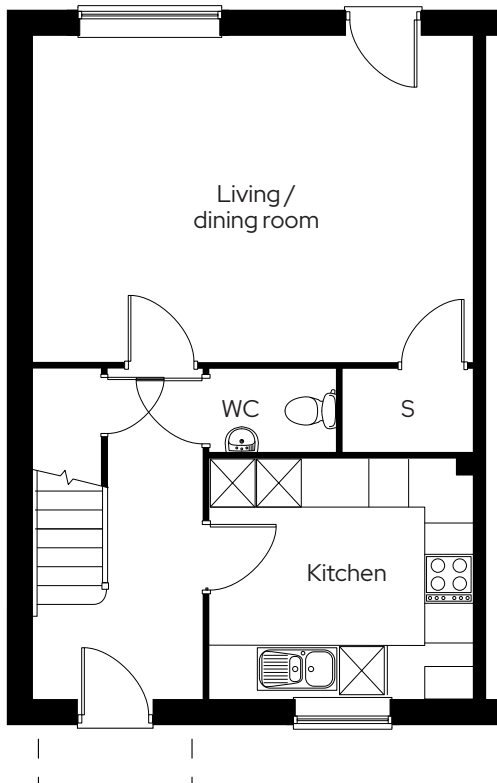
The Potters

3 Bedroom semi-detached
Plot 35, 36*

3  1  2 

Room

Living/dining room	5.5m x 4.1m
Kitchen	2.9m x 3.3m
Master bedroom	4.4m x 5.5m
Bedroom 2	3.1m x 3.3m
Bedroom 3	2.4m x 3.3m



* Mirrored plot S Storage

We operate a policy of continuous product development and individual features such as windows and elevational treatments may vary. Consequently, particulars contained within this document should be treated as general guidance only. They do not constitute a contract, part of a contract or a warranty. Computer generated images and photographs are for illustration purposes only and may not accurately depict individual plots. Dimensions provided are for general guidance and are not intended to be used for carpet sizes, appliances, spaces or items of furniture.

As one of the UK's leading shared ownership providers, Sovereign is passionate about giving everyone the opportunity to own their own home.

Our highly dedicated sales team has already helped thousands of people step onto the property ladder and our profit with a purpose principle means we can continue to help thousands more. Established, experienced, and affordable, we are proud to help more people live where they love.

Get in touch

0300 330 0718

To find out more about shared ownership and the homes we offer, get in touch today.

→ sovereignliving.org.uk

Head office

Sovereign House
Basing View
Basingstoke
RG21 4FA