



# Great Oldbury

A stylish collection of 2 & 3 bedroom homes

# Everything in easy reach

A small selection of 2 & 3 bedroom homes located in the popular development of Great Oldbury near Stonehouse, Gloucestershire. With excellent transport links to Bristol, Gloucester and beyond.

These stunning homes benefit from a modern fitted kitchen with a built-in oven, hob and extractor, open-plan living/dining room. Enjoy a stylish bathroom suite, downstairs cloakroom and private enclosed garden laid to lawn with two allocated parking spaces.

Upon completion, Great Oldbury will form part of a wider community benefiting from a local centre, primary school and sports pitches.



-  **The Ashmead**
-  **The Frome**

**Great Oldbury**  
Rowbotham Way,  
Great Oldbury,  
Stonehouse  
GL10 3GW

North





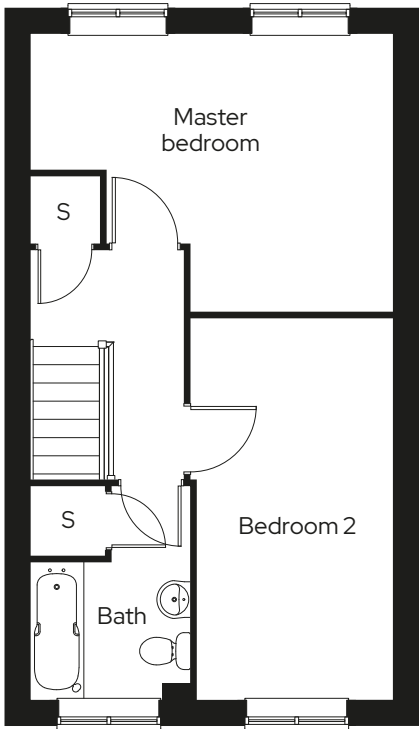
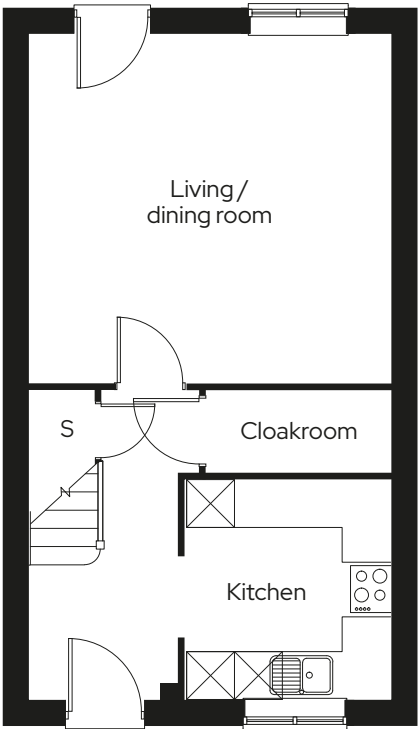


# The Ashmead

2 Bedroom end terraced  
Plot 97,\* 99

2 1 2

Room	
Kitchen	2.6m x 2.7m
Living/dining room	4.5m x 4.3m
Master bedroom	4.5m x 3.4m
Bedroom 2	2.4m x 4.7m



\* Mirrored plot   S Storage

We operate a policy of continuous product development and individual features such as windows and elevational treatments may vary. Consequently, particulars contained within this document should be treated as general guidance only. They do not constitute a contract, part of a contract or a warranty. Computer generated images and photographs are for illustration purposes only and may not accurately depict individual plots. Dimensions provided are for general guidance and are not intended to be used for carpet sizes, appliances, spaces or items of furniture.

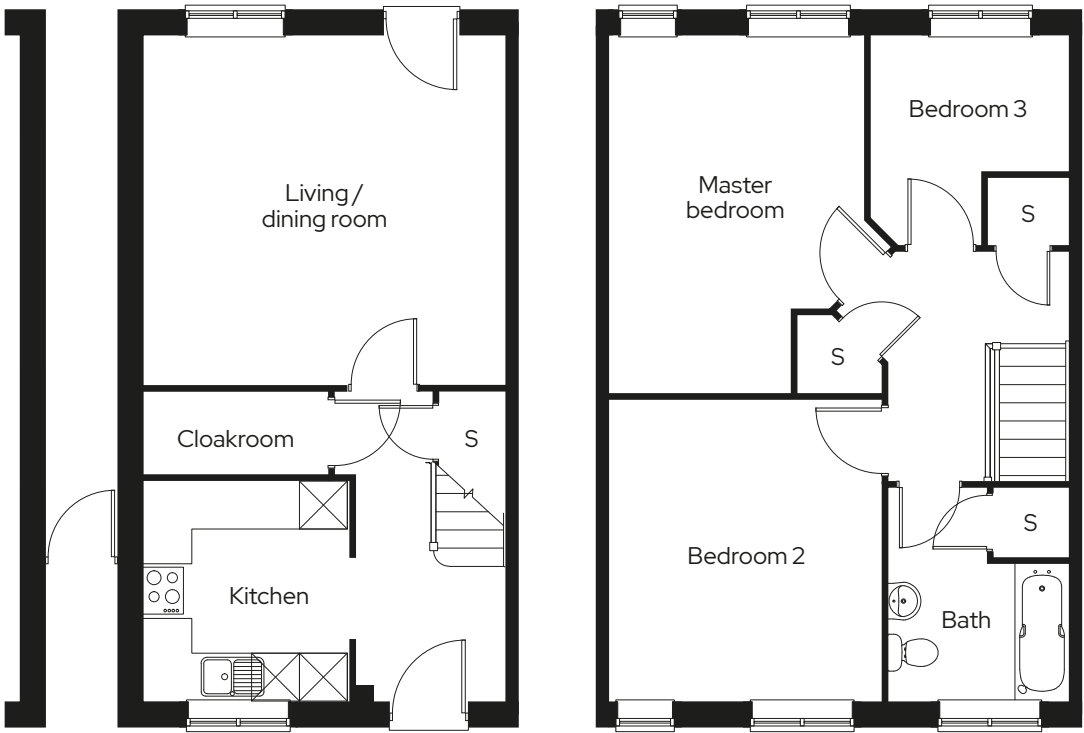


# The Frome

3 Bedroom terraced  
Plot 98

3 1 2

Room	
Kitchen	2.6m x 2.7m
Living/dining room	4.5m x 4.3m
Master bedroom	3.2m x 4.4m
Bedroom 2	3.4m x 3.7m
Bedroom 3	2.5m x 2.6m



\* Mirrored plot S Storage

We operate a policy of continuous product development and individual features such as windows and elevational treatments may vary. Consequently, particulars contained within this document should be treated as general guidance only. They do not constitute a contract, part of a contract or a warranty. Computer generated images and photographs are for illustration purposes only and may not accurately depict individual plots. Dimensions provided are for general guidance and are not intended to be used for carpet sizes, appliances, spaces or items of furniture.

# Sit back and relax

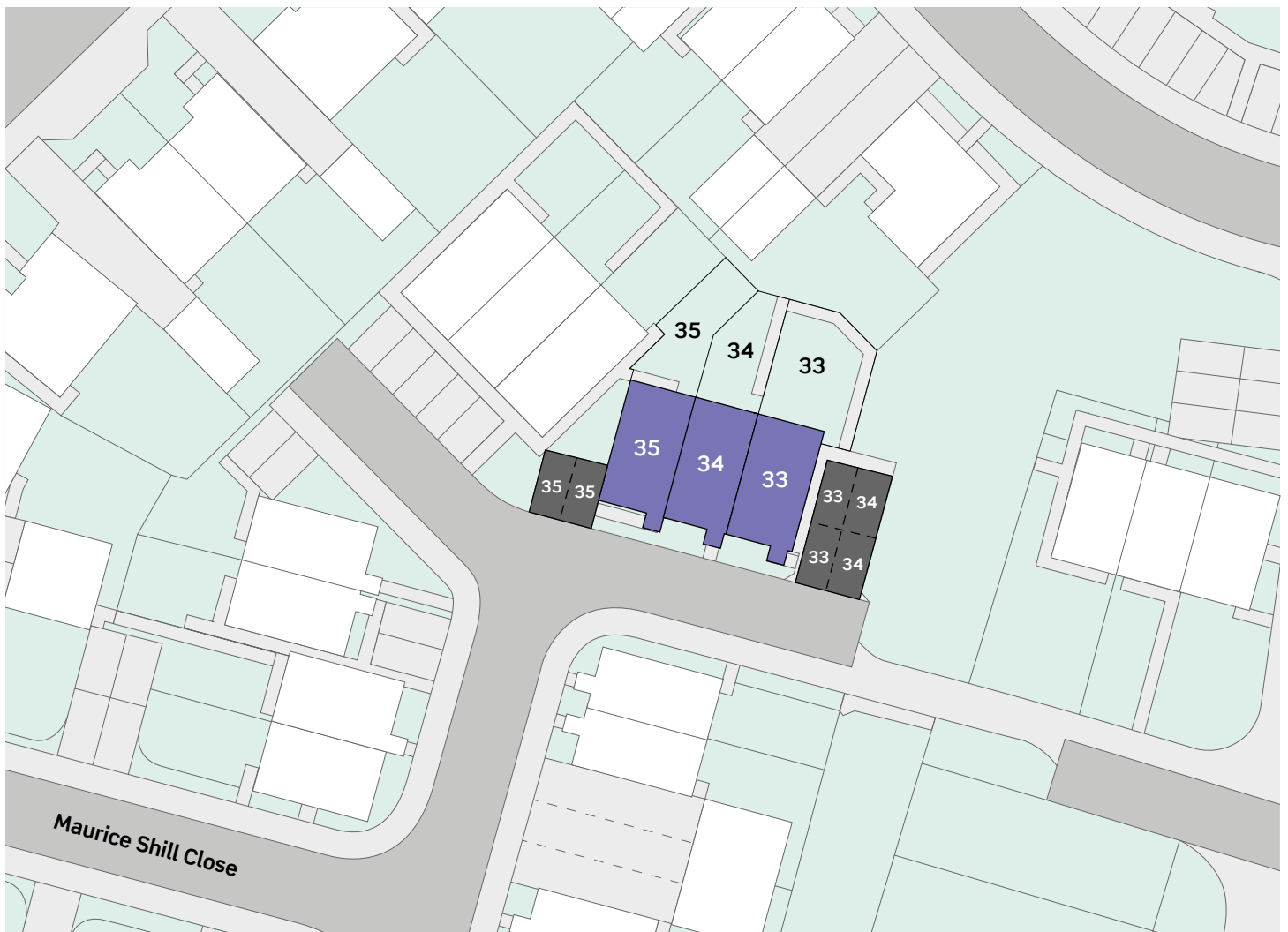
A small selection of contemporary 2 bedroom homes located in the popular development of Great Oldbury near Stonehouse, Gloucestershire.

These stunning new homes will benefit from a modern fitted kitchen with a built-in oven, hob and extractor and an open-plan kitchen/dining room. Enjoy a stylish bathroom suite, downstairs cloakroom and a rear enclosed garden with 2 allocated parking spaces.



**Great Oldbury**  
Maurice Shill Close,  
Stonehouse,  
Gloucestershire,  
GL10 3FR

North







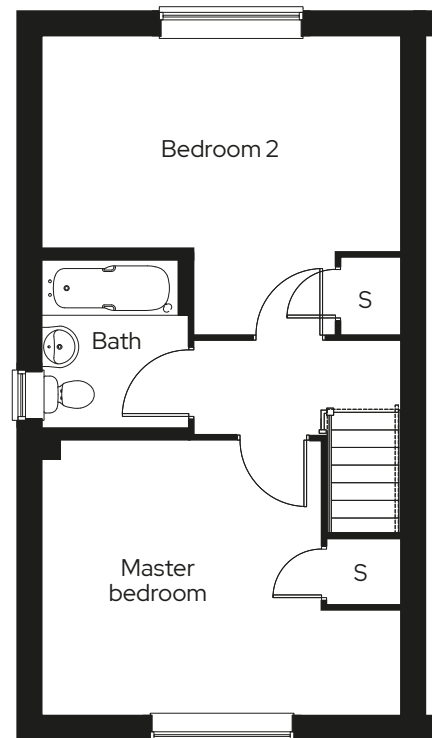
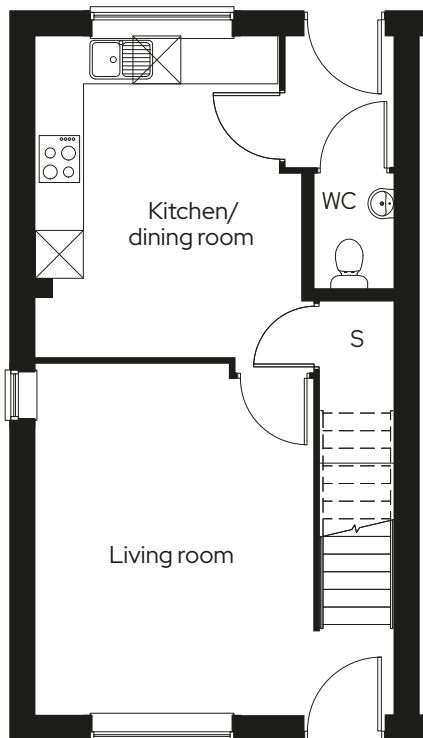
# The Stratford

2 Bedroom end terraced  
Plot 33\*, 35

2  1  2 

## Room

Kitchen/dining room	4.5m x 4.2m
Living	3.4m x 4.4m
Master bedroom	4.1m x 3.5m
Bedroom 2	4.1m x 2.7m





\* Mirrored plot S Storage

We operate a policy of continuous product development and individual features such as windows and elevational treatments may vary. Consequently, particulars contained within this document should be treated as general guidance only. They do not constitute a contract, part of a contract or a warranty. Computer generated images and photographs are for illustration purposes only and may not accurately depict individual plots. Dimensions provided are for general guidance and are not intended to be used for carpet sizes, appliances, spaces or items of furniture.



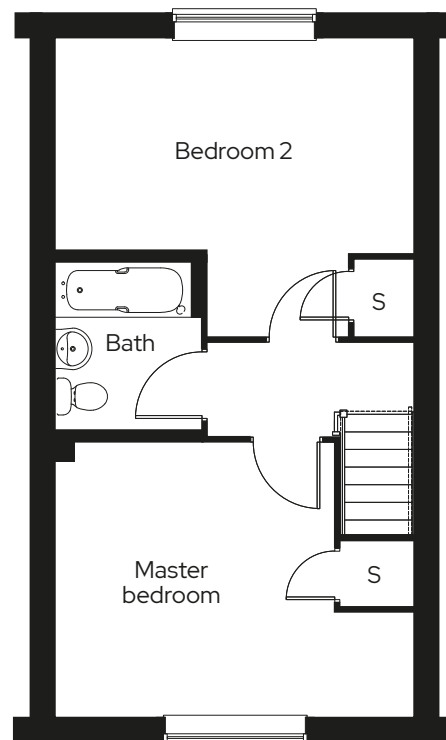
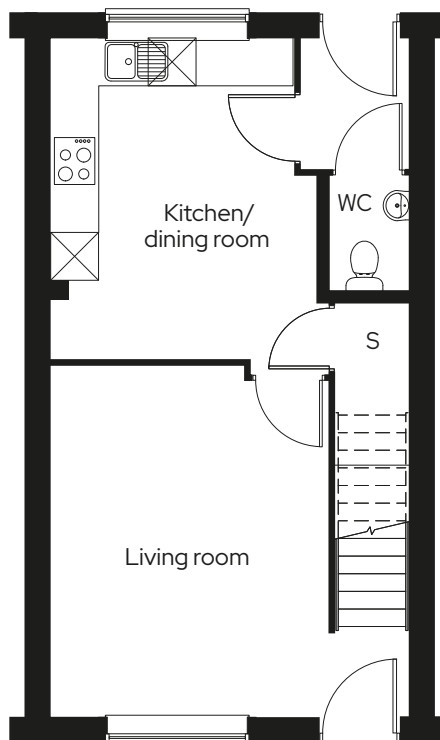
# The Stratford

2 Bedroom mid terraced  
Plot 34

2  1  2 

## Room

Kitchen/dining room	4.5m x 4.2m
Living	3.4m x 4.4m
Master bedroom	4.1m x 3.5m
Bedroom 2	4.1m x 2.7m



S Storage

We operate a policy of continuous product development and individual features such as windows and elevational treatments may vary. Consequently, particulars contained within this document should be treated as general guidance only. They do not constitute a contract, part of a contract or a warranty. Computer generated images and photographs are for illustration purposes only and may not accurately depict individual plots. Dimensions provided are for general guidance and are not intended to be used for carpet sizes, appliances, spaces or items of furniture.

As one of the UK's leading shared ownership providers, Sovereign is passionate about giving everyone the opportunity to own their own home.

Our highly dedicated sales team has already helped thousands of people step onto the property ladder and our profit with a purpose principle means we can continue to help thousands more. Established, experienced, and affordable, we are proud to help more people live where they love.

## Get in touch

### 0300 330 0718

To find out more about shared ownership and the homes we offer, get in touch today.

→ [sovereignliving.org.uk](https://sovereignliving.org.uk)

### Head office

Sovereign House  
Basing View  
Basingstoke  
RG21 4FA