

Stylish two bedroom homes located at the newly built development of Great Oldbury near the town of Stonehouse, Gloucestershire.



Great Oldbury

The Alkerton

Thomas Tudor Way,
Great Oldbury, Stonehouse,
Gloucestershire GL10 3FS



Image shows from right to left
Plots 186-189, other Plots may vary.

Call **0300 330 0718**
Visit **[sovereignliving.org.uk](https://www.sovereignliving.org.uk)**

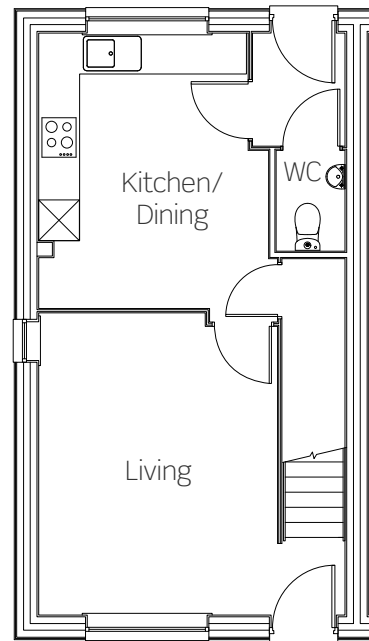
Great Oldbury The Alkerton

Great Oldbury is a beautiful development ideally situated close to a range of local amenities and for transport links to Bristol and Gloucester, making it the ideal location for families and commuters.

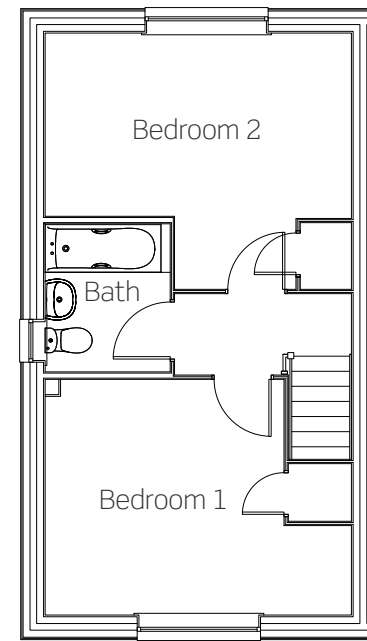
Plots 186-193

These new homes benefit from:

- Modern fitted kitchen with a built-in oven, hob and extractor
- Downstairs cloakroom
- Stylish bathroom suite with bath
- Private enclosed garden laid to lawn
- Allocated parking space



Ground floor



First floor

Plots 186, 188, 190 & 192
have a mirrored layout.

Stylish three bedroom homes located at the newly built development of Great Oldbury near the town of Stonehouse, Gloucestershire.



Great Oldbury

The Doverow

Charles Almond Close,
Great Oldbury, Stonehouse,
Gloucestershire GL10 3FH



Image shows previous phase at Great Oldbury,
other Plots and external finishes may vary.

Call **0300 330 0718**
Visit **sovereignliving.org.uk**

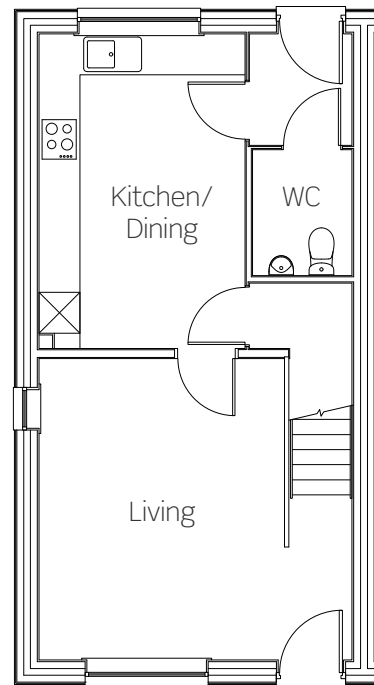
Great Oldbury The Doverow

Great Oldbury is a beautiful development ideally situated close to a range of local amenities and for transport links to Bristol and Gloucester, making it the ideal location for families and commuters.

Plots 287-289

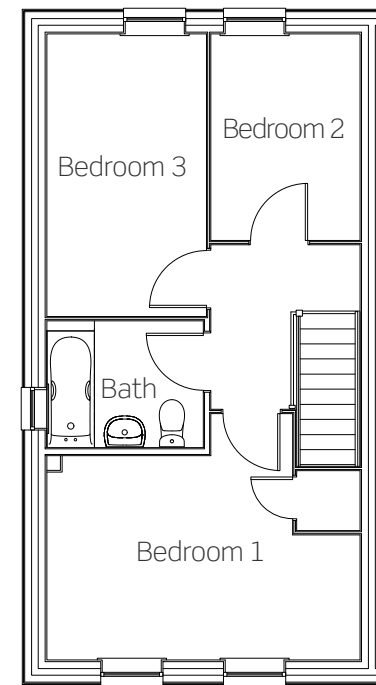
These new homes benefit from:

- Modern fitted kitchen with a built-in oven, hob and extractor
- Open-plan kitchen/dining
- Spacious living room
- Stylish bathroom suite with bath
- Two spacious double bedrooms
- Private enclosed garden laid to lawn
- Allocated parking space



Ground floor

Kitchen/Dining 2753mm x 4372mm
Living 4305mm x 4178mm



First floor

Bedroom one 4350mm x 2727mm
Bedroom two 2215mm x 3060mm
Bedroom three 2072mm x 5218mm

All dimensions are maximum.

Stylish two bedroom homes located at the newly built development of Great Oldbury near the town of Stonehouse, Gloucestershire.



Great Oldbury

The Eastington

Charles Almond Close,
Great Oldbury, Stonehouse,
Gloucestershire GL10 3FH



Image shows previous phase at Great Oldbury,
other Plots and external finishes may vary.

Call **0300 330 0718**
Visit **[sovereignliving.org.uk](https://www.sovereignliving.org.uk)**

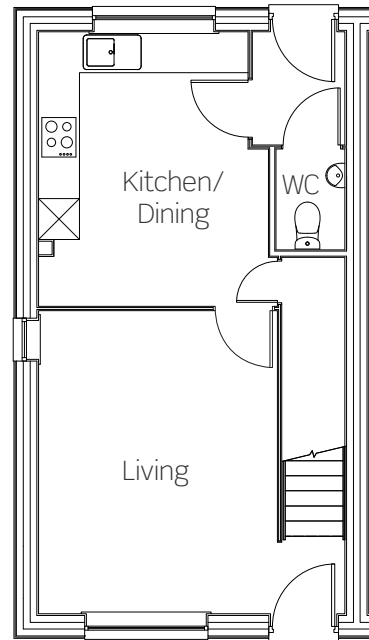
Great Oldbury The Eastington

Great Oldbury is a beautiful development ideally situated close to a range of local amenities and for transport links to Bristol and Gloucester, making it the ideal location for families and commuters.

Plots 293 & 294

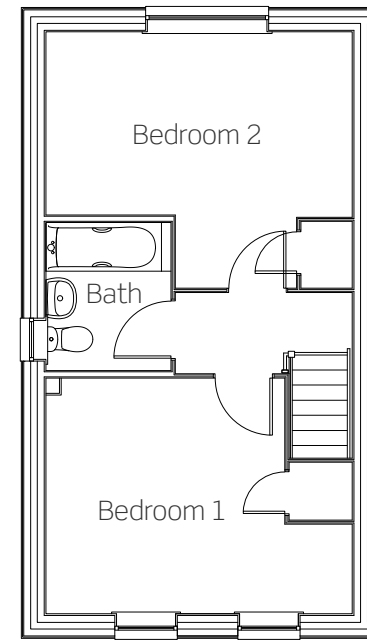
These new homes benefit from:

- Modern fitted kitchen with a built-in oven, hob and extractor
- Stylish bathroom suite with bath
- Two spacious double bedrooms
- Private enclosed garden laid to lawn
- Two allocated parking spaces



Ground floor

Kitchen/Dining	3408mm x 4230mm
Living	3408mm x 4370mm



First floor

Bedroom one	4250mm x 3740mm
Bedroom two	4250mm x 2417mm

Plot 294 has a mirrored layout.
All dimensions are maximum.

Great Oldbury
Thomas Tudor Way,
Great Oldbury,
Stonehouse,
Gloucester GL10 3FS

Call **0300 330 0718**
Visit sovereignliving.org.uk

 Plots 186-193
The Alkerton
2 bedroom house



Great Oldbury
 Charles Almond Close,
 Great Oldbury,
 Stonehouse,
 Gloucester GL10 3FH

Call **0300 330 0718**
 Visit **sovereignliving.org.uk**

 Plots 287-289
 The Doverow
 3 bedroom house

 Plots 293 & 294
 The Eastington
 2 bedroom house



We operate a policy of continuous product development and individual features such as windows and elevational treatments may vary. Consequently, particulars contained within this document should be treated as general guidance only. They do not constitute a contract, part of a contract or a warranty. Computer generated images and photographs are for illustration purposes only and may not accurately depict individual plots. Dimensions provided are for general guidance and are not intended to be used for carpet sizes, appliances, spaces or items of furniture. Sovereign Living is a non-charitable subsidiary of Sovereign Housing Association Limited, a charitable association.

Price list & availability

Plot	Property details	Price	40% share	Monthly rent	Estimated monthly service charge	Availability
186	2 bedroom end of terraced house with 1 parking space	£225,000	£90,000	£309.37	£31.33	Early Summer 2020
187	2 bedroom terraced house with 1 parking space	£220,000	£88,000	£302.50	£31.33	Early Summer 2020
188	2 bedroom terraced house with 1 parking space	£220,000	£88,000	£302.50	£31.33	Early Summer 2020
189	2 bedroom end of terraced house with 1 parking space	£225,000	£90,000	£309.37	£31.33	Early Summer 2020
190	2 bedroom end of terraced house with 1 parking space	£225,000	£90,000	£309.37	£31.33	Early Summer 2020

Great Oldbury
Stonehouse

0300 330 0718
NewBuildSO@sovereign.org.uk

Price list & availability

Plot	Property details	Price	40% share	Monthly rent	Estimated monthly service charge	Availability
191	2 bedroom terraced house with 1 parking space	£220,000	£88,000	£302.50	£31.33	Early Summer 2020
192	2 bedroom terraced house with 1 parking space	£220,000	£88,000	£302.50	£31.33	Early Summer 2020
193	2 bedroom end of terraced house with 1 parking space	£225,000	£90,000	£309.37	£31.33	Early Summer 2020
287	3 bedroom end of terraced house with 1 parking space	£287,000	£114,800	£394.62	£31.33	Early Summer 2020
288	3 bedroom mid terraced house with 1 parking space	£280,000	£112,000	£385.00	£31.33	Early Summer 2020

Great Oldbury
Stonehouse

0300 330 0718
NewBuildSO@sovereign.org.uk

Price list & availability

Plot	Property details	Price	40% share	Monthly rent	Estimated monthly service charge	Availability
289	3 bedroom end of terraced house with 1 parking space	£285,000	£114,000	£391.87	£31.33	Early Summer 2020
293	2 bedroom semi-detached house with 2 parking spaces	£227,000	£90,800	£312.12	£31.33	Early Summer 2020
294	2 bedroom semi-detached house with 2 parking spaces	£227,000	£90,800	£312.12	£31.33	Early Summer 2020

Great Oldbury
Stonehouse

0300 330 0718
NewBuildSO@sovereign.org.uk