



A collection of contemporary two bedroom homes on the edge of peaceful woodland - available with shared ownership



Victory Oak

The Matcham

Utah Road, St Leonards,
Ringwood BH24 2FP



Call **0300 330 0718**
Visit **[sovereignliving.org.uk](https://www.sovereignliving.org.uk)**

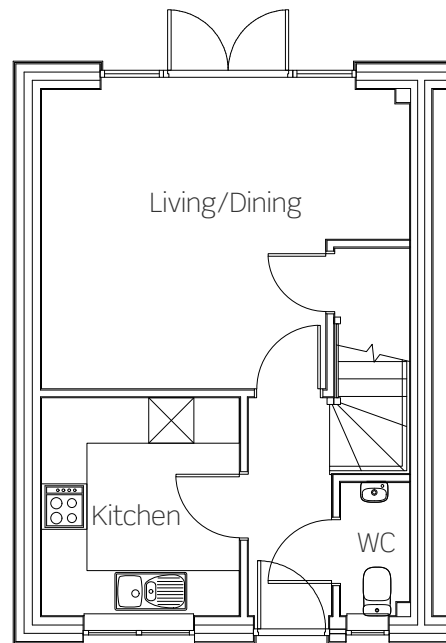
Victory Oak The Matcham

Ideally situated on the fringe of the New Forest and just off the A31 between Ferndown and Ringwood. With just a five minute drive from shops, schools, restaurants and leisure facilities, this truly is a fantastic place to call home.

Plots 113-116

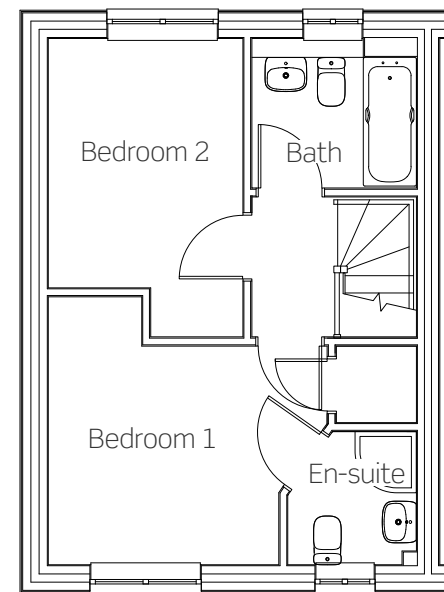
These new homes benefit from:

- Modern fitted kitchen with built-in oven, hob & extractor
- Spacious living/dining space with French doors leading out to garden
- En-suite to Master bedroom
- Flooring provided throughout
- One allocated parking space (Plots 113 & 114)
- Two allocated parking spaces (Plots 115 & 116)



Ground floor

Kitchen	2669mm x 2937mm
Living/Dining	4934mm x 4012mm



First floor

Bedroom one	3100mm x 3597mm
Bedroom two	2625mm x 3351mm

Typical floor plan.
All dimensions are maximum.



A collection of contemporary three bedroom homes on the edge of peaceful woodland - available with shared ownership



Victory Oak The Ashley

Utah Road, St Leonards,
Ringwood BH24 2FP



Call **0300 330 0718**
Visit **[sovereignliving.org.uk](https://www.sovereignliving.org.uk)**

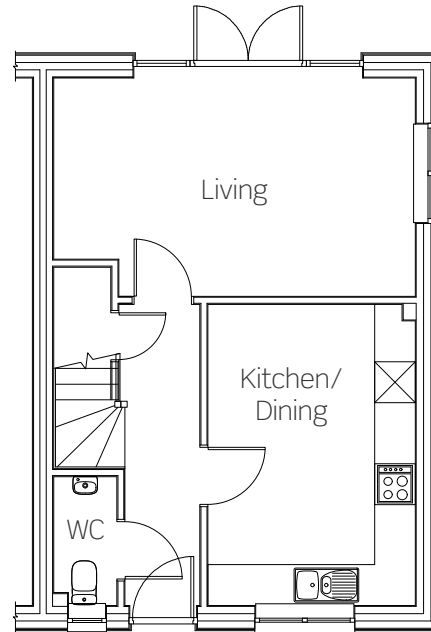
Victory Oak The Ashley

Ideally situated on the fringe of the New Forest and just off the A31 between Ferndown and Ringwood. With just a five minute drive from shops, schools, restaurants and leisure facilities, this truly is a fantastic place to call home.

Plots 117-119

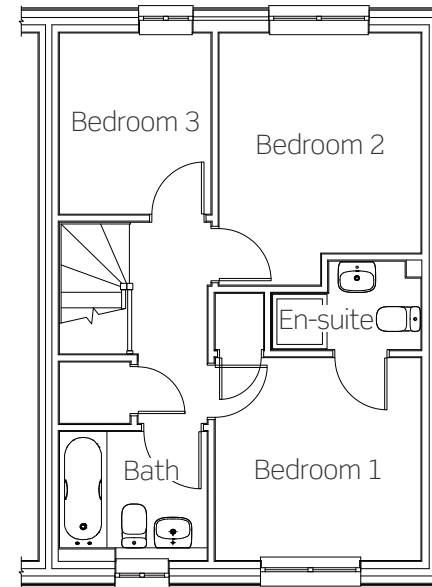
These new homes benefit from:

- Modern kitchen/diner layout
- Spacious living area with French doors leading out onto private enclosed garden
- Ground floor cloakroom
- Stylish bathroom suite
- Flooring provided throughout
- Two allocated parking spaces & a single garage



Ground floor

Kitchen/Dining	3118mm x 4476mm
Living	5384mm x 3259mm



First floor

Bedroom one	3078mm x 3031mm
Bedroom two	3021mm x 3284mm
Bedroom three	2274mm x 2713mm

Typical floor plan.
All dimensions are maximum.



A collection of contemporary three bedroom homes on the edge of peaceful woodland - available with shared ownership



Image shows typical Plots at Victory Oak, other Plots and external finishes may vary.

Victory Oak

The Avon

Utah Road, St Leonards,
Ringwood BH24 2FP



Call **0300 330 0718**
Visit **[sovereignliving.org.uk](https://www.sovereignliving.org.uk)**

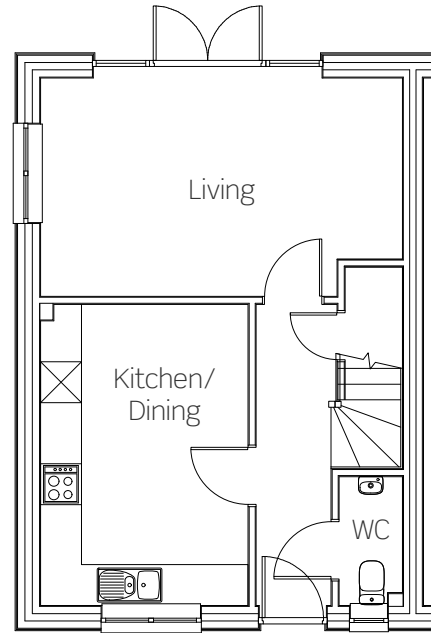
Victory Oak The Avon

Ideally situated on the fringe of the New Forest and just off the A31 between Ferndown and Ringwood. With just a five minute drive from shops, schools, restaurants and leisure facilities, this truly is a fantastic place to call home.

Plots 120-122

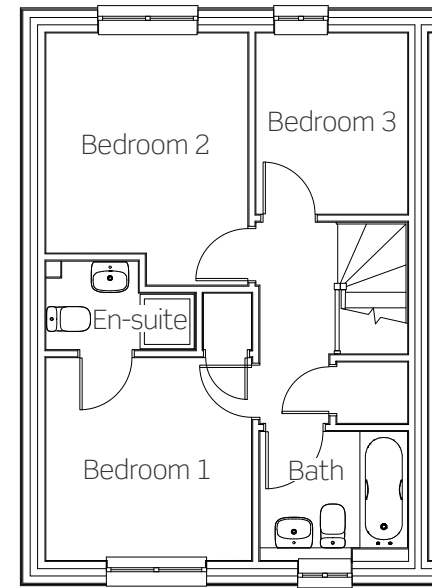
These new homes benefit from:

- Modern fitted kitchen with built-in oven, hob & extractor
- Spacious living space with French doors out to garden
- Stylish bathroom suite
- Flooring provided throughout
- One allocated parking space (Plots 120 & 121)
- Two allocated parking spaces & a single garage (Plot 122)



Ground floor

Kitchen/Dining	3101mm x 4476mm
Living	5384mm x 3259mm



First floor

Bedroom one	3078mm x 3031mm
Bedroom two	3021mm x 3284mm
Bedroom three	2274mm x 2713mm

Typical floor plan.
All dimensions are maximum.

Victory Oak

Utah Road,
St Leonards,
Ringwood BH24 2FP

Call **0300 330 0718**
Visit **sovereignliving.org.uk**

- Plots 113-116
The Matcham
2 bedroom house
- Plots 117-119
The Ashley
3 bedroom house
- Plots 120-122
The Avon
3 bedroom house



Price list & availability

Plot	Property details	Parking	Price	40% share	Monthly rent	Estimated monthly service charge	Availability
113	2 Bed End Terrace House	1 parking space	£290,000	£116,000	£398.75	£8.02	Summer 2020
114	2 Bed Mid Terrace House	1 parking space	£285,000	£114,000	£391.88	£8.02	Summer 2020
115	2 Bed Mid Terrace House	2 parking spaces	£285,000	£114,000	£391.88	£8.02	Summer 2020
116	2 Bed End Terrace House	2 parking spaces	£292,500	£117,000	£402.19	£8.02	Summer 2020
117	3 Bed end of Terrace	Garage & Driveway	£347,500	£139,000	£477.81	£8.02	Summer 2020

**Victory Oak
St Leonards**

**0300 330 0718
living@sovereign.org.uk**

Price list & availability

Plot	Property details	Parking	Price	40% share	Monthly rent	Estimated monthly service charge	Availability
118	3 Bed Mid Terrace House	Garage & Driveway	£340,000	£136,000	£467.50	£8.02	Summer 2020
119	3 Bed End Terrace House	Garage & Driveway	£345,000	£138,000	£474.38	£8.02	Summer 2020
120	3 Bed End Terrace House	Parking space	£320,000	£128,000	£440.00	£8.02	Summer 2020
121	3 Bed Mid Terrace House	Parking space	£315,000	£126,000	£433.13	£8.02	Summer 2020

**Victory Oak
St Leonards**

**0300 330 0718
living@sovereign.org.uk**

Price list & availability

Plot	Property details	Parking	Price	40% share	Monthly rent	Estimated monthly service charge	Availability
122	3 Bed End Terrace House	Garage & Driveway	£345,000	£138,000	£474.38	£8.02	Summer 2020

**Victory Oak
St Leonards**

0300 330 0718
living@sovereign.org.uk