



Stylish three bedroom homes set within the village of Hardwicke - available to buy with shared ownership



Oaklands at Hunts Grove The Elmore

Crains Bill Mead, Hardwicke,
Gloucester GL2 4EA



Call **0300 330 0718**
Visit **sovereignliving.org.uk**

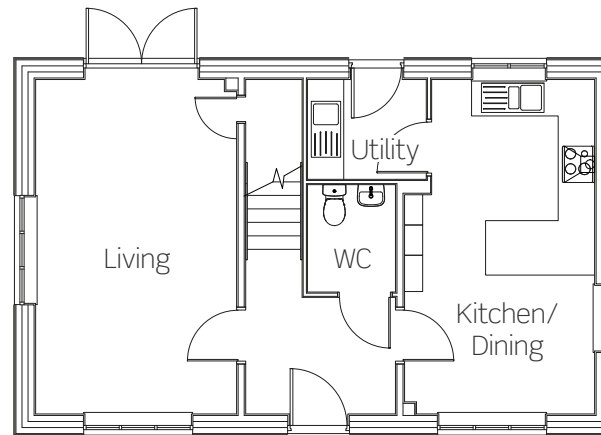
Oaklands at Hunts Grove The Elmore

Your new home at Oaklands has everything to offer for modern day living and with the added convenience of being just 4 miles from Gloucester City Centre.

Plots 341-343

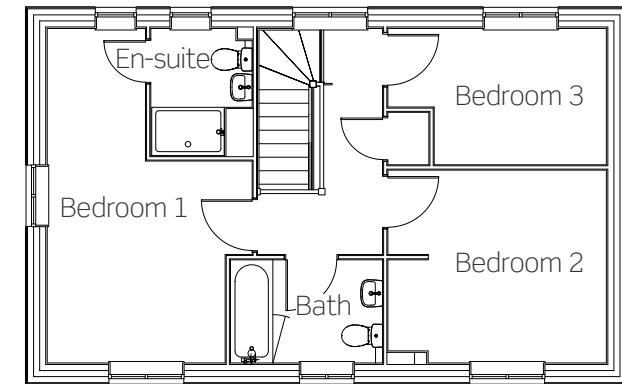
These new homes benefit from:

- Modern open-plan kitchen/diner
- Separate utility room leading through from kitchen
- Spacious living room with French doors leading out onto private enclosed garden
- Stylish family bathroom suite
- En-suite to master bedroom
- Three allocated parking spaces



Ground floor

Kitchen/Dining 3192mm x 5578mm
Living 3373mm x 5578mm



First floor

Bedroom one 3425mm x 5578mm
Bedroom two 3648mm x 3225mm
Bedroom three 3648mm x 2290mm

Plot 343 has a mirrored layout.
All dimensions are maximum.



Stylish three bedroom home set within the village of Hardwicke - available to buy with shared ownership



Oaklands at Hunts Grove The Quedgeley

Crains Bill Mead, Hardwicke,
Gloucester GL2 4EA



Call **0300 330 0718**
Visit **sovereignliving.org.uk**

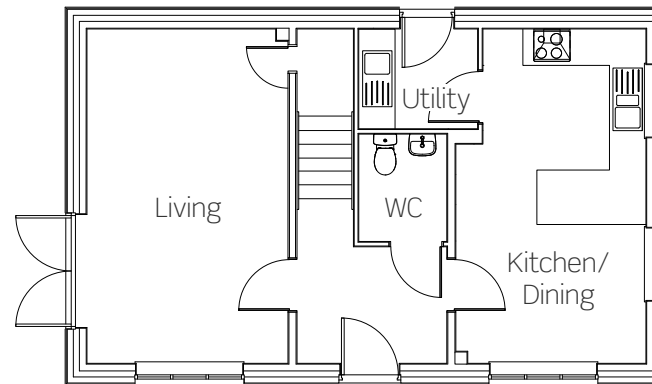
Oaklands at Hunts Grove The Quedgeley

Your new home at Oaklands has everything to offer for modern day living and with the added convenience of being just 4 miles from Gloucester City Centre.

Plot 344

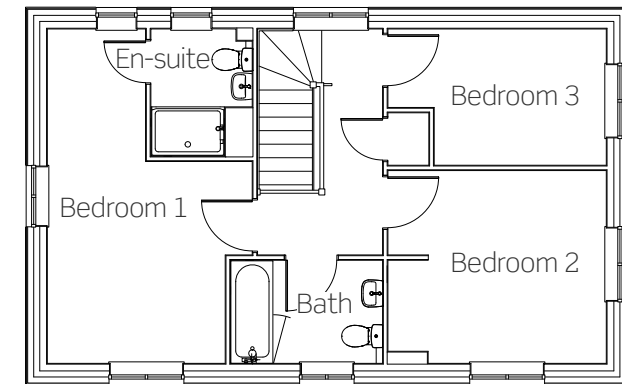
This new home benefits from:

- Modern open-plan kitchen/diner
- Separate utility room leading through from kitchen
- Spacious living room with French doors leading out onto private enclosed garden
- Stylish family bathroom suite
- En-suite to master bedroom
- Three allocated parking spaces



Ground floor

Kitchen/Dining 3192mm x 5578mm
Living 3373mm x 5578mm



First floor



Bedroom one 3425mm x 5578mm
Bedroom two 3648mm x 3139mm
Bedroom three 3648mm x 2291mm

All dimensions are maximum.

Oaklands at Hunts Grove

Crains Bill Mead,
Hardwicke,
Gloucester GL2 4EA

Call **0300 330 0718**
Visit **sovereignliving.org.uk**

-  Plots 341-343
The Elmore
3 bedroom house
-  Plot 344
The Quedgeley
3 bedroom house



Price list & availability

Plot	Property details	Price	40% share	Monthly rent	Estimated monthly service charge	Availability
341	3 bedroom detached house with 3 allocated parking spaces	£310,000.00	£124,000.00	£426.25	£27.86	Autumn 2020
342	3 bedroom detached house with 3 allocated parking spaces	£310,000.00	£124,000.00	£426.25	£27.86	Autumn 2020
343	3 bedroom detached house with 3 allocated parking spaces	£310,000.00	£124,000.00	£426.25	£27.86	Autumn 2020
344	3 bedroom detached house with 3 allocated parking spaces	£310,000.00	£124,000.00	£426.25	£37.94	Autumn 2020

**Oaklands at Hunts
Grove, Hardwicke**

**0300 330 0718
newbuildso@sovereign.org.uk.**