



# Great Oldbury

Beautifully designed 2 & 3 bedroom homes




# A location spoilt for choice


A charming collection of 2 & 3 bedroom homes available with shared ownership in the popular location of Stonehouse, Gloucestershire.

These homes each come complete with a modern fitted kitchen with a built-in oven, hob and extractor and spacious open plan living/dining. Also benefitting from good-sized bedrooms, stylish bathroom suite with bath, private garden laid to lawn and two allocated parking spaces.

Situated in a beautiful countryside setting, Great Oldbury offers plenty of picturesque views as well as a range of local amenities, traditional inns, and restaurants.



-  **The Stratford**
-  **The Winston**
-  **Parking spaces**

 **Great Oldbury**  
Rowbotham Way,  
Stonehouse,  
Gloucestershire  
GL10 3GW

North





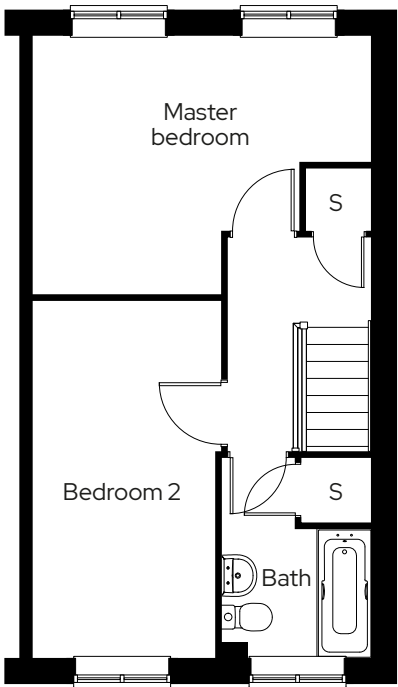
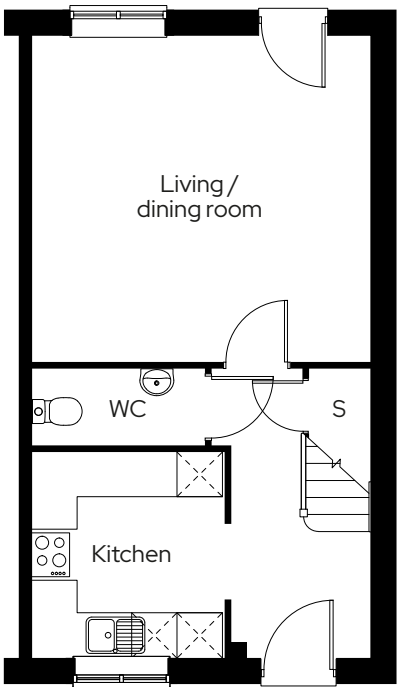


# The Stratford

2 bedroom end & mid terraced  
Plot 112,\* 114†

2 1 2

Room	
Living/dining room	4.5m x 4.3m
Kitchen	3.0m x 2.6m
Master bedroom	4.5m x 3.4m
Bedroom 2	4.7m x 2.4m



\* End terrace † Mirrored S Storage

We operate a policy of continuous product development and individual features such as windows and elevational treatments may vary. Consequently, particulars contained within this document should be treated as general guidance only. They do not constitute a contract, part of a contract or a warranty. Computer generated images and photographs are for illustration purposes only and may not accurately depict individual plots. Dimensions provided are for general guidance and are not intended to be used for carpet sizes, appliances, spaces or items of furniture.



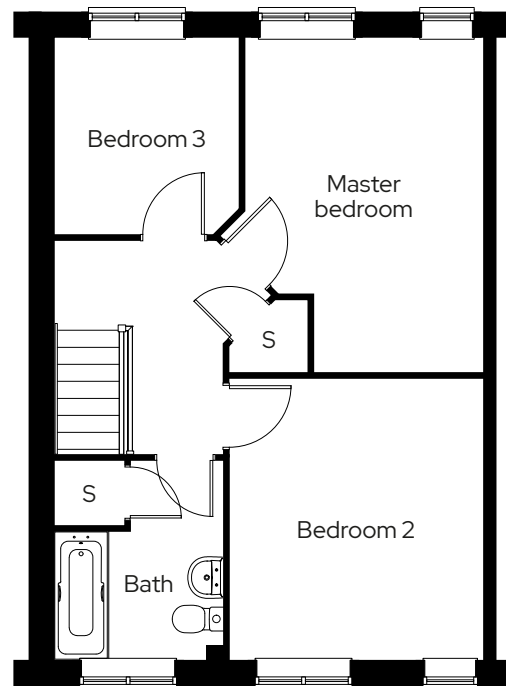
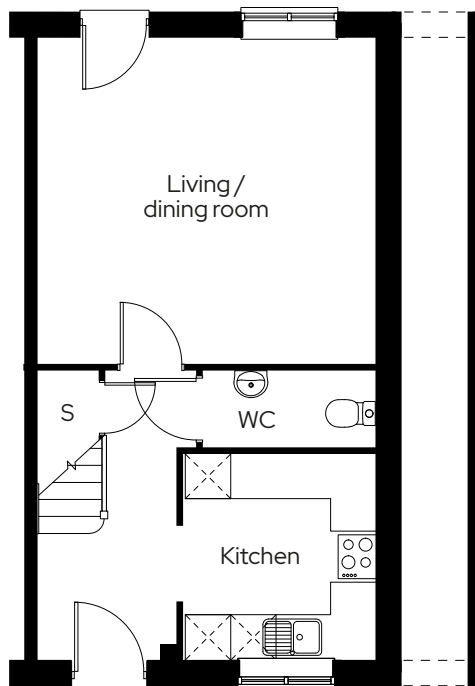
# The Winston

3 bedroom mid terraced  
Plot 113

3  1  2 

## Room

Living/dining room	4.5m x 4.3m
Kitchen	2.7m x 2.6m
Master bedroom	4.4m x 3.2m
Bedroom 2	3.7m x 3.4m
Bedroom 3	2.6m x 2.5m



S Storage

We operate a policy of continuous product development and individual features such as windows and elevational treatments may vary. Consequently, particulars contained within this document should be treated as general guidance only. They do not constitute a contract, part of a contract or a warranty. Computer generated images and photographs are for illustration purposes only and may not accurately depict individual plots. Dimensions provided are for general guidance and are not intended to be used for carpet sizes, appliances, spaces or items of furniture.

As one of the UK's leading shared ownership providers, Sovereign is passionate about giving everyone the opportunity to own their own home.

Our highly dedicated sales team has already helped thousands of people step onto the property ladder and our profit with a purpose principle means we can continue to help thousands more. Established, experienced, and affordable, we are proud to help more people live where they love.

## Get in touch

### 0300 330 0718

To find out more about shared ownership and the homes we offer, get in touch today.

→ [sovereignliving.org.uk](https://sovereignliving.org.uk)

### Head office

Sovereign House  
Basing View  
Basingstoke  
RG21 4FA