



Fullers Grove

A stylish collection of 2 & 3 bedroom homes




Homes in the Oxfordshire countryside


East Challow is an attractive village situated just over a mile from the historic market town of Wantage.

The characterful market town combines convenience with charm and a strong sense of community. With easy access to London from Didcot Parkway and the M4 & A34 close by it's perfect for families and working professionals.

These homes will benefit from a modern fitted kitchen, stylish bathroom suite and allocated parking and all will sit beautifully within the Oxfordshire countryside with plenty of untouched countryside at your fingertips.



-  **The Wayland**
-  **The Ridgeway**
-  **Parking spaces**


 **Fullers Grove,**
East Challow,
Wantage,
Oxfordshire,
OX12 9FT





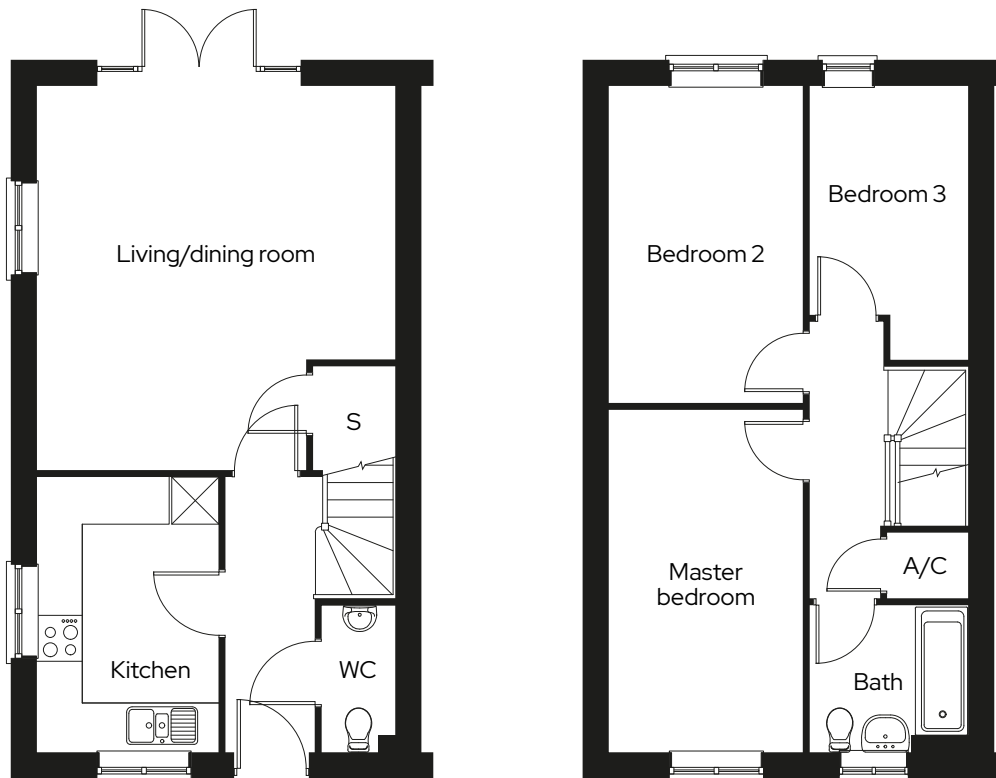
The Wayland

3 bedroom end terraced
Plot 42

3  1  2 

Room



Kitchen	2.4m x 3.7m
Living/dining room	4.8m x 5.1m
Master bedroom	2.6m x 4.5m
Bedroom 2	2.6m x 4.2m
Bedroom 3	2.1m x 3.6m



A/C Airing cupboard S Storage

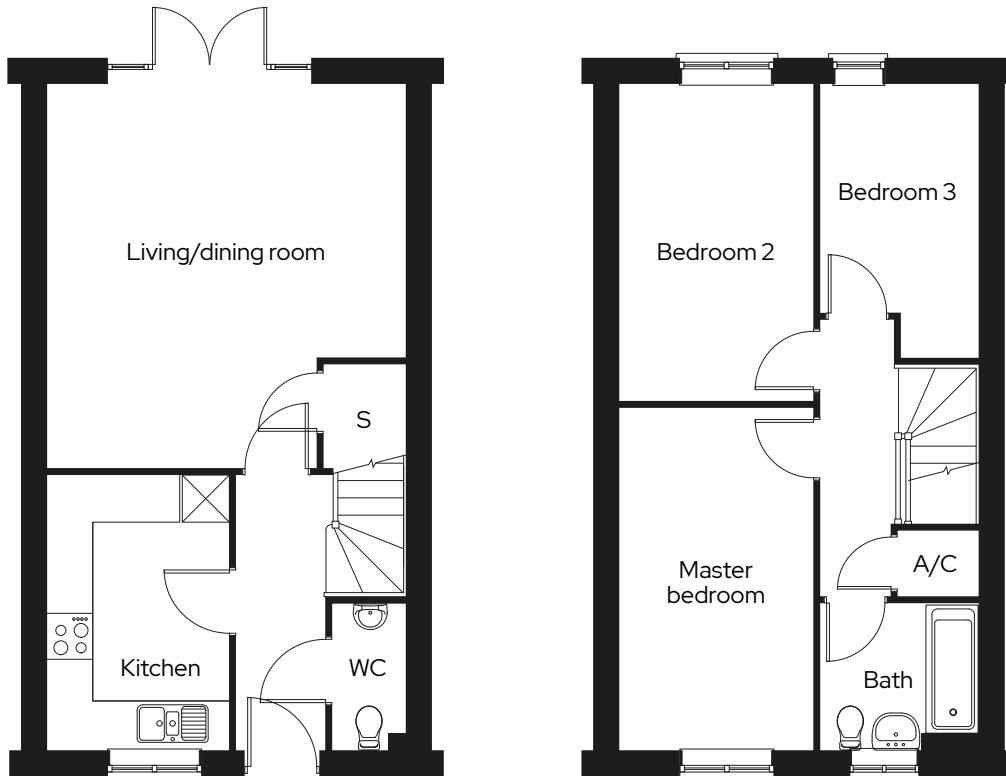
The Wayland

3 bedroom mid terraced
Plot 43

3  1  2 

Room

Kitchen	2.4m x 3.7m
Living/dining room	4.8m x 5.1m
Master bedroom	2.6m x 4.5m
Bedroom 2	2.6m x 4.2m
Bedroom 3	2.1m x 3.6m



A/C Airing cupboard S Storage

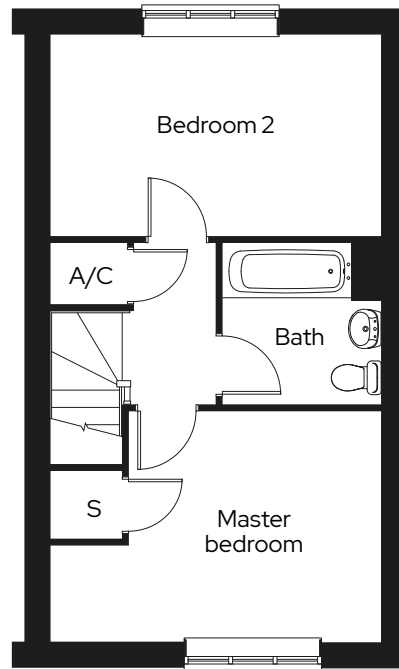
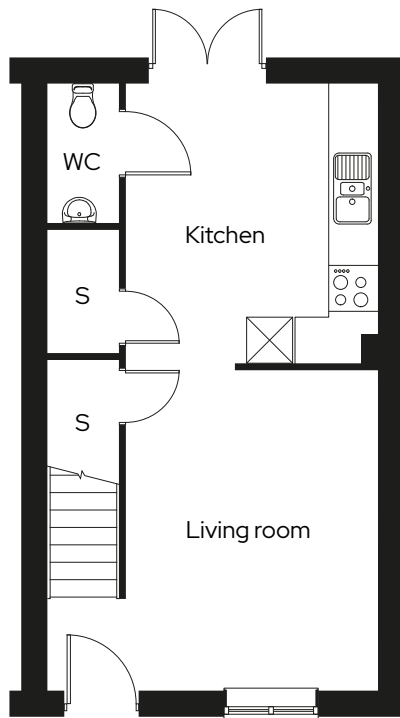
The Ridgeway

2 bedroom end terraced
Plot 44

2  1  2 

Room

Kitchen	3.4m x 3.7m
Living room	4.4m x 4.3m
Master bedroom	4.4m x 3.1m
Bedroom 2	4.4m x 2.7m



A/C Airing cupboard S Storage

We operate a policy of continuous product development and individual features such as windows and elevational treatments may vary. Consequently, particulars contained within this document should be treated as general guidance only. They do not constitute a contract, part of a contract or a warranty. Computer generated images and photographs are for illustration purposes only and may not accurately depict individual plots. Dimensions provided are for general guidance and are not intended to be used for carpet sizes, appliances, spaces or items of furniture. All dimensions are maximum.

Get in touch

0300 330 0718

To find out more about shared ownership and the homes we offer, get in touch today.

→ sovereignliving.org.uk

Head office

Sovereign House
Basing View
Basingstoke
RG21 4FA

As one of the UK's leading shared ownership providers, Sovereign is passionate about giving everyone the opportunity to own their own home.

Our highly dedicated sales team has already helped thousands of people step onto the property ladder and our profit with a purpose principle means we can continue to help thousands more. Established, experienced, and affordable, we are proud to help more people live where they love.