

A selection of utterly stunning apartments in Cholsey, Oxford. Available with shared ownership.



## Fair Mile at Cholsey Meadows

Hermitage Court, Cholsey,  
Wallingford, Oxford OX10 9GE



Call **0300 330 0718**  
Visit **[sovereignliving.org.uk](http://sovereignliving.org.uk)**

## Fair Mile The Thames

Redeveloped in a Grade II listed building and set on over 100 acres of protected land on the banks of the River Thames, Fair Mile at Cholsey Meadows is a truly unique place to call home.

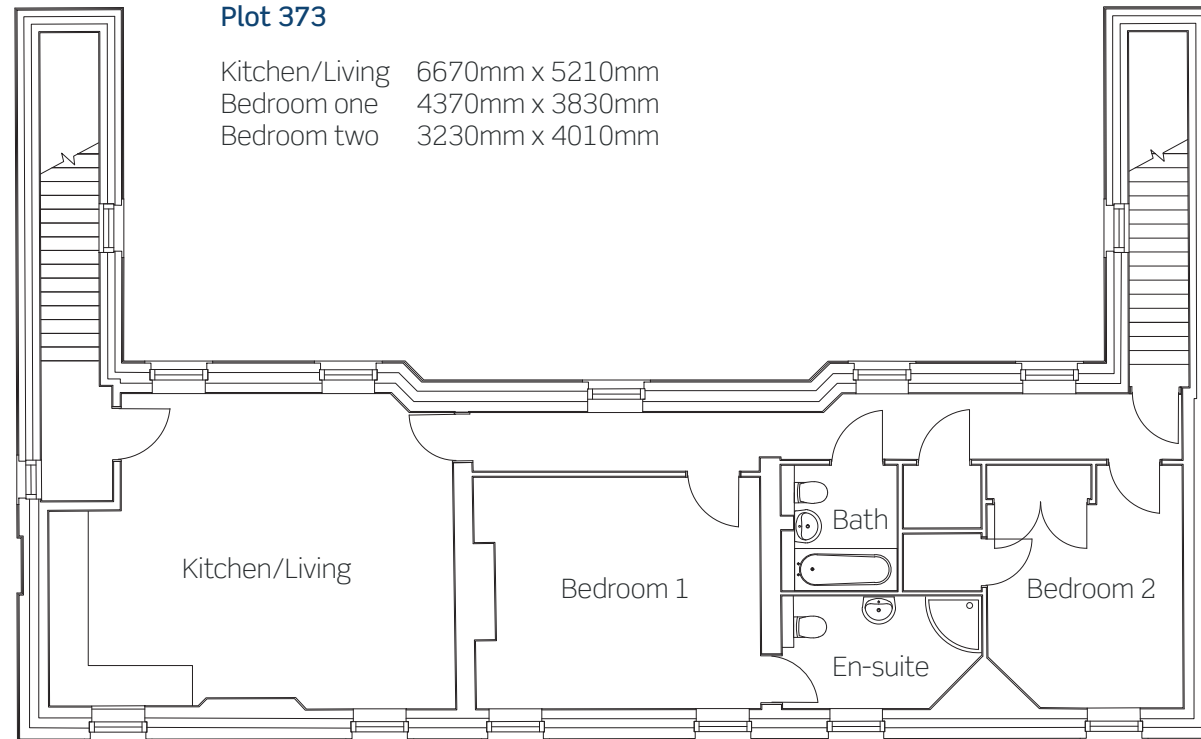
### Plot 373

This new home benefits from:

- Exclusive development in beautiful countryside location
- Modern open-plan living
- Floored & carpeted throughout
- High spec kitchen with integrated appliances
- Two beautifully finished bathrooms
- Private entrance
- Allocated parking

### Plot 373

|                |                 |
|----------------|-----------------|
| Kitchen/Living | 6670mm x 5210mm |
| Bedroom one    | 4370mm x 3830mm |
| Bedroom two    | 3230mm x 4010mm |






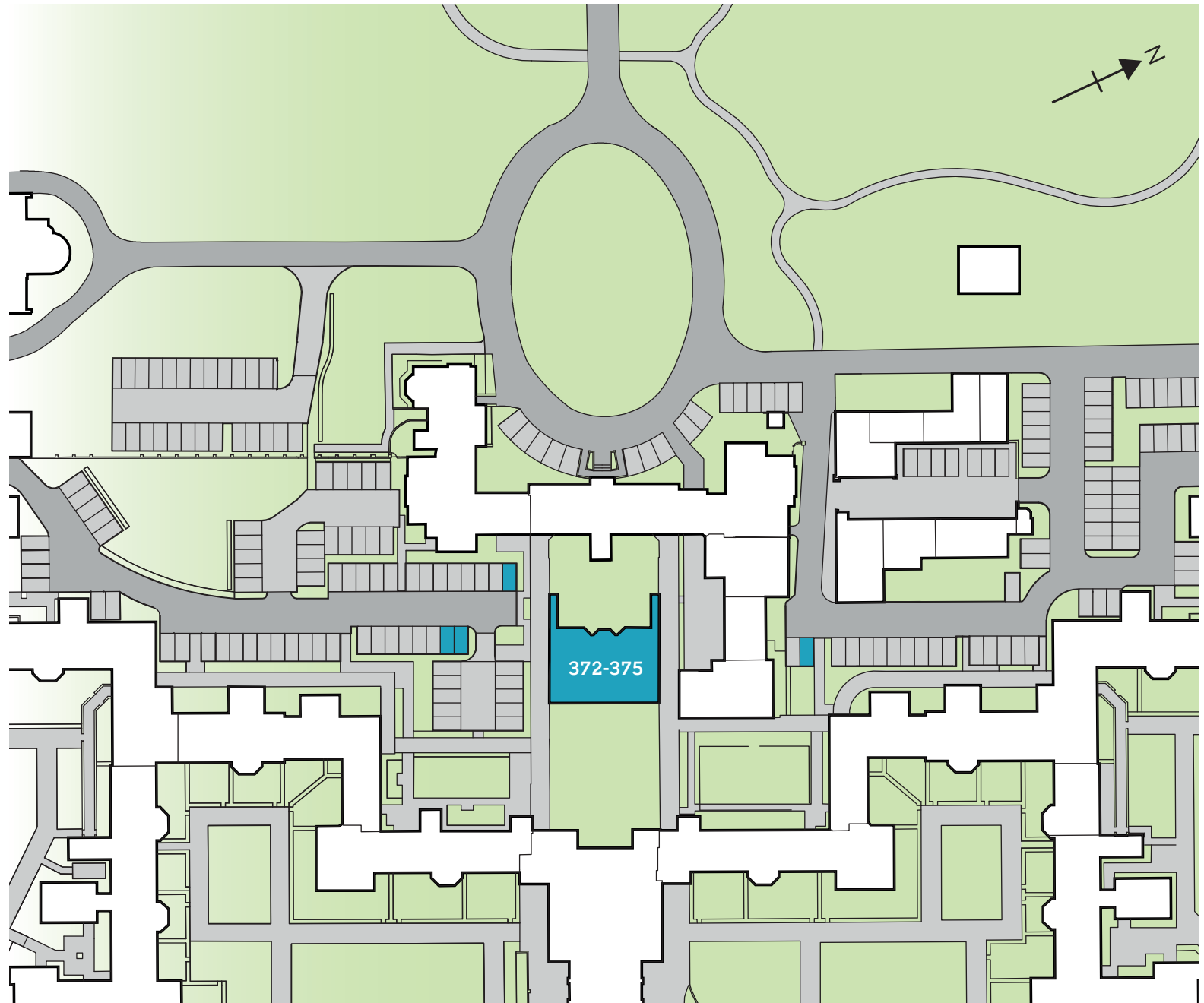
All dimensions are maximum.

## Fair Mile at Cholsey Meadows

Hermitage Court,  
Cholsey, Wallingford,  
Oxford OX10 9GE

Call **0300 330 0718**  
Visit **[sovereignliving.org.uk](https://www.sovereignliving.org.uk)**

-  Plot 372  
The Moulford  
2 bedroom apartment
-  Plot 373  
The Thames  
2 bedroom apartment
-  Plots 374 & 375  
The Oxford  
1 bedroom apartment





## Price list & availability

| Plot | Property details                  | Price    | 25% share | Monthly rent | Estimated monthly service charge | Availability   |
|------|-----------------------------------|----------|-----------|--------------|----------------------------------|----------------|
| 373  | Two bedroom first floor apartment | £355,000 | £88,750   | £554.69      | £89.01                           | Available Now! |

**Fair Mile**  
Cholsey

0300 330 0718  
[newbuildso@sovereign.org.uk](mailto:newbuildso@sovereign.org.uk)