

Potters Grove Type A5

2 Bedroom apartment
Plots 85, 95 & 105

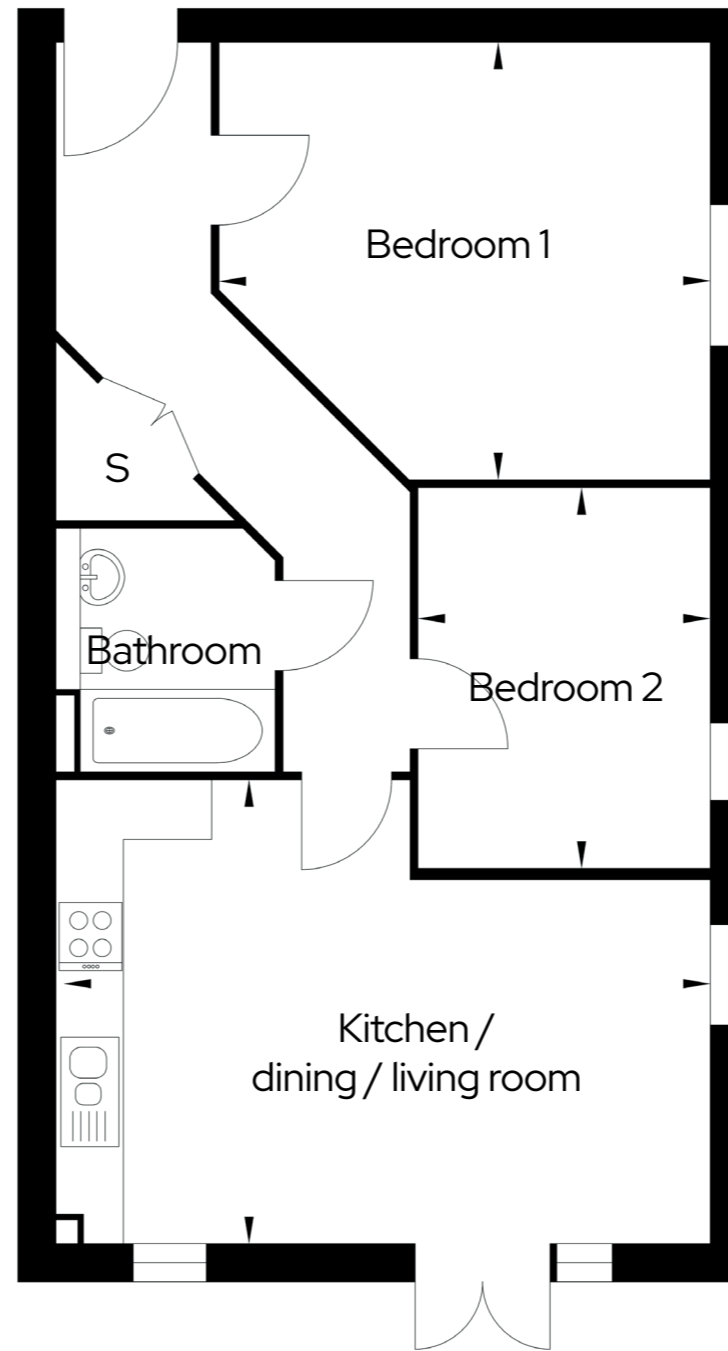
2  1  1 

Room

Kitchen/Dining/Living 5.8m x 4.1m

Bedroom one 3.9m x 4.4m

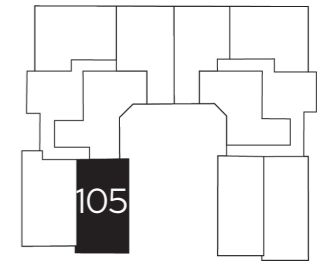
Bedroom two 3.4m x 2.6m



Apartment plan shown is the ground floor apartment number 85 with doors opening out onto a terrace

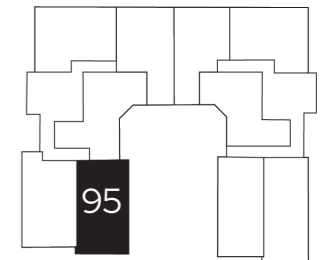
S Storage

Second Floor



This apartment has windows only to the kitchen/living/dining area and no opening doors

First Floor



This apartment has a Juliette balcony with doors opening inwards to the kitchen/living/dining area

Ground Floor

