



Stylish one
bedroom apartments
available with
shared ownership
at the Renaissance
development
in Reading



Renaissance Bayeux

Nightingale Way,
Reading RG30 1FD



Call **0300 330 0718**
Visit **sovereignliving.org.uk**

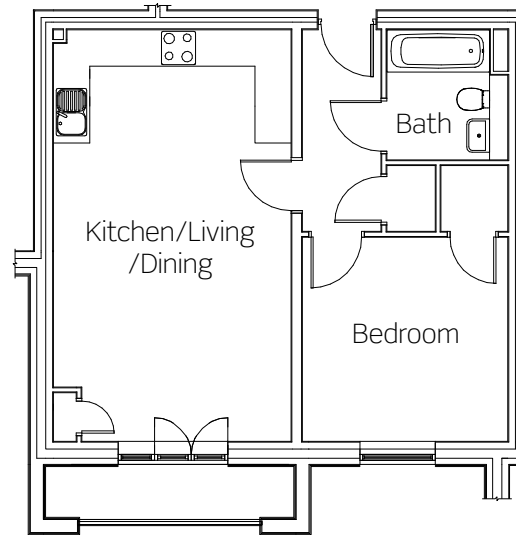
Renaissance Bayeux

Ideally suited for first time buyers, families, working professionals and commuters with a fantastic range of amenities, schools and nurseries nearby. Renaissance is close to a number of transport links providing swift access to the M4, M25 and London.

Plots 168, 173, 174 & 179

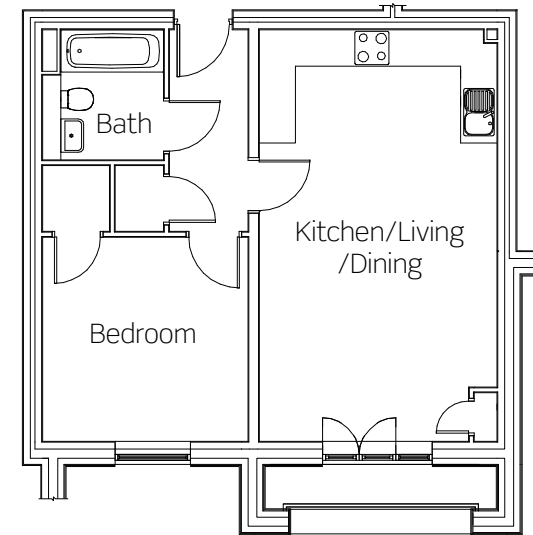
These new homes benefit from:

- Modern fitted kitchen with a built-in oven, hob and extractor
- Open-plan kitchen/living/dining
- Carpet and fridge/freezer included
- Stylish bathroom suite
- Balcony
- Allocated parking with EV charging point (Plot 168 only)



First floor: Plot 168
Second floor: Plot 174

Kitchen/Living/Dining 3981mm x 6858mm
Bedroom 3445mm x 3416mm



First floor: Plot 173
Second floor: Plot 179


Kitchen/Living/Dining 3981mm x 6858mm
Bedroom 3445mm x 3416mm

All dimensions are maximum.

Renaissance

Nightingale Way,
Reading RG30 1FD

Call **0300 330 0718**
Visit **sovereignliving.org.uk**

 Plots 168, 173, 174 & 179
1 bedroom apartment



Price list & availability

Plot	Property details	Price	40% share	Monthly rent	Estimated monthly service charge	Availability
168	1 Bedroom First Floor Apartment	£250,000	£100,000	£343.75	TBC	December 2020
173	1 Bedroom First floor Apartment	£250,000	£100,000	£343.75	TBC	RESERVED
174	1 Bedroom Second Floor Apartment	£250,000	£100,000	£343.75	TBC	RESERVED
179	1 Bedroom Second Floor Apartment	£250,000	£100,000	£343.75	TBC	RESERVED

**Portman Road,
Reading**

**0300 330 0718
newbuildso@sovereign.org.uk**