



Blackmore Meadows




A range of beautifully designed 2 and 3 bedroom homes

Rural tranquillity and character

A collection of 2 and 3 bedroom homes available with shared ownership. This popular development is situated in the small town of Stalbridge in Dorset, surrounded by beautiful countryside and the towns of Yeovil and Shaftsbury.

These new homes feature modern fitted kitchens with a built-in oven, hob and extractor, and an open-plan living/dining room with double doors opening onto a private enclosed garden laid to lawn. Carpets and flooring are provided throughout, and the master bedroom includes fitted wardrobes. Outside, residents will also benefit from two allocated car parking spaces.



-  **The Bibbern**
-  **The Stour**
-  **Parking spaces**



Blackmore Meadows
Bagber Road,
Stalbridge,
Sturminster Newton
DT10 2FL

Blackmore Meadows
Barnes Close,
Stalbridge,
Sturminster Newton
DT10 2FN

Blackmore Meadows
Glovers Road,
Stalbridge,
Sturminster Newton
DT10 2FP



Computer generated images and photographs are for illustration purposes only and may not accurately depict individual plots. For exact plot specification, details of external and internal finishes, speak to a Sales Consultant.

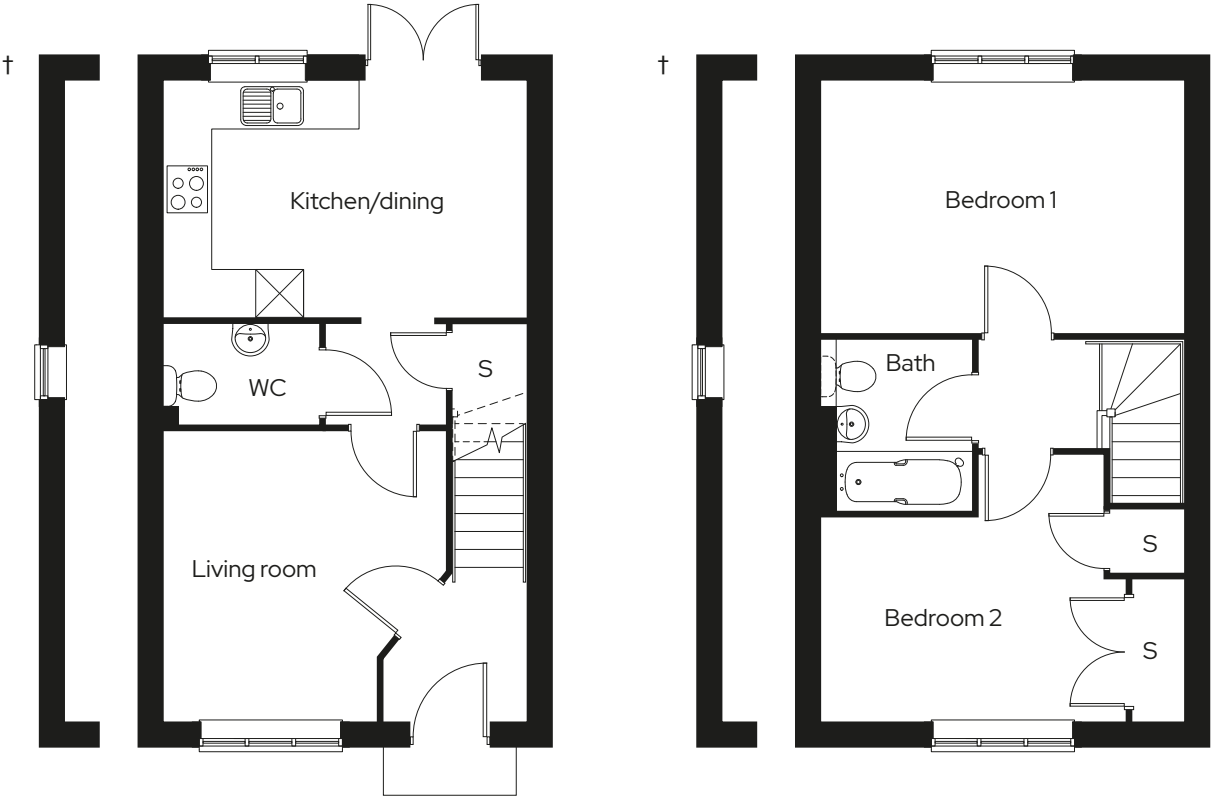


The Bibbern

2 bed terraced
Plot 48,* 49,* 50, 60, 61,* 62,* 72*

2 1 2

Room	
Kitchen/dining room	4.6m x 3.0m
Living room	3.7m x 3.6m
Master bedroom	4.6m x 3.2m
Bedroom 2	4.6m x 2.6m



* Mirrored plot S Storage
† Side windows in end terrace plots only

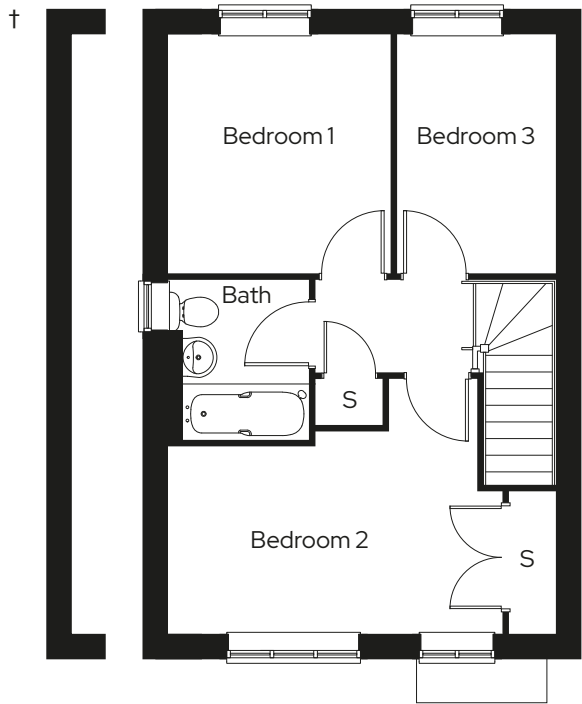
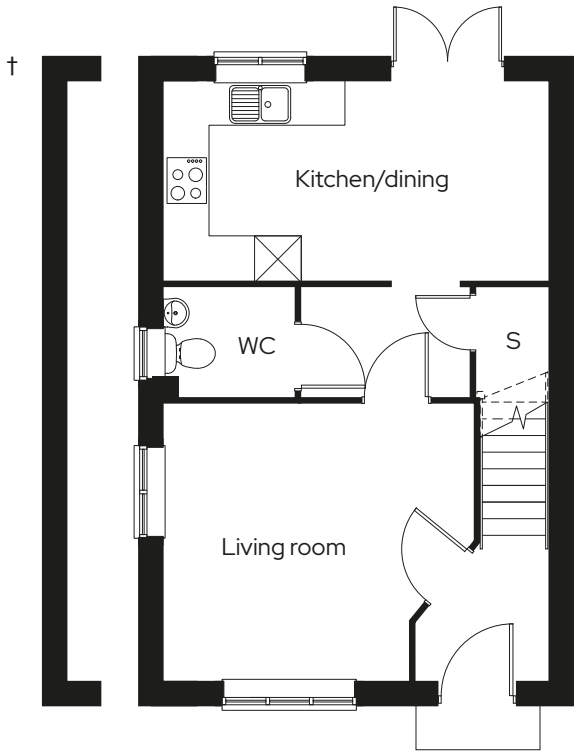
We operate a policy of continuous product development and individual features such as windows and elevational treatments may vary. Consequently, particulars contained within this document should be treated as general guidance only. They do not constitute a contract, part of a contract or a warranty. Computer generated images and photographs are for illustration purposes only and may not accurately depict individual plots. Dimensions provided are for general guidance and are not intended to be used for carpet sizes, appliances, spaces or items of furniture.

The Stour

3 bed semi-detached/
3 bed end terraced
Plot 51,* 52, 59,* 63, 64,* 65, 73

3 1 2

Room	
Kitchen/dining room	5.2m x 2.7m
Living room	3.7m x 3.3m
Master bedroom	3.3m x 3.0m
Bedroom 2	3.3m x 2.1m
Bedroom 3	4.5m x 2.5m



* Mirrored plot S Storage

† No side windows on plot 65

We operate a policy of continuous product development and individual features such as windows and elevational treatments may vary. Consequently, particulars contained within this document should be treated as general guidance only. They do not constitute a contract, part of a contract or a warranty. Computer generated images and photographs are for illustration purposes only and may not accurately depict individual plots. Dimensions provided are for general guidance and are not intended to be used for carpet sizes, appliances, spaces or items of furniture.

Sovereign has an established reputation as one of the south's leading shared ownership and market rent providers and has already helped to find new homes for over 4,000 people.

With 20 years' experience of developing home ownership solutions, Sovereign is dedicated to providing, quality, affordable housing in neighbourhoods where people want to live.

Get in touch

0300 330 0718

To find out more about shared ownership and the homes we offer, get in touch today.

→ sovereignliving.org.uk

Head office

Sovereign House
Basing View
Basingstoke
RG21 4FA