



Stylish one bedroom apartments available with shared ownership at the brand new development of Steel Hill in Newbury



Steel Hill

Haywood House,
Steel Close, Newbury
RG14 7DT



Call **0300 330 0718**
Visit **sovereignliving.org.uk**

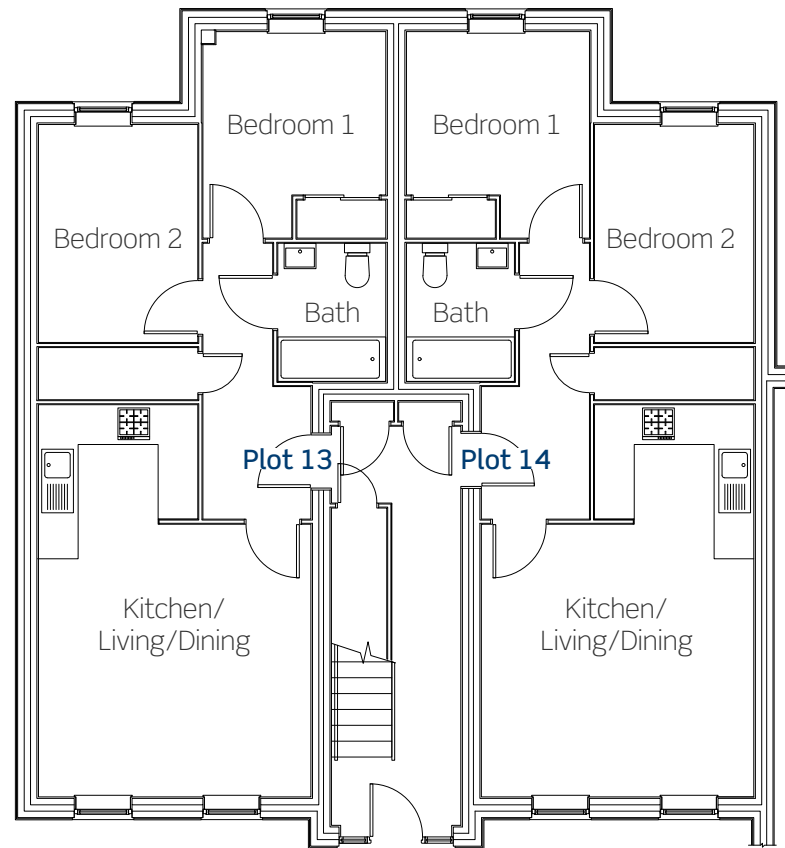
Steel Hill

Ideally suited for first time buyers and commuters with its fantastic range of local amenities within a short walking distance, and being conveniently close to transport links such as the A34, A4 and M4.

Plots 13 & 14

These new homes benefit from:

- Modern fitted kitchen with built-in oven, hob and extractor
- Open-plan kitchen/living/dining
- Stylish bathroom suite
- Storage cupboard in hallway
- Allocated parking space



Dimensions: Ground floor

Kitchen/Living/Dining	4337mm x 6212mm
Bedroom one	2920mm x 2612mm
Bedroom two	2547mm x 3472mm

All dimensions are maximum.

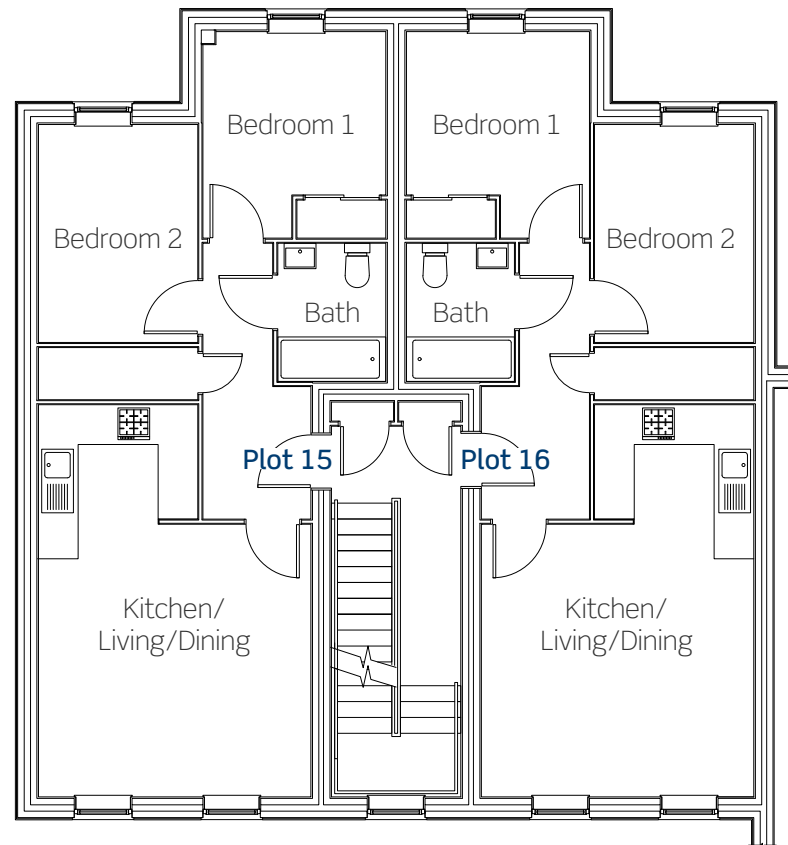
Steel Hill

Ideally suited for first time buyers and commuters with its fantastic range of local amenities within a short walking distance, and being conveniently close to transport links such as the A34, A4 and M4.

Plots 15 & 16

These new homes benefit from:

- Modern fitted kitchen with built-in oven, hob and extractor
- Open-plan kitchen/living/dining
- Stylish bathroom suite
- Storage cupboard in hallway
- Allocated parking space



Dimensions: First floor

Kitchen/Living/Dining	4337mm x 6212mm
Bedroom one	2920mm x 2612mm
Bedroom two	2547mm x 3472mm

All dimensions are maximum.

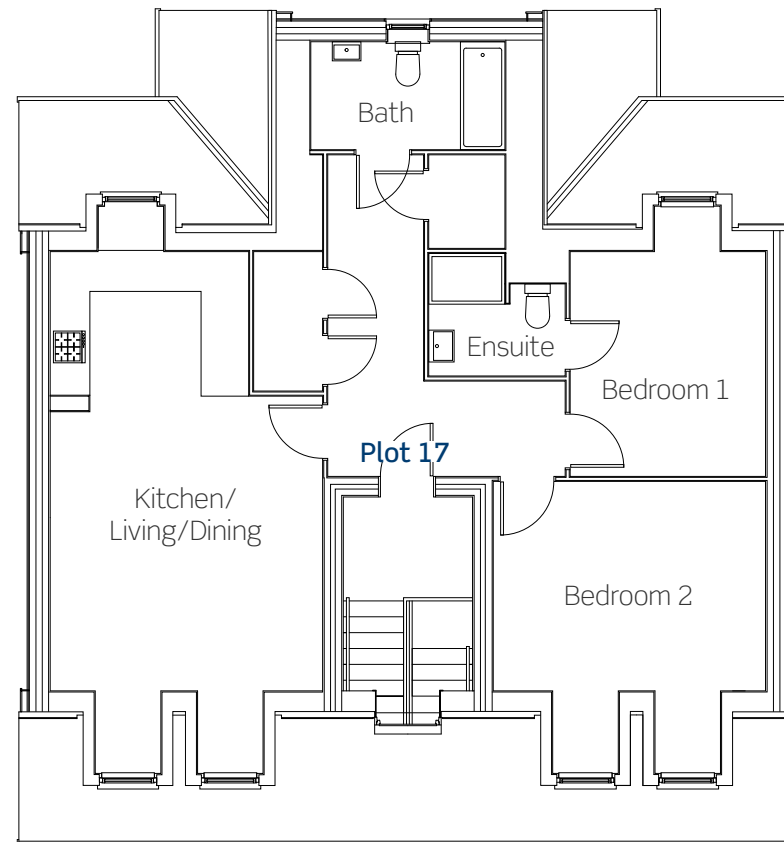
Steel Hill

Ideally suited for first time buyers and commuters with its fantastic range of local amenities within a short walking distance, and being conveniently close to transport links such as the A34, A4 and M4.

Plot 17

This new home benefits from:

- Modern fitted kitchen with built-in oven, hob and extractor
- Open-plan kitchen/living/dining
- Stylish bathroom suite
- En-suite with shower to bedroom one
- Storage cupboards in hallway
- Allocated parking space



Dimensions: Second floor

Kitchen/Living/Dining	4337mm x 6915mm
Bedroom one	3115mm x 3552mm
Bedroom two	4337mm x 3312mm

All dimensions are maximum.



Stylish two bedroom apartments available with shared ownership at the brand new development of Steel Hill in Newbury



Steel Hill

Gilkes House, Steel Close,
Newbury RG14 7DT



Call **0300 330 0718**
Visit **sovereignliving.org.uk**

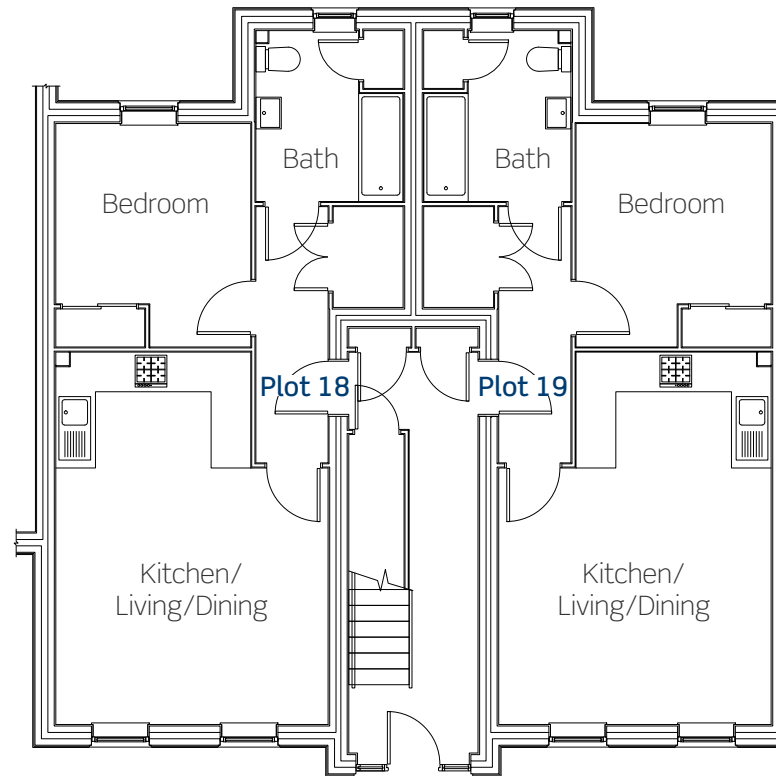
Steel Hill

Ideally suited for first time buyers and commuters with its fantastic range of local amenities within a short walking distance, and being conveniently close to transport links such as the A34, A4 and M4.

Plots 18 & 19

These new homes benefit from:

- Modern fitted kitchen with built-in oven, hob and extractor
- Open-plan kitchen/living/dining
- Stylish bathroom suite
- Built-in wardrobe to bedroom
- Storage cupboard in hallway
- Allocated parking space



Dimensions: Ground floor

Kitchen/Living/Dining	4337mm x 5902mm
Bedroom one	3110mm x 3485mm

All dimensions are maximum.

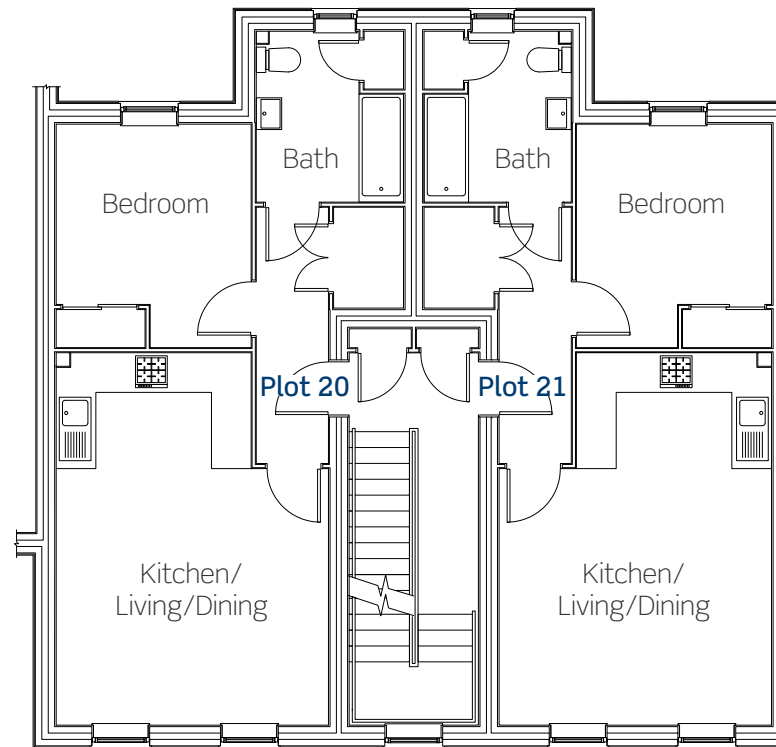
Steel Hill

Ideally suited for first time buyers and commuters with its fantastic range of local amenities within a short walking distance, and being conveniently close to transport links such as the A34, A4 and M4.

Plots 20 & 21

These new homes benefit from:

- Modern fitted kitchen with built-in oven, hob and extractor
- Open-plan kitchen/living/dining
- Stylish bathroom suite
- Built-in wardrobe to bedroom
- Storage cupboard in hallway
- Allocated parking space



Dimensions: First floor

Kitchen/Living/Dining	4337mm x 5902mm
Bedroom one	3110mm x 3485mm

All dimensions are maximum.

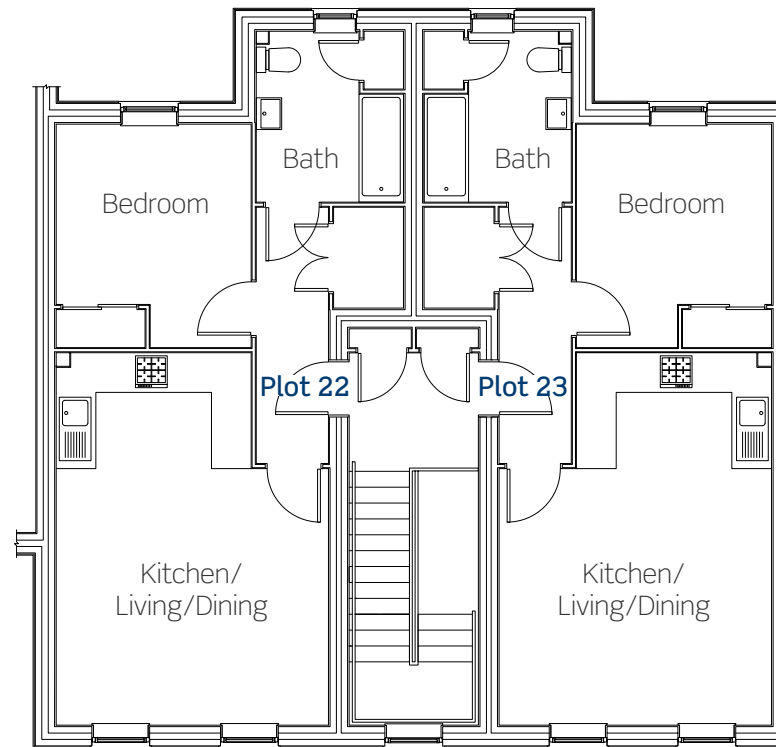
Steel Hill

Ideally suited for first time buyers and commuters with its fantastic range of local amenities within a short walking distance, and being conveniently close to transport links such as the A34, A4 and M4.

Plots 22 & 23

These new homes benefit from:

- Modern fitted kitchen with built-in oven, hob and extractor
- Open-plan kitchen/living/dining
- Stylish bathroom suite
- Built-in wardrobe to bedroom
- Storage cupboard in hallway
- Allocated parking space



Dimensions: Second floor



Kitchen/Living/Dining	4340mm x 5862mm
Bedroom one	3110mm x 2855mm

All dimensions are maximum.

Steel Hill

Steel Close,
Newbury RG14 7DT

Call **0300 330 0718**
Visit **sovereignliving.org.uk**

-  Gilkes House
Plots 13-17
2 bedroom apartment
-  Haywood House
Plots 18-23
1 bedroom apartment



Price list & availability

Plot	Property details	Price	40% share	Monthly rent	Monthly service charge	Availability
13	2 bedroom ground floor apartment	£225,000	£90,000	£281.25	68.04	Reserved
14	2 bedroom ground floor apartment	£225,000	£90,000	£281.25	£68.04	Reserved
15	2 bedroom first floor apartment	£225,000	£90,000	£281.25	£68.04	Reserved
16	2 bedroom first floor apartment	£225,000	£90,000	£281.25	£68.04	Reserved
17	2 bedroom second floor apartment	£260,000	£104,000	£325	£68.04	Reserved
18	1 bedroom ground floor apartment	£200,000	£80,000	£250	£68.04	Reserved

Steel Hill

Newbury

0300 330 0718
newbuildSO@sovereign.org.uk

Price list & availability

Plot	Property details	Price	40% share	Monthly rent	Monthly service charge	Availability
19	1 bedroom ground floor apartment	£200,000	£80,000	£250	£68.04	March 2020
20	1 bedroom first floor apartment	£200,000	£80,000	£250	£68.04	Reserved
21	1 bedroom first floor apartment	£200,000	£80,000	£250	£68.04	Reserved
22	1 bedroom second floor apartment	£200,000	£80,000	£250	£68.04	Reserved
23	1 bedroom second floor apartment	£200,000	£80,000	£250	£68.04	Reserved

Steel Hill

Newbury

0300 330 0718
newbuildSO@sovereign.org.uk