



Beautifully designed one and two bedroom apartments available with shared ownership



Wilkins Court

9-11 Deanfield Avenue,
Henley-on-Thames,
Oxfordshire RG9 1UE



Call **0300 330 0718**
Visit **[sovereignliving.org.uk](https://www.sovereignliving.org.uk)**

Incentives available on specific plots – please enquire with the Sales Team for further information.

Price list & availability

| Plot | Property details | Price | Available From a 30% Share | Monthly Rent | Estimated Monthly Service Charge | Availability |
|------|--|----------|----------------------------|--------------|----------------------------------|----------------------|
| 5 | One bedroom first floor apartment | £295,000 | £88,500 | £430.21 | £167.36 | Available now |
| 9 | One bedroom second floor apartment with a juliet balcony | £295,000 | £88,500 | £430.21 | £167.36 | Available now |

**Wilkins Court
Henley-On-Thames**

**0300 330 0718
newbuildso@sovereign.org.uk**

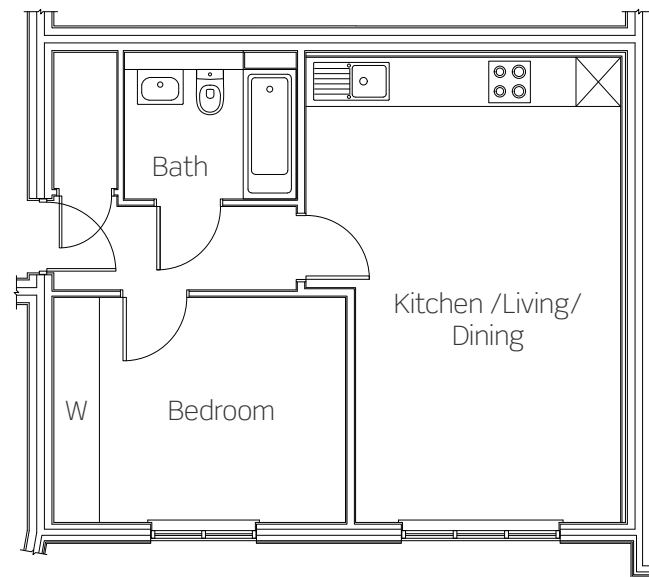
Wilkins Court

Living at Wilkins Court, you'll be situated just a 5 minute walk from Henley's high street, benefit from excellent links to nearby towns and have the countryside right on your doorstep.

Plots 2, 5 & 8

These new homes benefit from:

- Modern fitted kitchen with built-in oven, hob & extractor
- Open-plan kitchen/living/dining
- Stylish bathroom suite with bath
- Carpets and flooring included throughout
- Fitted wardrobe to bedroom
- Allocated parking space in secure gated carpark
- Communal gardens



Plot 2: Upper ground floor

Kitchen/Living/Dining 4265mm x 6165mm
Bedroom 3900mm x 3015mm

Floor plan shows Plot 2,
other Plots may vary.
W - Fitted wardrobe.
All dimensions are maximum.

Plot 2: Upper ground floor
Plot 5: First floor
Plot 8: Second floor

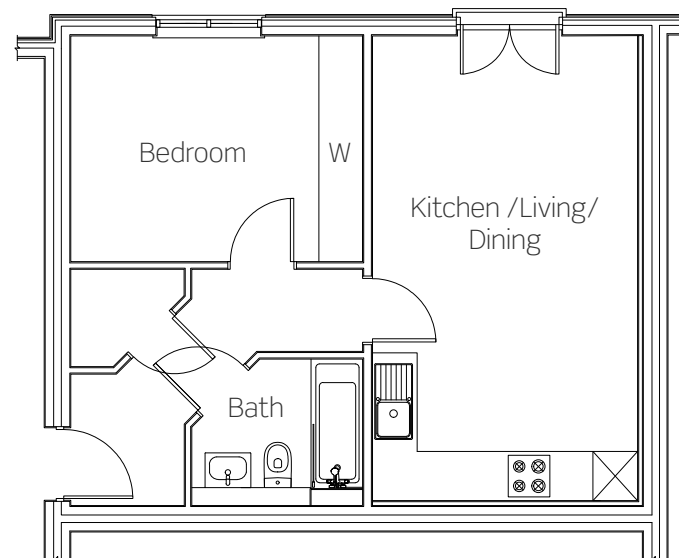
Wilkins Court

Living at Wilkins Court, you'll be situated just a 5 minute walk from Henley's high street, benefit from excellent links to nearby towns and have the countryside right on your doorstep.

Plot 9

This new home benefits from:

- Modern fitted kitchen with built-in oven, hob & extractor
- Open-plan kitchen/living/dining with a Juliet balcony
- Stylish bathroom suite with bath
- Carpets and flooring included throughout
- Fitted wardrobe to bedroom
- Allocated parking space in secure gated carpark
- Communal gardens



Plot 9: Second floor

| | |
|-----------------------|-----------------|
| Kitchen/Living/Dining | 3625mm x 6265mm |
| Bedroom | 3890mm x 3030mm |

W - Fitted wardrobe.
All dimensions are maximum.

Wilkins Court

9-11 Deanfield Avenue,
Henley-on-Thames,
Oxfordshire RG9 1UE

Call **0300 330 0718**
Visit **[sovereignliving.org.uk](https://www.sovereignliving.org.uk)**

- Plots 1, 4 & 7
2 bedroom apartment
- Plots 2, 3, 5, 6, 8 & 9
1 bedroom apartment

