



# Brooklands Park



A stunning collection of 2 bedroom homes


# An exciting new development

**A stunning collection of 2 bedroom homes available with shared ownership at the exciting new development of Brooklands Park.**

Situated in the sought-after area of Stoke Gifford, Bristol, each home comes complete with a modern fitted kitchen with a built-in oven, hob and extractor, a spacious open plan living/dining area and downstairs cloakroom. Also benefitting from generous-sized bedrooms, stylish bathroom suite with shower over bath, private garden laid to lawn and two allocated parking spaces.



-  **The Arlington**
-  **Parking spaces**

 **Shepherd Close,**  
Stoke Gifford,  
Bristol,  
South Gloucestershire,  
BS34 8BA

North










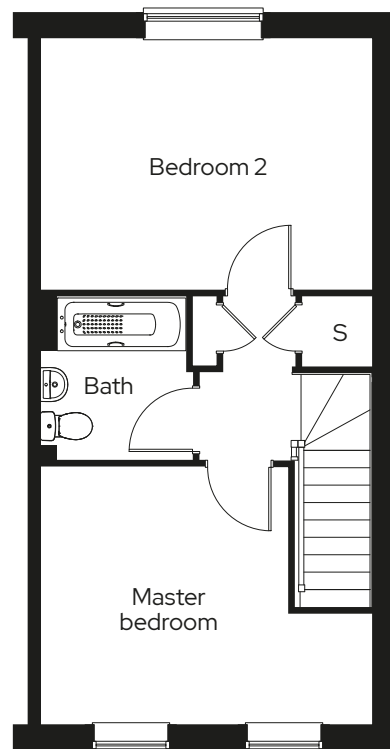
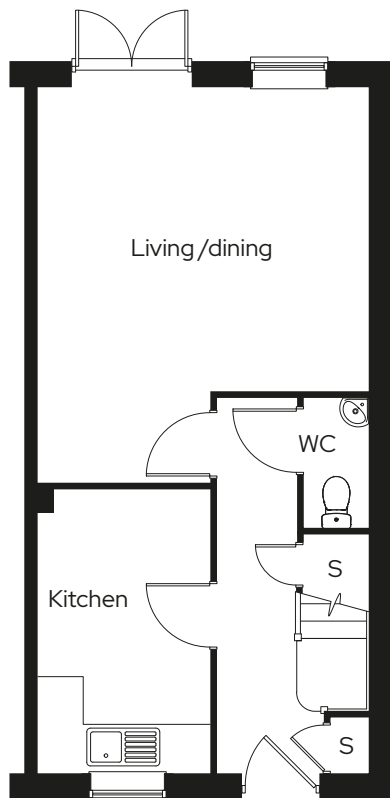
# The Arlington

2 bed end terraced  
Plot 307, 310

2  1  2 

## Room

Living/dining room	4.6m x 4.4m
Kitchen	3.8m x 2.3m
Master bedroom	4.4m x 3.4m
Bedroom 2	4.4m x 3.4m






**S** Storage

We operate a policy of continuous product development and individual features such as windows and elevational treatments may vary. Consequently, particulars contained within this document should be treated as general guidance only. They do not constitute a contract, part of a contract or a warranty. Computer generated images and photographs are for illustration purposes only and may not accurately depict individual plots. Dimensions provided are for general guidance and are not intended to be used for carpet sizes, appliances, spaces or items of furniture. All dimensions are maximum.



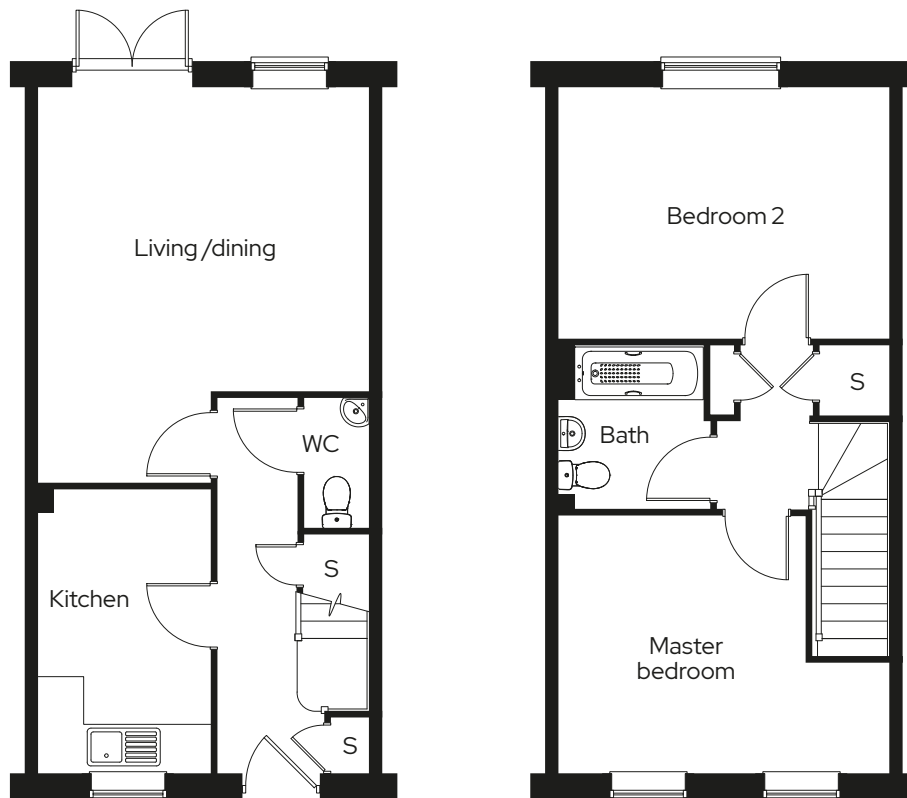
# The Arlington

2 bed mid terraced  
Plot 308\*, 309

2  1  2 

## Room

Living/dining room	4.6m x 4.4m
Kitchen	3.8m x 2.3m
Master bedroom	4.4m x 3.4m
Bedroom 2	4.4m x 3.4m



\* Mirrored plot S Storage

We operate a policy of continuous product development and individual features such as windows and elevational treatments may vary. Consequently, particulars contained within this document should be treated as general guidance only. They do not constitute a contract, part of a contract or a warranty. Computer generated images and photographs are for illustration purposes only and may not accurately depict individual plots. Dimensions provided are for general guidance and are not intended to be used for carpet sizes, appliances, spaces or items of furniture. All dimensions are maximum.

Sovereign has an established reputation as one of the south's leading shared ownership and market rent providers and has already helped to find new homes for over 4,000 people.

With 20 years' experience of developing home ownership solutions, Sovereign is dedicated to providing, quality, affordable housing in neighbourhoods where people want to live.

## Get in touch

### 0300 330 0718

To find out more about shared ownership and the homes we offer, get in touch today.

→ [sovereignliving.org.uk](https://sovereignliving.org.uk)

### Head office

Sovereign House  
Basing View  
Basingstoke  
RG21 4FA