



Badbury Park

Perfect for modern living

Combining convenience with charm

A small collection of charming 2 & 3 bedroom homes available with shared ownership are coming soon to the Badbury Park development in Swindon.

Designed with you in mind, these brand-new homes come complete with a modern fitted kitchen, built-in storage space, downstairs cloakroom, stylish bathroom suite and spacious bedrooms. Whilst outside, there is a private garden laid to lawn for you to enjoy.



- Frome
- Avon
- Avon 3
- Parking spaces

🏠 Plot 7017
Badbury Park,
Homington Terrace,
Swindon,
SN3 6FU

Plot 7020, 7021
Badbury Park,
Clyffe Close,
Swindon,
SN3 6FR





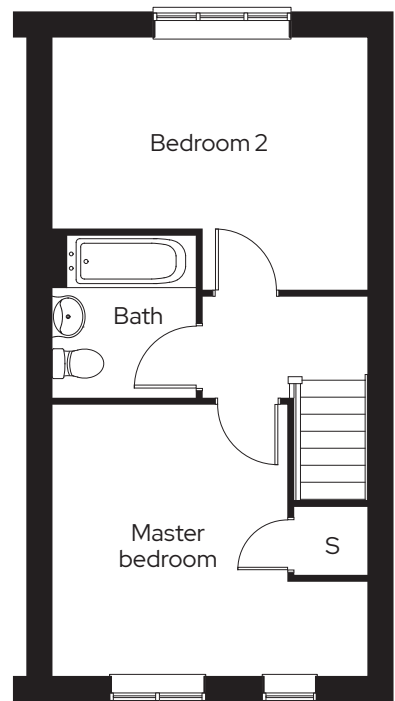
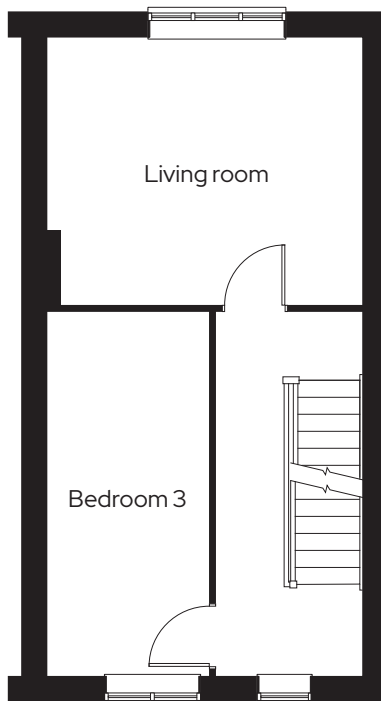
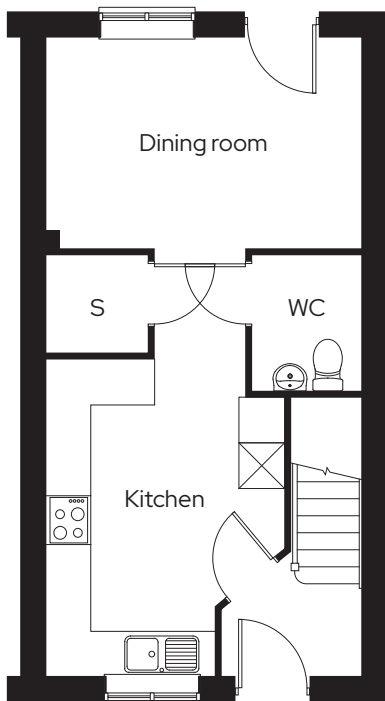
Frome

3 bedroom end terraced
Plot 7017

3  1  2 

Room

Kitchen	3.3m x 4.2m
Living room	4.2m x 3.6m
Dining room	4.2m x 2.8m
Master bedroom	4.2m x 3.6m
Bedroom 2	4.2m x 3.4m
Bedroom 3	2.2m x 4.9m



S Storage

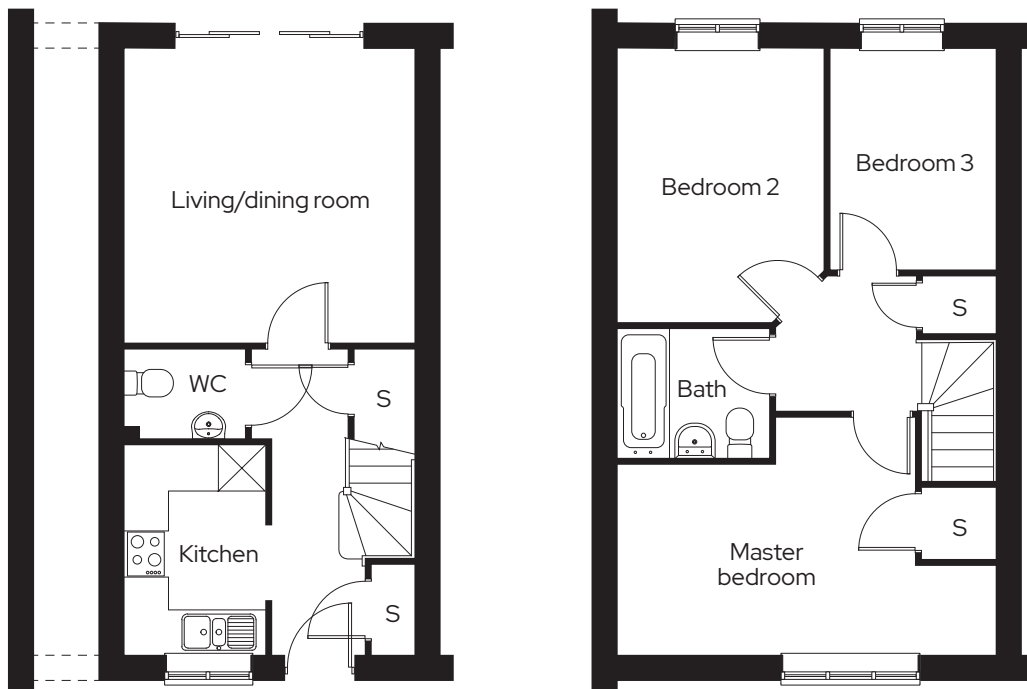
Avon 3

3 bedroom mid terraced
Plot 7020

3  1  2 

Room

Kitchen	1.9m x 2.8m
Living/dining room	3.9m x 3.9m
Master bedroom	5.1m x 3.2m
Bedroom 2	2.8m x 3.6m
Bedroom 3	2.2m x 2.9m



S Storage

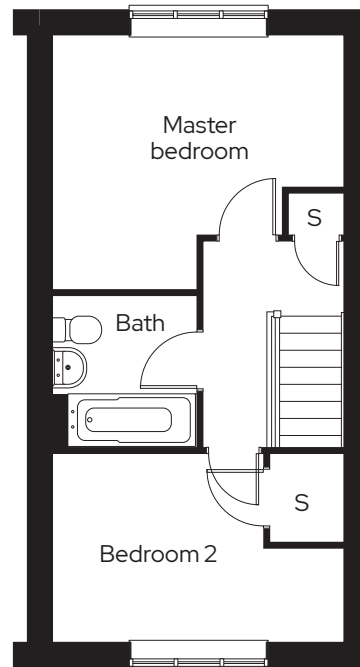
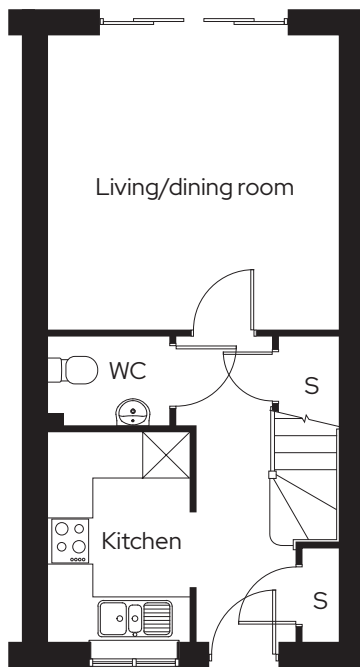
Avon

2 bedroom end terraced
Plot 7021

2  1  2 

Room

Kitchen	1.9m x 2.8m
Living/dining room	3.9m x 3.9m
Master bedroom	3.9m x 3.4m
Bedroom 2	3.9m x 2.5m



S Storage

Get in touch

0300 330 0718

To find out more about shared ownership and the homes we offer, get in touch today.

→ sovereignliving.org.uk

Head office

Sovereign House
Basing View
Basingstoke
RG21 4FA

As one of the UK's leading shared ownership providers, Sovereign is passionate about giving everyone the opportunity to own their own home.

Our highly dedicated sales team has already helped thousands of people step onto the property ladder and our profit with a purpose principle means we can continue to help thousands more. Established, experienced, and affordable, we are proud to help more people live where they love.