



Centenary Quay

Stylish one and two bedroom apartments

Contemporary riverside living

Located on the eastern bank of the River Itchen in the suburb of Woolston, Southampton.

This popular new development brings together residential and commercial properties, making it a perfect location where you can live, work and relax. This is an ideal place for first time buyers, working professionals and commuters to call home!



- Arcadia
- Adonia

Centenary Quay
John Thornycroft Road,
Southampton
SO19 9XE

North





Arcadia

2 Bedroom apartment
Plots 5001, 5005, 5009 & 5013

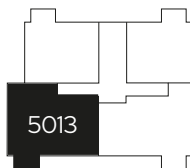
2  1  1 

Room

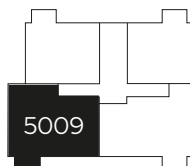
Kitchen/dining/ living	3.8m x 7.6m
Bedroom 1	3.0m x 6.2m
Bedroom 2	2.8m x 4.0m



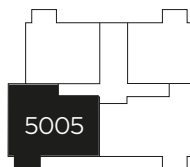
Third
Floor



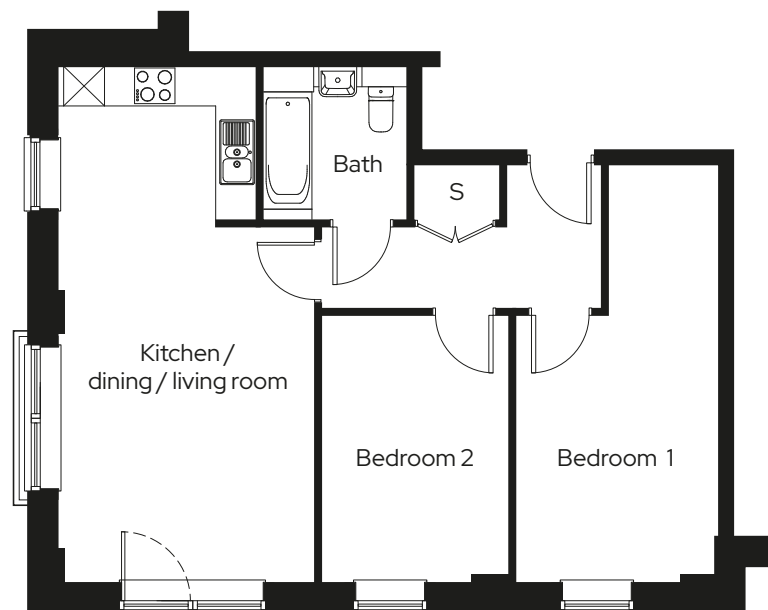
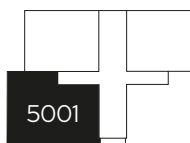
Second
Floor



First
Floor



Ground
Floor



S Storage

We operate a policy of continuous product development and individual features such as windows and elevational treatments may vary. Consequently, particulars contained within this document should be treated as general guidance only. They do not constitute a contract, part of a contract or a warranty. Computer generated images and photographs are for illustration purposes only and may not accurately depict individual plots. Dimensions provided are for general guidance and are not intended to be used for carpet sizes, appliances, spaces or items of furniture. All dimensions are maximum.

Sovereign has an established reputation as one of the south's leading shared ownership and market rent providers and has already helped to find new homes for over 4,000 people.

With 20 years' experience of developing home ownership solutions, Sovereign is dedicated to providing, quality, affordable housing in neighbourhoods where people want to live.

Get in touch

0300 330 0718

To find out more about shared ownership and the homes we offer, get in touch today.

→ sovereignliving.org.uk

Head office

Sovereign House
Basing View
Basingstoke
RG21 4FA

Centenary Quay

Price list & availability

Contact

0300 330 0718

newbuildso@sovereign.org.uk

Plot No.	Property details	Price	Minimum % share	Share price	Monthly rent	Est. monthly service charge
----------	------------------	-------	-----------------	-------------	--------------	-----------------------------

2 bed apartments

5001	Ground floor apartment with private terrace	£205,000	25%	£51,250	£320.10	£134.78
5005	First floor apartment	£210,000	25%	£52,500	£328.13	£134.78
5012	Second floor apartment	£215,000	25%	£53,750	£335.94	£134.78
5013	Third floor apartment	£215,000	25%	£53,750	£335.94	£134.78

Prices, monthly rental charge and services charge are correct at time of print and subject to annual review. Management fee under review. Eligibility conditions apply and can be found at www.sovereign.org.uk. September 2020

Sovereign Housing Association Limited is charitable