



PANORAMICA DEL PRODOTTO

Italia

MR018 / 1022

JORISIDE
THE STEEL FUTURE



Joris Ide NV, is not responsible for printing errors and / or any differences between the images in this catalogue and the final product delivered. Joris Ide NV reserves the right to modify the technical specifications at any time without prior notice. To ensure that you have the latest version at hand, we invite you to scan this QR code to retrieve the latest version on our website: www.jorisode.com



PANORAMICA DEL PRODOTTO

Index

Profili di copertura	2
Profili a muro	6
Vassoi di supporto dell' isolamento a muro	9
Profilo di supporto di tenuta	10
Profili zincati	12
Pannelli isolanti	14
Accessori traslucidi	18

Italia

Con più di 30 anni esperienza, il gruppo Joris Ide rappresenta oggi un impegno qualità con le parti interessate mercato delle costruzioni. Forniamo soluzioni costruzione e ristrutturazione progetti di grande diversità di clienti attraverso uno le gamme più ampie di mercato con i nostri pannelli sandwich, prodotti per coperture, facciata, vassoi, supporti di tenuta, pavimenti, arcarecci e travi, pieghevole e accessori ...



La nostra gamma di prodotti può soddisfare tutte le esigenze e tipi di problemi: acustica, estetico, fuoco, termico. Le applicazioni sono agricole, industriale, residenziale, terziario. Grazie alla sua flessibilità, è ampia gamma di prodotti, la sua organizzazione esperto, è Joris Ide oggi il partner essenziale di tutti i tuoi progetti.

Opzioni disponibili:

Antigoccia



Taglio antigoccia



Perforazione



Liscio, curvo



Acciaio inossidabile (materiale su richiesta)



Ordini a colori per ordini specificare!

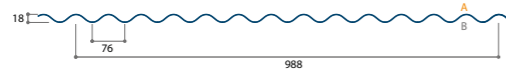
Profili di copertura

Ordini a colori per ordini specificare!

JI 18-076-988



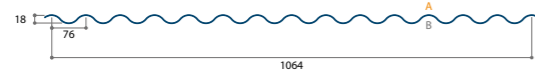
Spessore (mm)	Massa (kg/m ²)
0,50	4,85
0,60	5,82
0,70	6,79



JID 18-76-1064



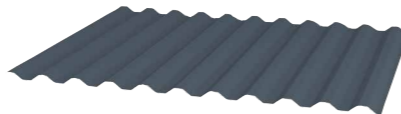
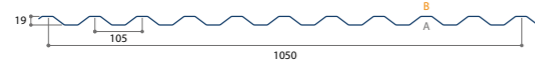
Spessore (mm)	Massa (kg/m ²)
0,50	4,61
0,63	5,81
0,75	6,92
0,88	8,12
1,00	9,22



JID 19-105-1050



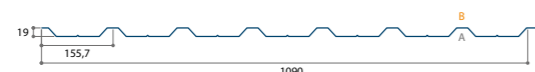
Spessore (mm)	Massa (kg/m ²)
0,50	4,67
0,63	5,89
0,75	7,01
0,88	8,22
1,00	9,35



JI 19-155-1090 Copertura



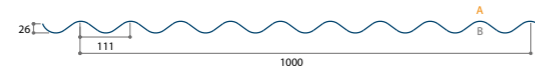
Spessore (mm)	Massa (kg/m ²)
0,50	4,39
0,60	5,27
0,70	6,15



JID 27-111-1000



Spessore (mm)	Massa (kg/m ²)
0,50	4,91
0,63	6,18
0,75	7,36
0,88	8,64
1,00	9,81



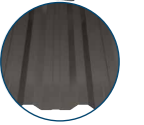
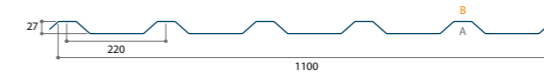
Profili di copertura

Ordini a colori per ordini specificare!

JID 30-220-1100 Copertura



Spessore (mm)	Massa (kg/m ²)
0,50	4,46
0,63	5,62
0,75	6,69
0,88	7,85
1,00	8,92



Opzionale: con nervatura di rinforzo

JI 33-250-1000 Copertura



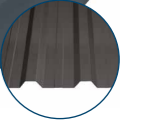
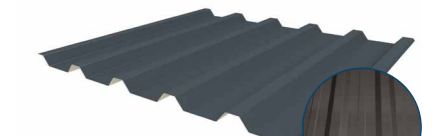
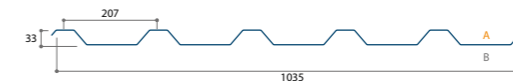
Spessore (mm)	Massa (kg/m ²)
0,50	4,79
0,63	6,03
0,75	7,18



JI 35-207-1035 Copertura



Spessore (mm)	Massa (kg/m ²)
0,50	4,63
0,63	5,83
0,75	6,94

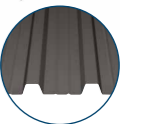
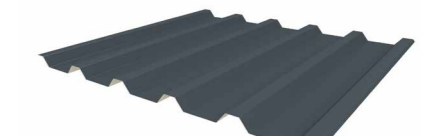


Opzionale: con nervatura di rinforzo

JID 35-207-1035



Spessore (mm)	Massa (kg/m ²)
0,63	5,97
0,75	7,11
0,88	8,34
1,00	9,48

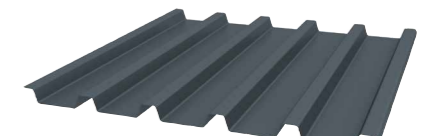


Opzionale: con nervatura di rinforzo

JI 40-183-915 Copertura



Spessore (mm)	Massa (kg/m ²)
0,50	5,23
0,60	6,28
0,75	7,85



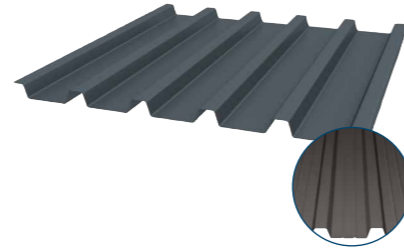
Profili di copertura

Ordini a colori per ordini specificare!

JID 40-183-915 Copertura



Spessore (mm)	Massa (kg/m ²)
0,50	5,36
0,63	6,76
0,75	8,04
0,88	9,44
1,00	10,72

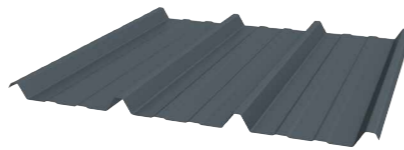
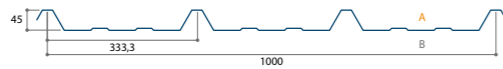


Opzionale: con nervatura di rinforzo

JI 45-333-1000 Copertura



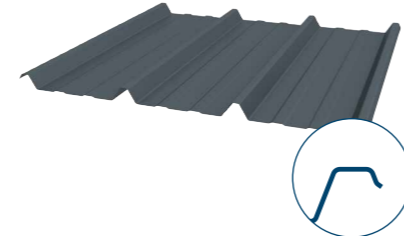
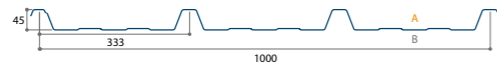
Spessore (mm)	Massa (kg/m ²)
0,50	4,79
0,63	6,03
0,75	7,18



JID 45-333-1000



Spessore (mm)	Massa (kg/m ²)
0,50	4,91
0,63	6,18
0,75	7,36
0,88	8,64
1,00	9,81

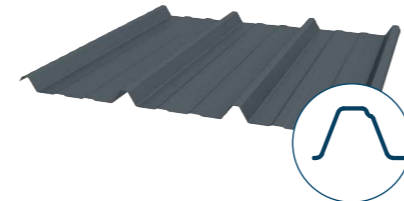


Con piede allargato

JID 45-333-1000 con gamba di supporto



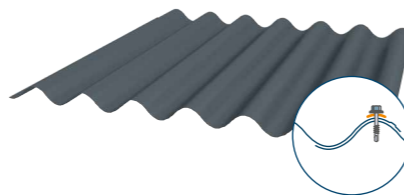
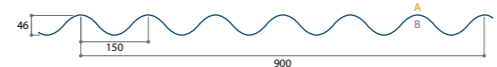
Spessore (mm)	Massa (kg/m ²)
0,75	7,51



Con gamba di supporto

JI 46-150-900 Copertura

Spessore (mm)	Massa (kg/m ²)
0,75	7,98



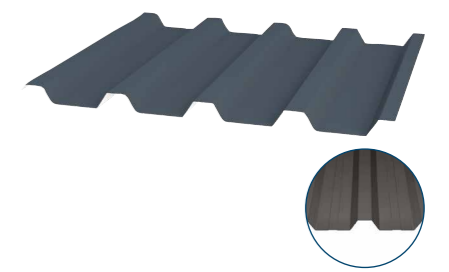
Profili di copertura

Ordini a colori per ordini specificare!

JID 50-250-1000



Spessore (mm)	Massa (kg/m ²)
0,50	4,91
0,63	6,18
0,75	7,36
0,88	8,64
1,00	9,81



Opzionale: con nervatura di rinforzo

JID 56-317-945



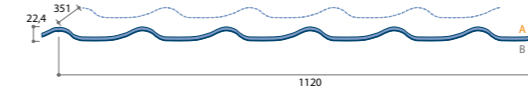
Spessore (mm)	Massa (kg/m ²)
0,50	5,19
0,63	6,54
0,75	7,79
0,88	9,14
1,00	10,38



JID 22-187-1120 Panel-tile



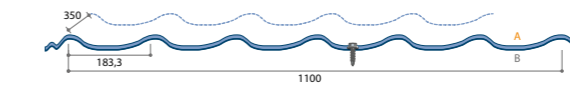
Spessore (mm)	Massa (kg/m ²)
0,50	4,38
0,63	5,52
0,75	6,57



JI 24-183-1100 Panel-tile



Spessore (mm)	Massa (kg/m ²)
0,50	4,46



JI Vieo Edge 500

Spessore (mm)	Massa (kg/m ²)
0,60	5,75

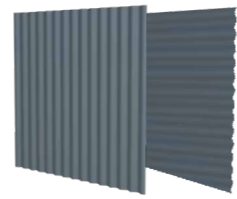
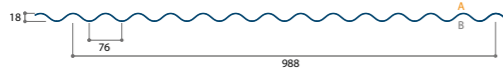


Profili a muro

Ordini a colori per ordini specificare!

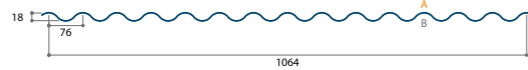
JI 18-076-988

Spessore (mm)	Massa (kg/m ²)
0,50	4,85
0,60	5,82
0,70	6,79



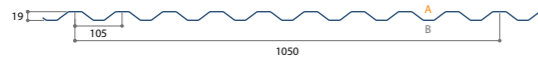
JID 18-76-1064

Spessore (mm)	Massa (kg/m ²)
0,50	4,61
0,63	5,81
0,75	6,92
0,88	8,12
1,00	9,22



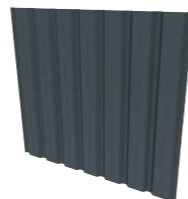
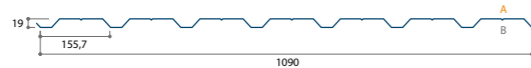
JID 19-105-1050

Spessore (mm)	Massa (kg/m ²)
0,50	4,67
0,63	5,89
0,75	7,01
0,88	8,22
1,00	9,35



JI 19-155-1090

Spessore (mm)	Massa (kg/m ²)
0,50	4,39
0,60	5,27
0,70	6,15



JID 27-111-1000

Spessore (mm)	Massa (kg/m ²)
0,50	4,91
0,63	6,18
0,75	7,36
0,88	8,64
1,00	9,81

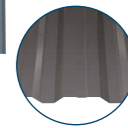
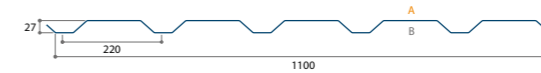


Profili a muro

Ordini a colori per ordini specificare!

JID 30-220-1100 Muro

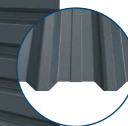
Spessore (mm)	Massa (kg/m ²)
0,50	4,46
0,63	5,62
0,75	6,69
0,88	7,85
1,00	8,92



Opzionale: con nervatura di rinforzo

JI 35-207-1035 Muro

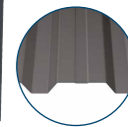
Spessore (mm)	Massa (kg/m ²)
0,50	4,63
0,63	5,83
0,75	6,94



Opzionale: con nervatura di rinforzo

JID 35-207-1035

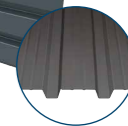
Spessore (mm)	Massa (kg/m ²)
0,50	4,74
0,63	5,97
0,75	7,11
0,88	8,34
1,00	9,48



Opzionale: con nervatura di rinforzo

JI 40-183-915 Muro

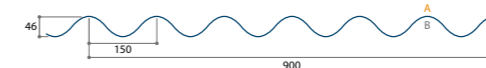
Spessore (mm)	Massa (kg/m ²)
0,50	5,23
0,60	6,28
0,70	7,33
0,88	9,21



Opzionale: con nervatura di rinforzo

JI 46-150-900 Muro

Spessore (mm)	Massa (kg/m ²)
0,70	7,45

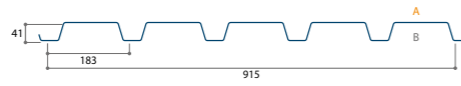


Profili a muro

Ordini a colori per ordini specificare!

JID 40-183-915 Muro

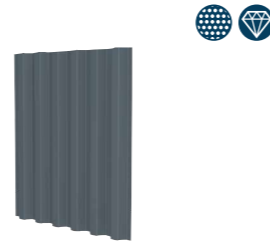
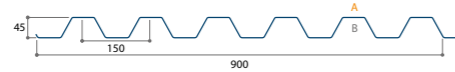
Spessore (mm)	Massa (kg/m ²)
0,50	5,36
0,63	6,76
0,75	8,04
0,88	9,44
1,00	10,72



Opzionale: con nervatura di rinforzo

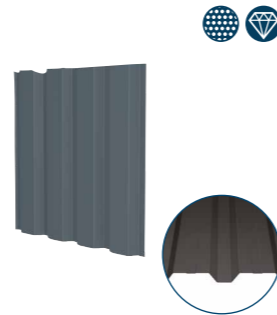
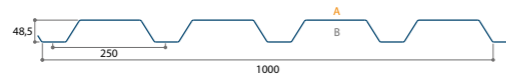
JID 45-150-900

Spessore (mm)	Massa (kg/m ²)
0,50	5,45
0,63	6,87
0,75	8,18
0,88	9,59
1,00	10,90



JID 50-250-1000

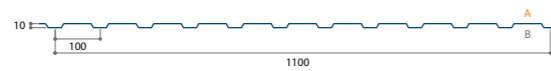
Spessore (mm)	Massa (kg/m ²)
0,50	4,91
0,63	6,18
0,75	7,36
0,88	8,64
1,00	9,81



Opzionale: con nervatura di rinforzo

JID 10-100-1100

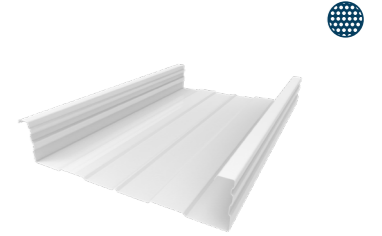
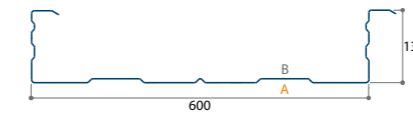
Spessore (mm)	Massa (kg/m ²)
0,60	5,22
0,70	6,09



Vassoi di supporto dell'isolamento a muro

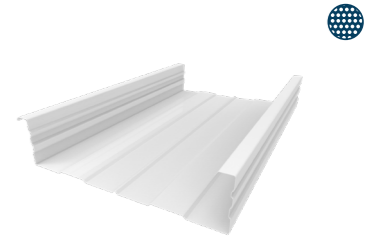
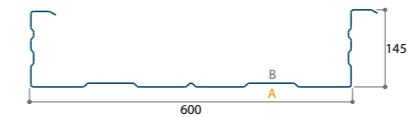
JID 130-600

Spessore (mm)	Massa (kg/m ²)
0,75	9,42
0,88	11,05
1,00	12,56
1,25	15,70
1,50	18,84



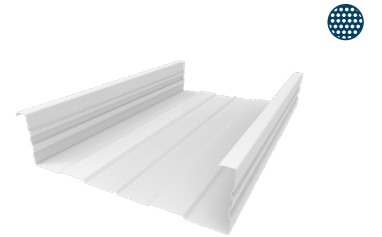
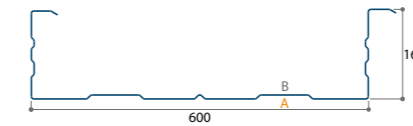
JID 145-600

Spessore (mm)	Massa (kg/m ²)
0,75	9,67
0,88	11,34
1,00	12,89
1,25	16,11
1,50	19,33



JID 160-600

Spessore (mm)	Massa (kg/m ²)
0,75	10,01
0,88	11,74
1,00	13,35
1,25	16,68
1,50	20,02



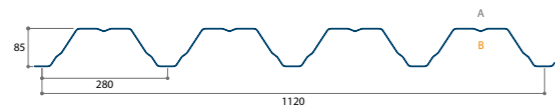
Profilo di supporto di tenuta

Ordini a colori per ordini specificare!

JID 85-280-1120



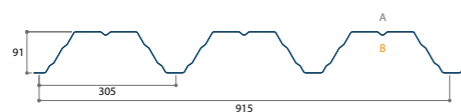
Spessore (mm)	Massa (kg/m ²)
0,75	7,89
0,88	9,25
1,00	10,51
1,13	11,88
1,25	13,14
1,50	15,77



JID 89-305-915



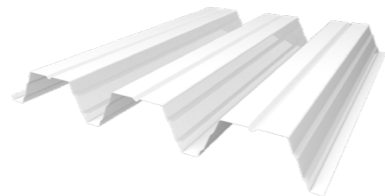
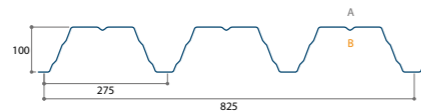
Spessore (mm)	Massa (kg/m ²)
0,75	8,04
0,88	9,44
1,00	10,72
1,13	12,12
1,25	13,41



JID 100-275-825



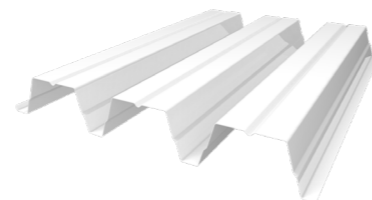
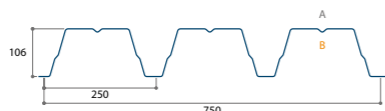
Spessore (mm)	Massa (kg/m ²)
0,75	8,92
0,88	10,47
1,00	11,89
1,13	13,44
1,25	14,87



JID 106-250-750



Spessore (mm)	Massa (kg/m ²)
0,75	9,81
0,88	11,51
1,00	13,08
1,13	14,78
1,25	16,35



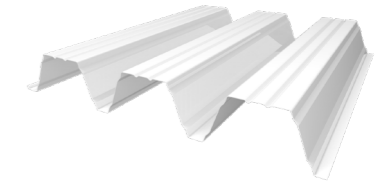
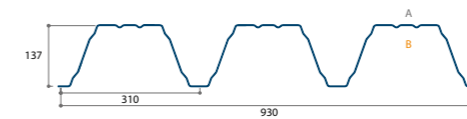
Profilo di supporto di tenuta

Ordini a colori per ordini specificare!

JID 137-310-930



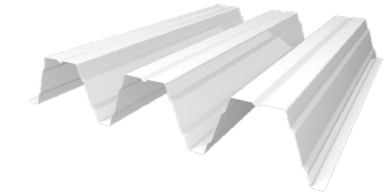
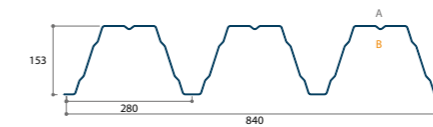
Spessore (mm)	Massa (kg/m ²)
0,75	9,50
0,88	11,14
1,00	12,66
1,13	14,31
1,25	15,83
1,50	18,99



JID 153-280-840



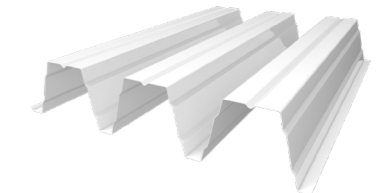
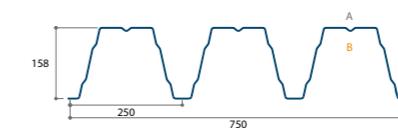
Spessore (mm)	Massa (kg/m ²)
0,75	10,51
0,88	12,34
1,00	14,02
1,13	15,84
1,25	17,52
1,50	21,03



JID 158-250-750



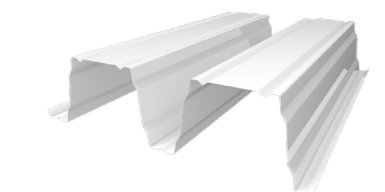
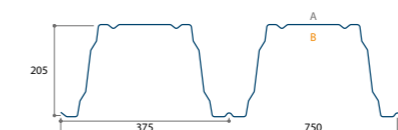
Spessore (mm)	Massa (kg/m ²)
0,75	11,78
0,88	13,82
1,00	15,70
1,13	17,74
1,25	19,63
1,50	23,55



JID 200-375-750



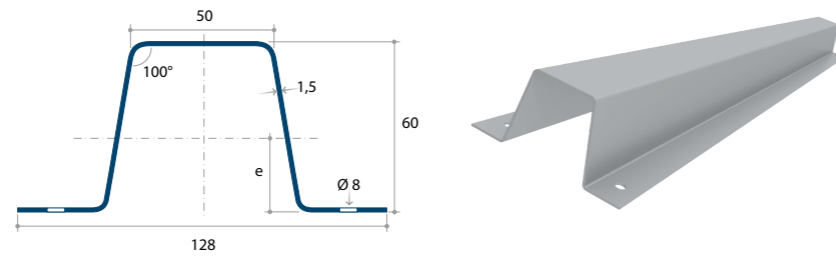
Spessore (mm)	Massa (kg/m ²)
0,75	11,78
0,88	13,82
1,00	15,70
1,13	17,74
1,25	19,63
1,50	23,55



Profili zincati

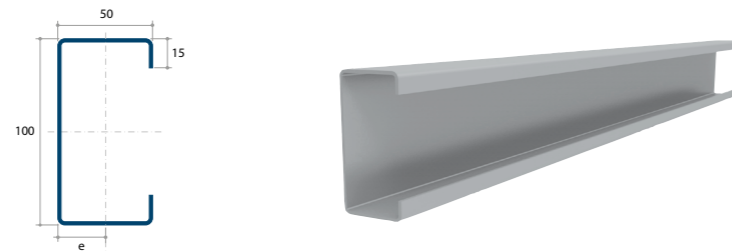
JI Omega 60

Spessore (mm)	Massa (kg/m ²)
1,50	2,60
2,00	3,45



JI C

Spessore (mm)	Massa (kg/m ²)
1,50	2,60
2,00	3,45
2,50	4,25



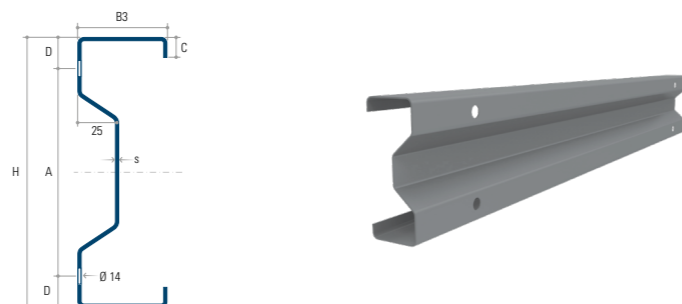
JI Z

Spessore (mm)	Massa (kg/m ²)								
	Z140	Z160	Z180	Z200	Z220	Z250	Z300	Z350	Z400
1,50	3,45	3,80	3,95	4,15	4,50	5,00	-	-	-
1,75	-	-	-	-	-	5,85	-	-	-
2,00	4,55	5,10	5,20	5,50	6,00	6,60	8,15	9,00	9,80
2,50	5,60	6,30	6,40	6,80	7,50	8,30	10,15	11,25	12,25
3,00	-	-	-	-	9,00	9,85	12,20	13,50	14,70
3,50	-	-	-	-	-	11,55	14,25	15,75	17,20
4,00	-	-	-	-	-	13,05	16,10	18,00	19,60



JI Sigma

Spessore (mm)	Massa (kg/m ²)				
	E140	E170	E200	E230	E260
1,50	3,50	3,85	4,20	4,50	5,35
2,00	4,60	5,10	5,50	6,00	7,05
2,50	5,75	6,30	6,80	7,50	8,75
3,00	-	-	-	-	10,40
3,50	-	-	-	-	12,00



Pannelli di lana di roccia, JI Vulcasteel Roof.



JI Roof PIR, pannelli per un edificio industriale.



Disegno di copertina in JI Permapan PIR.

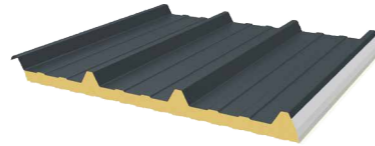
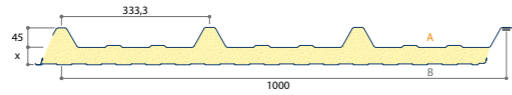


JI Eco PIR, pannelli ideali per l'edificio agricola.

Pannelli isolanti

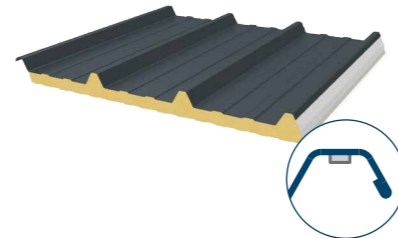
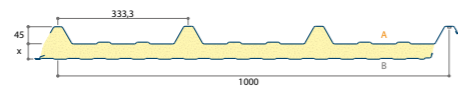
JI Roof PIR

Spessore (mm)	Massa (kg/m ²)	Valore U (W/m ² K)
30	10,38	0,65
40	10,76	0,50
60	11,52	0,34
80	12,28	0,25
100	13,04	0,20
120	13,78	0,17
150	14,94	0,14



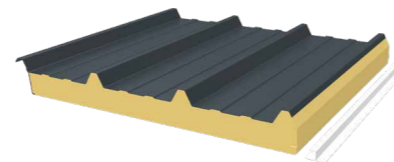
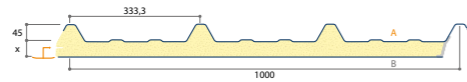
JID Roof PIR

Spessore (mm)	Massa (kg/m ²)	Valore U (W/m ² K)
30	10,38	0,68
40	10,76	0,52
60	11,52	0,36
80	12,28	0,25
100	13,04	0,20
120	13,78	0,17
150	14,94	0,14



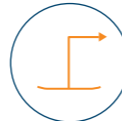
JI Roof Plus

Spessore (mm)	Massa (kg/m ²)	Valore U (W/m ² K)
40	8,26	0,50
60	9,02	0,34
80	9,78	0,26
100	10,54	0,21



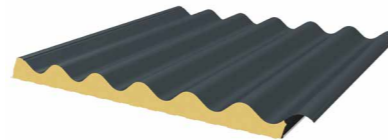
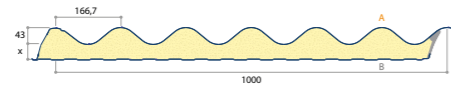
Lato inferiore in poliestere

Montaggio in logo



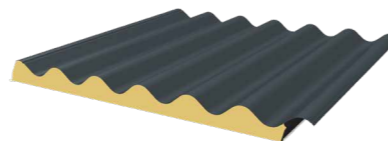
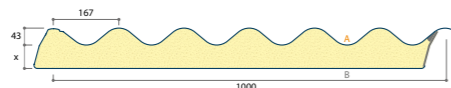
JI Onduroof PIR

Spessore (mm)	Massa (kg/m ²)	Valore U (W/m ² K)
40	11,11	0,39
60	11,86	0,29
80	12,62	0,23



JI Ondu Eco PIR

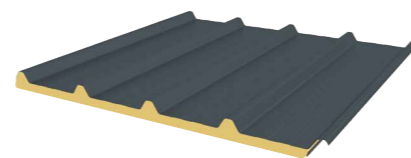
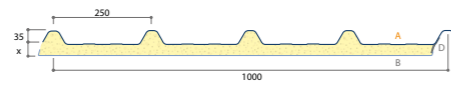
Spessore (mm)	Massa (kg/m ²)	Valore U (W/m ² K)
40	7,20	0,40
60	7,96	0,30
80	8,72	0,23
120	10,23	0,16



Lato inferiore in alluminio

JI Eco PIR 30-40

Spessore (mm)	Massa (kg/m ²)	Valore U (W/m ² K)
30	7,20	0,65
40	7,58	0,50



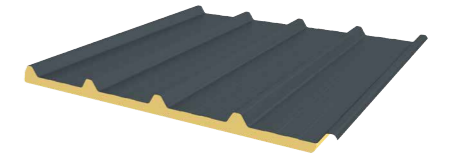
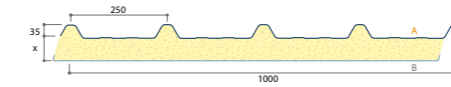
Lato inferiore in alluminio

D: striscia di tenuta

Pannelli isolanti

JI Eco PIR 60-100

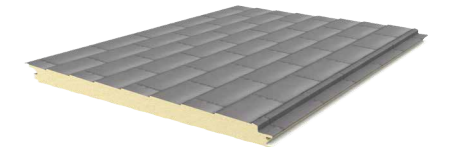
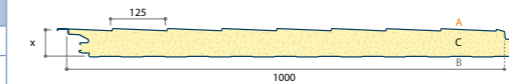
Spessore (mm)	Massa (kg/m ²)	Valore U (W/m ² K)
60	8,34	0,34
100	9,86	0,21



Lato inferiore in alluminio

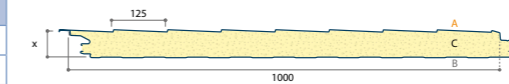
JI Slate 1000FN PIR

Spessore (mm)	Massa (kg/m ²)	Valore U (W/m ² K)
60	10,44	0,39
120	12,72	0,19



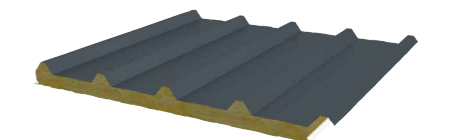
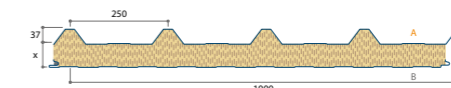
JI Sidings 1000FB PIR

Spessore (mm)	Massa (kg/m ²)	Valore U (W/m ² K)
60	10,44	0,39
120	12,72	0,19



JI Vulcasteel Roof

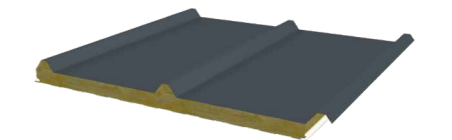
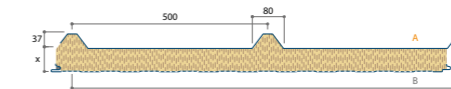
Spessore (mm)	Massa (kg/m ²)	Valore U (W/m ² K)
50	15,65	0,77
60	16,58	0,66
80	18,64	0,51
100	20,64	0,41
120	22,64	0,35
150	25,57	0,28
175	28,08	0,24
200	30,71	0,21



Lana di roccia

JI Vulcasteel Roof 37-500

Spessore (mm)	Massa (kg/m ²)	Valore U (W/m ² K)
50	15,16	0,80
60	16,16	0,68
80	18,16	0,52
100	20,15	0,42
120	22,15	0,35
150	25,17	0,29
175	27,69	0,25
200	30,14	0,22

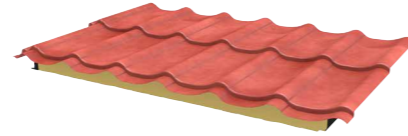
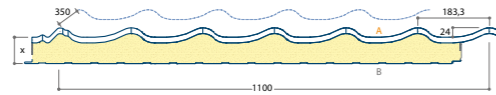


Lana di roccia

Pannelli isolanti

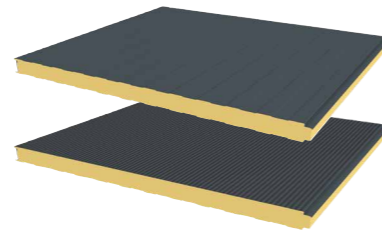
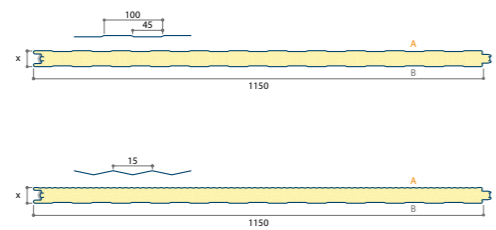
JI Permipan PIR

Spessore (mm)	Massa (kg/m ²)	Valore U (W/m ² K)
40	9,52	0,48
60	10,42	0,34
80	11,32	0,26
100	12,22	0,21



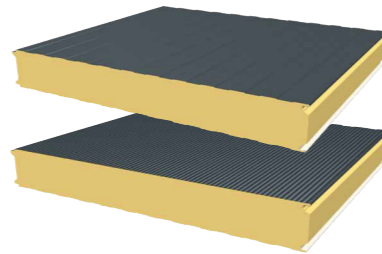
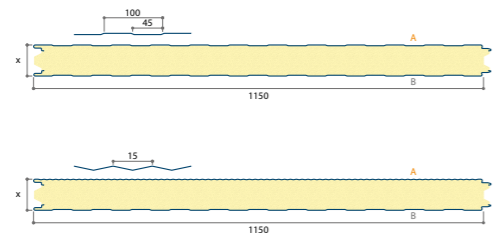
JI Wall PIR 40-60 (Lineari / Micro costine)

Spessore (mm)	Massa (kg/m ²)	Valore U (W/m ² K)
40	9,79	0,60
60	10,55	0,39



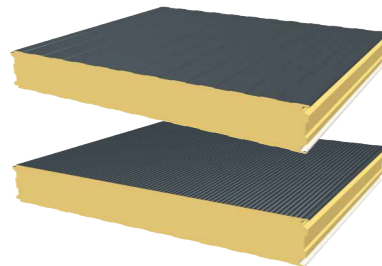
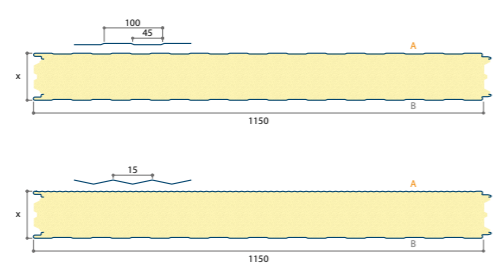
JI Wall PIR 80-100 (Lineari / Micro costine)

Spessore (mm)	Massa (kg/m ²)	Valore U (W/m ² K)
80	11,31	0,27
100	12,07	0,21



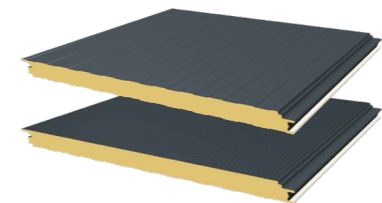
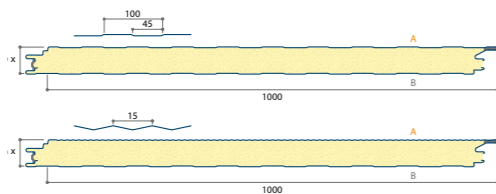
JI Wall PIR 120-150-170-200-220 (Lineari / Micro costine)

Spessore (mm)	Massa (kg/m ²)	Valore U (W/m ² K)
120	12,83	0,18
150	13,97	0,14
170	14,73	0,12
200	15,87	0,11
220	16,63	0,10



JI Wall 1000FN PIR (Lineari / Micro costine)

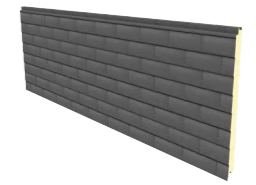
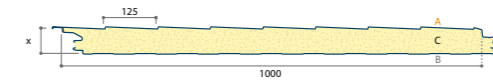
Spessore (mm)	Massa (kg/m ²)	Valore U (W/m ² K)
60	11,03	0,41
80	11,79	0,27
100	12,55	0,21
120	13,31	0,18
150	14,45	0,14



Pannelli isolanti

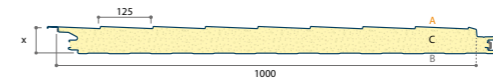
JI Slate 1000FN PIR

Spessore (mm)	Massa (kg/m ²)	Valore U (W/m ² K)
60	10,44	0,39
120	12,72	0,19



JI Sidings 1000FN PIR

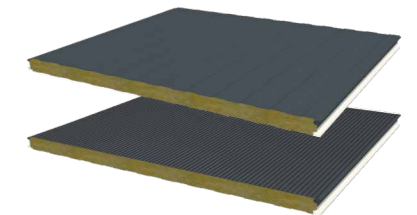
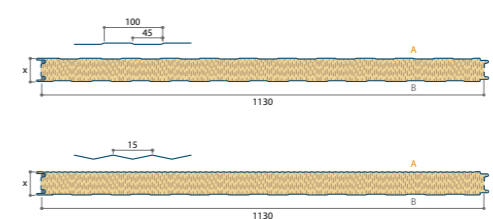
Spessore (mm)	Massa (kg/m ²)	Valore U (W/m ² K)
60	10,44	0,39
120	12,72	0,19



JI Vulcasteel Wall (Lineari / Micro costine)

Lana di roccia 

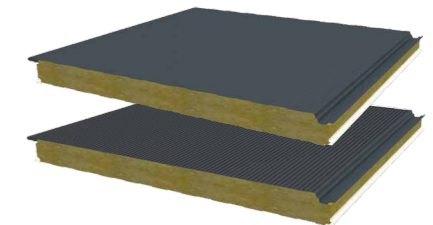
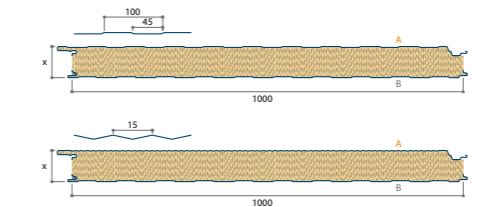
Spessore (mm)	Massa (kg/m ²)	Valore U (W/m ² K)
50	14,15	0,82
60	15,15	0,71
80	17,14	0,53
100	19,14	0,43
120	21,14	0,36
150	24,13	0,29
175	26,63	0,25
200	29,13	0,21



JI Vulcasteel Wall 1000VB (Leicht Liniert / Micro Liniert)

Lana di roccia 

Spessore (mm)	Massa (kg/m ²)	Valore U (W/m ² K)
50	15,71	0,86
60	16,71	0,71
80	18,71	0,54
100	20,71	0,43
120	22,70	0,36
150	25,70	0,29
175	28,20	0,25
200	30,70	0,21



Accessori traslucidi

Pannelli luminosi (parete e tetto)

Poliestere singolo

Riferimento	Lunghezza disponibile (m)*
Jl Poliестere Traslucido - 18-076-988	2,00
Jl Poliестere Traslucido - 25-267-1070	6,00
Jl Poliестere Traslucido - 33-250-1000	6,00
Jl Poliестere Traslucido - 33-250-1000	7,60
Jl Poliестere Traslucido - 35-207-1035	6,00
Jl Poliестere Traslucido - 45-333-1000	6,00
Jl Poliестere Traslucido - 45-333-1000	7,60

*in Belgio

Jl Poliестere Traslucido - 18-076-988
 Jl Poliестere Traslucido - 25-267-1070
 Jl Poliестere Traslucido - 33-250-1000
 Jl Poliестere Traslucido - 35-207-1035
 Jl Poliестere Traslucido - 45-333-1000



Riferimento	Lunghezza disponibile (m)
Jl Poliестere Traslucido - Greca	6,00
Jl Poliестere Traslucido - Greca	7,60

poliестere, spessore 1 mm

Jl Poliестere Traslucido - Greca



Policarbonato singolo

Riferimento	Lunghezza disponibile (m)
Jl Policarb Traslucido - 1 mm - 37-250-1000	personalizzato
Jl Policarb Traslucido - 1 mm - 33-250-1000	personalizzato
Jl Policarb Traslucido - 1 mm - 45-333-1000	personalizzato

poliестonato, spessore 1 mm - in Belgio (Isometal)

Jl Policarb Traslucido - 1 mm - 37-250-1000
 Jl Policarb Traslucido - 1 mm - 33-250-1000
 Jl Policarb Traslucido - 1 mm - 37-250-1000



Riferimento	Lunghezza disponibile (m)
Jl Policarb Traslucido - 2,5 mm - 33-250-1000	6,00
Jl Policarb Traslucido - 2,5 mm - 33-250-1000	7,60
Jl Policarb Traslucido - 2,5 mm - 35-207-1035	6,00
Jl Policarb Traslucido - 2,5 mm - 45-333-1000	6,00
Jl Policarb Traslucido - 2,5 mm - 45-333-1000	7,60

poliестonato, spessore 2,5 mm - in Belgio (Joris Ide NV/SA)

Jl Policarb Traslucido - 2,5 mm - 33-250-1000
 Jl Policarb Traslucido - 2,5 mm - 35-207-1035
 Jl Policarb Traslucido - 2,5 mm - 45-333-1000

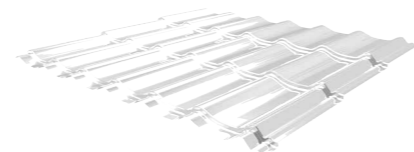


Profilo per tegola traslucido in policarbonato

Riferimento	Lunghezza standard (m)
Jl Policarb Traslucido - 1 mm - 24-183-1100 Panel-tile	1230 mm

poliестonato, spessore 1 mm

Jl Policarb Traslucido - 1 mm - 24-183-1100 Panel-tile



Accessori traslucidi

Policarbonato

Policarbonato estruso copertura

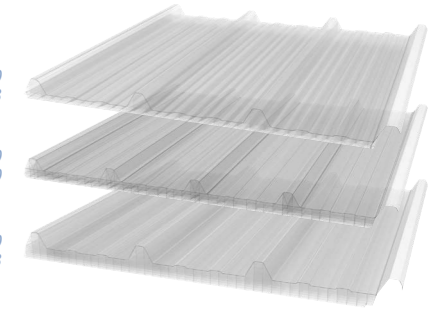
Riferimento	Lunghezza disponibile (m)*
Jl Thermoroof 20 Policarb 45-333	2,60 ~ 13,60
Jl Thermoroof 30 Policarb 33-250	2,60 ~ 13,60
Jl Thermoroof 40 Policarb 45-333	2,60 ~ 13,60

*distanza ogni 500 mm

Jl Thermoroof 20 Policarb 45-333

Jl Thermoroof 30 Policarb 33-250

Jl Thermoroof 40 Policarb 45-333



Jl Thermoroof 40 Policarb 45-333



Jl Wall 1000FN PIR (Micro costine)



Jl 25-180-1085



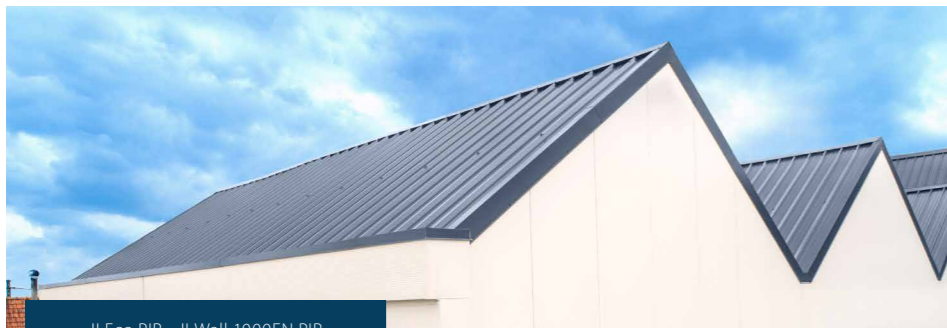
Jl Vulcasteel Roof



Fissaggi angolari.



Jl Vieo Edge 500



Jl Eco PIR - Jl Wall 1000FN PIR



Jl Wall 1000FN PIR



Jl Vieo Edge 500



Jl 45-333-1000 Copertura



JORISIDE

THE STEEL FUTURE

Joris Ide Auvergne-Sud Est

Z.I. Les Bonnes
43410 Lempdes sur Allagnon, Francia
☎ +33 (0)4 71 74 61 00
✉ jjauvergne@jorisode.fr

61 Route de Camsaud
84700 Sorgues, Francia
☎ +33 (0)4 90 39 94 95

Joris Ide Deutschland GmbH

Nikolaus-Otto-Strasse 6
91522 Ansbach-Brodswinden, Deutschland
☎ +49 (0)981 188 929-00
☎ +49 (0)981 188 929-99
✉ info@jorisode.de

Zweigniederlassung Hildesheim

Daimlerring 7
31135 Hildesheim, Deutschland
☎ +49 (0)322 122 467-00
✉ info@jorisode.de

Joris Ide nv/sa

Hille 174,
8750 Zwevezele, Belgien
☎ +32 (0)51 61 07 77
☎ +32 (0)51 61 07 79
✉ info@jorisode.be



With more than 30 years of experience, Joris Ide represents a guarantee of quality in the construction market. We bring solutions to all your problems: acoustic, aesthetic, fire, thermal. Joris Ide, the essential partner for all your projects.



JORIS IDE IS
PLANET
PASSIONATE

