

PANORAMICA DEL PRODOTTO

Italia

MR018 / 0320



JORISIDE
THE STEEL FUTURE



Index

Profili di copertura	2
Profili a muro	6
Vassoi di supporto dell' isolamento a muro	9
Profilo di supporto di tenuta	10
Profili zincati	12
Pannelli isolanti	14
Accessori traslucidi	18



Die AG Joris Ide haftet nicht für eventuelle Druckfehler und/oder eventuelle Abweichungen zwischen den Abbildungen in diesem Katalog und dem tatsächlich gelieferten Produkt. Die AG Joris Ide behält sich das Recht vor, die technischen Eigenschaften ohne vorherige Ankündigung zu ändern.

Panoramica del prodotto

Italia

Con più di 30 anni esperienza, il gruppo Joris Ide rappresenta oggi un impegno qualità con le parti interessate mercato delle costruzioni. Forniamo soluzioni costruzione e ristrutturazione progetti di grande diversità di clienti attraverso uno le gamme più ampie di mercato con i nostri pannelli sandwich, prodotti per coperture, facciata, vassoi, supporti di tenuta, pavimenti, arcarecci e travi, pieghevole e accessori ... La nostra gamma di prodotti può soddisfare tutte le esigenze e tipi di problemi: acustica, estetico, fuoco, termico. Le applicazioni sono agricole, industriale, residenziale, terziario. Grazie alla sua flessibilità, è ampia gamma di prodotti, la sua organizzazione esperto, è Joris Ide oggi il partner essenziale di tutti i tuoi progetti.

Opzioni disponibili:

Antigoccia



Taglio antigoccia



Perforazione



Liscio, curvo



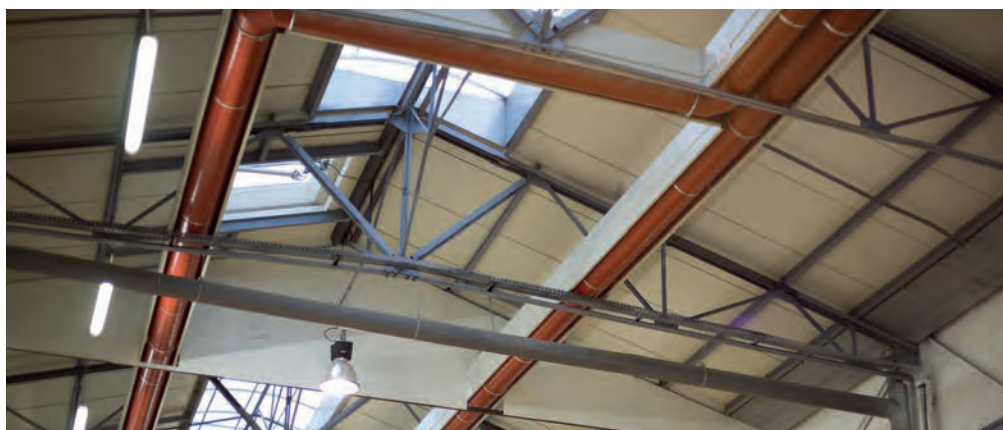
Acciaio inossidabile
(materiale su richiesta)



Ordini a colori per ordini specificare!



Jl 45-333-1000



Jl Roof PIR



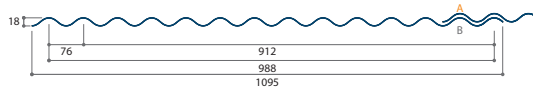
Jl Permapan PIR

Profili di copertura

Ordini a colori per ordini specificare!

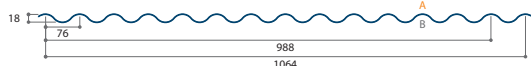
JI 18-076-988

Spessore (mm)	Massa (kg/m ²)
0,50	4,79
0,60	5,82
0,70	6,79



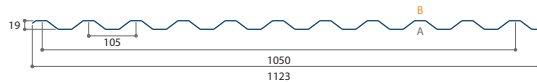
JID 18-76-1064

Spessore (mm)	Massa (kg/m ²)
0,50	4,62
0,63	5,81
0,75	6,92
0,88	8,12
1,00	9,22
1,25	11,53



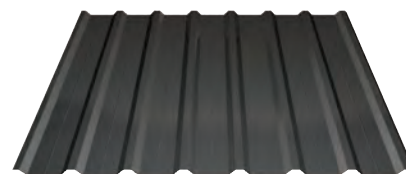
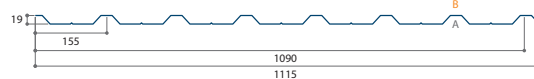
JID 19-105-1050

Spessore (mm)	Massa (kg/m ²)
0,50	4,79
0,63	5,89
0,75	7,01
0,88	8,22
1,00	9,35
1,25	11,68



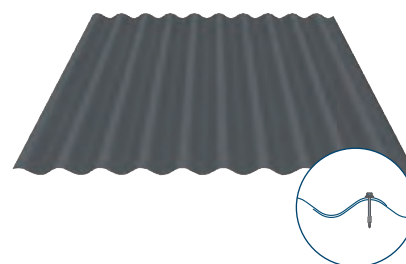
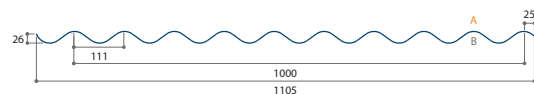
JI 19-155-1090

Spessore (mm)	Massa (kg/m ²)
0,50	4,39
0,60	5,27
0,70	6,15



JID 27-111-1000

Spessore (mm)	Massa (kg/m ²)
0,50	4,91
0,63	6,18
0,75	7,36
0,88	8,64
1,00	9,81
1,25	12,27



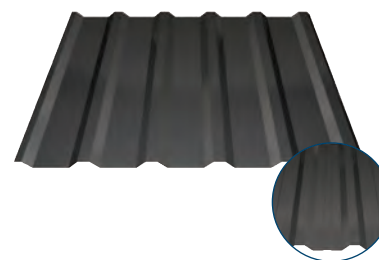
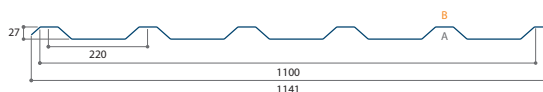
Profili di copertura

Ordini a colori per ordini specificare!

JID 30-220-1100



Spessore (mm)	Massa (kg/m ²)
0,50	4,46
0,63	5,62
0,75	6,69
0,88	7,85
1,00	8,92
1,25	11,15

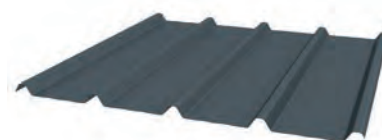
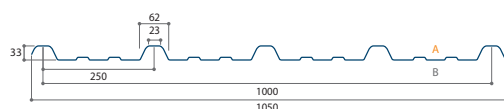


Opzionale: con nervatura di rinforzo

JI 33-250-1000 Copertura



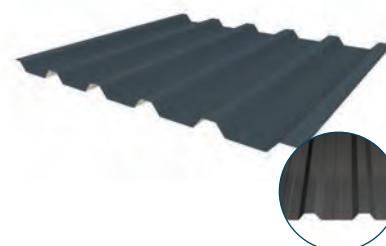
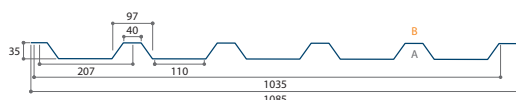
Spessore (mm)	Massa (kg/m ²)
0,50	4,79
0,60	5,75
0,63	6,03
0,70	6,70
0,75	7,18



JI 35-207-1035 Copertura



Spessore (mm)	Massa (kg/m ²)
0,50	4,63
0,60	5,55
0,63	5,83
0,70	6,48
0,75	6,94

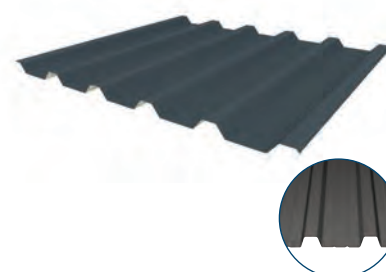
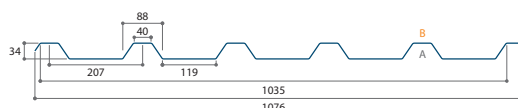


Opzionale: con nervatura di rinforzo

JID 35-207-1035



Spessore (mm)	Massa (kg/m ²)
0,63	5,97
0,75	7,11
0,88	8,34
1,00	9,48

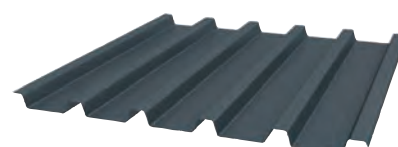
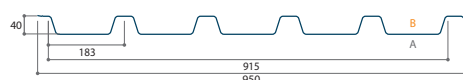


Opzionale: con nervatura di rinforzo

JI 40-183-915 Copertura



Spessore (mm)	Massa (kg/m ²)
0,50	5,23
0,60	6,28
0,75	7,33



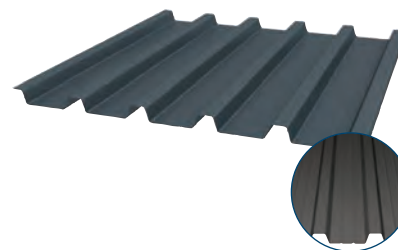
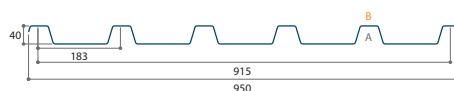
Profili di copertura

Ordini a colori per ordini specificare!

JID 40-183-915



Spessore (mm)	Massa (kg/m ²)
0,50	5,36
0,63	6,76
0,75	8,04
0,88	9,44
1,00	10,72
1,25	13,41

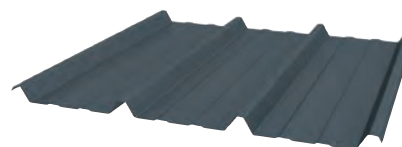
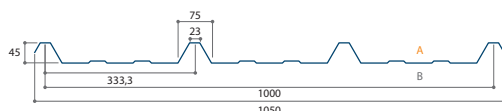


Opzionale: con nervatura di rinforzo

JI 45-333-1000 Copertura



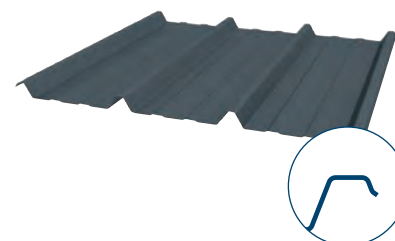
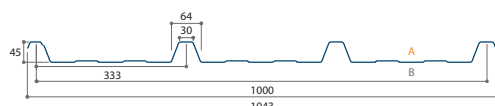
Spessore (mm)	Massa (kg/m ²)
0,50	4,79
0,60	5,75
0,63	6,03
0,70	6,70
0,75	7,18



JID 45-333-1000



Spessore (mm)	Massa (kg/m ²)
0,50	4,91
0,63	6,18
0,75	7,36
0,88	8,64
1,00	9,81
1,25	12,27

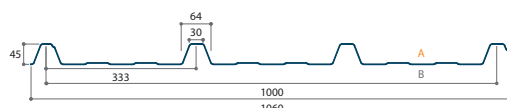


Con piede allargato

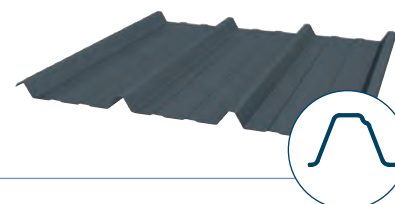
JID 45-333-1000 con gamba di supporto



Spessore (mm)	Massa (kg/m ²)
0,75	7,48

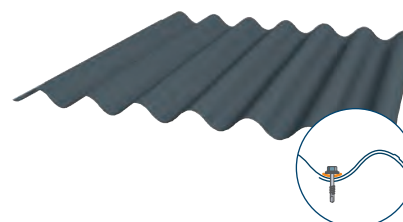
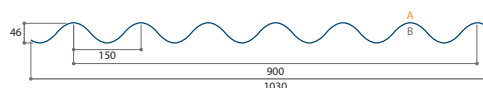


Con gamba di supporto



JI 46-150-900 Copertura

Spessore (mm)	Massa (kg/m ²)
0,70	7,45
0,75	7,98

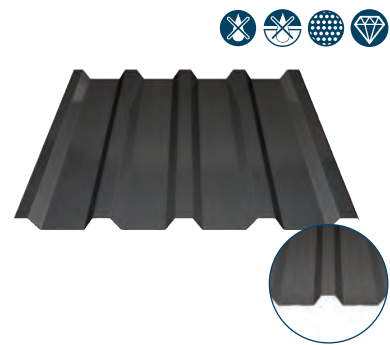
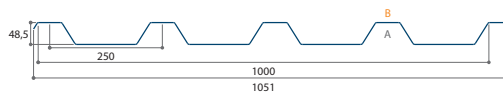


Profili di copertura

Ordini a colori per ordini specificare!

JID 50-250-1000

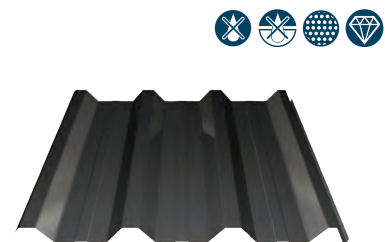
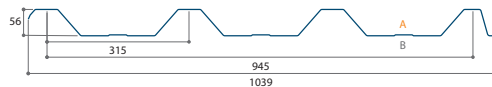
Spessore (mm)	Massa (kg/m ²)
0,50	4,91
0,63	6,18
0,75	7,36
0,88	8,64
1,00	9,81
1,25	12,27



Opzionale: con nervatura di rinforzo

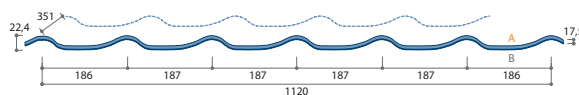
JID 56-317-945

Spessore (mm)	Massa (kg/m ²)
0,50	5,19
0,63	6,54
0,75	7,79
0,88	9,14
1,00	10,38
1,25	12,98



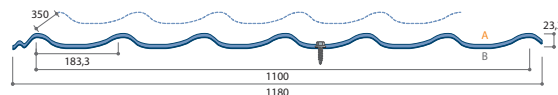
JID 22-187-1120 Panel-tile

Spessore (mm)	Massa (kg/m ²)
0,75	



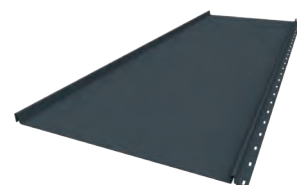
JI 24-183-1100 Panel-tile

Spessore (mm)	Massa (kg/m ²)
0,50	5,00



JI Vieo Edge 500

Spessore (mm)	Massa (kg/m ²)
0,63	5,94

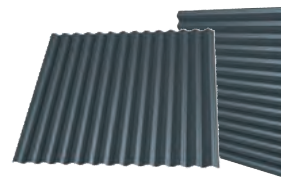
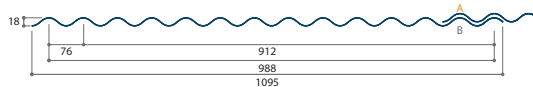


Profili a muro

Ordini a colori per ordini specificare!

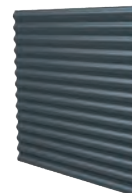
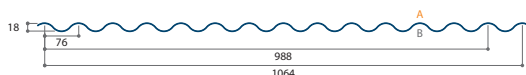
JI 18-076-988

Spessore (mm)	Massa (kg/m ²)
0,50	4,97
0,60	5,82
0,70	6,79



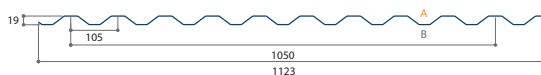
JID 18-76-1064

Spessore (mm)	Massa (kg/m ²)
0,50	4,62
0,63	5,81
0,75	6,92
0,88	8,12
1,00	9,22



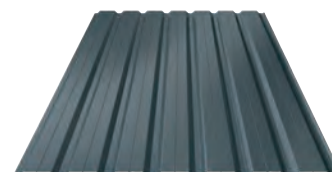
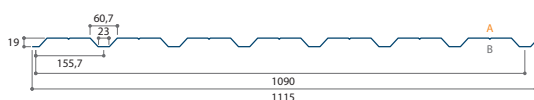
JID 19-105-1050

Spessore (mm)	Massa (kg/m ²)
0,50	4,67
0,63	5,89
0,75	7,01
0,88	8,22
1,00	9,35



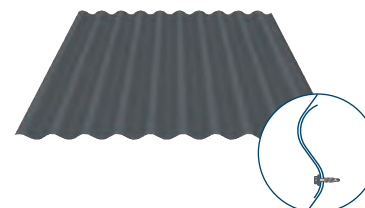
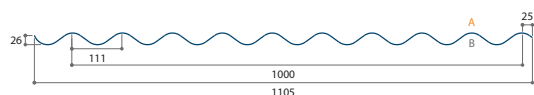
JI 19-155-1090

Spessore (mm)	Massa (kg/m ²)
0,50	4,39
0,60	5,27
0,70	6,15



JID 27-111-1000

Spessore (mm)	Massa (kg/m ²)
0,50	4,91
0,63	6,18
0,75	7,36
0,88	8,64
1,00	9,81



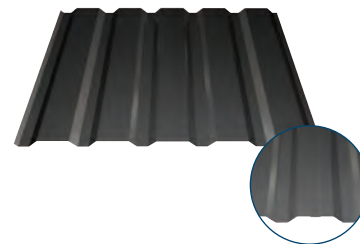
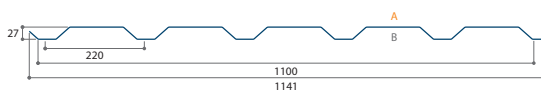
Profili a muro

Ordini a colori per ordini specificare!

JID 30-220-1100



Spessore (mm)	Massa (kg/m ²)
0,50	4,46
0,63	5,62
0,75	6,69
0,88	7,85
1,00	8,92

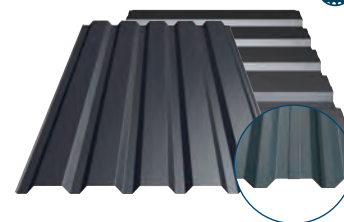
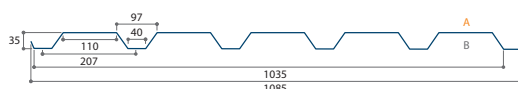


Opzionale: con nervatura di rinforzo

JI 35-207-1035 Muro



Spessore (mm)	Massa (kg/m ²)
0,50	4,63
0,60	5,55
0,63	5,83
0,70	6,48
0,75	6,94

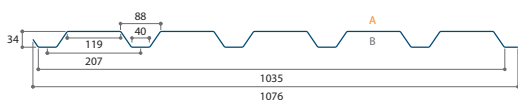


Opzionale: con nervatura di rinforzo

JID 35-207-1035



Spessore (mm)	Massa (kg/m ²)
0,50	4,74
0,63	5,97
0,75	7,11
0,88	8,34
1,00	9,48

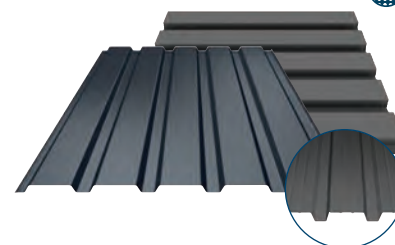
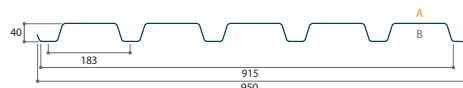


Opzionale: con nervatura di rinforzo

JI 40-183-915 Muro



Spessore (mm)	Massa (kg/m ²)
0,50	5,23
0,60	6,28
0,70	7,33
0,88	9,21

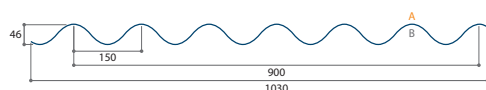


Opzionale: con nervatura di rinforzo

JI 46-150-900 Muro



Spessore (mm)	Massa (kg/m ²)
0,70	7,45
0,75	7,98

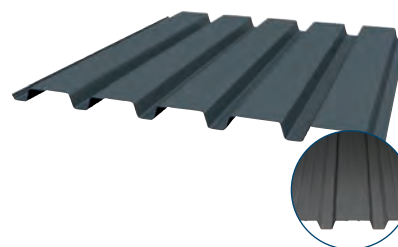
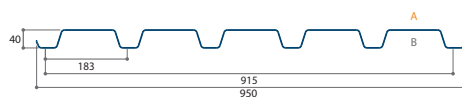


Profili a muro

Ordini a colori per ordini specificare!

JID 40-183-915

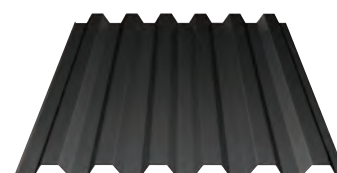
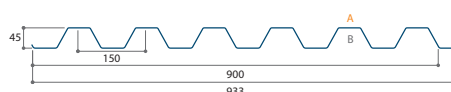
Spessore (mm)	Massa (kg/m ²)
0,50	5,36
0,63	6,76
0,75	8,04
0,88	9,44
1,00	10,72



Opzionale: con nervatura di rinforzo

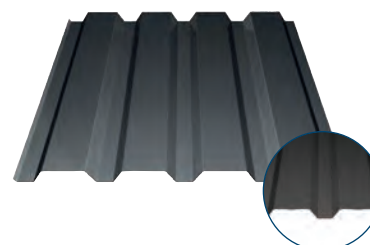
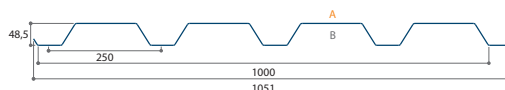
JID 45-150-900

Spessore (mm)	Massa (kg/m ²)
0,50	5,45
0,63	6,90
0,75	8,30
0,88	9,70
1,00	11,00



JID 50-250-1000

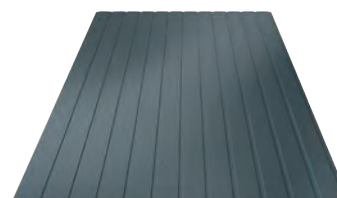
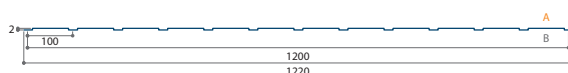
Spessore (mm)	Massa (kg/m ²)
0,50	4,91
0,63	6,18
0,75	7,36
0,88	8,64
1,00	9,81



Opzionale: con nervatura di rinforzo

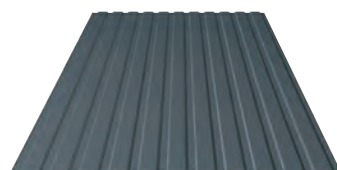
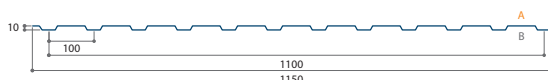
JI Profilo di rivestimento esterno

Spessore (mm)	Massa (kg/m ²)
0,50	3,93
0,60	4,71



JI 10-100-1100

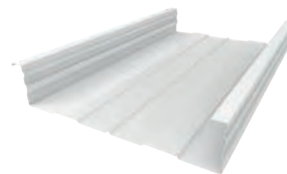
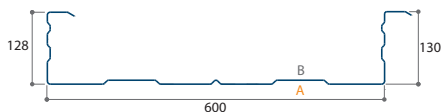
Spessore (mm)	Massa (kg/m ²)
0,50	4,35
0,60	5,22
0,70	6,09



Vassoi di supporto dell' isolamento a muro

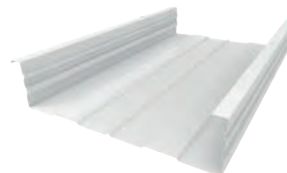
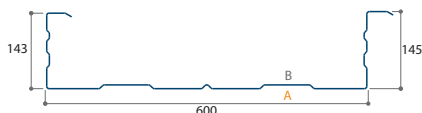
JID 130-600

Spessore (mm)	Massa (kg/m ²)
0,75	9,37
0,88	11,00
1,00	12,49
1,13	14,12
1,25	15,62
1,50	18,74



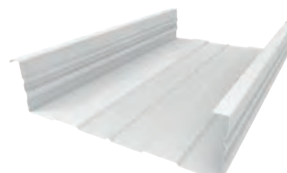
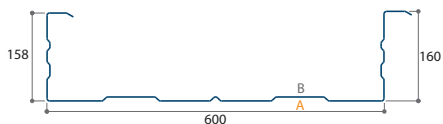
JID 145-600

Spessore (mm)	Massa (kg/m ²)
0,75	9,62
0,88	11,28
1,00	12,82
1,13	14,49
1,25	16,03
1,50	19,23



JID 160-600

Spessore (mm)	Massa (kg/m ²)
0,75	9,91
0,88	11,63
1,00	13,21
1,13	14,93
1,25	16,52
1,50	19,82



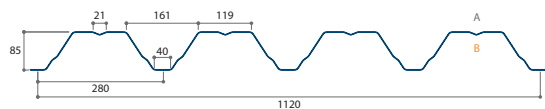
Profilo di supporto di tenuta

Ordini a colori per ordini specificare!

JID 85-280-1120



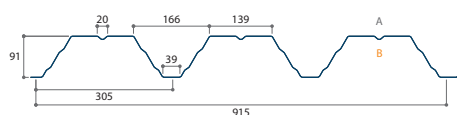
Spessore (mm)	Massa (kg/m ²)
0,75	7,89
0,88	9,25
1,00	10,51
1,13	11,88
1,25	13,14
1,50	15,77



JID 89-305-915



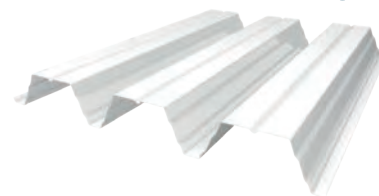
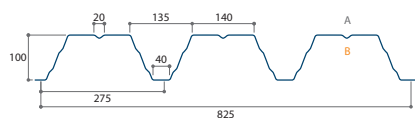
Spessore (mm)	Massa (kg/m ²)
0,75	8,04
0,88	9,44
1,00	10,72
1,13	12,12
1,25	13,41
1,50	16,09



JID 100-275-825



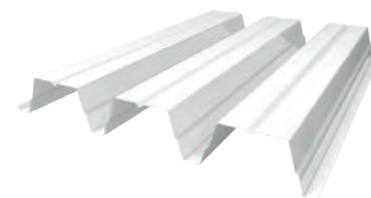
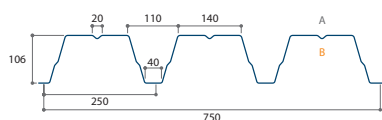
Spessore (mm)	Massa (kg/m ²)
0,75	8,92
0,88	10,47
1,00	11,89
1,13	13,44
1,25	14,87
1,50	17,84



JID 106-250-750



Spessore (mm)	Massa (kg/m ²)
0,75	9,81
0,88	11,51
1,00	13,08
1,13	14,78
1,25	16,35
1,50	19,63



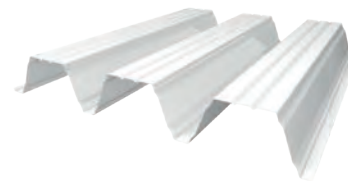
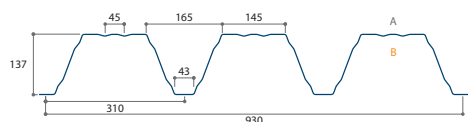
Profilo di supporto di tenuta

Ordini a colori per ordini specificare!

JID 137-310-930



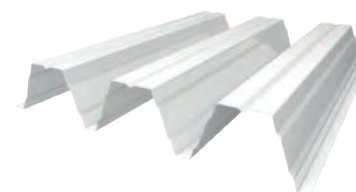
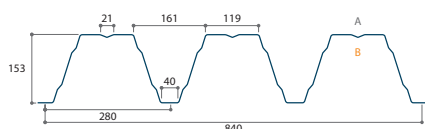
Spessore (mm)	Massa (kg/m ²)
0,75	9,50
0,88	11,14
1,00	12,66
1,13	14,31
1,25	15,83
1,50	18,99



JID 153-280-840



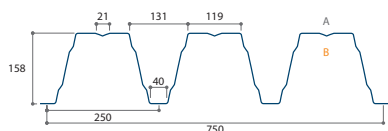
Spessore (mm)	Massa (kg/m ²)
0,75	10,51
0,88	12,34
1,00	14,02
1,13	15,84
1,25	17,52
1,50	21,03



JID 158-250-750



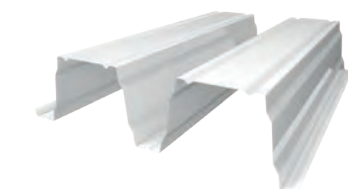
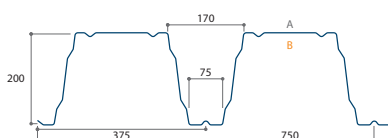
Spessore (mm)	Massa (kg/m ²)
0,75	11,78
0,88	13,82
1,00	15,70
1,13	17,74
1,25	19,63
1,50	23,55



JID 200-375-750



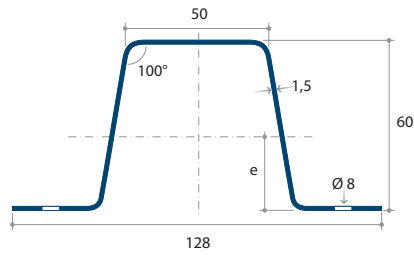
Spessore (mm)	Massa (kg/m ²)
0,75	11,78
0,88	13,82
1,00	15,70
1,13	17,74
1,25	19,63
1,50	23,55



Profili zincati

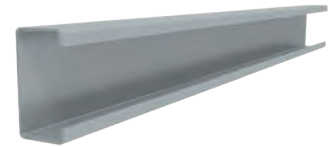
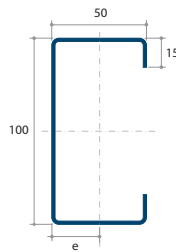
JI Omega 60

Spessore (mm)	Massa (kg/m ²)
1,50	2,60
2,00	3,45



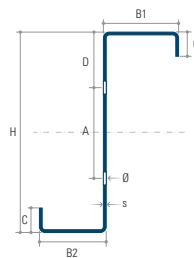
JI C

Spessore (mm)	Massa (kg/m ²)
1,50	2,60
2,00	3,45
2,50	4,25



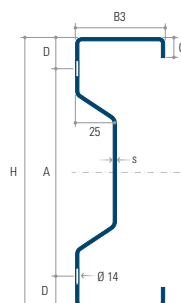
JI Z

Spessore (mm)	Massa (kg/m ²)								
	Z140	Z160	Z180	Z200	Z220	Z250	Z300	Z350	Z400
1,50	3,50	3,80	4,00	4,20	4,50	5,10	-	-	-
1,75	-	-	-	-	-	5,85	-	-	-
2,00	4,55	5,00	5,20	5,50	6,00	6,60	8,15	8,95	9,90
2,50	5,65	6,30	6,40	6,80	7,50	8,40	10,15	11,20	12,50
3,00	-	-	-	-	9,00	9,85	12,20	13,40	14,80
3,50	-	-	-	-	-	11,00	14,20	15,60	17,30



JI Sigma

Spessore (mm)	Massa (kg/m ²)			
	Σ140	Σ170	Σ200	Σ230
1,50	3,50	3,80	4,20	4,50
2,00	4,55	5,10	5,50	6,00
2,50	5,65	6,30	6,80	7,50





Pannelli di lana di roccia, JI Vulcasteel Roof.



JI Roof PIR, pannelli per un edificio industriale.



Disegno di copertina in JI Permapan PIR.

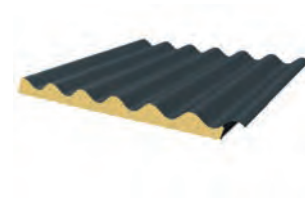
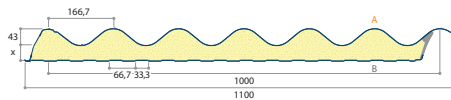


JI Eco PIR, pannelli ideali per l'edificio agricolo.

Pannelli isolanti

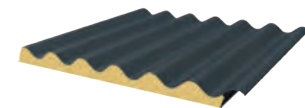
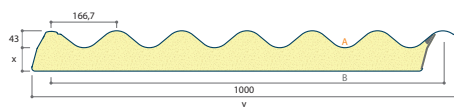
JI Onduroof PIR

Spessore (mm)	Massa (kg/m ²)	Valore U (W/m ² K)
40	12,51	0,42
60	13,30	0,30
80	14,10	0,24



JI Ondu Eco PIR

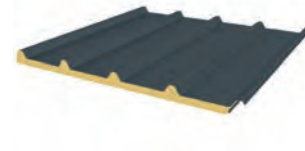
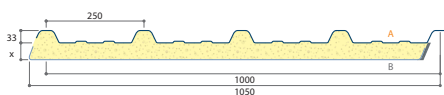
Spessore (mm)	Massa (kg/m ²)	Valore U (W/m ² K)
40	9,51	0,39
60	10,30	0,28
80	11,10	0,22
120	15,69	0,16



Lato inferiore in alluminio

JI Eco PIR

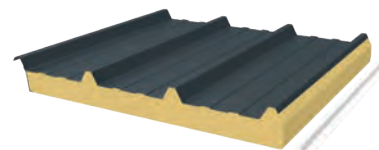
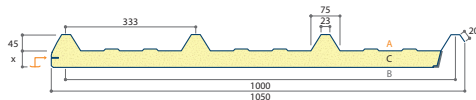
Spessore (mm)	Massa (kg/m ²)	Valore U (W/m ² K)
30	7,15	0,67
40	7,54	0,52
60	8,34	0,35
100	10,23	0,22



Lato inferiore in alluminio

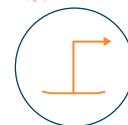
JI Roof Plus

Spessore (mm)	Massa (kg/m ²)	Valore U (W/m ² K)
40	8,49	0,52
60	9,29	0,36
80	10,09	0,28
100	10,89	0,22



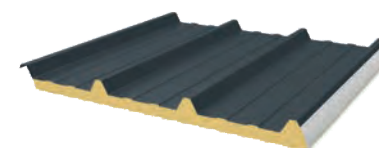
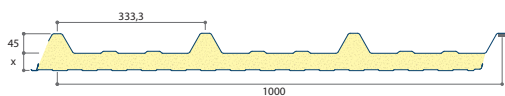
Lato inferiore in poliestere

Montaggio in logo



JI Roof PIR

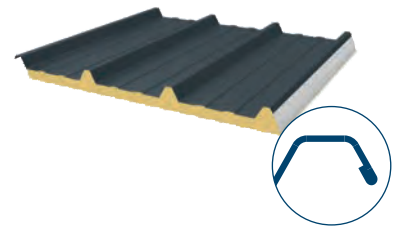
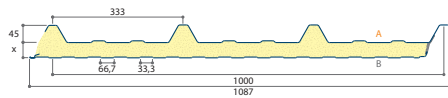
Spessore (mm)	Massa (kg/m ²)	Valore U (W/m ² K)
30	11,01	0,67
40	11,71	0,51
60	12,51	0,35
80	13,30	0,27
100	14,10	0,22
120	14,68	0,18
150	16,09	0,15



Pannelli isolanti

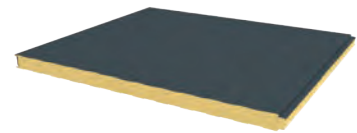
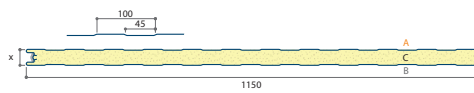
JID Roof PIR

Spessore (mm)	Massa (kg/m ²)	Valore U (W/m ² K)
40	11,71	0,51
60	12,51	0,35
80	13,30	0,27
100	14,10	0,22
120	14,68	0,18
150	16,09	0,15



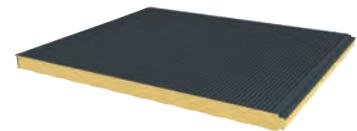
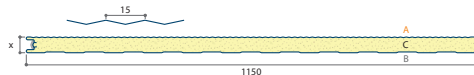
JI Wall PIR (Lineari)

Spessore (mm)	Massa (kg/m ²)	Valore U (W/m ² K)
40	10,78	0,58
60	11,70	0,38
80	12,14	0,28
100	12,93	0,23
120	13,74	0,19
150	14,94	0,15
170	15,74	0,13
200	16,94	0,11
220	17,74	0,10



JI Wall PIR (Micro costine)

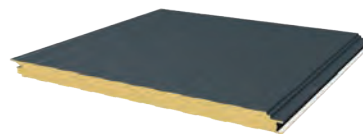
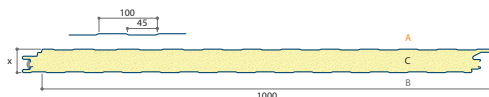
Spessore (mm)	Massa (kg/m ²)	Valore U (W/m ² K)
40	10,78	0,58
60	11,70	0,38
80	12,14	0,28
100	12,93	0,23
120	13,74	0,19
150	14,94	0,15
170	15,74	0,13
200	16,94	0,11
220	17,74	0,10



Pannelli isolanti

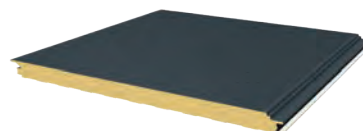
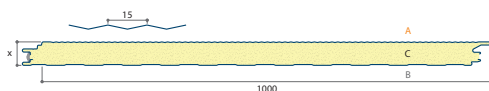
JI Wall 1000FN PIR (Lineari)

Spessore (mm)	Massa (kg/m ²)	Valore U (W/m ² K)
60	11,79	0,39
80	12,59	0,29
100	13,99	0,23
120	14,19	0,19
150	15,00	0,15



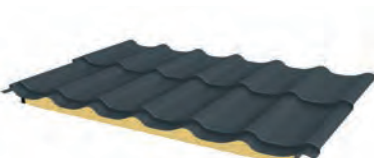
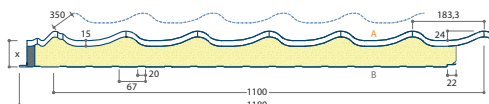
JI Wall 1000FN PIR (Micro costine)

Spessore (mm)	Massa (kg/m ²)	Valore U (W/m ² K)
60	11,79	0,39
80	12,59	0,29
100	13,99	0,23
120	14,19	0,19
150	15,00	0,15



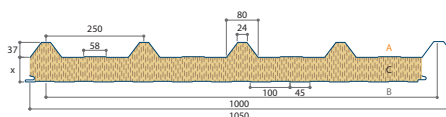
JI Permipan PIR

Spessore (mm)	Massa (kg/m ²)	Valore U (W/m ² K)
40	11,92	0,48
60	12,72	0,34
80	13,52	0,26
100	14,37	0,21



JI Vulcasteel Roof

Spessore (mm)	Massa (kg/m ²)	Valore U (W/m ² K)
50	15,50	0,76
60	16,00	0,65
80	18,00	0,50
100	20,00	0,41
120	22,00	0,34
150	25,00	0,28
175	27,50	0,24
200	30,00	0,21



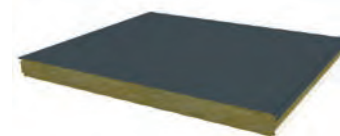
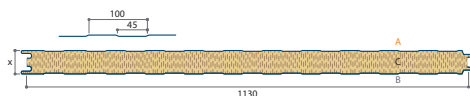
Lana di roccia

Pannelli isolanti

JI Vulcasteel Wall (Lineari)

Lana di roccia 

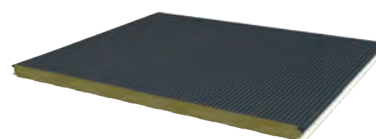
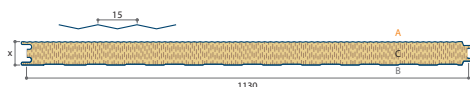
Spessore (mm)	Massa (kg/m ²)	Valore U (W/m ² K)
50	15,30	0,81
60	16,30	0,70
80	18,30	0,53
100	20,30	0,42
120	22,30	0,36
150	25,30	0,29
175	27,80	0,24
200	31,30	0,22



JI Vulcasteel Wall (Micro costine)

Lana di roccia 

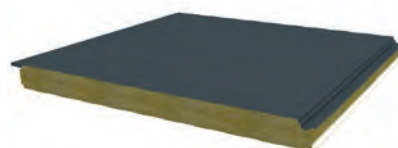
Spessore (mm)	Massa (kg/m ²)	Valore U (W/m ² K)
50	15,30	0,81
60	16,30	0,70
80	18,30	0,53
100	20,30	0,42
120	22,30	0,36
150	25,30	0,29
175	27,80	0,24
200	31,30	0,22



JI Vulcasteel Wall 1000FN (Lineari)

Lana di roccia 

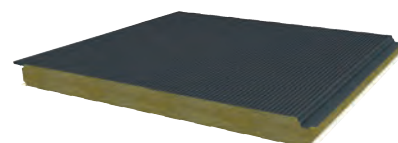
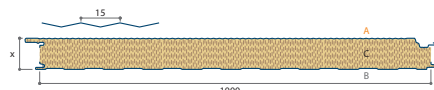
Spessore (mm)	Massa (kg/m ²)	Valore U (W/m ² K)
50	15,30	0,85
60	16,30	0,70
80	18,30	0,53
100	20,30	0,43
120	22,30	0,36
150	25,30	0,28
175	27,80	0,24
200	31,30	0,22



JI Vulcasteel Wall 1000FN (Micro costine)

Lana di roccia 

Spessore (mm)	Massa (kg/m ²)	Valore U (W/m ² K)
50	15,30	0,85
60	16,30	0,70
80	18,30	0,53
100	20,30	0,43
120	22,30	0,36
150	25,30	0,28
175	27,80	0,24
200	31,30	0,22



Accessori traslucidi

Pannelli luminosi (parete e tetto)

Poliestere singolo

Riferimento	Lunghezza disponibile (m)*
Jl 18-076-988	2,00
Jl 25-267-1070	6,00
Jl 33-250-1000	6,00
Jl 33-250-1000	7,60
Jl 35-207-1035	6,00
Jl 45-333-1000	6,00
Jl 45-333-1000	7,60

*in Belgio

Jl 18-076-988

Jl 25-267-1070

Jl 33-250-1000

Jl 35-207-1035

Jl 45-333-1000



Riferimento	Lunghezza disponibile (m)
Jl 106-250-750	6,00

poliestere, spessore 1 mm

Jl 106-250-750



Riferimento	Lunghezza disponibile (m)
greca	6,00
greca	7,60

poliestere, spessore 1 mm

Greca



Policarbonato singolo

Riferimento	Lunghezza disponibile (m)
Jl 33-250-1000	6,00
Jl 33-250-1000	7,60
Jl 37-250-1000	su misura
Jl 45-333-1000	6,00
Jl 45-333-1000	7,60

policarbonato, spessore 1 mm

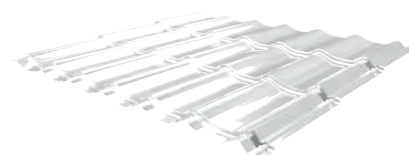
Jl 33-250-1000

Jl 37-250-1000

Jl 45-333-1000



Profilo per tegola traslucido in policarbonato



Accessori traslucidi

Policarbonato

JI Polycarb Traslucidi, singolo, 1 mm

Riferimento	Lunghezza disponibile (m)
JI Polycarb Traslucidi - 1 mm - 33-250	6,00 e 7,60
JI Polycarb Traslucidi - 1 mm - 45-333	6,00 e 7,60
JI Polycarb Traslucidi - 1 mm - 37-250	6,00 e 7,60

JI Polycarb Traslucidi -
1 mm - 33-250

JI Polycarb Traslucidi -
1 mm - 45-333

JI Polycarb Traslucidi -
1 mm - 37-250



JI Polycarb Traslucidi, singolo, 2,5 mm

Riferimento	Lunghezza disponibile (m)
JI Polycarb Traslucidi - 2,5 mm - 33-250	6,00 e 7,60
JI Polycarb Traslucidi - 2,5 mm - 45-333	6,00 e 7,60
JI Polycarb Traslucidi - 2,5 mm - 35-207	6,00 e 7,60

JI Polycarb Traslucidi -
2,5 mm - 33-250

JI Polycarb Traslucidi -
2,5 mm - 45-333

JI Polycarb Traslucidi -
2,5 mm - 35-207



Policarbonato estruso copertura

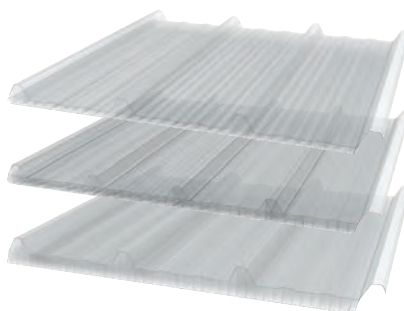
Riferimento	Lunghezza disponibile (m)*
JI Thermoroof 20 Polycarb 45-333	2,60 ~ 13,60
JI Thermoroof 30 Polycarb 33-250	2,60 ~ 13,60
JI Thermoroof 40 Polycarb 45-333	2,60 ~ 13,60

*distanza ogni 500 mm

JI Thermoroof 20
Polycarb 45-333

JI Thermoroof 30
Polycarb 33-250

JI Thermoroof 40
Polycarb 45-333





Jl Wall 1000FN PIR (Micro costine)



Jl 25-180-1085



Jl 45-333-1000 Copertura



Jl Eco PIR - Jl Wall 1000FN PIR



Jl Vulcasteel Roof



Jl Vieo Edge 500



Fissaggi angolari.



Jl Wall 1000FN PIR



Jl Vieo Edge 500





Joris Ide Auvergne-Sud Est

Z.I. Les Bonnes, 43410 Lempdes sur Allagnon, Francia
T +33 (0)4 71 74 61 00 F +33 (0)4 71 74 61 01 jiauvergne@joriside.fr

61 Route de Camsaud, 84700 Sorgues, Francia
T +33 (0)4 90 39 94 95 F +33 (0)4 90 48 17 55

Joris Ide Deutschland GmbH

Nikolaus-Otto-Strasse 6, 91522 Ansbach-Brodswinden, Germania
T +49 (0)981 188 929-00 F +49 (0)981 188 929-99 info@joriside.de

Joris Ide nv/sa

Hille 174, 8750 Zwevezele, Belgio
T +32 (0)51 61 07 77 F +32 (0)51 61 07 79 info@joriside.be