



# FAÇADE RANGE

Architectural profiles,  
sidings and cassettes

MR019 / 0622



## Index

<b>Architectural profiles</b>	<b>6</b>
JI Brevia 27	6
JI Brevia 41	8
JI Brevia 66	10
JI Brise 10	12
JI Ouragan P71	16
JI Ouragan P30	18
JI Etésien 37	20
JI Etésien H46	22
JI Sonora	24
JI Magine	28
<b>Sidings</b>	<b>32</b>
JI Grégale 300	32
JI Grégale B300-B400-B500	34
JI Grégale R300	36
JI Grégale BR400-BR500	38
JI Albe 300	40
JI Albe 500	42
JI Ponant 300	44
JI Ponant W	46
JI Ponant M	48
JI Ponant Convexe	50
JI Ponant Concave	52
<b>Cassettes</b>	<b>58</b>
JI Boréas XLS	58
JI Tramontane	60

Joris Ide NV is not responsible for printing errors and / or any differences between the images in this catalogue and the final product delivered. Joris Ide NV reserves the right to modify the technical specifications at any time without prior notice. To ensure that you have the latest version at hand, we invite you to scan this QR code to retrieve the latest version on our website [www.joriside.com](http://www.joriside.com).



# FAÇADE RANGE

## Architectural profiles, sidings and cassettes

Joris Ide is one of the leading brands in high-end building cladding for all markets. Our wide range of aesthetic facade claddings (architectural profiles, sidings and cassettes) opens up endless possibilities for architectural creation.



We work with you to develop innovative, customised solutions for architectural design:

- specific colours
- customised geometries
- customised patterns

Let your imagination run free and develop your next innovative design with us.

We have already assisted hundreds of professionals in the realisation of their projects. We will be happy to help you to assist you in the realisation of your projects, do not hesitate to contact us.

## Architectural profiles



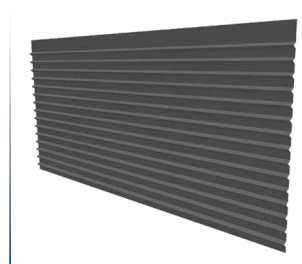
*JI Brevia 27*



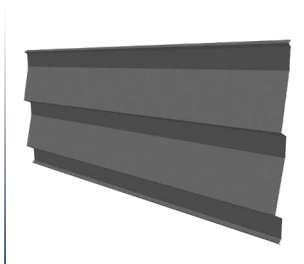
*JI Brevia 41*



*JI Brevia 66*



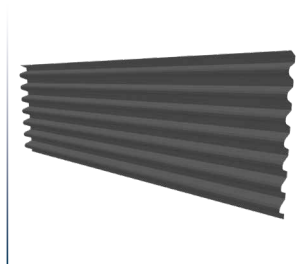
*JI Brise 10*



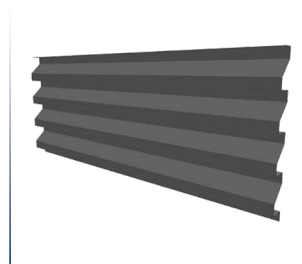
*JI Brise Vario B27*



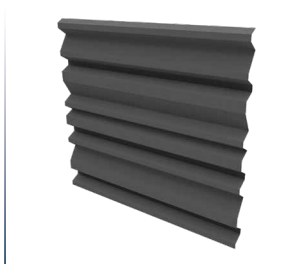
*JI Ouragan P71*



*JI Ouragan P30*



*JI Etésien 37*



*JI Etésien H46*



*JI Sonora*



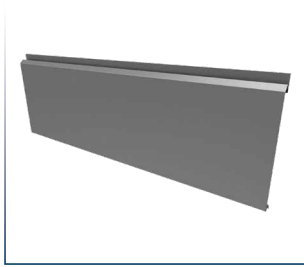
*JI Sonora Vario 3*

## The «JI Ponant» configurations

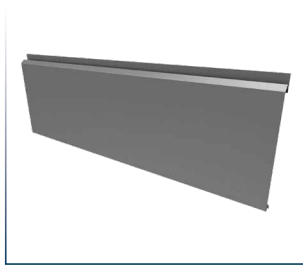


*Some configuration with JI Ponant 300, JI Ponant W, JI Ponant M, JI Ponant Convexe and JI Ponant Concave.*

## Sidings



*JI Grégale 300*



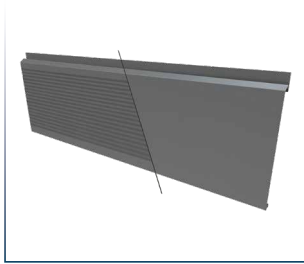
*JI Grégale B300-B400-B500*



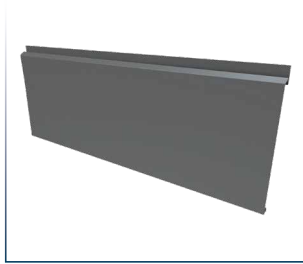
*JI Grégale R300*



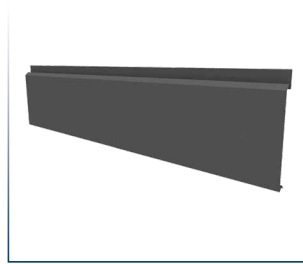
*JI Grégale BR400-BR500*



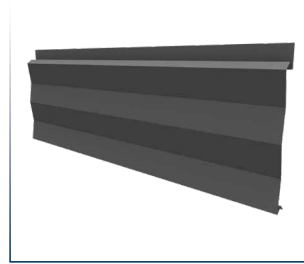
*JI Albe 300 / JI Albe 300 Microrib*



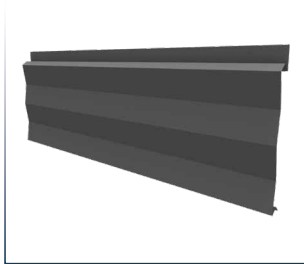
*JI Albe 500*



*JI Ponant 300*



*JI Ponant W*



*JI Ponant M*

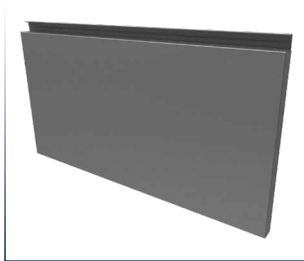


*JI Ponant Convexe*

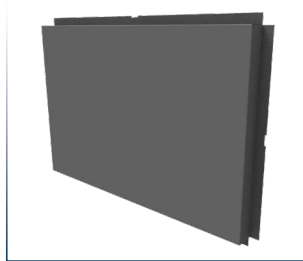


*JI Ponant Concave*

## Cassettes



*JI Boréas XLS*



*JI Tramontane*

# Architectural profiles



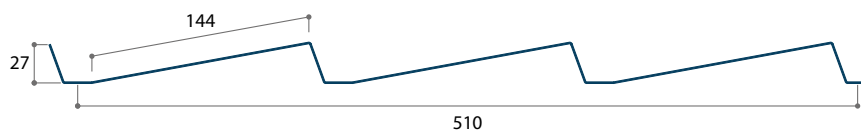


## Façade, Architectural profiles

### Jl Brevia 27

Jl Façade

Jl Brevia 27 profiles are architectural profiles for a siding utilization. These profiles are installed with a visible fixing on the secondary framework adapted to the support (panel, masonry, etc.). This product requires an adjusted support or an adjustable framework. Depending on the desired aesthetic, these profiles can be installed either vertically or horizontally. The installation is done by overlapping. Also, it can be used as awnings.



Article	Thickness (mm)	Weight (kg/m <sup>2</sup> )
3883	0,75	7,04

## Technical characteristics

Standard lengths	From 1200 to 6000 mm (possible on special request from 200 mm)
Width	510 mm
Metal	S320 GD (other materials available on special request : stainless steel, aluminium...)
Coatings	Polyester, Plastisol... according to the Joris Ide Façade Colorflow Special coatings on request
Accessories	Seals, flashings...

### Reference standards

Galvanized steel	EN 10346*
Coil coating	EN 10169* applied on galvanization
Tolerance	EN 508-1*
Calculations/Tests	NF P 34-503 interpreted according to annexes D, E and N from 'Recommandations Professionnelles RAGE Bardages'
Thickness	Standard tolerances according to EN 10143*

\* References set to European standard. National annex should be taken into account.



## Span tables Load type (kN/m<sup>2</sup>)

### Pressure

	Thickness (mm)	Span (m)										
		1,00	1,20	1,40	1,60	1,80	2,00	2,20	2,40	2,60	2,80	3,00
Single	0,75	5,90	3,56	2,24	1,50	1,05	0,77	0,58	0,44	0,35	0,28	0,23
Double	0,75	4,90	4,09	3,50	2,76	2,16	1,57	1,18	0,91	0,72	0,57	0,47

Max length in production = 6 m

### Suction

	Thickness (mm)	Span (m)										
		1,00	1,20	1,40	1,60	1,80	2,00	2,20	2,40	2,60	2,80	3,00
Single	0,75	4,38	3,65	2,75	1,84	1,29	0,94	0,71	0,55	0,43	0,34	0,28
Double	0,75	2,19	1,82	1,56	1,37	1,22	1,07	0,88	0,74	0,63	0,52	0,43

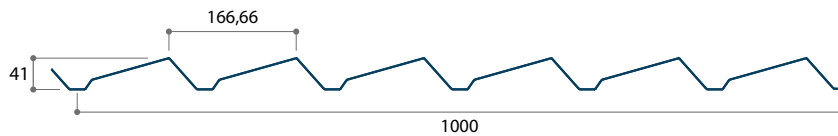
Max length in production = 6 m

## Façade, Architectural profiles

### Jl Breva 41

Jl Façade

Jl Breva 41 profiles are architectural profiles for a siding utilization. These profiles are installed with a visible fixing on the secondary framework adapted to the support (panel, masonry, etc.). This product requires an adjusted support or an adjustable framework. Depending on the desired aesthetic, these profiles can be installed either vertically or horizontally. The installation is done by overlapping. Also, it can be used as awnings.



Article	Thickness (mm)	Weight (kg/m <sup>2</sup> )
10310	0,75	7,18

## Technical characteristics

Standard lengths	From 1200 to 8000 mm (possible on special request from 200 mm)
Width	1000 mm
Metal	S320 GD (other materials available on special request: stainless steel, aluminium...)
Coatings	Polyester, Plastisol... according to the Joris Ide Façade Colorflow Special coatings on request
Accessories	Seals, flashings...

### Reference standards

Galvanized steel	EN 10346*
Coil coating	EN 10169* applied on galvanization
Tolerance	EN 508-1*
Thickness	Standard tolerances according to EN 10143*

\* References set to European standard. National annex should be taken into account.

## Span tables Load type (kN/m<sup>2</sup>)

Calculations according to EN 1993-1-3\*

### Pressure

	Thickness (mm)	Span (m)										
		1,40	1,60	1,80	2,00	2,20	2,40	2,60	2,80	3,00	3,20	3,40
Single	0,75	3,40	2,60	2,06	1,67	1,38	1,16	0,94	0,75	0,61	0,50	0,42
Double	0,75	3,92	3,15	2,59	2,17	1,84	1,59	1,38	1,21	1,07	0,96	0,86
Multi	0,75	4,72	3,81	3,14	2,60	2,15	1,81	1,54	1,33	1,15	0,95	0,79

Max length in production = 8 m  
hatch marks: the length exceeds the maximum production length that we could do

### Suction

	Thickness (mm)	Span (m)										
		1,40	1,60	1,80	2,00	2,20	2,40	2,60	2,80	3,00	3,20	3,40
Single	0,75	4,67	3,13	2,20	1,60	1,20	0,93	0,73	0,58	0,47	0,39	0,33
Double	0,75	3,40	2,60	2,06	1,67	1,38	1,16	0,99	0,85	0,74	0,65	0,58
Multi	0,75	4,25	3,25	2,57	2,08	1,72	1,45	1,23	1,06	0,90	0,74	0,62

Max length in production = 8 m  
hatch marks: the length exceeds the maximum production length that we could do

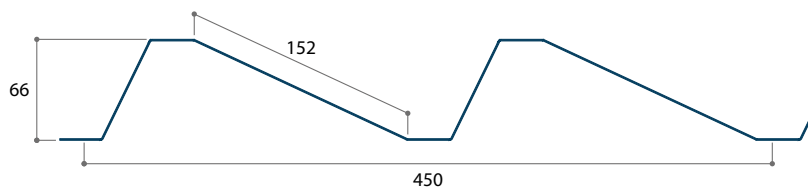
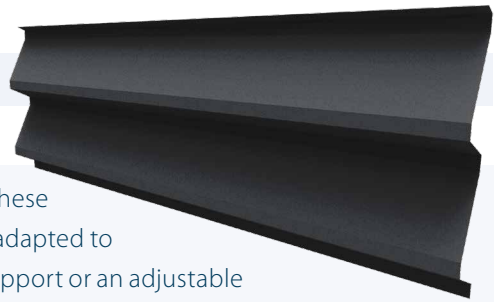
\* References set to European standard. National annex should be taken into account.

## Façade, Architectural profiles

### JI Brevia 66

JI Façade

JI Brevia 66 profiles are architectural profiles for a siding utilization. These profiles are installed with a visible fixing on the secondary framework adapted to the support (panel, masonry, etc.). This product requires an adjusted support or an adjustable framework. Depending on the desired aesthetic, these profiles can be installed either vertically or horizontally. The installation is done by overlapping. Also, it can be used as awnings.



Article	Thickness (mm)	Weight (kg/m <sup>2</sup> )
7172	0,75	7,98

## Technical characteristics

Standard lengths	From 1200 to 6000 mm (possible on special request from 200 mm)
Width	450 mm
Metal	S320 GD (other materials available on special request: stainless steel, aluminium...)
Coatings	Polyester, Plastisol.. according to the Joris Ide Façade Colorflow Special coatings on request
Accessories	Seals, flashings...

### Reference standards

Galvanized steel	EN 10346*
Coil coating	EN 10169* applied on galvanization
Tolerance	EN 508-1*
Thickness	Standard tolerances according to EN 10143*

\* References set to European standard. National annex should be taken into account.

## Span tables Load type (kN/m<sup>2</sup>)

Calculations according to EN 1993-1-3\*

### Pressure

	Thickness (mm)	Span (m)										
		2,40	2,60	2,80	3,00	3,20	3,40	3,60	3,80	4,00	4,20	4,40
Single	0,75	2,68	2,29	1,97	1,72	1,51	1,34	1,19	1,02	0,87	0,75	0,65
Double	0,75	1,85	1,63	1,45	1,30	1,17	1,06	0,97	0,88	0,81	0,75	0,69
Multi	0,75	2,21	1,95	1,74	1,56	1,41	1,28	1,17	1,07	0,98	0,90	0,84

Max length in production = 6 m  
hatch marks: the length exceeds the maximum production length that we could do

### Suction

	Thickness (mm)	Span (m)										
		2,40	2,60	2,80	3,00	3,20	3,40	3,60	3,80	4,00	4,20	4,40
Single	0,75	2,68	2,29	1,97	1,72	1,42	1,18	0,99	0,85	0,72	0,63	0,54
Double	0,75	2,56	2,23	1,96	1,72	1,51	1,34	1,19	1,07	0,97	0,88	0,80
Multi	0,75	2,95	2,61	2,32	2,07	1,85	1,66	1,49	1,34	1,20	1,10	1,00

Max length in production = 6 m  
hatch marks: the length exceeds the maximum production length that we could do

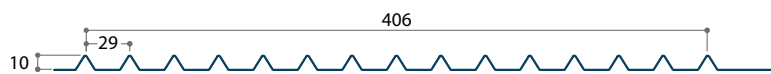
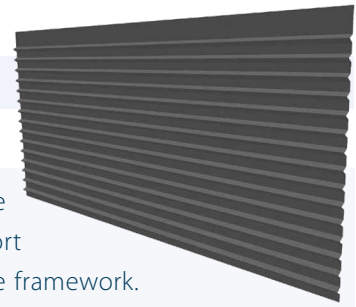
\* References set to European standard. National annex should be taken into account.

## Façade, Architectural profiles

### Jl Brise 10

Jl Façade

Jl Brise 10 profiles are architectural profiles for a siding utilization. These profiles are installed with a visible fixing on the secondary framework adapted to the support (panel, masonry, etc.). This product requires an adjusted support or an adjustable framework. Depending on the desired aesthetic, these profiles can be installed either vertically or horizontally. The installation is done by overlapping of one wavelength.



Article	Thickness (mm)	Weight (kg/m <sup>2</sup> )
6637	0,75	8,85

## Technical characteristics

Standard lengths	From 1200 to 6000 mm (possible on special request from 200 mm)
Width	406 mm
Metal	S320 GD (other materials available on special request: stainless steel, aluminium...)
Coatings	Polyester, Plastisol.. according to the Joris Ide Façade Colorflow Special coatings on request
Accessories	Seals, flashings...

### Reference standards

Galvanized steel	EN 10346*
Coil coating	EN 10169* applied on galvanization
Tolerance	EN 508-1*
Calculations/Tests	NF P 34-503 interpreted according to annexes D, E and N from 'Recommandations Professionnelles RAGE Bardages'
Thickness	Standard tolerances according to EN 10143*

\* References set to European standard. National annex should be taken into account.

## Span tables Load type (kN/m<sup>2</sup>)

### Pressure

	Thickness (mm)	Span (m)										
		1,00	1,20	1,40	1,60	1,80	2,00	2,20	2,40	2,60	2,80	3,00
Single	0,75	1,78	1,03	0,65	0,43	0,30	0,22	0,17	0,13	0,10	0,08	0,07
Double	0,75	4,23	2,45	1,54	1,03	0,72	0,53	0,40	0,31	0,24	0,19	0,16

Max length in production = 6 m

### Suction

	Thickness (mm)	Span (m)										
		1,00	1,20	1,40	1,60	1,80	2,00	2,20	2,40	2,60	2,80	3,00
Single	0,75	1,73	1,00	0,63	0,42	0,30	0,22	0,16	0,12	0,10	0,08	0,06
Double	0,75	3,03	1,75	1,11	0,74	0,52	0,38	0,28	0,22	0,17	0,14	0,11

Max length in production = 6 m

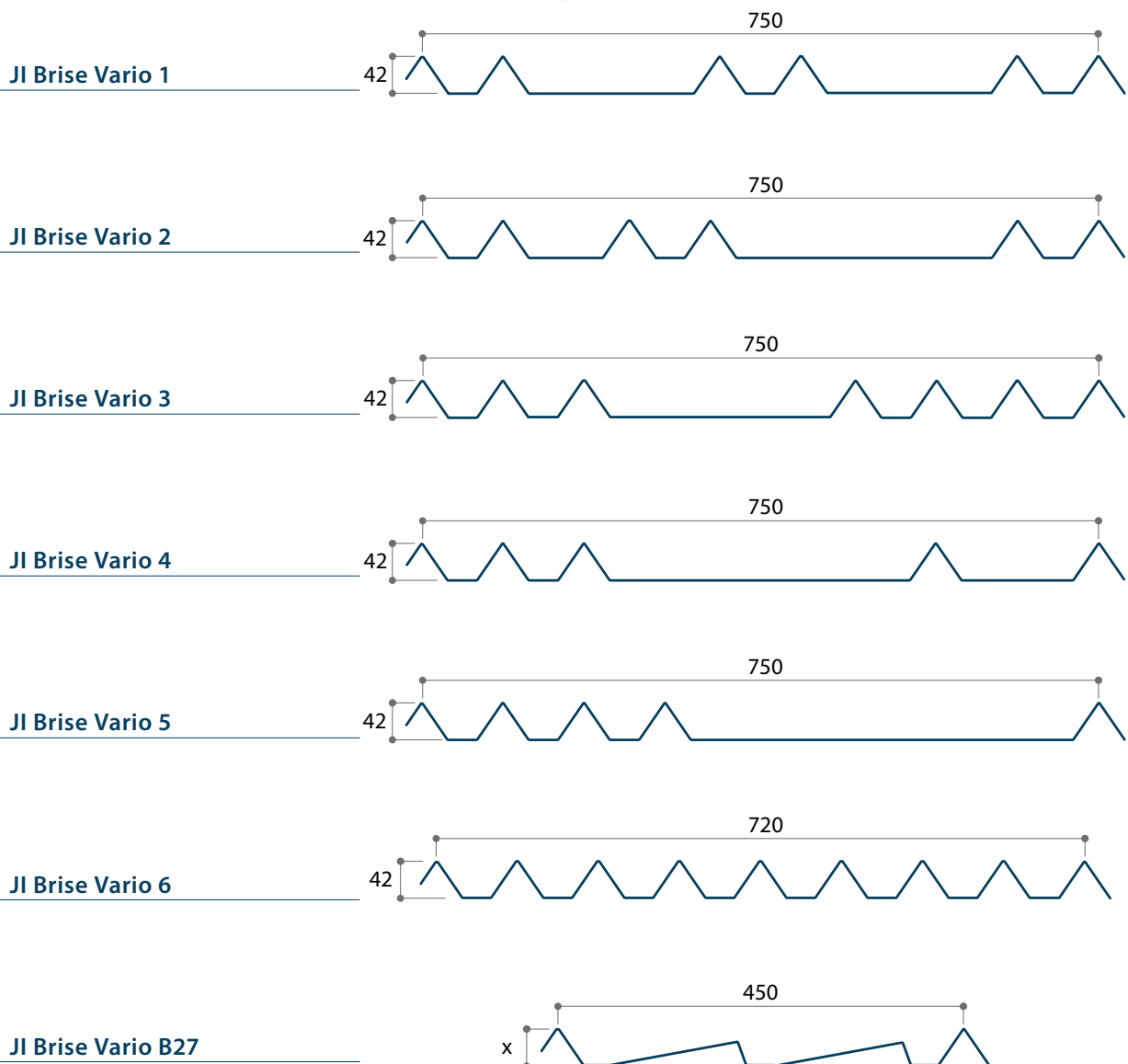
# Vario profiles

## JI Brise Vario

JI Façade

The «Vario» profiles in our range give you the opportunity to modify the appearance of the lines of the building envelope made with our products. By changing the number of waves and the size of the panels, we give you the hand on the development of your façade. Before any manufacturing, our technical department will take care of the acceptance of your project, respecting the technical constraints of your request and the ideas of your creative concept.

### Exemple of JI Brise Vario







Jl Brise 10 for offices



Jl Brise 10



Jl Brevia 27 for residential application.

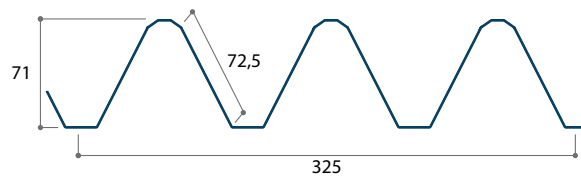
## Façade, Architectural profiles

### Jl Ouragan P71

Jl Façade



The Jl Ouragan P71 profile, with its innovative symmetrical wave design, offers a new architectural approach to façade cladding. This profile is designed for new buildings as well as for renovation, residential and commercial applications. These profiles are installed with a visible fixing on the secondary framework adapted to the support (panel, masonry, etc.). Depending on the desired aesthetic, these profiles can be installed either vertically or horizontally. The installation is done by overlapping. Also, it can be used as awnings.



Article	Thickness (mm)	Weight (kg/m <sup>2</sup> )
7169	0,75	11,05

## Technical characteristics

Standard lengths	From 1200 to 6000 mm (possible on special request from 200 mm)
Width	325 mm
Metal	S320 GD (other materials available on special request: stainless steel, aluminium...)
Coatings	Polyester, Plastisol... according to the Joris Ide Façade Colorflow Special coatings on request
Accessories	Seals, flashings...

### Reference standards

Galvanized steel	EN 10346*
Coil coating	EN 10169* applied on galvanization
Tolerance	EN 508-1*
Thickness	Standard tolerances according to EN 10143*

\* References set to European standard. National annex should be taken into account.

## Span tables Load type (kN/m<sup>2</sup>)

Calculations according to EN 1993-1-3\*

### Pressure

	Thickness (mm)	Span (m)										
		2,60	2,80	3,00	3,20	3,40	3,60	3,80	4,00	4,20	4,40	4,60
Single	0,75	3,77	3,02	2,46	2,02	1,69	1,42	1,21	1,04	0,90	0,78	0,68
Double	0,75	3,08	2,72	2,42	2,17	1,96	1,77	1,61	1,48	1,35	1,25	1,15
Multi	0,75	3,73	3,30	2,94	2,64	2,38	2,16	1,97	1,80	1,65	1,47	1,29

Max length in production = 6 m  
hatch marks: the length exceeds the maximum production length that we could do

### Suction

	Thickness (mm)	Span (m)										
		2,60	2,80	3,00	3,20	3,40	3,60	3,80	4,00	4,20	4,40	4,60
Single	0,75	3,49	2,80	2,27	1,87	1,56	1,32	1,12	0,96	0,83	0,72	0,63
Double	0,75	4,04	3,49	3,04	2,67	2,36	2,11	1,89	1,71	1,55	1,41	1,29
Multi	0,75	5,05	4,36	3,80	3,34	2,95	2,49	2,12	1,81	1,57	1,36	1,19

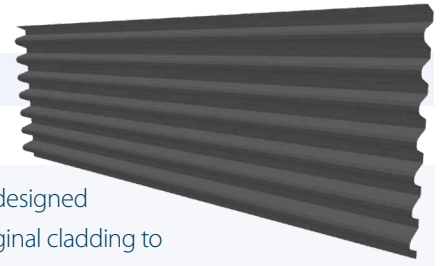
Max length in production = 6 m  
hatch marks: the length exceeds the maximum production length that we could do

\* References set to European standard. National annex should be taken into account.

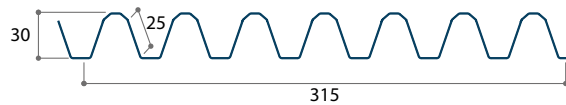
## Façade, Architectural profiles

### Jl Ouragan P30

Jl Façade



The Jl Ouragan P30 profile is a ridged façade cladding concept with visible fixing designed for both new build and renovation. Its very special geometric shape allows for original cladding to play on the effects of light and shadow. The profile Jl Ouragan has a flat wave trough. This profile is installed with a visible fixing on the secondary framework adapted to the support (panel, masonry, etc.). This product requires an adjusted support or an adjustable framework. Depending on the desired aesthetic, these profiles can be installed either vertically or horizontally. The installation is done by overlapping of the profiles.



Article	Thickness (mm)	Weight (kg/m <sup>2</sup> )
7167	0,75	11,40

## Technical characteristics

Standard lengths	From 1200 to 6000 mm (possible on special request from 200 mm)
Width	315 mm
Metal	S320 GD (other materials available on special request: stainless steel, aluminium...)
Coatings	Polyester, Plastisol... according to the Joris Ide Façade Colorflow Special coatings on request
Accessories	Seals, flashings....

### Reference standards

Galvanized steel	EN 10346*
Coil coating	EN 10169* applied on galvanization
Tolerance	EN 508-1*
Calculations/Tests	NF P 34-503 interpreted according to annexes D, E and N from 'Recommandations Professionnelles RAGE Bardages'
Thickness	Standard tolerances according to EN 10143*

\* References set to European standard. National annex should be taken into account.

## Span tables Load type (kN/m<sup>2</sup>)

### Pressure

	Thickness (mm)	Span (m)										
		1,00	1,20	1,40	1,60	1,80	2,00	2,20	2,40	2,60	2,80	3,00
Single	0,75	14,64	8,47	5,33	3,57	2,51	1,83	1,37	1,06	0,83	0,67	0,54
Double	0,75	14,28	11,90	10,00	6,70	4,71	3,43	2,58	1,99	1,56	1,25	1,02

Max length in production = 6 m

### Suction

	Thickness (mm)	Span (m)										
		1,00	1,20	1,40	1,60	1,80	2,00	2,20	2,40	2,60	2,80	3,00
Single	0,75	9,55	7,96	5,30	3,55	2,50	1,82	1,37	1,05	0,83	0,66	0,54
Double	0,75	4,77	3,98	3,41	2,98	2,65	2,39	2,17	1,69	1,33	1,06	0,86

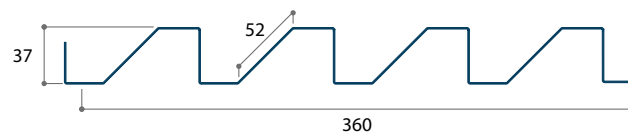
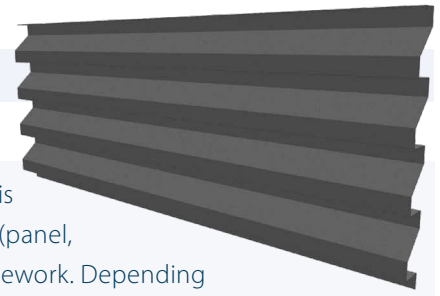
Max length in production = 6 m

## Façade, Architectural profiles

### Jl Etésien 37

Jl Façade

Jl Etésien 37 profiles are ridged façade cladding profiles. The installation is done with visible fixing, on a secondary framework adapted to the support (panel, masonry...). This product requires an adjusted support or an adjustable framework. Depending on the desired aesthetic, these profiles can be installed either vertically or horizontally. The installation is done by overlapping. This profile with trapezoidal waves can be used as well as awnings.



Article	Thickness (mm)	Weight (kg/m <sup>2</sup> )
7168	0,75	9,98

## Technical characteristics

Standard lengths	From 1200 to 6000 mm (possible on special request from 200 mm)
Width	360 mm
Metal	S320 GD (other materials available on special request : stainless steel, aluminium...)
Coatings	Polyester, Plastisol.. according to the Joris Ide Façade Colorflow Special coatings on request
Accessories	Seals, flashings...

### Reference standards

Galvanized steel	EN 10346*
Coil coating	EN 10169* applied on galvanization
Tolerance	EN 508-1*
Thickness	Standard tolerances according to EN 10143*

\* References set to European standard. National annex should be taken into account.

## Span tables Load type (kN/m<sup>2</sup>)

Calculations according to EN 1993-1-3\*

### Pressure

	Thickness (mm)	Span (m)										
		2,40	2,60	2,80	3,00	3,20	3,40	3,60	3,80	4,00	4,20	4,40
Single	0,75	1,74	1,37	1,09	0,89	0,73	0,61	0,52	0,44	0,38	0,32	0,28
Double	0,75	2,56	2,22	1,95	1,71	1,50	1,33	1,19	1,05	0,90	0,78	0,68
Multi	0,75	3,13	2,59	2,07	1,68	1,39	1,16	0,97	0,83	0,71	0,61	0,53

Max length in production = 6 m  
hatch marks: the length exceeds the maximum production length that we could do

### Suction

	Thickness (mm)	Span (m)										
		2,40	2,60	2,80	3,00	3,20	3,40	3,60	3,80	4,00	4,20	4,40
Single	0,75	1,46	1,15	0,92	0,75	0,62	0,51	0,43	0,37	0,32	0,27	0,24
Double	0,75	2,70	2,30	1,99	1,73	1,49	1,24	1,04	0,89	0,76	0,66	0,57
Multi	0,75	2,77	2,18	1,74	1,42	1,17	0,97	0,82	0,70	0,60	0,52	0,45

Max length in production = 6 m  
hatch marks: the length exceeds the maximum production length that we could do

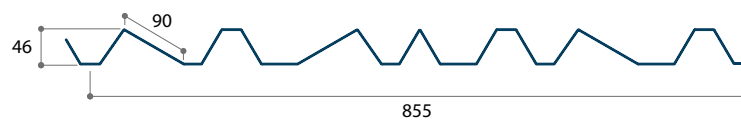
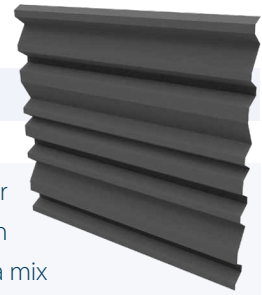
\* References set to European standard. National annex should be taken into account.

## Façade, Architectural profiles

### Jl Etésien H46

#### Jl Façade

The Jl Etésien H46 profile is a ridged facade cladding concept with visible fixing designed for both new buildings and renovation. The very special geometric shape allows you to create an original façade and to play on the effects of light and shadow. The profile Jl Etésien H46 profile is a mix of triangular, trapezoidal and asymmetrical waves, which gives it its special aesthetic. This product requires an adjusted support or an adjustable framework. Depending on the desired aesthetic, these profiles can be installed either vertically or horizontally. The installation is done by overlapping of the profiles.



Article	Thickness (mm)	Weight (kg/m <sup>2</sup> )
8846	0,75	8,40

## Technical characteristics

Standard lengths	From 1200 to 6000 mm (possible on special request from 200 mm)
Width	855 mm
Metal	S320 GD (other materials available on special request : stainless steel, aluminium...)
Coatings	Polyester, Plastisol.. according to the Joris Ide Façade Colorflow Special coatings on request
Accessories	Seals, flashings...

### Reference standards

Galvanized steel	EN 10346*
Coil coating	EN 10169* applied on galvanization
Tolerance	EN 508-1*
Calculations/Tests	NF P 34-503 interpreted according to annexes D, E and N from 'Recommandations Professionnelles RAGE Bardages'
Thickness	Standard tolerances according to EN 10143*

\* References set to European standard. National annex should be taken into account.



## Span tables Load type (kN/m<sup>2</sup>)

### ⇒ Pressure

	Thickness (mm)	Portées (m)										
		2,60	2,70	2,80	2,90	3,00	3,10	3,20	3,30	3,40	3,50	3,60
Single	0,75	1,17	1,04	0,92	0,83	0,75	0,69	0,61	0,56	0,53	0,48	0,44
Double	0,75	-	-	2,08	1,92	1,79	1,67	1,58	1,42	1,33	1,21	1,08

Max length in production = 4 m  
<sup>μ, n</sup> = no test value available

hatch marks: the length exceeds the maximum production length that we could do

### ⇐ Suction

	Thickness (mm)	Portées (m)										
		2,60	2,70	2,80	2,90	3,00	3,10	3,20	3,30	3,40	3,50	3,60
Single	0,75	0,83	0,75	0,67	0,58	0,54	0,50	0,44	-	-	-	-
Double	0,75	-	2,04	1,92	1,75	1,58	1,50	1,33	1,13	1,04	0,96	0,89

Max length in production = 4 m  
<sup>μ, n</sup> = no test value available

hatch marks: the length exceeds the maximum production length that we could do

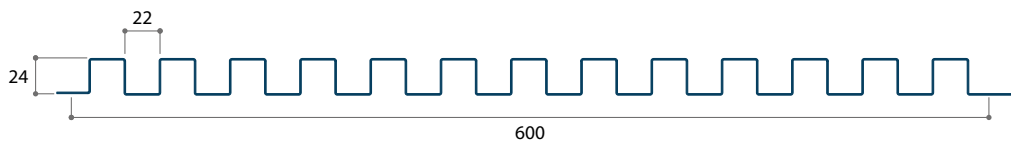
## Façade, Architectural profiles

### JI Sonora

#### JI Façade



The JI Sonora profile is a ridged façade cladding profile with visible fixing, designed for both new buildings and renovation, residential and commercial applications. This profile with regular square shapes is fixed to a secondary framework adapted to the support (panel, masonry, etc.). This product requires an adjusted support or an adjustable framework. Depending on the desired aesthetic, this profile can be installed either vertically or horizontally. The installation is done by overlapping a wave. It can be used as a window transom. At the very tip of the profiles, they cannot overlap each other transversely, so a joint profile will be necessary.



Article	Thickness (mm)	Weight (kg/m <sup>2</sup> )
7186	0,75	11,97

## Technical characteristics

Standard lengths	From 1200 to 6000 mm (possible on special request from 200 mm)
Width	600 mm
Metal	S320 GD (other materials available on special request : stainless steel, aluminium...)
Coatings	Polyester, Plastisol... according to the Joris Ide Façade Colorflow Special coatings on request
Accessories	Seals, flashings...

### Reference standards

Galvanized steel	EN 10346*
Coil coating	EN 10169* applied on galvanization
Tolerance	EN 508-1*
Calculations/Tests	NF P 34-503 interpreted according to annexes D, E and N from 'Recommandations Professionnelles RAGE Bardages'
Thickness	Standard tolerances according to EN 10143*

\* References set to European standard. National annex should be taken into account.

## Span tables Load type (kN/m<sup>2</sup>)

### Pressure

	Thickness (mm)	Span (m)										
		1,80	1,90	2,00	2,10	2,20	2,30	2,40	2,50	2,60	2,80	3,00
Single	0,75	2,08	1,83	1,58	1,33	1,17	1,04	0,92	0,79	0,71	0,58	0,48
Double	0,75	-	-	-	-	-	2,13	2,00	1,75	1,58	1,25	1,04

Max length in production = 6 m  
 "-" = no test value available

### Suction

	Thickness (mm)	Span (m)										
		1,80	1,90	2,00	2,10	2,20	2,30	2,40	2,50	2,60	2,80	3,00
Single	0,75	1,92	1,67	1,42	1,17	1,04	0,92	0,79	0,71	0,61	0,50	0,42
Double	0,75	2,08	1,96	1,83	1,75	1,67	1,63	1,50	1,25	1,17	0,92	0,75

Max length in production = 6 m

## Vario profiles

### Jl Sonora Vario

*Jl Façade*

The «Vario» profiles in our range give you the opportunity to modify the appearance of the lines of the building envelope made with our products. By changing the number of waves and the size of the panels, we give you the hand on the development of your façade. Before any manufacturing, our technical department will take care of the acceptance of your project, respecting the technical constraints of your request and the ideas of your creative concept.

#### Exemple of Jl Sonora Vario

Jl Sonora Vario 1



Jl Sonora Vario 2



Jl Sonora Vario 3



Jl Sonora Vario 4



Jl Sonora Vario 5



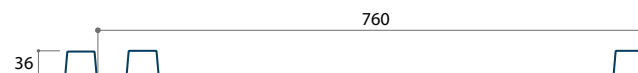
Jl Sonora Vario 6



Jl Sonora Vario 7

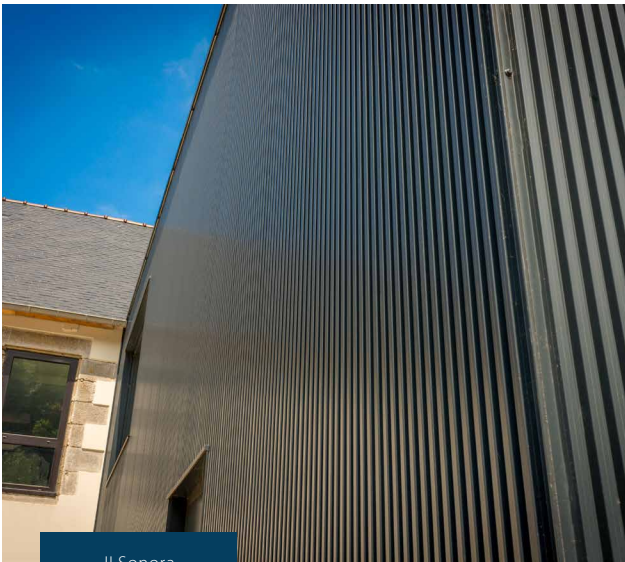


Jl Sonora Vario 8



Jl Sonora Vario B27





Jl Sonora



Jl Sonora



Jl Sonora for a Sports hall



Jl Sonora



Jl Sonora



Jl Sonora for offices

## Façade, Architectural profiles

### Jl Magine

#### Jl Façade

Jl Magine is a ridged façade cladding concept with visible fixings for new buildings or renovation of houses, offices, public buildings. Jl Magine is presented in the form of a ribbed profile with a customised geometry at the service of your architectural needs. Jl Magine can be used for single skin cladding or multi skin cladding.



Article	Thickness (mm)	Weight (kg/m <sup>2</sup> )
10280	0,75	Depending on geometric specifications

## Technical characteristics

Standard lengths	to be defined
Width	depending on the study of our façade experts
Metal	S320 GD, other materials available on special request
Coatings	Polyester, Plastisol... according to the Joris Ide Façade Colorflow Special coatings on request
Accessories	to be defined
Application	responsability of the customer – advices on request

### Reference standards

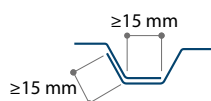
Galvanized steel	EN 10346*
Coil coating	EN 10169* applied on galvanization
Tolerance	EN 508-1* and normal tolerances on thickness according to EN 10143*
Marking	CE according to EN 14782* along with his DoP
Size calculation	Calculation according to EN 1993-1-3*
Wind Loads	According to EN 1991-1-4 + National Annexe

### Performances

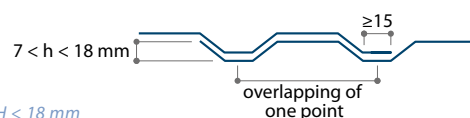
Fire reaction	Euroclasse A1 for galvanized steel (according to CE decision - réf. 96/603/CE) and for coated polyester 25 microns (according to CE -réf. 2010/737/UE) Other coatings on request
---------------	---

## Geometrical condition

Jl Magine is an article to let your imagination run free. However, there are some specifications to respect for the overlapping. Below you will find examples of how the longitudinal joint should look depending on the height of the profile.



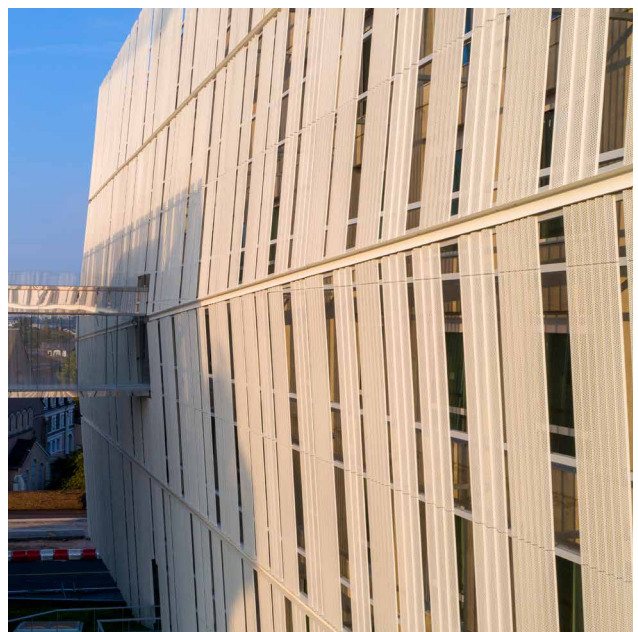
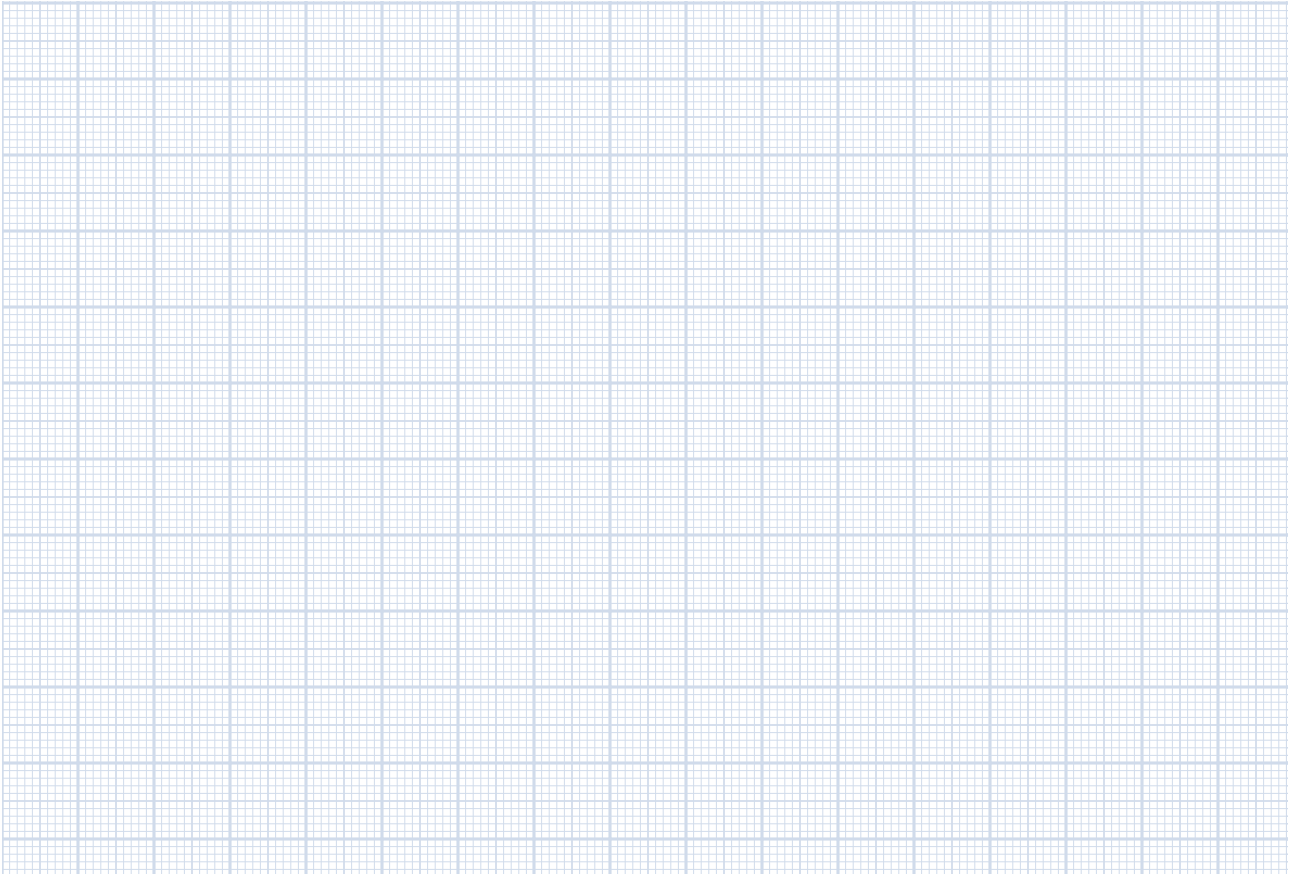
$H \geq 18 \text{ mm}$



$7 \text{ mm} < h < 18 \text{ mm}$

\* References set to European standard. National annex should be taken into account.

# Get your pencils ready!



# Sidings





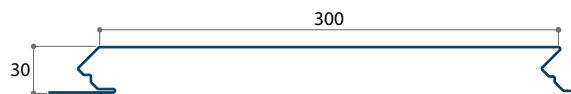
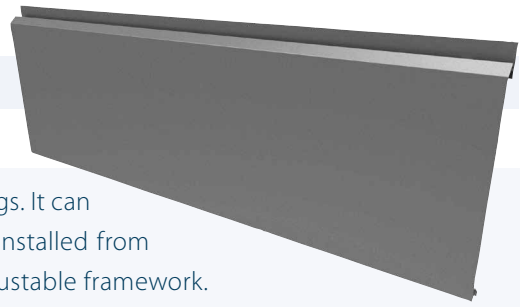


## Façade, Sidings

### Jl Grégale 300

Jl Façade

The Jl Grégale 300 is a flat façade cladding system with hidden fixings. It can be used for both new construction and renovation. This siding is installed from bottom to top. This product requires an adjusted support or an adjustable framework.



Article	Thickness (mm)	Width (mm)	Weight (kg/m <sup>2</sup> )
7702	1,00	300	11,12

## Technical characteristics

Standard lengths	From 450 to 8000 mm
Metal	S320 GD
Coatings	Polyester, Plastisol... according to the Joris Ide Façade Colorflow Special coatings on request
Accessoires	Flashings

### Reference standards

Galvanized steel	EN 10346*
Coil coating	EN 10169* applied on galvanization
Tolerance	EN 508-1*
Calculations/Tests	NF P 34-503 interpreted according to annexes D, E and N from 'Recommandations Professionnelles RAGE Bardages'
Thickness	Standard tolerances according to EN 10143*

### Flashings

Dimensions and details on request.

\* References set to European standard. National annex should be taken into account.

## Span tables Load type (kN/m<sup>2</sup>)

### Pressure

	Thickness (mm)	Span (m)										
		1,00	1,20	1,40	1,60	1,80	2,00	2,20	2,40	2,60	2,80	3,00
Single	1,00	6,73	3,89	2,45	1,64	1,15	0,84	0,63	0,49	0,38	0,31	0,25
Double	1,00	5,56	4,63	3,97	3,25	2,56	2,05	1,54	1,19	0,93	0,75	0,61

Max length in production = 8 m

### Suction

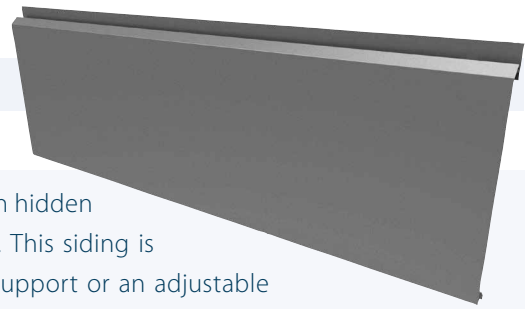
	Thickness (mm)	Span (m)										
		1,00	1,20	1,40	1,60	1,80	2,00	2,20	2,40	2,60	2,80	3,00
Single	1,00	7,36	4,98	3,14	2,10	1,48	1,08	0,81	0,62	0,49	0,39	0,32
Double	1,00	4,40	3,67	3,15	2,75	2,36	1,72	1,29	1,00	0,78	0,63	0,51

Max length in production = 8 m

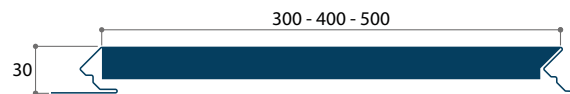
## Façade, Sidings

### Jl Grégale B300-B400-B500

Jl Façade



The Jl Grégale B300-B400-B500 is a flat façade cladding system with hidden fixings. It can be used for both new construction and renovation. This siding is installed from bottom to top. This product requires an adjusted support or an adjustable framework.



Article	Thickness (mm)	Width (mm)	Weight (kg/m <sup>2</sup> )
7704	1,00	300	11,12
7705	1,00	400	10,30
7706	1,00	500	9,81

## Technical characteristics

Standard lengths	From 450 to 8000 mm
Width	300 - 400 - 500 mm
Metal	S320 GD
Coatings	Polyester, Plastisol... according to the Joris Ide Façade Colorflow Special coatings on request
Accessoires	Flashings

### Reference standards

Galvanized steel	EN 10346*
Coil coating	EN 10169* applied on galvanization
Tolerance	EN 508-1*
Calculations/Tests	NF P 34-503 interpreted according to annexes D, E and N from 'Recommandations Professionnelles RAGE Bardages'
Thickness	Standard tolerances according to EN 10143*

### Flashings

Dimensions and details on request.

\* References set to European standard. National annex should be taken into account.

## Span tables Load type (kN/m<sup>2</sup>)\*

### ➔ Pressure

Tables only for JI Grégale B300

	Thickness (mm)	Span (m)										
		1,00	1,20	1,40	1,60	1,80	2,00	2,20	2,40	2,60	2,80	3,00
Single	1,00	6,35	5,30	3,74	2,50	1,76	1,28	0,96	0,74	0,58	0,47	0,38
Double	1,00	3,18	2,65	2,27	1,99	1,77	1,59	1,44	1,22	0,96	0,77	0,63

Max length in production = 8 m

### ⚡ Suction

Tables only for JI Grégale B300

	Thickness (mm)	Span (m)										
		1,00	1,20	1,40	1,60	1,80	2,00	2,20	2,40	2,60	2,80	3,00
Single	1,00	6,08	5,06	3,31	2,22	1,56	1,14	0,85	0,66	0,52	0,41	0,34
Double	1,00	3,04	2,53	2,17	1,90	1,69	1,52	1,27	0,98	0,77	0,62	0,50

Max length in production = 8 m

\* JI Gregale B400 and B500 load tables available on request

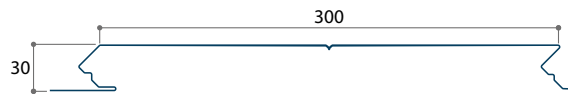
## Façade, Sidings

### JI Grégale R300

JI Façade



The JI Grégale R300 grooved siding is a flat façade cladding system with hidden fixings. It can be used for both new build and renovation. This grooved siding ('trompe l'oeil effect') is installed from bottom to top. This product requires an adjusted support or an adjustable framework.



Article	Thickness (mm)	Width (mm)	Weight (kg/m <sup>2</sup> )
7703	1,00	300	11,12

## Technical characteristics

Standard lengths	From 450 to 8000 mm
Width	300 mm
Metal	S320 GD
Coatings	Polyester, Plastisol... according to the Joris Ide Façade Colorflow Special coatings on request
Accessoires	Flashings

### Reference standards

Galvanized steel	EN 10346*
Coil coating	EN 10169* applied on galvanization
Tolerance	EN 508-1*
Thickness	Standard tolerances according to EN 10143*

### Flashings

Dimensions and details on request.

\* References set to European standard. National annex should be taken into account.

## Span tables Load type (kN/m<sup>2</sup>)

### Pressure

	Thickness (mm)	Span (m)										
		1,00	1,20	1,40	1,60	1,80	2,00	2,20	2,40	2,60	2,80	3,00
Single	1,00	7,14	4,96	3,64	2,71	1,90	1,39	1,04	0,80	0,63	0,51	0,41
Double	1,00	3,15	2,37	1,85	1,48	1,22	1,02	0,86	0,74	0,65	0,57	0,50
Multi	1,00	3,77	2,84	2,22	1,79	1,47	1,24	1,05	0,90	0,79	0,69	0,61

Max length in production = 8 m  
hatch marks: the length exceeds the maximum production length that we could do

### Suction

	Thickness (mm)	Span (m)										
		1,00	1,20	1,40	1,60	1,80	2,00	2,20	2,40	2,60	2,80	3,00
Single	1,00	4,59	3,19	2,34	1,57	1,10	0,80	0,60	0,47	0,37	0,29	0,24
Double	1,00	4,90	3,85	3,11	2,55	2,11	1,76	1,45	1,12	0,88	0,71	0,57
Multi	1,00	5,35	4,26	3,48	2,89	2,09	1,52	1,14	0,88	0,69	0,55	0,45

Max length in production = 8 m  
hatch marks: the length exceeds the maximum production length that we could do

\* References set to European standard. National annex should be taken into account.

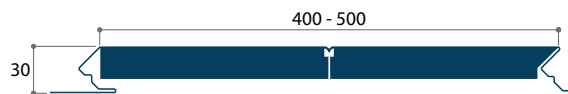
## Façade, Sidings

### JI Grégale BR400-BR500

JI Façade



The JI Grégale BR400-BR500 grooved siding is a flat façade cladding system with hidden fixings. It can be used for both new build and renovation. This grooved siding ('trompe l'oeil effect') is installed from bottom to top. This product requires an adjusted support or an adjustable framework.



Article	Thickness (mm)	Width (mm)	Weight (kg/m <sup>2</sup> )
7709	1,00	400	10,30
7710	1,00	500	9,81

## Technical characteristics

Standard lengths	From 450 to 8000 mm
Width	300 - 400 - 500 mm
Metal	S320 GD
Coatings	Polyester, Plastisol... according to the Joris Ide Façade Colorflow Special coatings on request
Accessoires	Flashings
Application	Horizontal

### Reference standards

Galvanized steel	EN 10346*
Coil coating	EN 10169* applied on galvanization
Tolerance	EN 508-1*
Thickness	Standard tolerances according to EN 10143*

### Flashings

Dimensions and details on request.

\* References set to European standard. National annex should be taken into account.



## Span tables Load type (kN/m<sup>2</sup>)\*

Calculations according to EN 1993-1-3\*\*

### Pressure

Tables only for JI Grégale BR500

	Thickness (mm)	Span (m)										
		1,00	1,20	1,40	1,60	1,80	2,00	2,20	2,40	2,60	2,80	3,00
Single	1,00	4,33	3,00	2,21	1,69	1,19	0,87	0,65	0,50	0,40	0,32	0,26
Double	1,00	1,72	1,29	1,00	0,80	0,65	0,54	0,46	0,39	0,34	0,30	0,26
Multi	1,00	2,07	1,55	1,21	0,97	0,79	0,66	0,56	0,48	0,42	0,37	0,32

Max length in production = 8 m  
hatch marks: the length exceeds the maximum production length that we could do

### Suction

Tables only for JI Grégale BR500

	Thickness (mm)	Span (m)										
		1,00	1,20	1,40	1,60	1,80	2,00	2,20	2,40	2,60	2,80	3,00
Single	1,00	2,34	1,50	0,95	0,63	0,45	0,32	0,24	0,19	0,15	0,12	0,10
Double	1,00	2,12	1,71	1,41	1,19	1,02	0,78	0,59	0,45	0,36	0,29	0,23
Multi	1,00	2,27	1,84	1,53	1,20	0,84	0,61	0,46	0,36	0,28	0,22	0,18

Max length in production = 8 m  
hatch marks: the length exceeds the maximum production length that we could do

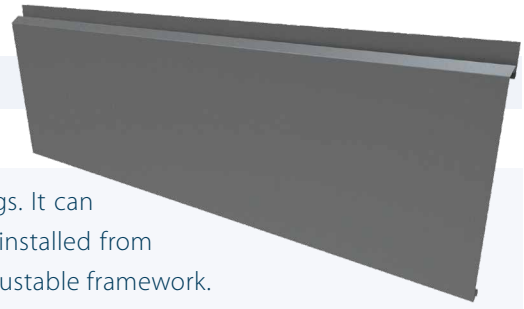
\* JI Grégale BR400 load tables available on request

\*\* References set to European standard. National annex should be taken into account.

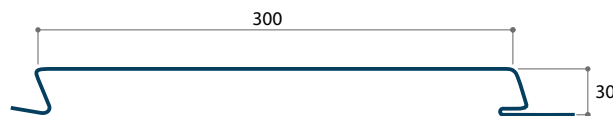
## Façade, Sidings

### JI Albe 300

JI AuvSE



The JI Albe 300 is a flat façade cladding system with hidden fixings. It can be used for both new construction and renovation. This siding is installed from bottom to top. This product requires an adjusted support or an adjustable framework.



Article	Thickness (mm)	Width (mm)	Weight (kg/m <sup>2</sup> )
8593	1,00	300	11,12

Possibility to study other width

## Technical characteristics

Standard lengths	From 1000 to 8000 mm
Width	300 mm
Metal	S320 GD (other materials available on special request : stainless steel, aluminium...)
Coatings	Polyester, Plastisol... according to the Joris Ide Façade Colorflow Special coatings on request
Accessoires	Flashings

### Reference standards

Galvanized steel	EN 10346*
Coil coating	EN 10169* applied on galvanization
Tolerance	EN 508-1*
Thickness	Standard tolerances according to EN 10143*

### Flashings

Dimensions and details on request.

\* References set to European standard. National annex should be taken into account.

## Span tables Load type (kN/m<sup>2</sup>)

Calculations according to EN 1993-1-3\*

### ⇒ Pressure

	Thickness (mm)	Span (m)										
		1,00	1,20	1,40	1,60	1,80	2,00	2,20	2,40	2,60	2,80	3,00
Single	1,00	5,07	3,52	2,59	1,92	1,35	0,98	0,74	0,57	0,45	0,36	0,29
Double	1,00	3,22	2,40	1,85	1,48	1,21	1,01	0,85	0,73	0,63	0,55	0,48
Multi	1,00	3,87	2,89	2,25	1,80	1,47	1,23	1,04	0,89	0,77	0,68	0,55

Max length in production = 8 m  
hatch marks: the length exceeds the maximum production length that we could do

### ⇐ Suction

	Thickness (mm)	Span (m)										
		1,00	1,20	1,40	1,60	1,80	2,00	2,20	2,40	2,60	2,80	3,00
Single	1,00	4,30	2,99	2,19	1,63	1,15	0,84	0,63	0,48	0,38	0,30	0,25
Double	1,00	4,48	3,37	2,57	1,98	1,56	1,27	1,05	0,88	0,75	0,65	0,56
Multi	1,00	5,05	3,89	3,06	2,44	1,95	1,57	1,19	0,92	0,72	0,58	0,47

Max length in production = 8 m  
hatch marks: the length exceeds the maximum production length that we could do

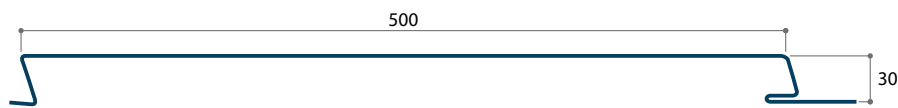
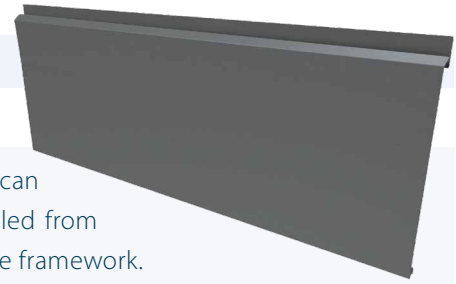
\* References set to European standard. National annex should be taken into account.

## Façade, Sidings

### JI Albe 500

JI AuvSE

The JI Albe 300 is a flat façade cladding system with hidden fixings. It can be used for both new construction and renovation. This siding is installed from bottom to top. This product requires an adjusted support or an adjustable framework.



Article	Thickness (mm)	Width (mm)	Weight (kg/m <sup>2</sup> )
8594	1,50	500	14,72

Possibility to study other width

## Technical characteristics

Standard lengths	From 450 to 8000 mm
Width	500 mm
Metal	S320 GD (other materials available on special request : stainless steel, aluminium...)
Coatings	Polyester, Plastisol... according to the Joris Ide Façade Colorflow Special coatings on request
Accessoires	Flashings

### Reference standards

Galvanized steel	EN 10346*
Coil coating	EN 10169* applied on galvanization
Tolerance	EN 508-1*
Calculations/Tests	NF P 34-503 interpreted according to annexes D, E and N from 'Recommandations Professionnelles RAGE Bardages'
Thickness	Standard tolerances according to EN 10143*

### Flashings

Dimensions and details on request.

\* References set to European standard. National annex should be taken into account.

## Span tables Load type (kN/m<sup>2</sup>)

### Pressure

	Thickness (mm)	Span (m)										
		1,00	1,20	1,40	1,60	1,80	2,00	2,20	2,40	2,60	2,80	3,00
Single	1,50	3,91	3,26	2,79	2,22	1,56	1,14	0,85	0,66	0,52	0,41	0,34
Double	1,50	1,95	1,63	1,40	1,22	1,09	0,98	0,89	0,81	0,75	0,70	0,62

Max length in production = 8 m

### Suction

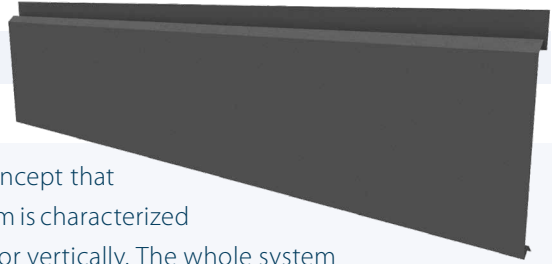
	Thickness (mm)	Span (m)										
		1,00	1,20	1,40	1,60	1,80	2,00	2,20	2,40	2,60	2,80	3,00
Single	1,50	2,03	1,69	1,45	1,27	1,12	0,91	0,75	0,63	0,54	0,44	0,36
Double	1,50	1,01	0,85	0,72	0,63	0,56	0,51	0,46	0,42	0,39	0,36	0,34

Max length in production = 8 m

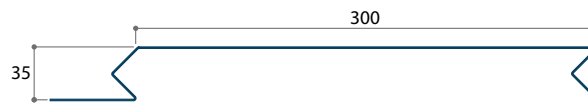
## Façade, Sidings

### JI Ponant 300

JI Façade



The JI Ponant 300 siding is a flat and hidden façade cladding concept that can be used in both new build and renovation projects. This system is characterized by a succession of interlocking slats that can be laid horizontally or vertically. The whole system is mechanically fixed to a secondary framework which is attached to the main structure. This product requires an adjusted support or an adjustable framework. Not possible to use it as ceiling application.



Article	Thickness (mm)	Width (mm)	Weight (kg/m <sup>2</sup> )
7005	1,00	300	11,20

Possibility to study other width

## Technical characteristics

Standard lengths	From 200 to 6000 mm
Width	300 mm
Metal	S320 GD (other materials available on special request : stainless steel, aluminium...)
Coatings	Polyester, Plastisol... according to the Joris Ide Façade Colorflow Special coatings on request
Accessoires	Flashings

### Reference standards

Galvanized steel	EN 10346*
Coil coating	EN 10169* applied on galvanization
Tolerance	EN 508-1*
Thickness	Standard tolerances according to EN 10143*

### Flashings

Dimensions and details on request.

\* References set to European standard. National annex should be taken into account.

## Span tables Load type (kN/m<sup>2</sup>)

Calculations according to EN 1993-1-3\*

### Pressure

	Thickness (mm)	Span (m)										
		1,00	1,20	1,40	1,60	1,80	2,00	2,20	2,40	2,60	2,80	3,00
Single	1,00	8,64	6,00	4,41	3,38	2,57	1,87	1,41	1,08	0,85	0,68	0,56
Double	1,00	3,01	2,25	1,75	1,40	1,15	0,96	0,81	0,70	0,61	0,53	0,47
Multi	1,00	3,61	2,71	2,12	1,70	1,40	1,17	0,99	0,85	0,74	0,65	0,58

Max length in production = 6 m  
hatch marks: the length exceeds the maximum production length that we could do

### Suction

	Thickness (mm)	Span (m)										
		1,00	1,20	1,40	1,60	1,80	2,00	2,20	2,40	2,60	2,80	3,00
Single	1,00	4,24	2,94	2,16	1,66	1,31	1,03	0,77	0,60	0,47	0,37	0,30
Double	1,00	5,95	4,68	3,77	2,94	2,33	1,88	1,56	1,31	1,11	0,90	0,73
Multi	1,00	6,49	5,06	3,72	2,84	2,25	1,82	1,46	1,13	0,89	0,71	0,58

Max length in production = 6 m  
hatch marks: the length exceeds the maximum production length that we could do

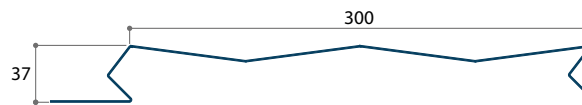
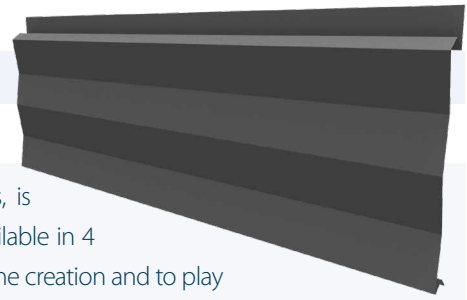
\* References set to European standard. National annex should be taken into account.

## Façade, Sidings

### JI Ponant W

#### JI Façade

This concept of façade cladding, with a flat appearance and hidden fixings, is designed for both new buildings and renovations. Its particular geometry (available in 4 versions: JI Ponant W, JI Ponant M, JI Ponant Convex, JI Ponant Concave) allows the creation and to play with light and shadow on the facades. Its interlocking system allows products of different shapes to be "mixed" on the façade. The sidings are mechanically fixed to a secondary framework attached to the structure. This product requires an adjusted support or an adjustable framework. It is not possible to use it as ceiling application.



Article	Thickness (mm)	Width (mm)	Weight (kg/m <sup>2</sup> )
5545	1.00	300	11,12

## Technical characteristics

Standard lengths	From 200 to 6000 mm
Width	300 mm
Metal	S320 GD (other materials available on special request : stainless steel, aluminium...)
Coatings	Polyester, Plastisol... according to the Joris Ide Façade Colorflow Special coatings on request
Accessoires	Flashings

### Reference standards

Galvanized steel	EN 10346*
Coil coating	EN 10169* applied on galvanization
Tolerance	EN 508-1*
Thickness	Standard tolerances according to EN 10143*

### Flashings

Dimensions and details on request.

\* References set to European standard. National annex should be taken into account.



## Span tables Load type (kN/m<sup>2</sup>)

Calculations according to EN 1993-1-3\*

### ⇒ Pressure

	Thickness (mm)	Span (m)										
		1,00	1,20	1,40	1,60	1,80	2,00	2,20	2,40	2,60	2,80	3,00
Single	1,00	8,46	5,87	4,32	3,09	2,17	1,58	1,19	0,92	0,72	0,58	0,47
Double	1,00	2,93	2,18	1,70	1,36	1,11	0,93	0,78	0,67	0,58	0,51	0,45
Multi	1,00	3,51	2,63	2,05	1,64	1,35	1,13	0,96	0,82	0,71	0,63	0,55

Max length in production = 6 m  
hatch marks: the length exceeds the maximum production length that we could do

### ⇐ Suction

	Thickness (mm)	Span (m)										
		1,00	1,20	1,40	1,60	1,80	2,00	2,20	2,40	2,60	2,80	3,00
Single	1,00	4,03	2,80	2,06	1,57	1,22	0,89	0,67	0,51	0,40	0,32	0,26
Double	1,00	3,39	2,75	2,30	1,96	1,69	1,48	1,31	1,16	0,97	0,78	0,63
Multi	1,00	3,61	2,94	2,47	2,11	1,84	1,62	1,26	0,97	0,76	0,61	0,50

Max length in production = 6 m  
hatch marks: the length exceeds the maximum production length that we could do

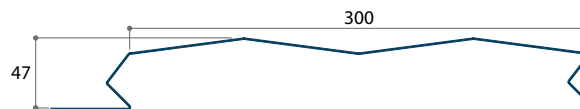
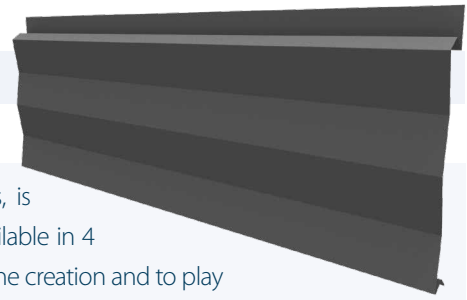
\* References set to European standard. National annex should be taken into account.

## Façade, Sidings

### JI Ponant M

#### JI Façade

This concept of façade cladding, with a flat appearance and hidden fixings, is designed for both new buildings and renovations. Its particular geometry (available in 4 versions: JI Ponant W, JI Ponant M, JI Ponant Convex, JI Ponant Concave) allows the creation and to play with light and shadow on the facades. Its interlocking system allows products of different shapes to be "mixed" on the façade. The sidings are mechanically fixed to a secondary framework attached to the structure. This product requires an adjusted support or an adjustable framework. It is not possible to use it as ceiling application.



Article	Thickness (mm)	Width (mm)	Weight (kg/m <sup>2</sup> )
7712	1,00	300	11,12

## Technical characteristics

standard lenghts	From 200 to 6000 mm
Width	300 mm
Metal	S320 GD (other materials available on special request : stainless steel, aluminium...)
Coatings	Polyester, Plastisol... according to the Joris Ide Façade Colorflow
Accessoires	Special coatings on request Flashings

### Reference standards

Galvanized steel	EN 10346*
Coil coating	EN 10169* applied on galvanization
Tolerance	EN 508-1*
Thickness	Standard tolerances according to EN 10143*

### Flashings

Dimensions and details on request.

\* References set to European standard. National annex should be taken into account.

## Span tables Load type (kN/m<sup>2</sup>)

Calculations according to EN 1993-1-3\*

### Pressure

	Thickness (mm)	Span (m)										
		1,00	1,20	1,40	1,60	1,80	2,00	2,20	2,40	2,60	2,80	3,00
Single	1,00	8,09	5,62	4,13	3,00	2,11	1,54	1,16	0,89	0,70	0,56	0,46
Double	1,00	2,82	2,10	1,63	1,30	1,06	0,88	0,75	0,64	0,56	0,48	0,42
Multi	1,00	3,39	2,54	1,97	1,58	1,29	1,08	0,91	0,78	0,68	0,60	0,53

Max length in production = 6 m  
hatch marks: the length exceeds the maximum production length that we could do

### Suction

	Thickness (mm)	Span (m)										
		1,00	1,20	1,40	1,60	1,80	2,00	2,20	2,40	2,60	2,80	3,00
Single	1,00	3,79	2,63	1,94	1,48	1,08	0,78	0,59	0,45	0,36	0,29	0,23
Double	1,00	3,37	2,73	2,28	1,94	1,67	1,46	1,29	1,09	0,86	0,69	0,56
Multi	1,00	3,59	2,92	2,45	2,10	1,82	1,48	1,11	0,86	0,68	0,54	0,44

Max length in production = 6 m  
hatch marks: the length exceeds the maximum production length that we could do

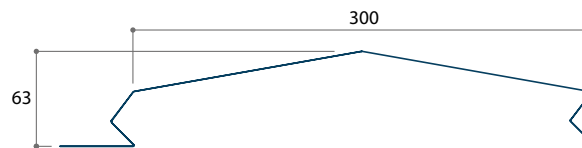
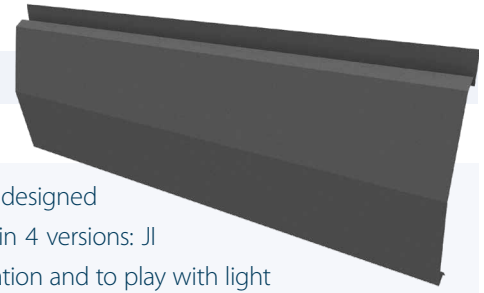
\* References set to European standard. National annex should be taken into account.

## Façade, Sidings

### JI Ponant Convexe

#### JI Façade

This concept of façade cladding, with a flat appearance and hidden fixings, is designed for both new buildings and renovations. Its particular geometry (available in 4 versions: JI Ponant W, JI Ponant M, JI Ponant Convex, JI Ponant Concave) allows the creation and to play with light and shadow on the facades. Its interlocking system allows products of different shapes to be “mixed” on the same façade. The sidings are mechanically fixed to a secondary framework attached to the structure. This product requires an adjusted support or an adjustable framework. It is not possible to use it as ceiling application.



Article	Thickness (mm)	Width (mm)	Weight (kg/m <sup>2</sup> )
10708	1,00	300	11,12

## Technical characteristics

Standard lengths	From 200 to 6000 mm
Width	300 mm
Metal	S320 GD (other materials available on special request : stainless steel, aluminium...)
Coatings	Polyester, Plastisol... according to the Joris Ide Façade Colorflow Special coatings on request
Accessoires	Flashings

### Reference standards

Galvanized steel	EN 10346*
Coil coating	EN 10169* applied on galvanization
Tolerance	EN 508-1*
Thickness	Standard tolerances according to EN 10143*

### Flashings

Dimensions and details on request.

\* References set to European standard. National annex should be taken into account.

## Span tables Load type (kN/m<sup>2</sup>)

Calculations according to EN 1993-1-3\*

### ⇒ Pressure

	Thickness (mm)	Span (m)										
		1,00	1,20	1,40	1,60	1,80	2,00	2,20	2,40	2,60	2,80	3,00
Single	1,00	6,89	4,78	3,52	2,69	1,90	1,38	1,04	0,80	0,63	0,50	0,41
Double	1,00	2,70	2,01	1,55	1,24	1,01	0,84	0,71	0,61	0,52	0,45	0,39
Multi	1,00	3,25	2,42	1,88	1,50	1,23	1,02	0,87	0,74	0,64	0,56	0,49

Max length in production = 6 m  
hatch marks: the length exceeds the maximum production length that we could do

### ⇐ Suction

	Thickness (mm)	Span (m)										
		1,00	1,20	1,40	1,60	1,80	2,00	2,20	2,40	2,60	2,80	3,00
Single	1,00	3,53	2,45	1,80	1,34	0,94	0,68	0,51	0,40	0,31	0,25	0,20
Double	1,00	3,29	2,65	2,20	1,86	1,59	1,38	1,21	0,95	0,75	0,60	0,49
Multi	1,00	3,52	2,86	2,38	2,03	1,75	1,29	0,97	0,75	0,59	0,47	0,38

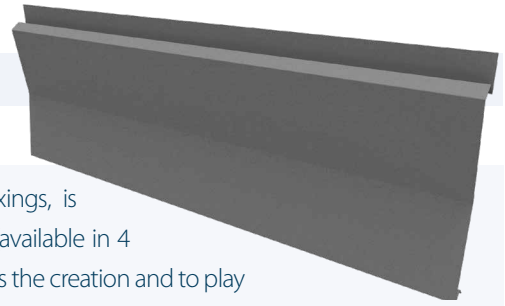
Max length in production = 6 m  
hatch marks: the length exceeds the maximum production length that we could do

\* References set to European standard. National annex should be taken into account.

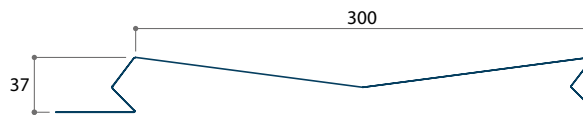
## Façade, Sidings

### Jl Ponant Concave

#### Jl Façade



This concept of façade cladding, with a flat appearance and hidden fixings, is designed for both new buildings and renovations. Its particular geometry (available in 4 versions: Jl Ponant W, Jl Ponant M, Jl Ponant Convex, Jl Ponant Concave) allows the creation and to play with light and shadow on the façades. Its interlocking system allows products of different shapes to be “mixed” on the façade. The sidings are mechanically fixed to a secondary framework attached to the structure. This product requires an adjusted support or an adjustable framework. It is not possible to use it as ceiling application.



Article	Thickness (mm)	Width (mm)	Weight (kg/m <sup>2</sup> )
10707	1,00	300	11,12

## Technical characteristics

Standard lengths	From 200 to 6000 mm
Width	300 mm
Metal	S320 GD (other materials available on special request : stainless steel, aluminium...)
Coatings	Polyester, Plastisol... according to the Joris Ide Façade Colorflow
Accessoires	Special coatings on request Flashings

### Reference standards

Galvanized steel	EN 10346*
Coil coating	EN 10169* applied on galvanization
Tolerance	EN 508-1*
Thickness	Standard tolerances according to EN 10143*

### Flashings

Dimensions and details on request

\* References set to European standard. National annex should be taken into account.

## Span tables Load type (kN/m<sup>2</sup>)

Calculations according to EN 1993-1-3\*

### ⇒ Pressure

	Thickness (mm)	Span (m)										
		1,00	1,20	1,40	1,60	1,80	2,00	2,20	2,40	2,60	2,80	3,00
Single	1,00	6,89	4,78	3,52	2,69	1,90	1,38	1,04	0,80	0,63	0,50	0,41
Double	1,00	2,70	2,01	1,55	1,24	1,01	0,84	0,71	0,61	0,52	0,45	0,39
Multi	1,00	3,25	2,42	1,88	1,50	1,23	1,02	0,87	0,74	0,64	0,56	0,49

Max length in production = 6 m  
hatch marks: the length exceeds the maximum production length that we could do

### ⇐ Suction

	Thickness (mm)	Span (m)										
		1,00	1,20	1,40	1,60	1,80	2,00	2,20	2,40	2,60	2,80	3,00
Single	1,00	3,53	2,45	1,80	1,34	0,94	0,68	0,51	0,40	0,31	0,25	0,20
Double	1,00	3,29	2,65	2,20	1,86	1,59	1,38	1,21	0,95	0,75	0,60	0,49
Multi	1,00	3,52	2,86	2,38	2,03	1,75	1,29	0,97	0,75	0,59	0,47	0,38

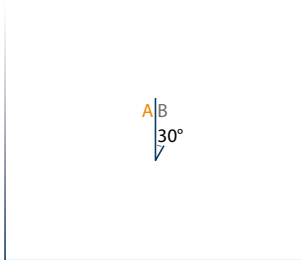
Max length in production = 6 m  
hatch marks: the length exceeds the maximum production length that we could do

\* References set to European standard. National annex should be taken into account.

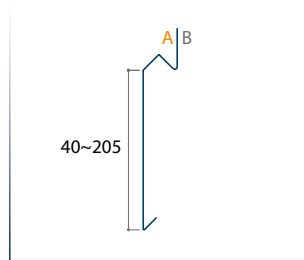
## Flashings (max length 4 m)

Contact our technical department to help you to choose the right flashing for your project.

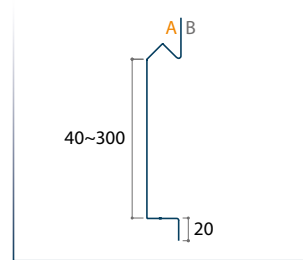
### Jl Grégale 300



GBP1

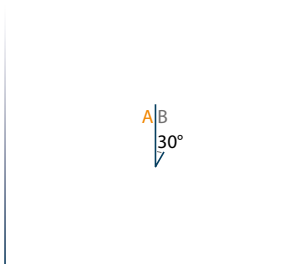


GBP2

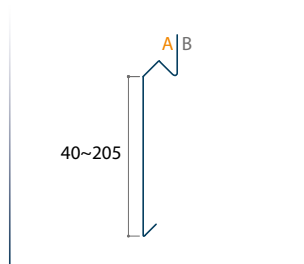


GBP3

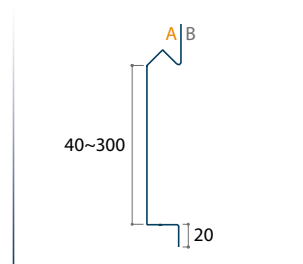
### Jl Grégale B300-B400-B500



GBP1

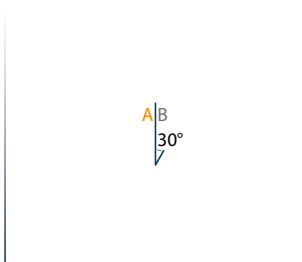


GBP2

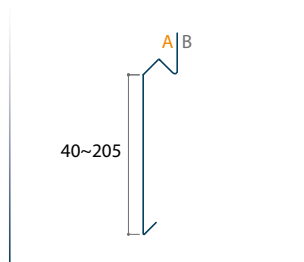


GBP3

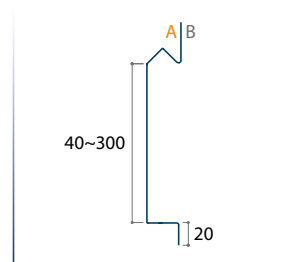
### Jl Grégale R300



GBP1



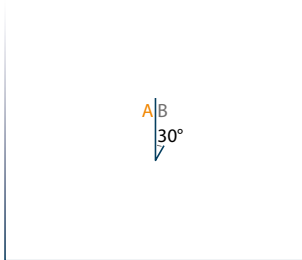
GBP2



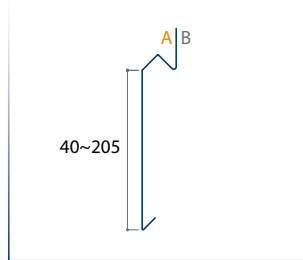
GBP3



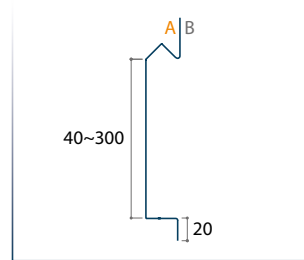
## Jl Grégale BR400-BR500



GBP1

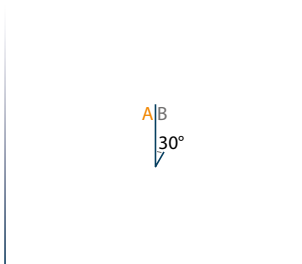


GBP2

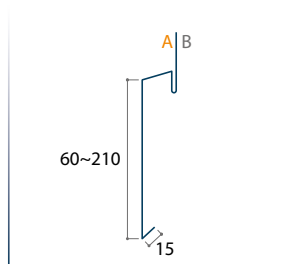


GBP3

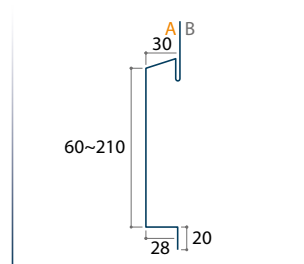
## Jl Albe 300



ABP1

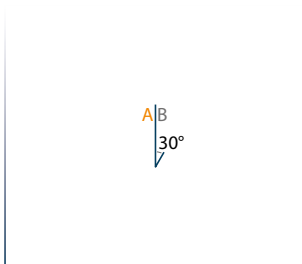


ABP2

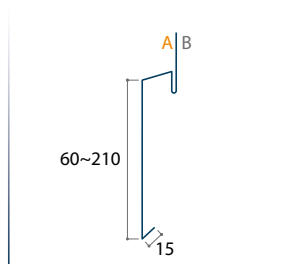


ABP3

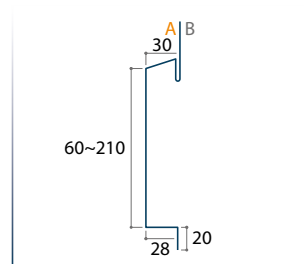
## Jl Albe 500



ABP1



ABP2



ABP3

# Cassettes

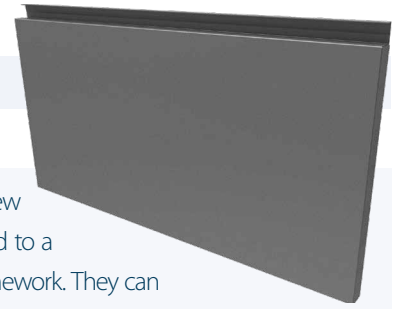




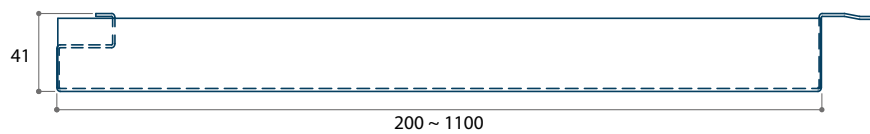
## Façade, Cassettes

### JI Boréas XLS

#### JI Façade



The JI Boréas XLS cassette is a flat cladding concept with hidden fixings designed for both new build and renovation. The JI Boréas XLS cassettes are fixed to a framework that is attached to a steel support, concrete or masonry. This product requires an adjusted or an adjustable framework. They can be installed horizontally or vertically, depending on the desired appearance. The special feature of this cassette is that it is equipped with a self-locking principle, which ensures that the longitudinal joints between the cassettes are always respected. Depending on the desired aesthetic, we can provide the JI Boreas XLS cassette with or without a hollow joint.



Article	Thickness (mm)	Weight (kg/m <sup>2</sup> )
7713	1,50	17,00

## Technical characteristics

Standard lengths	Until 2900 mm, beyond on request
Width	From 200 to 1100 mm
Metal	S320 GD (other materials available on special request : stainless steel, aluminium...)
Coatings	Polyester, Plastisol... according to the Joris Ide Façade Colorflow Special coatings on request
Accessoires	Flashings

### Reference standards

Galvanized steel	EN 10346*
Coil coating	EN 10169* applied on galvanization
Tolerance	EN 508-1*
Calculations/Tests	NF P 34-503 interpreted according to annexes D, E and N from 'Recommandations Professionnelles RAGE Bardages'
Thickness	Standard tolerances according to EN 10143*

\* References set to European standard. National annex should be taken into account.

## Span tables Load type (kN/m<sup>2</sup>)\*

### Pressure

Tables only for JI Boréas XLS 1100 mm

	Thickness (mm)	Span (m)										
		1,00	1,20	1,40	1,60	1,80	2,00	2,20	2,40	2,60	2,80	2,90
Single	1,50	5,63	3,91	2,61	1,75	1,23	0,90	0,67	0,52	0,41	0,33	0,29
Double	1,50	3,69	3,07	2,64	2,31	1,89	1,38	1,04	0,80	0,63	0,50	0,45

Max length in production = 2,9 m; beyond on request hatch marks: the length exceeds the maximum production length that we could do

### Suction

Tables only for JI Boréas XLS 1100 mm

	Thickness (mm)	Span (m)										
		1,00	1,20	1,40	1,60	1,80	2,00	2,20	2,40	2,60	2,80	2,90
Single	1,50	4,18	3,49	2,99	2,61	1,93	1,40	1,06	0,81	0,64	0,51	0,46
Double	1,50	0,94	0,65	0,48	0,37	0,29	0,23	0,19	0,16	0,14	0,12	0,11

Max length in production = 2,9 m; beyond on request hatch marks: the length exceeds the maximum production length that we could do

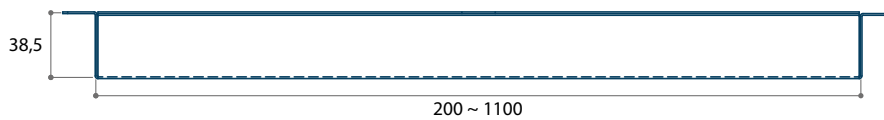
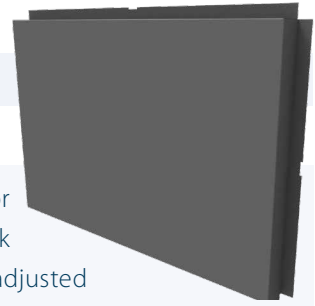
\* Span tables for other width available on request

## Façade, Cassettes

### Jl Tramontane

#### Jl Façade

The Jl Tramontane Cassette is a flat cladding concept with visible fixings designed for both new build and renovation. The Jl Tramontane cassettes are fixed to a framework that is attached to a steel support, concrete or masonry. This product requires an adjusted support or an adjustable framework. They can be installed in a staggered pattern. We can provide the Jl Tramontane cassette with a horizontal and vertical hollow joint.



Article	Thickness (mm)	Weight (kg/m <sup>2</sup> )
5549	1,50	17,00

## Technical characteristics

Standard lengths	Until 2900 mm, beyond on request
Width	From 200 to 1100 mm
Metal	S320 GD (other materials available on special request : stainless steel, aluminium...)
Coatings	Polyester, Plastisol... according to the Joris Ide Façade Colorflow Special coatings on request
Accessoires	Flashings

### Reference standards

Galvanized steel	EN 10346*
Coil coating	EN 10169* applied on galvanization
Tolerance	EN 508-1*
Thickness	Standard tolerances according to EN 10143*

\* References set to European standard. National annex should be taken into account.

## Span tables Load type (kN/m<sup>2</sup>)\*

Calculations according to EN 1993-1-3\*\*

### Pressure

Tables only for JI Tramontane 1100 mm

	Thickness (mm)	Span (m)										
		1,00	1,20	1,40	1,60	1,80	2,00	2,20	2,40	2,60	2,80	3,00
Single	1,50	5,16	3,59	2,63	1,97	1,39	1,01	0,76	0,58	0,46	0,37	0,30
Double	1,50	3,02	2,26	1,76	1,41	1,16	0,97	0,82	0,70	0,61	0,54	0,47
Multi	1,50	3,62	2,72	2,13	1,71	1,40	1,18	1,00	0,86	0,75	0,66	0,57

Max length in production = 2,9 m; beyond on request  
hatch marks: the length exceeds the maximum production length that we could do

### Suction

Tables only for JI Tramontane 1100 mm

	Thickness (mm)	Span (m)										
		1,00	1,20	1,40	1,60	1,80	2,00	2,20	2,40	2,60	2,80	3,00
Single	1,50	4,29	2,98	2,19	1,68	1,33	1,07	0,89	0,73	0,57	0,46	0,37
Double	1,50	5,16	3,59	2,63	2,02	1,59	1,29	1,07	0,90	0,76	0,66	0,57
Multi	1,50	6,46	4,48	3,29	2,52	1,99	1,61	1,33	1,12	0,95	0,82	0,70

Max length in production = 2,9 m; beyond on request  
hatch marks: the length exceeds the maximum production length that we could do

\* Span tables for other width available on request

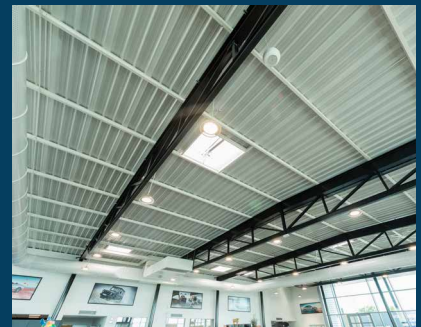
\*\* References set to European standard. National annex should be taken into account.



# JORISIDE

THE STEEL FUTURE

Joris Ide nv/sa  
Hille 174,  
8750 Zwevezele, Belgium  
☎ +32 (0)51 61 07 77  
☎ +32 (0)51 61 07 79  
✉ info@jorisode.be



With more than 30 years of experience, Joris Ide represents a guarantee of quality in the construction market. We provide solutions in all fields: acoustic, aesthetic, fire, thermal. Joris Ide, the essential partner for all your projects.

JORIS IDE IS  
PLANET  
PASSIONATE

