



J I SHIELD

The Joris Ide Built-Up Systems

MR139 / 08 JUL 2024

Index

JI Shield	1
Description on Thermal & Acoustic performances	4
JI Shield Built-up System	6
Roof 1	6
Roof 2	7
Roof 3	8
Wall Vertical 1	9
Wall Vertical 2	10
Wall Vertical 3	11
Wall Vertical 4	12
Wall Horizontal 1	13
Wall Horizontal 2	14
Wall Horizontal 3	15
Wall Horizontal 4	16

Joris Ide NV is not responsible for printing errors and / or any differences between the images in this catalogue and the final product delivered. Joris Ide NV reserves the right to modify the technical specifications at any time without prior notice. To make sure you have the latest version, we invite you to scan this QR code to download the latest version from our website www.jorisode.com.



Jl SHIELD

The Joris Ide Built-Up Systems

Manufacturing an extensive range of insulated and non-insulated metal roof and wall cladding products for more than 30 years, the Joris Ide Group is a hugely significant supplier of metal products to the construction industry across Europe.



As our research and development is at the centre of the success, we at Joris Ide developed the Jl Shield Systems.

In order to give the specialist contractor and architect. Easily understandable access to the appropriate construction details with test data leaving nothing to doubt.

We encapsulated a wealth of data, gathered over years of Joris Ide's extensive research and testing, with regard to acoustics, thermal, structural and airtightness to allow our customers ultimate confidence in the real performance of the system.

JI Shield Built-up System explained

As one of the largest European manufacturers of roof and wall systems, Joris Ide supply market leading built-up systems. Trapezoidal roof and walls systems (as well as sinusoidal walls systems) which are over-purlin constructions incorporating insulation, liner sheet, spacer and all other system components. The quality of materials and manufacture, combined with the high levels of performance achieved by the systems, makes JI Shield Systems the leading choice explaining why the corporate strapline is 'The Steel Future'.

System key benefits

The JI Shield System is guaranteed to provide a minimum useful life up to 25 years for each and every component supplied by Joris Ide and installed in the system. The Guarantee promises that the System supplied:

- Includes material that is and will remain fit for purpose up to 25 years in combination with the different coatings for the outer sheets available
- Will achieve the published structural, thermal, fire and acoustic performance when installed correctly and in compliance with the manufacturer's recommendations
- Includes materials that are recyclable following demolition
- Includes material or components manufactured under Quality Assured systems conforming to ISO 9001:2008 to ISO 14001:2004 Environmental Standards

Properties

The JI Shield system has been constructed so that it gives a multitude of options, based on aesthetic performance, bespoke thermal, fire and acoustic performances.

To contribute to the savings on energy, the JI Shield Systems provides excellent air tightness, with buildings featuring JI Shield roofs and walls systems achieving air permeability levels of just $10 \text{ m}^3/\text{h}/\text{m}^2$, a superb performance.

As well as highly efficient air tightness, the Psi values for linear details are equally thrifty and further energy saving options such as high reflective liner and integrated roof lights can be easily incorporated.

The growing library of BIM objects and CAD details have recently been complemented by a new Part L Design Check capability, which makes it even easier to use JI Shield Systems to meet the requirements of the entire building.

There are three main performance criteria that need to be considered for acoustic systems, which are: sound reduction; sound absorption and sound intensity. JI Shield Systems can provide solutions for all of the above and have been verified by extensive testing.

Contact the technical department for any specific requirements.

Fire resistance

Jl Shield Systems for walls are available rated to fire resistance performance of 120 minutes' integrity and 15 minutes' insulation. Wall systems have been tested at Exova Warrington Fire having inherent fire resistance performance of 120 minutes' integrity and 15 minutes' insulation. Refer details to our technical team for exact specifications and peace of mind.

Technical support

Joris Ide's technical assistance team is there to assist and guide the customer during the design and construction of the system to ensure its intended performance.

Next a detailed library of construction details, we can support you with:

- Load/span calculations of all structural components used
- Verification of U-values
- Simulations of different acoustic requirements
- Assistance on fire walls
- NBS Specifications



Description on Thermal & Acoustic performances

Systems	Outer sheet Profile	Outer sheet Gauge
Roof 1	JIC 32-167-1000	0,70 mm
Roof 2	JIC 32-200-1000 (MW5R)	0,70 mm
Roof 3	JIC 32-200-1000 (MW5RS)	0,70 mm
Vertical Wall 1	JIC 32-200-1000 (MW5C)	0,50 mm
Vertical Wall 2	JIC 32-167-1000	0,50 mm
Vertical Wall 3	JIC 50-200-1000	0,50 mm
Vertical Wall 4	JIC 19-76-990 (13.5-3)	0,50 mm
Horizontal Wall 1	JIC 32-200-1000 (MW5C)	0,70 mm
Horizontal Wall 2	JIC 32-167-1000	0,70 mm
Horizontal Wall 3	JIC 50-200-1000	0,70 mm
Horizontal Wall 4	JIC 19-76-990 (13.5-3)	0,70 mm

Roof systems

	U=0,48 (W/m ² K)				U=0,40 (W/m ² K)				U=0,25 (W/m ² K)				U=0,23 (W/m ² K)				U=0,21 (W/m ² K)			
	Bracket Depth (mm)	R _v (dB)	Fire Perf.	System Depth (mm)	Bracket Depth (mm)	R _v (dB)	Fire Perf.	System Depth (mm)	Bracket Depth (mm)	R _v (dB)	Fire Perf.	System Depth (mm)	Bracket Depth (mm)	R _v (dB)	Fire Perf.	System Depth (mm)	Bracket Depth (mm)	R _v (dB)	Fire Perf.	System Depth (mm)
1	100	41	-	133	120	41	-	153	185	45	-	218	200	45	-	233	220	45	-	253
2	100	41	-	133	120	41	-	153	185	45	-	218	200	45	-	233	220	45	-	253
3	100	41	-	133	120	41	-	153	185	45	-	218	200	45	-	233	220	45	-	253

Vertical Wall systems

	U=0,37 (W/m ² K)				U=0,35 (W/m ² K)				U=0,31 (W/m ² K)				U=0,30 (W/m ² K)				U=0,29 (W/m ² K)			
	Bracket Depth (mm)	R _v (dB)	Fire Perf.	System Depth (mm)	Bracket Depth (mm)	R _v (dB)	Fire Perf.	System Depth (mm)	Bracket Depth (mm)	R _v (dB)	Fire Perf.	System Depth (mm)	Bracket Depth (mm)	R _v (dB)	Fire Perf.	System Depth (mm)	Bracket Depth (mm)	R _v (dB)	Fire Perf.	System Depth (mm)
1					120	37	*	153					140	37	*	173				
2					120	37	*	153					140	37	*	173				
3					120	37	*	171					140	37	*	191				
4	120	37	*	140					140	37	*	160					150	37	*	170
1					200	39	*	233					220	39	*	253				
2					200	39	*	233	220	39	*	253								
3					200	39	*	251	220	39	*	271					240	39	*	291
4	200	39	*	220					220	39	*	240								

Horizontal Wall systems

	U=0,45 (W/m ² K)				U=0,43 (W/m ² K)				U=0,37 (W/m ² K)				U=0,36 (W/m ² K)				U=0,32 (W/m ² K)			
	Bracket Depth (mm)	R _v (dB)	Fire Perf.	System Depth (mm)	Bracket Depth (mm)	R _v (dB)	Fire Perf.	System Depth (mm)	Bracket Depth (mm)	R _v (dB)	Fire Perf.	System Depth (mm)	Bracket Depth (mm)	R _v (dB)	Fire Perf.	System Depth (mm)	Bracket Depth (mm)	R _v (dB)	Fire Perf.	System Depth (mm)
1					100	37	-	133					120	37	*	153				
2					100	37	-	133					120	37	*	153				
3					100	37	-	151					120	37	*	171				
4	100	37	-	120					120	37	*	140					140	40	*	160
1					160	40	*	193					180	42	*	213	200	42	*	233
2					160	40	*	193					180	42	*	213	200	42	*	233
3					160	40	*	211					180	42	*	231	200	42	*	251
4	160	40	*	180					180	42	*	200					200	42	*	220

Liner Profile	Liner Gauge	Full System name
JIC 32-200-1000 (MW5L)	0,70 mm	JI Shield Build-up System Roof 1
JIC 32-200-1000 (MW5L)	0,70 mm	JI Shield Build-up System Roof 2
JIC 32-200-1000 (MW5L)	0,70 mm	JI Shield Build-up System Roof 3
JIC 19-167-1000	0,40 mm	JI Shield Build-up System Wall V1
JIC 19-167-1000	0,40 mm	JI Shield Build-up System Wall V2
JIC 19-167-1000	0,40 mm	JI Shield Build-up System Wall V3
JIC 19-167-1000	0,40 mm	JI Shield Build-up System Wall V4
JIC 19-167-1000	0,40 mm	JI Shield Build-up System Wall H1
JIC 19-167-1000	0,40 mm	JI Shield Build-up System Wall H2
JIC 19-167-1000	0,40 mm	JI Shield Build-up System Wall H3
JIC 19-167-1000	0,40 mm	JI Shield Build-up System Wall H4

Bracket Depth (mm)	R _w (dB)	Fire Perf.	System Depth (mm)
U=0,19 (W/m² K)			
240	45	-	273
240	45	-	273
240	45	-	273
U=0,18 (W/m² K)			
260	47	-	293
260	47	-	293
260	47	-	293
U=0,16 (W/m² K)			
280	47	-	313
280	47	-	313
280	47	-	313
U=0,15 (W/m² K)			
300	47	-	333
300	47	-	333
300	47	-	333
U=0,14 (W/m² K)			
320	47	-	353
320	47	-	353
320	47	-	353

Bracket Depth (mm)	R _w (dB)	Fire Perf.	System Depth (mm)
U=0,28 (W/m² K)			
150	37	*	183
150	37	*	183
150	37	*	201
U=0,27 (W/m² K)			
160	37	*	193
160	37	*	211
160	37	*	180
U=0,26 (W/m² K)			
160	37	*	193
170	37	*	190
U=0,25 (W/m² K)			
170	39	*	203
170	39	*	203
170	39	*	221
U=0,24 (W/m² K)			
180	39	*	213
180	39	*	213
180	39	*	231
180	39	*	200

The thermal (U) and Acoustic (R_w) values presented on this document were estimated considering the system arrangement as below:

- Roof systems assume bracket spacing at 1,20m and bars/purlins spacing at 1,50m.
- Vertical wall systems assume bracket spacing at 1,167m and bars/purlins at 1,80m.
- Horizontal wall systems assume brackets/purlins spacing at 1,50m and bars at 1,167m

Bracket Depth (mm)	R _w (dB)	Fire Perf.	System Depth (mm)
U=0,31 (W/m² K)			
140	40	*	173
140	40	*	173
140	40	*	191

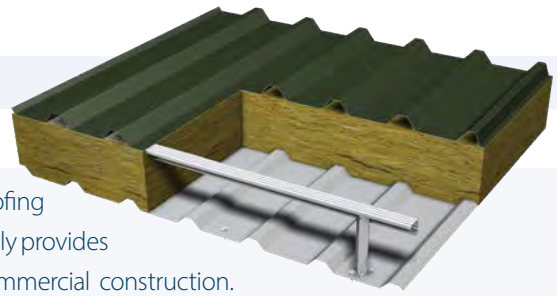
Fire Performances (According to BS476 Part 22):

* 120 minutes integrity / 15 minutes insulation

Bracket Depth (mm)	R _w (dB)	Fire Perf.	System Depth (mm)
U=0,20 (W/m² K)			
220	42	*	253
220	42	*	253
220	42	*	271
220	42	*	240

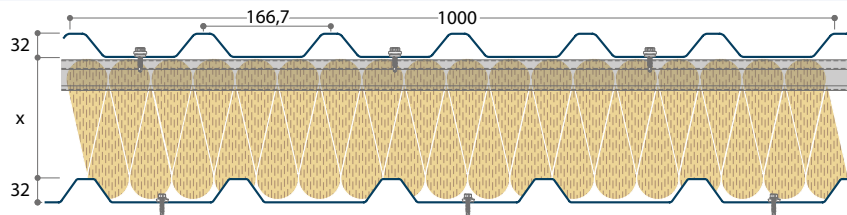
JI Shield Built-up System

Roof 1



The JI Shield Built-up System Roof 1 gives a warranted metal roofing system which features a 0,70 mm outer and 0,70 mm liner. The assembly provides a highly cost-effective roof system that is ideal for all types of commercial construction.

A unique benefit of the JI Shield Built-up System Roof 1 is the aesthetically pleasing 6 crowns JIC 32-167-1000 outer sheet.



Performances

Bracket Depth (mm)	R _w (dB)	Fire Perf.	System Depth (mm)	Bracket Depth (mm)	R _w (dB)	Fire Perf.	System Depth (mm)	Bracket Depth (mm)	R _w (dB)	Fire Perf.	System Depth (mm)	Bracket Depth (mm)	R _w (dB)	Fire Perf.	System Depth (mm)	Bracket Depth (mm)	R _w (dB)	Fire Perf.	System Depth (mm)
U=0,48 (W/m ² K)				U=0,40 (W/m ² K)				U=0,25 (W/m ² K)				U=0,23 (W/m ² K)				U=0,21 (W/m ² K)			
100	41	-	133	120	41	-	153	185	45	-	218	200	45	-	233	220	45	-	253
U=0,19 (W/m ² K)				U=0,18 (W/m ² K)				U=0,16 (W/m ² K)				U=0,15 (W/m ² K)				U=0,14 (W/m ² K)			
240	45	-	273	260	47	-	293	280	47	-	313	300	47	-	333	320	47	-	353

Standards and assumptions

- The Thermal (U) and Acoustic (RW) values presented on this document were estimated assuming bracket spacing at 1,20 m and bar/purlin spacing at 1,50 m
- The thermal performance of the profiled metal cladding construction detailed on this document has been calculated in accordance with BR443 (March 2006) and EN ISO 6946
- The acoustic performance of the profiled metal cladding construction detailed below has been predicted using a computer programme developed under a research contract and in accordance to the MCRMA recommendations

Components

Outer sheet

Profile	JIC 32-167-1000
Gauge	0,70 mm
Coatings	C200 leathergrain 200μ, Ultra 60μ

Liner

Profile	JIC 32-200-1000 (MW5L)
Gauge	0,70 mm
Coatings	BWLE

Insulation

Material	Glass Wool insulation
----------	-----------------------

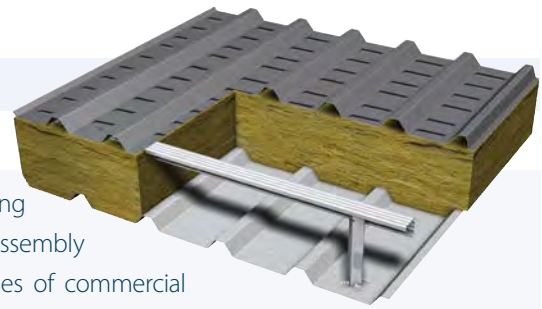
Other accessories

JI Bar & bracket, fixings, sealants and other approved Shield components
--

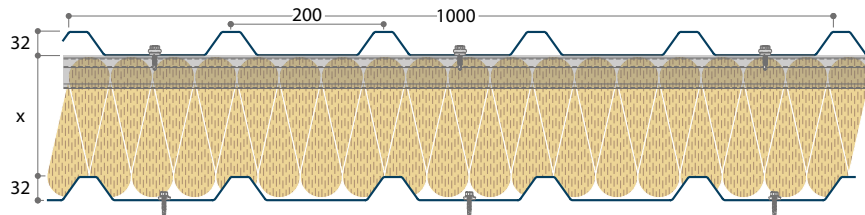
Please contact the Joris Ide Technical team for further installation drawings, product information or design assistance for your project

JI Shield Built-up System

Roof 2



The JI Shield Built-up System Roof 2 gives a warranted metal roofing system which features a 0,70 mm outer and 0,70 mm liner. The assembly provides a highly cost-effective roof system that is ideal for all types of commercial construction. The typical aspect for the JI Shield Built-up System Roof 2 is the robustness of the JIC 32-200-1000 (MW5R) outer sheet.



Performances

Bracket Depth (mm)	R _w (dB)	Fire Perf.	System Depth (mm)	Bracket Depth (mm)	R _w (dB)	Fire Perf.	System Depth (mm)	Bracket Depth (mm)	R _w (dB)	Fire Perf.	System Depth (mm)	Bracket Depth (mm)	R _w (dB)	Fire Perf.	System Depth (mm)	Bracket Depth (mm)	R _w (dB)	Fire Perf.	System Depth (mm)
U=0,48 (W/m ² K)				U=0,40 (W/m ² K)				U=0,25 (W/m ² K)				U=0,23 (W/m ² K)				U=0,21 (W/m ² K)			
100	41	-	133	120	41	-	153	185	45	-	218	200	45	-	233	220	45	-	253
U=0,19 (W/m ² K)				U=0,18 (W/m ² K)				U=0,16 (W/m ² K)				U=0,15 (W/m ² K)				U=0,14 (W/m ² K)			
240	45	-	273	260	47	-	293	280	47	-	313	300	47	-	333	320	47	-	353

Standards and assumptions

- The Thermal (U) and Acoustic (RW) values presented on this document were estimated assuming bracket spacing at 1,20 m and bar/purlin spacing at 1,50 m
- The thermal performance of the profiled metal cladding construction detailed on this document has been calculated in accordance with BR443 (March 2006) and EN ISO 6946
- The acoustic performance of the profiled metal cladding construction detailed below has been predicted using a computer programme developed under a research contract and in accordance to the MCRMA recommendations

Components

Outer sheet

Profile	JIC 32-200-1000 (MW5R)
Gauge	0,70 mm
Coatings	C200 leathergrain 200μ, Ultra 60μ

Liner

Profile	JIC 32-200-1000 (MW5L)
Gauge	0,70 mm
Coatings	BWLE

Insulation

Material	Glass Wool insulation
----------	-----------------------

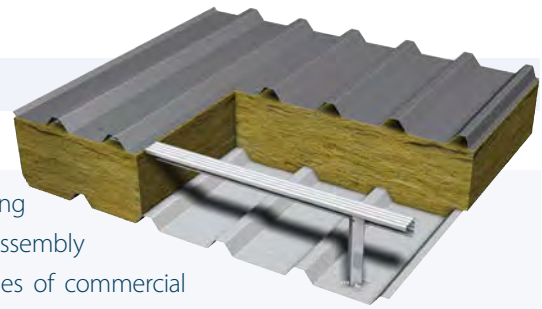
Other accessories

JI Bar & bracket, fixings, sealants and other approved Shield components
--

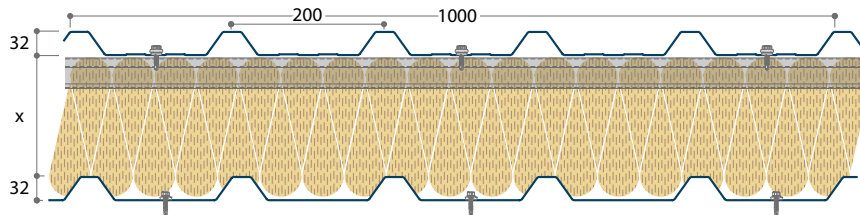
Please contact the Joris Ide Technical team for further installation drawings, product information or design assistance for your project

JI Shield Built-up System

Roof 3



The JI Shield Built-up System Roof 3 gives a warranted metal roofing system which features a 0,70 mm outer and 0,70 mm liner. The assembly provides a highly cost-effective roof system that is ideal for all types of commercial construction. The JI Shield Built-up System Roof 3 provides a robust JIC 32-200-1000 outer sheet with strength and aesthetically enhancing swages.



Performances

Bracket Depth (mm)	R _w (dB)	Fire Perf.	System Depth (mm)	Bracket Depth (mm)	R _w (dB)	Fire Perf.	System Depth (mm)	Bracket Depth (mm)	R _w (dB)	Fire Perf.	System Depth (mm)	Bracket Depth (mm)	R _w (dB)	Fire Perf.	System Depth (mm)	Bracket Depth (mm)	R _w (dB)	Fire Perf.	System Depth (mm)
U=0,48 (W/m ² K)				U=0,40 (W/m ² K)				U=0,25 (W/m ² K)				U=0,23 (W/m ² K)				U=0,21 (W/m ² K)			
100	41	-	133	120	41	-	153	185	45	-	218	200	45	-	233	220	45	-	253
U=0,19 (W/m ² K)				U=0,18 (W/m ² K)				U=0,16 (W/m ² K)				U=0,15 (W/m ² K)				U=0,14 (W/m ² K)			
240	45	-	273	260	47	-	293	280	47	-	313	300	47	-	333	320	47	-	353

Standards and assumptions

- The Thermal (U) and Acoustic (RW) values presented on this document were estimated assuming bracket spacing at 1,20 m and bar/purlin spacing at 1,50 m
- The thermal performance of the profiled metal cladding construction detailed on this document has been calculated in accordance with BR443 (March 2006) and EN ISO 6946
- The acoustic performance of the profiled metal cladding construction detailed below has been predicted using a computer programme developed under a research contract and in accordance to the MCRMA recommendations

Components

Outer sheet

Profile	32-200-1000 (MW5RS)
Gauge	0,70 mm
Coatings	C200 leathergrain 200μ, Ultra 60μ

Liner

Profile	JIC 32-200-1000 (MW5L)
Gauge	0,70 mm
Coatings	BWLE

Insulation

Material	Glass Wool insulation
----------	-----------------------

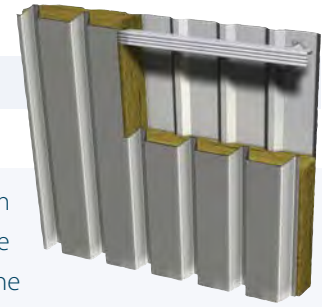
Other accessories

JI Bar & bracket, fixings, sealants and other approved Shield components
--

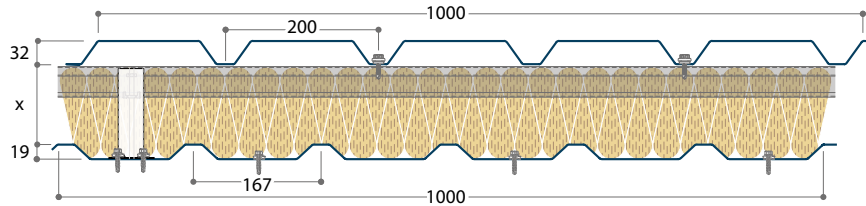
Please contact the Joris Ide Technical team for further installation drawings, product information or design assistance for your project

JI Shield Built-up System

Wall Vertical 1



The JI Shield Built-up System Wall Vertical 1 gives a warranted metal wall system which features a 0,50 mm outer and 0,40 mm liner. This assembly provides a highly cost-effective wall system that is ideal for all types of commercial construction. The typical aspect for the JI Shield Built-up System Wall Vertical 1 is the robustness of the JIC 32-200-1000 (MW5C) outer sheet.



Performances

Bracket Depth (mm)	R _w (dB)	Fire Perf.	System Depth (mm)	Bracket Depth (mm)	R _w (dB)	Fire Perf.	System Depth (mm)	Bracket Depth (mm)	R _w (dB)	Fire Perf.	System Depth (mm)	Bracket Depth (mm)	R _w (dB)	Fire Perf.	System Depth (mm)	Bracket Depth (mm)	R _w (dB)	Fire Perf.	System Depth (mm)
U=0,35 (W/m ² K)				U=0,30 (W/m ² K)				U=0,28 (W/m ² K)				U=0,26 (W/m ² K)				U=0,25 (W/m ² K)			
120	37	*	153	140	37	*	173	150	37	*	183	160	37	*	193	170	39	*	203
U=0,24 (W/m ² K)				U=0,21 (W/m ² K)				U=0,19 (W/m ² K)											
180	39	*	213	200	39	*	233	220	39	*	253								

* 120 minutes integrity / 15 minutes insulation (According to BS476 Part 22)

Standards and assumptions

- The Thermal (U) and Accoustic (RW) values presented on this document were estimated assuming bracket spacing at 1,167 m and bar/purlin spacing at 1,80 m
- The thermal performance of the profiled metal cladding construction detailed on this document has been calculated in accordance with BR443 (March 2006) and EN ISO 6946
- The acoustic performance of the profiled metal cladding construction detailed below has been predicted using a computer programme developed under a research contract and in accordance to the MCRMA recommendations

Components

Outer sheet

Profile	JIC 32-200-1000 (MW5RC)
Gauge	0,50 mm
Coatings	C200 leathergrain 200μ, Ultra 60μ

Liner

Profile	JIC 19-167-1000
Gauge	0,40 mm
Coatings	BWLE

Insulation

Material	Glass Wool insulation
----------	-----------------------

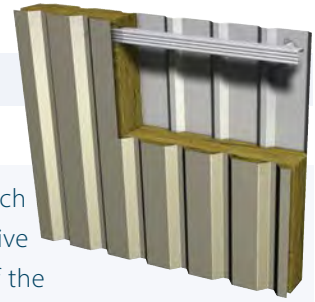
Other accessories

JI Bar & bracket, fixings, sealants and other approved Shield components
--

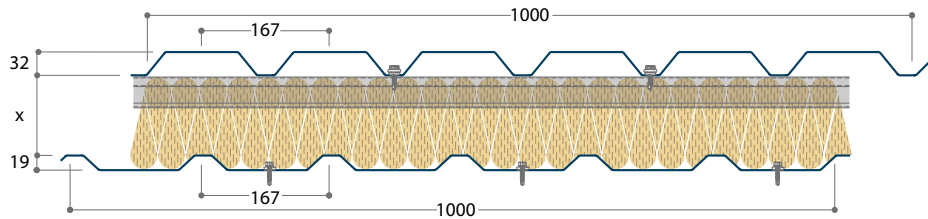
Please contact the Joris Ide Technical team for further installation drawings, product information or design assistance for your project

JI Shield Built-up System

Wall Vertical 2



The JI Shield Built-up System Wall Vertical 2 gives a warranted metal wall system which features a 0,50 mm outer and 0,40 mm liner. This assembly provides a highly cost-effective wall system that is ideal for all types of commercial construction. A unique benefit of the JI Shield Built-up System Wall Vertical 2 is the aesthetically pleasing 6 crowns JIC 32-167-1000 outer sheet.



Performances

Bracket Depth (mm)	R _w (dB)	Fire Perf.	System Depth (mm)	Bracket Depth (mm)	R _w (dB)	Fire Perf.	System Depth (mm)	Bracket Depth (mm)	R _w (dB)	Fire Perf.	System Depth (mm)	Bracket Depth (mm)	R _w (dB)	Fire Perf.	System Depth (mm)	Bracket Depth (mm)	R _w (dB)	Fire Perf.	System Depth (mm)
U=0,35 (W/m ² K)				U=0,30 (W/m ² K)				U=0,28 (W/m ² K)				U=0,27 (W/m ² K)				U=0,25 (W/m ² K)			
120	37	*	153	140	37	*	173	150	37	*	183	160	37	*	193	170	39	*	203
U=0,24 (W/m ² K)				U=0,21 (W/m ² K)				U=0,20 (W/m ² K)											
180	39	*	213	200	39	*	233	220	39	*	253								

* 120 minutes integrity / 15 minutes insulation (According to BS476 Part 22)

Standards and assumptions

- The Thermal (U) and Accoustic (RW) values presented on this document were estimated assuming bracket spacing at 1,167 m and bar/purlin spacing at 1,80 m
- The thermal performance of the profiled metal cladding construction detailed on this document has been calculated in accordance with BR443 (March 2006) and EN ISO 6946
- The acoustic performance of the profiled metal cladding construction detailed below has been predicted using a computer programme developed under a research contract and in accordance to the MCRMA recommendations

Components

Outer sheet

Profile	JIC 32-167-1000
Gauge	0,50 mm
Coatings	C200 leathergrain 200μ, Ultra 60μ

Liner

Profile	JIC 19-167-1000
Gauge	0,40 mm
Coatings	BWLE

Insulation

Material	Glass Wool insulation
----------	-----------------------

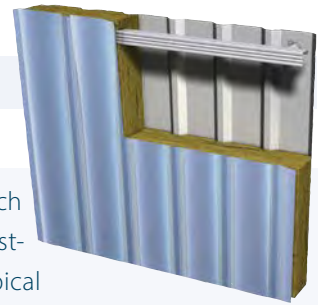
Other accessories

JI Bar & bracket, fixings, sealants and other approved Shield components

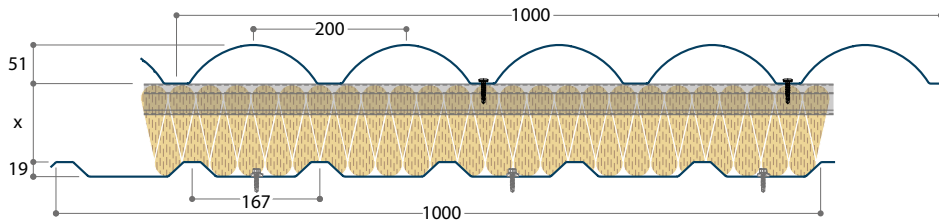
Please contact the Joris Ide Technical team for further installation drawings, product information or design assistance for your project

JI Shield Built-up System

Wall Vertical 3



The JI Shield Built-up System Wall Vertical 3 gives a warranted metal wall system which features a 0,50 mm outer and 0,40 mm liner. This assembly provides a highly cost-effective wall system that is ideal for all types of commercial construction. The typical aspect for this system is the aesthetical design of the JIC 50-200-1000 outer sheet.



Performances

Bracket Depth (mm)	R _w (dB)	Fire Perf.	System Depth (mm)	Bracket Depth (mm)	R _w (dB)	Fire Perf.	System Depth (mm)	Bracket Depth (mm)	R _w (dB)	Fire Perf.	System Depth (mm)	Bracket Depth (mm)	R _w (dB)	Fire Perf.	System Depth (mm)	Bracket Depth (mm)	R _w (dB)	Fire Perf.	System Depth (mm)
U=0,35 (W/m ² K)				U=0,30 (W/m ² K)				U=0,28 (W/m ² K)				U=0,27 (W/m ² K)				U=0,25 (W/m ² K)			
120	37	*	171	140	37	*	191	150	37	*	201	160	37	*	211	170	39	*	221
U=0,24 (W/m ² K)				U=0,21 (W/m ² K)				U=0,20 (W/m ² K)				U=0,18 (W/m ² K)							
180	39	*	231	200	39	*	251	220	39	*	271	240	39	*	291				

* 120 minutes integrity / 15 minutes insulation (According to BS476 Part 22)

Standards and assumptions

- The Thermal (U) and Accoustic (RW) values presented on this document were estimated assuming bracket spacing at 1,167 m and bar/purlin spacing at 1,80 m
- The thermal performance of the profiled metal cladding construction detailed on this document has been calculated in accordance with BR443 (March 2006) and EN ISO 6946
- The acoustic performance of the profiled metal cladding construction detailed below has been predicted using a computer programme developed under a research contract and in accordance to the MCRMA recommendations

Components

Outer sheet

Profile	JIC 50-200-1000
Gauge	0,50 mm
Coatings	C200 leathergrain 200μ

Liner

Profile	JIC 19-167-1000
Gauge	0,40 mm
Coatings	BWLE

Insulation

Material	Glass Wool insulation
----------	-----------------------

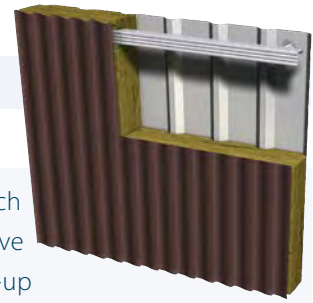
Other accessories

JI Bar & bracket, fixings, sealants and other approved Shield components

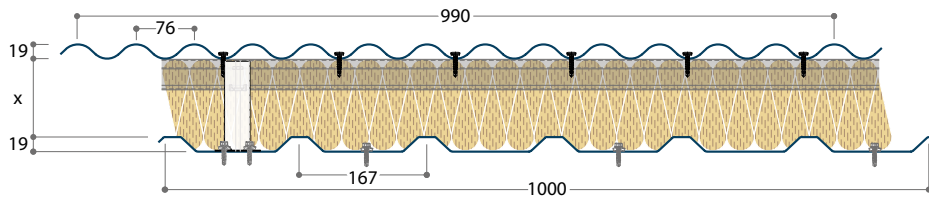
Please contact the Joris Ide Technical team for further installation drawings, product information or design assistance for your project

JI Shield Built-up System

Wall Vertical 4



The JI Shield Built-up System Wall Vertical 4 gives a warranted metal wall system which features a 0,50 mm outer and 0,40 mm liner. This assembly provides a highly cost-effective wall system that is ideal for all types of commercial construction. The JI Shield Built-up System Wall Vertical 4 differentiates itself by the slim sinusoidal outer sheet.



Performances

Bracket Depth (mm)	R _w (dB)	Fire Perf.	System Depth (mm)	Bracket Depth (mm)	R _w (dB)	Fire Perf.	System Depth (mm)	Bracket Depth (mm)	R _w (dB)	Fire Perf.	System Depth (mm)	Bracket Depth (mm)	R _w (dB)	Fire Perf.	System Depth (mm)	Bracket Depth (mm)	R _w (dB)	Fire Perf.	System Depth (mm)
U=0,37 (W/m ² K)				U=0,31 (W/m ² K)				U=0,29 (W/m ² K)				U=0,27 (W/m ² K)				U=0,26 (W/m ² K)			
120	37	*	140	140	37	*	160	150	37	*	170	160	37	*	180	170	37	*	190
U=0,24 (W/m ² K)				U=0,22 (W/m ² K)				U=0,20 (W/m ² K)											
180	39	*	200	200	39	*	220	220	39	*	240								

* 120 minutes integrity / 15 minutes insulation (According to BS476 Part 22)

Standards and assumptions

- The Thermal (U) and Accoustic (RW) values presented on this document were estimated assuming bracket spacing at 1,167 m and bar/purlin spacing at 1,80 m
- The thermal performance of the profiled metal cladding construction detailed on this document has been calculated in accordance with BR443 (March 2006) and EN ISO 6946
- The acoustic performance of the profiled metal cladding construction detailed below has been predicted using a computer programme developed under a research contract and in accordance to the MCRMA recommendations

Components

Outer sheet

Profile	JIC 19-76-990 (13.5-3)
Gauge	0,50 mm
Coatings	C200 leathergrain 200μ, Ultra 60μ

Liner

Profile	JIC 19-167-1000
Gauge	0,40 mm
Coatings	BWLE

Insulation

Material	Glass Wool insulation
----------	-----------------------

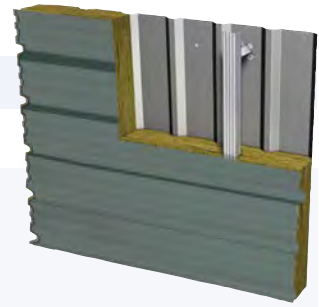
Other accessories

JI Bar & bracket, fixings, sealants and other approved Shield components
--

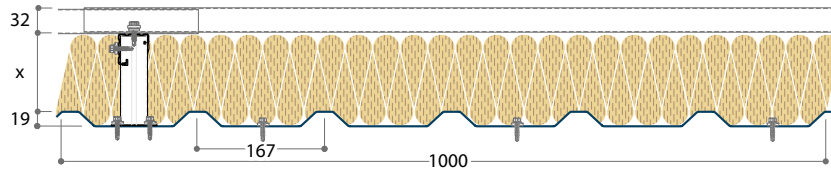
Please contact the Joris Ide Technical team for further installation drawings, product information or design assistance for your project

JI Shield Built-up System

Wall Horizontal 1



The JI Shield Built-up System Wall Horizontal 1 gives a warranted metal wall system which features a 0,70 mm outer and 0,40 mm liner. This assembly provides a highly cost-effective wall system that is ideal for all types of commercial construction. The typical aspect for the JI Shield Built-up System Wall Horizontal 1 is the robustness of the JIC 32-200-1000 (MW5C) outer sheet.



Performances

Bracket Depth (mm)	R _w (dB)	Fire Perf.	System Depth (mm)	Bracket Depth (mm)	R _w (dB)	Fire Perf.	System Depth (mm)	Bracket Depth (mm)	R _w (dB)	Fire Perf.	System Depth (mm)	Bracket Depth (mm)	R _w (dB)	Fire Perf.	System Depth (mm)	Bracket Depth (mm)	R _w (dB)	Fire Perf.	System Depth (mm)
U=0,43 (W/m ² K)				U=0,36 (W/m ² K)				U=0,31 (W/m ² K)				U=0,27 (W/m ² K)				U=0,24 (W/m ² K)			
100	37	-	133	120	37	*	153	140	40	*	173	160	40	*	193	180	42	*	213
U=0,22 (W/m ² K)				U=0,20 (W/m ² K)															
200	42	*	233	220	42	*	253												

* 120 minutes integrity / 15 minutes insulation (According to BS476 Part 22)

Standards and assumptions

- The thermal (U) and Acoustic (R_w) values presented on this document were estimated assuming brackets/purlins spacing at 1,50 m and bars at 1,167 m
- The thermal performance of the profiled metal cladding construction detailed on this document has been calculated in accordance with BR443 (March 2006) and EN ISO 6946
- The acoustic performance of the profiled metal cladding construction detailed below has been predicted using a computer programme developed under a research contract and in accordance to the MCRMA recommendations

Components

Outer sheet

Profile	JIC 32-200-1000 (MW5RC)
Gauge	0,70 mm
Coatings	C200 leathergrain 200μ, Ultra 60μ

Liner

Profile	JIC 19-167-1000
Gauge	0,40 mm
Coatings	BWLE

Insulation

Material	Glass Wool insulation
----------	-----------------------

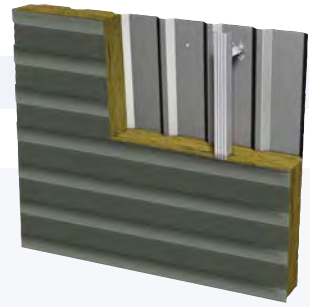
Other accessories

JI Bar & bracket, fixings, sealants and other approved Shield components

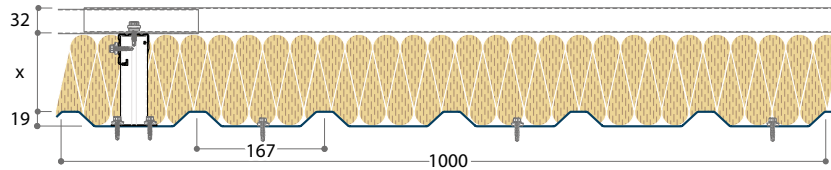
Please contact the Joris Ide Technical team for further installation drawings, product information or design assistance for your project

JI Shield Built-up System

Wall Horizontal 2



The JI Shield Built-up System Wall Horizontal 2 gives a warranted metal wall system which features a 0,70 mm outer and 0,40 mm liner. This assembly provides a highly cost-effective wall system that is ideal for all types of commercial construction. A unique benefit of the JI Shield Built-up System Wall Horizontal 2 is the aesthetically pleasing 6 crowns JIC 32-167-1000 outer sheet.



Performances

Bracket Depth (mm)	R _w (dB)	Fire Perf.	System Depth (mm)	Bracket Depth (mm)	R _w (dB)	Fire Perf.	System Depth (mm)	Bracket Depth (mm)	R _w (dB)	Fire Perf.	System Depth (mm)	Bracket Depth (mm)	R _w (dB)	Fire Perf.	System Depth (mm)	Bracket Depth (mm)	R _w (dB)	Fire Perf.	System Depth (mm)
U=0,43 (W/m ² K)				U=0,36 (W/m ² K)				U=0,31 (W/m ² K)				U=0,27 (W/m ² K)				U=0,24 (W/m ² K)			
100	37	-	133	120	37	*	153	140	40	*	173	160	40	*	193	180	42	*	213
U=0,22 (W/m ² K)				U=0,20 (W/m ² K)															
200	42	*	233	220	42	*	253												

* 120 minutes integrity / 15 minutes insulation (According to BS476 Part 22)

Standards and assumptions

- The Thermal (U) and Acoustic (RW) values presented on this document were estimated assuming bracket spacing at 1,20 m and bar/purlin spacing at 1,50 m
- The thermal performance of the profiled metal cladding construction detailed on this document has been calculated in accordance with BR443 (March 2006) and EN ISO 6946
- The acoustic performance of the profiled metal cladding construction detailed below has been predicted using a computer programme developed under a research contract and in accordance to the MCRMA recommendations

Components

Outer sheet

Profile	JIC 32-167-1000
Gauge	0,70 mm
Coatings	C200 leathergrain 200μ, Ultra 60μ

Liner

Profile	JIC 19-167-1000
Gauge	0,40 mm
Coatings	BWLE

Insulation

Material	Glass Wool insulation
----------	-----------------------

Other accessories

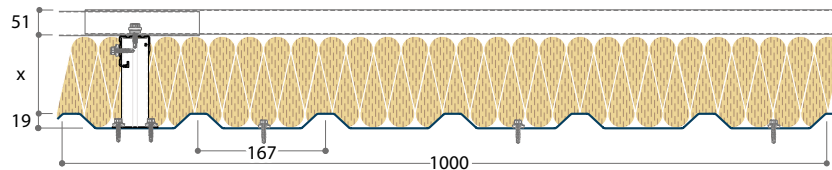
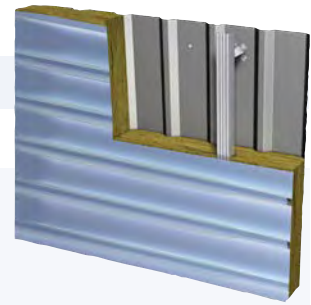
JI Bar & bracket, fixings, sealants and other approved Shield components

Please contact the Joris Ide Technical team for further installation drawings, product information or design assistance for your project

JI Shield Built-up System

Wall Horizontal 3

The JI Shield Built-up System Wall Horizontal 3 gives a warranted metal wall system which features a 0,70 mm outer and 0,40 mm liner. This assembly provides a highly cost-effective wall system that is ideal for all types of commercial construction. The typical aspect for this system is the aesthetical design of the JIC 50-200-1000 outer sheet.



Performances

Bracket Depth (mm)	R _w (dB)	Fire Perf.	System Depth (mm)	Bracket Depth (mm)	R _w (dB)	Fire Perf.	System Depth (mm)	Bracket Depth (mm)	R _w (dB)	Fire Perf.	System Depth (mm)	Bracket Depth (mm)	R _w (dB)	Fire Perf.	System Depth (mm)	Bracket Depth (mm)	R _w (dB)	Fire Perf.	System Depth (mm)
U=0,43 (W/m ² K)				U=0,36 (W/m ² K)				U=0,31 (W/m ² K)				U=0,27 (W/m ² K)				U=0,24 (W/m ² K)			
100	37	-	151	120	37	*	171	140	40	*	191	160	40	*	211	180	42	*	231
U=0,22 (W/m ² K)				U=0,20 (W/m ² K)															
200	42	*	251	220	42	*	271												

* 120 minutes integrity / 15 minutes insulation (According to BS476 Part 22)

Standards and assumptions

- The thermal (U) and Acoustic (R_w) values presented on this document were estimated assuming brackets/purlins spacing at 1,50 m and bars at 1,167 m
- The thermal performance of the profiled metal cladding construction detailed on this document has been calculated in accordance with BR443 (March 2006) and EN ISO 6946
- The acoustic performance of the profiled metal cladding construction detailed below has been predicted using a computer programme developed under a research contract and in accordance to the MCRMA recommendations

Components

Outer sheet

Profile	JIC 50-200-1000
Gauge	0,70 mm
Coatings	C200 leathergrain 200μ, Ultra 60μ

Liner

Profile	JIC 19-167-1000
Gauge	0,40 mm
Coatings	BWLE

Insulation

Material	Glass Wool insulation
----------	-----------------------

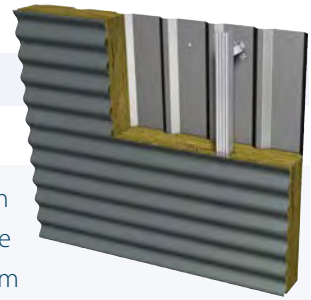
Other accessories

JI Bar & bracket, fixings, sealants and other approved Shield components

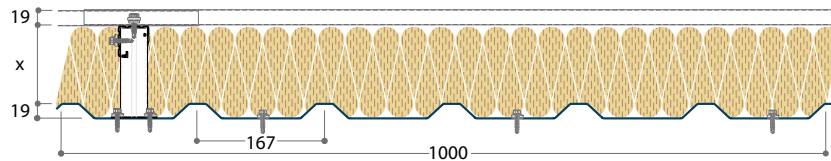
Please contact the Joris Ide Technical team for further installation drawings, product information or design assistance for your project

JI Shield Built-up System

Wall Horizontal 4



The JI Shield Built-up System Wall Horizontal 4 gives a warranted metal wall system which features a 0,70 mm outer and 0,40 mm liner. This assembly provides a highly cost-effective wall system that is ideal for all types of commercial construction. The JI Shield Built-up System Wall Horizontal 4 differentiates itself by the slim sinusoidal outer sheet.



Performances

Bracket Depth (mm)	R _w (dB)	Fire Perf.	System Depth (mm)	Bracket Depth (mm)	R _w (dB)	Fire Perf.	System Depth (mm)	Bracket Depth (mm)	R _w (dB)	Fire Perf.	System Depth (mm)	Bracket Depth (mm)	R _w (dB)	Fire Perf.	System Depth (mm)	Bracket Depth (mm)	R _w (dB)	Fire Perf.	System Depth (mm)				
U=0,45 (W/m ² K)				U=0,37 (W/m ² K)				U=0,32 (W/m ² K)				U=0,28 (W/m ² K)				U=0,25 (W/m ² K)							
100	37	-	120	120	37	*	140	140	40	*	160	160	40	*	180	180	42	*	200				
U=0,22 (W/m ² K)				U=0,20 (W/m ² K)																			
200	42	*	220	220	42	*	240																

* 120 minutes integrity / 15 minutes insulation (According to BS476 Part 22)

Standards and assumptions

- The thermal (U) and Acoustic (R_w) values presented on this document were estimated assuming brackets/purlins spacing at 1,50 m and bars at 1,167 m
- The thermal performance of the profiled metal cladding construction detailed on this document has been calculated in accordance with BR443 (March 2006) and EN ISO 6946
- The acoustic performance of the profiled metal cladding construction detailed below has been predicted using a computer programme developed under a research contract and in accordance to the MCRMA recommendations

Components

Outer sheet

Profile	JIC 19-76-990 (13.5-3)
Gauge	0,70 mm
Coatings	C200 leathergrain 200μ, Ultra 60μ

Liner

Profile	JIC 19-167-1000
Gauge	0,40 mm
Coatings	BWLE

Insulation

Material	Glass Wool insulation
----------	-----------------------

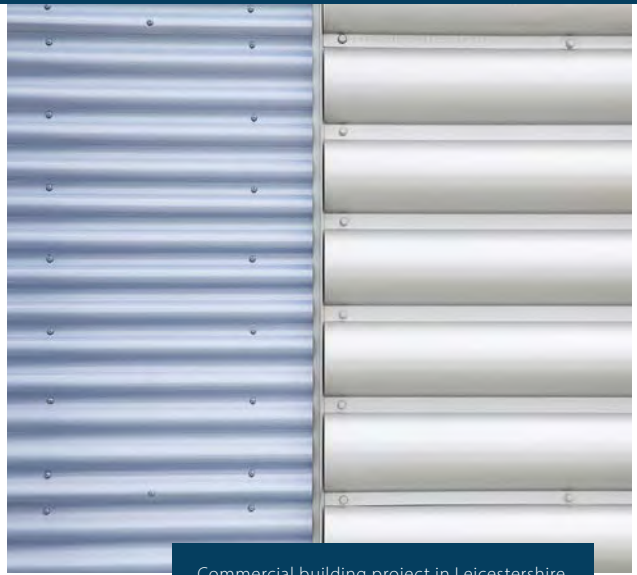
Other accessories

JI Bar & bracket, fixings, sealants and other approved Shield components
--

Please contact the Joris Ide Technical team for further installation drawings, product information or design assistance for your project



Integrated building project in South Yorkshire.



Commercial building project in Leicestershire.



A long-lasting solution for your building.



JIC 32-200-1000, Ultra 60 μ coating.



JORISIDE

THE STEEL FUTURE

Joris Ide Ltd.

A9, Elmbridge Court,
Gloucester GL3 1JZ, United Kingdom

☎ +44 (0)1452 412 069

☎ +44 (0)1452 358 025

✉ sales@joriside.co.uk

Joris Ide nv/sa

Hille 174,
8750 Zwevezele, Belgium

☎ +32 (0)51 61 07 77

☎ +32 (0)51 61 07 79

✉ info@joriside.be



With more than 30 years of experience, Joris Ide represents a guarantee of quality in the construction market. We provide solutions in all fields: acoustic, aesthetic, fire, thermal. Joris Ide, the essential partner for all your projects.

JORIS IDE IS
PLANET
PASSIONATE

