



INEOS

DISINFECT TO PROTECT

THE FUTURE OF HAND SANITISING

Discover your new INEOS Sanitiser
Dispenser Professional (1500ml)

Instruction Manual



CONFIDENCE INSIDE

Designed uniquely for INEOS Hygienics Hand Sanitiser, with 75% ethanol that kills 99.9% of bacteria and viruses



TRUSTED BY
DOCTORS



DERMATOLOGICALLY
TESTED



PURE
FORMULA

CONTENTS

- 3 Product features
- 4 Important safety and handling information
- 6 Product specifications
- 7 EU Declaration of Conformity
- 8 Box contents
- 9 Dispenser parts
- 10 Setting up the dispenser: Inserting the batteries
- 11 Setting up the dispenser: Inserting the cartridges
- 12 Powering the battery and cartridge replacement
- 13 Recycling, replacements and returns
- 14 Adjusting the settings
- 15 Key to lights
- 16 Troubleshooting your dispenser
- 17 Cleaning the dispenser
- 18 Wall mounting
- 20 Floor stand assembly
- 21 Setting up the stand



PRODUCT FEATURES



SWISS-
ENGINEERED



HYGIENIC
TOUCHLESS
TECHNOLOGY



ROBUST
ALUMINIUM
FRAME



RECHARGEABLE
LITHIUM-ION
BATTERY



ADJUSTABLE
DOSAGE
SETTINGS



SIMPLE
CARTRIDGE
REPLACEMENT

IMPORTANT SAFETY AND HANDLING INFORMATION

Before using your INEOS Sanitiser Dispenser, cartridges or accompanying accessories, please read the important safety information below.

This device is not intended for use by persons (including children) with reduced physical, sensory or mental capabilities, or lack of experience and knowledge, unless they have been given supervision or instruction concerning the use of the dispenser by a person responsible for their safety.

The device can be used by children from 8+ years and persons with reduced physical, sensory or mental capabilities or lack of experience and knowledge, if they have been given supervision or instruction concerning the use of the dispenser in a safe way and understand the hazards involved. Children should be supervised so they do not play with the device.

SAFETY, STORAGE AND HANDLING OF THE INEOS SANITISER DISPENSER, BATTERIES, CARTRIDGES AND ACCESSORIES

The INEOS Sanitiser Dispenser has been designed for indoor use only. Please do not use the dispenser, cartridges or any accessories (including batteries) outside. Avoid exposing your dispenser, accompanying batteries, cartridges or accessories to very hot or cold temperatures.

STORAGE

- Store the dispenser, cartridges, and accessories (wall mount, floor stand or spare batteries) in well ventilated, cool and dry places. Extreme temperatures or humidity could shorten the life of the rechargeable batteries and dispenser and they could also compromise on their safety. The consistency of the hand sanitiser contained within the cartridges can also be affected.
- Do not store your dispenser battery(s) with metal objects such as keys, coins or jewellery – as metal objects coming into contact with the battery terminals may cause a fire. In addition, the supply terminals of the battery are not to be short-circuited.

HANDLING AND SAFETY

- ONLY use INEOS Hygienics sanitiser cartridges with your INEOS Sanitiser Dispenser.
- Do not attempt to refill cartridges yourself or make any other modifications to the cartridges.
- Do not insert any foreign objects into your dispenser, cartridges, accessories or battery.
- Do not modify or attempt to repair your dispenser, cartridge, accompanying battery or any of the accessories except as indicated in this manual for instructions of use and care.
- Do not modify, drop, disassemble, puncture, shred, microwave, incinerate, bend, deform, or make any other alterations to your dispenser, battery or accompanying cartridges and/or accessories. Do not immerse in water.

IMPORTANT SAFETY AND HANDLING INFORMATION

- Do not use your dispenser, cartridges, battery or accessories if they have been in any way damaged, for example if cracked, punctured, bent or harmed by the hand sanitiser or any other liquid.
- Cleaning and device maintenance should not be carried out by children without supervision.
- Do not expose the dispenser to fire or temperatures greater than 130°C; exposure to these temperatures or to flames may cause explosion. The dispensers cannot be used in the presence of explosive fumes, explosive dust or other explosive chemicals. Sparks in such areas could cause an explosion or fire resulting in serious injury, death or damage to property.
- Caution: the floor stand accessory (sold separately) is heavy; handle with care.

WARNING



Only use INEOS Sanitiser Dispenser Rechargeable Lithium-ion Polymer Battery Model: IP35661 14-3P in your device. Using a non-INEOS Sanitiser Dispenser battery could damage your device.

INEOS HYGIENICS ALCOHOL-BASED HAND GEL - SAFETY INFORMATION

DIRECTIONS FOR USE: Rub a small amount onto dry hands. Allow to dry completely.

ACTIVE INGREDIENT: Ethanol (75g/100g). Based on WHO approved formulation.

DANGER:

- Highly flammable liquid and vapour.
- Causes serious eye irritation.
- Keep away from heat, hot surfaces, sparks, open flames and other ignition sources.
- No smoking.
- IF IN EYES: rinse cautiously with water for several minutes.
- If eye irritation persists: get medical advice/attention.
- Under no circumstances should INEOS Hygienics products be swallowed.
- IF SWALLOWED: seek medical advice immediately.
- Keep out of reach of children.
- Do not attempt to refill cartridges yourself or make any other modifications to the cartridges.
- Use biocides carefully. Always read the label and product information before use. The safety information can be found on the label or the safety data sheet.

DANGER



PRODUCT SPECIFICATIONS

DISPENSER SPECIFICATION

Please find below your dispenser specifications:

SPECIFICATION	PROFESSIONAL SANITISER DISPENSER
Battery	Capacity: 10800mAh, 39.96Wh Input: 5 V, 2 A Output: 3.7 V, 2 A In case of replacement only use model number IP3566114-3P (please contact your seller) Recycling: See page 19 for recycling guidelines
Charging	USB-C Port 5 V, 2 A
Dimensions	324.6mm x 207.9mm x 105mm
Communication	Radio-frequency identification (RFID) is used for communication between the dispenser and cartridge
Weight	2.75 kg (without battery and cartridge)
Operating temperature	5-40°C
Storage temperature	-10-60°C
Sound level performance	< 70 dB(A)

EU DECLARATION OF CONFORMITY

Manufacturer: INEOS Hygienics Limited

Address: School Aycliffe Lane, Newton Aycliffe, Co. Durham, DL5 6EA, UK

Product identification: INEOS Sanitiser Dispenser Home/Professional in conjunction with INEOS Sanitiser Cartridges.

This Declaration of Conformity is issued under the sole responsibility of the manufacturer. The product described above in the form as delivered is in conformity with the provisions of the following European Directives:

2014/53/EU Radio equipment (RED)
2011/65/EC Restriction of hazardous substances (RoHS)

Conformity to the Directives is assured through the application of the following standards:

	RADIO EQUIPMENT	MAIN PRODUCT FUNCTION
Safety		EN 60335-1:2012 + AC:2014 + A11:2014 + A13:2017 + A1:2019 + A14:2019 + A2:2019 EN 62233:2008
EMC	EN 301489-1 V2.2.3 EN 301489-3 V2.1.1	EN 61000-6-3:2007 + A1:2011 EN 61000-6-2:2005 EN 55014-1:2017 EN 55014-2:2015 EN 55014-2:2006 + A1:2007 + A2:2009
Radio Spectrum	EN 300 330 V2.1.1	
RoHS		EN 63000:2018

INEOS Hygienics Limited
Newton Aycliffe, November 05, 2020



George Ratcliffe
Chief Operating Officer

This declaration certifies the conformity to the specified directives but contains no assurance of properties. The safety documentation accompanying the product shall be considered in detail.

BOX CONTENTS

DISPENSER BOX CONTENTS

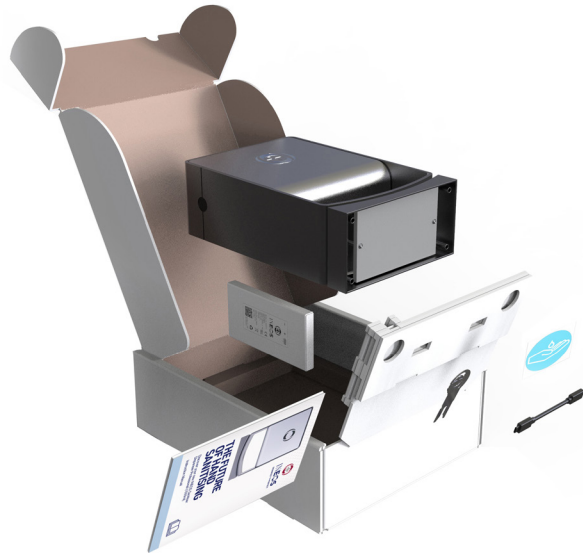
- 1 x Professional dispenser
- 1 x Lithium-ion battery
- 1 x USB-C charging cable
- 1 x Instruction manual
- 1 x Drip tray sticker
- 1 x Dispenser locking key

WALL MOUNT BOX CONTENTS

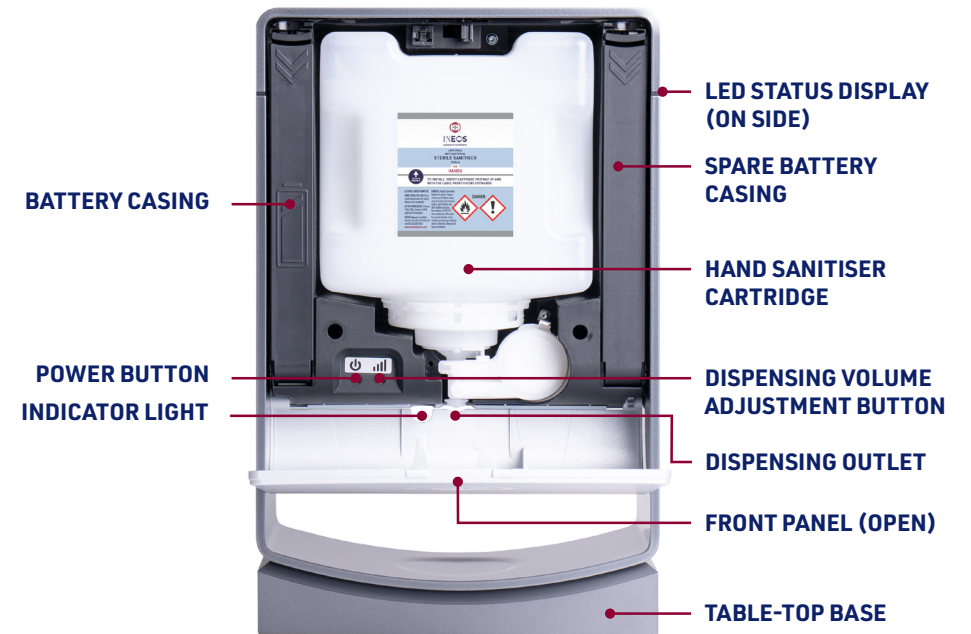
- 1 x Wall mount professional
- 4 x Chipboard screw 3.5x35
- 4 x Wall plug UX5
- 3 x Screw 30x12
(spare dispenser unit screws)
- 1 x Torx key T10

BATTERY BOX CONTENTS

- 1 x Rechargeable lithium-ion battery



DISPENSER PARTS



SETTING UP THE DISPENSER: INSERTING THE BATTERIES



Insert the provided key into the opening in the middle of the front panel of the dispenser. Once the key is inserted, press against the front panel to open.



Push down on the clip to release the battery casing. Only use rechargeable lithium-ion polymer battery, model: IP3566114-3P.



Insert the battery into the casing with the battery label facing the inside of the dispenser. Then close the battery latch until the clip clicks back into place.



Insert the spare battery (purchased separately) in to the spare battery casing on the righthand side, as shown in step 3.

SETTING UP THE DISPENSER: INSERTING THE CARTRIDGES



Remove cartridge from its packaging and insert cartridge into dispenser. Push until cartridge clicks into place. Now apply drip tray sticker onto drip tray groove (optional). Ensure the dispenser is turned off when applying the sticker.



Turn the dispenser on by pushing the On/Off button. The dispenser light will flash white, with the amount of white flashes correlating with the chosen dispensing volume (see page 15 for the full key to lights).



Ensure the key is inserted into the device and push to close the front panel. Click into place and remove the key.



Please wait a few seconds after closing the front panel before placing your hand in the dispensing area. Ensure your hand is placed fully under the dispensing outlet to receive the hand sanitizer.

POWERING THE BATTERY

HOW TO CHARGE THE BATTERY:

1. Remove the battery from the dispenser before charging.
2. Connect the battery to the USB-C charging cable provided with the dispenser and plug into the mains supply.

Please note - only the original INEOS battery model: IP3566114-3P should be used with this device.

If the dispenser is to be stored unused for long periods of time, the batteries should be removed.

Exhausted batteries should be removed from the device and safely disposed of by following the instructions in the recycling section on page 13.



CARTRIDGE REPLACEMENT

HOW TO CHANGE THE CARTRIDGE:

- Step 1. Push to open front panel (same as in step 1 page 10).
- Step 2. Remove the used cartridge from the dispenser. For recycling advice see page 13.
- Step 3. Remove new replacement cartridge from its packaging, taking care to handle the cartridge by the cartridge side grips, and insert into the dispenser.
- Step 4. Push to close front panel. Click into place.

Please note - our cartridges use a bag-in-bottle technology. The hand sanitiser is contained in a bag within the cartridge - the cartridge itself contains an intentional slit on its top surface, allowing air to enter the cartridge as sanitiser is dispensed and the bag collapses.



RECYCLING, REPLACEMENTS AND RETURNS

RECYCLING

CARTRIDGE RECYCLING: Our cartridges have been carefully engineered with recycling in mind. Each cartridge can be recycled in accordance with your local recycling guidelines.

Remove the sticker located on the bottom right hand corner on the back of the cartridge before placing the cartridge in the appropriate recycling waste bin as stipulated by your local authority.



DISPENSER RECYCLING: Prior to recycling of the dispenser, remove any enclosed batteries and dispose of them as per the instructions below. Dispose of the dispenser in the appropriate recycling bin as stipulated by your local authority.

BATTERY RECYCLING: Place any exhausted batteries in the appropriate recycling waste bins as stipulated by your local authority. The battery must not be disposed of with regular household waste.

REPLACEMENTS AND RETURNS

Replacement cartridges can be sourced via our website:

dispenser.ineoshygenics.com

Our INEOS Sanitiser Dispenser cartridges have been purposefully designed and built to seamlessly integrate into our dispensers, allowing for the controlled, safe and precise delivery of our hospital grade INEOS Hygienics sanitiser. For this reason, our dispensers are not compatible with any other cartridges.

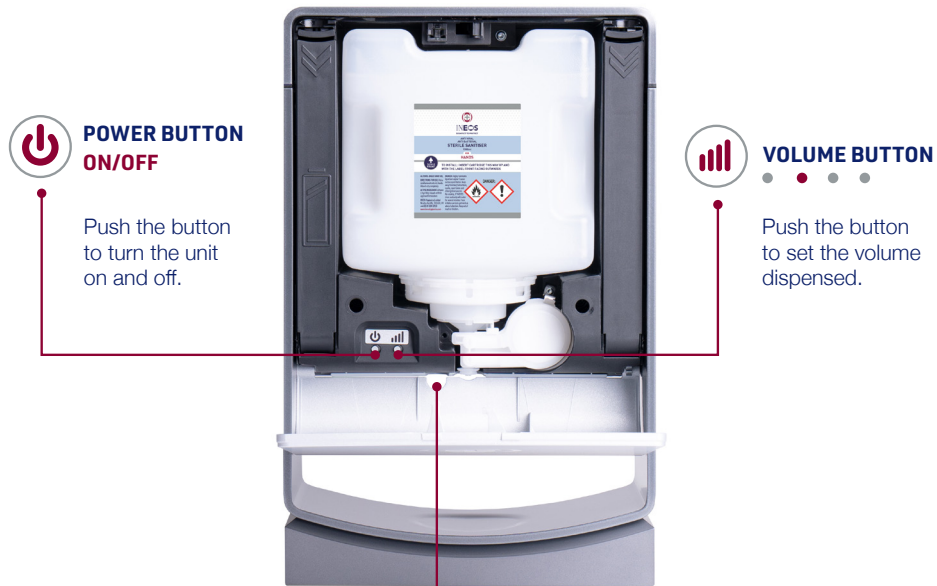
For safety purposes, do not refill the cartridges yourself or make any other alternations to the cartridges.

For all safety information, please see page 4.

For information on returns, please visit our website.

ADJUSTING THE SETTINGS

The dispenser's power and volume buttons are located behind the front panel.



POWER BUTTON ON/OFF

Push the button to turn the unit on and off.

VOLUME BUTTON

Push the button to set the volume dispensed.

○ Flash x 1	Volume 0.5ml
○ Flash x 2	Volume 1.0ml (default)
○ Flash x 3	Volume 1.5ml
○ Flash x 4	Volume 2.0ml

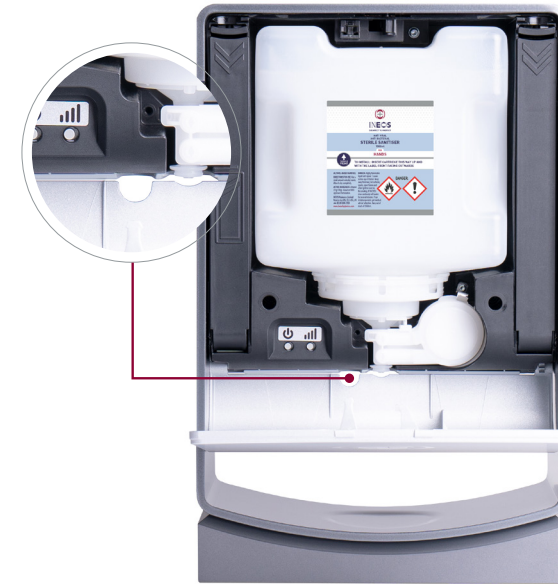
● ● ● ●
0.5 | 1.0 | 1.5 | 2.0

Volume increases 0.5ml with every push, to a maximum of 2.0ml (2nd push, as default setting is 1.0 ml). On the 3rd push the volume resets to 0.5ml and increases by 0.5ml again with every button push.

With every change of dispensing volume, the indicator light will flash to confirm the new volume selection.

KEY TO LIGHTS

The indicator light located next to the dispensing outlet will also inform you of the status of your dispenser as summarised in the table below.



LED STATUS GUIDE

Instruction: Press button to show dispenser status. Display lasts for 10 seconds.

ON/OFF	BATTERY
● Device is ready	● Battery level > 20%
● Device error	● Battery level 10 - 20%
	● Battery level < 10%

LEVEL

● Cartridge level > 20%
● Cartridge level 10%-20%
● Cartridge level < 10% or no cartridge present



LIGHT	STATUS	EXPLANATION
●	Dispenser working fine	A green light flashing during the dispensing of the gel means that everything is working well.
●	Power low	A blue light flashing during the dispensing of the gel means there is less than 10% of power left in the battery. Please consider recharging the battery using the USB-C charging cable provided in order to avoid the battery running flat.
●	Gel level low	A red light flashing during the dispensing of the gel means there is less than 10% of the sanitiser solution left in the cartridge. Consider sourcing a new cartridge in order to exchange when your current cartridge runs out. Replacement cartridges can be purchased in the website shop. Do not attempt to refill existing cartridges yourself or make any other alterations to the cartridges.
●	Cartridge empty or no valid cartridge	A constant red light during the attempted use of the dispenser (hand inside the dispensing window) is an indication of a cartridge error – this means that either the cartridge is empty or there is no valid cartridge present. To remedy these issues please follow the stepwise instructions given in the troubleshooting section on page 16.
●	Dispenser error	A flashing red light whilst the dispenser is on but idle is an indication of a dispenser error. To remedy, please follow the stepwise instructions on page 16.

If your dispenser shows any of the above warning lights - please follow the instructions on page 16 to remedy the issue. If problems persist, please visit our website for more troubleshooting tips: dispenser.ineoshygenics.com

TROUBLESHOOTING YOUR DISPENSER

SOLVING CARTRIDGE ERRORS (CARTRIDGE LOW, EMPTY OR NO VALID CARTRIDGE)

If a constant red light is shown during the attempted use of your dispenser (hand inside the dispensing window) follow the below stepwise instructions. Please continue down the list until your issue is remedied:

1. Check whether there is a cartridge present in your device – if not, insert a new cartridge.
2. Check if the cartridge is empty, if yes – insert a new cartridge which is full.
3. Clean in and around the dispenser outlet using a soft cloth.
4. Turn the dispenser off, remove the battery (ensure it is charged) and insert again.
5. If the issue persists, please visit our website for further troubleshooting advice:

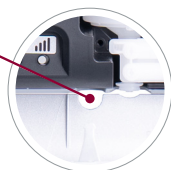
dispenser.ineoshygienics.com

SOLVING DISPENSER ERROR

If a flashing red light occurs while the dispenser is on but idle, follow the below stepwise instructions. Please continue down the instruction list until your issue is solved:

1. Make sure the dispensing area is free of any objects.
2. Open the dispenser door by pushing the front. Remove the cartridge, insert the cartridge again and close the door.
3. Remove the battery, fully charge using the USB-C charging cable provided and insert again. Ensure the battery is inserted in the correct position, as shown on page 10.
4. Make sure the lens of the hand sensor is not blocked.
5. Exchange the cartridge present in the dispenser.
6. Remove the battery, ensure fully charged and replace again.

If the issue persists, please visit our website for further troubleshooting advice: dispenser.ineoshygienics.com



DISPENSER NOT WORKING AND NO INDICATOR LIGHTS ARE SHOWN

If you are attempting to use your dispenser and it is not dispensing and no indicator lights are shown, follow the below stepwise instructions until your issue is solved:

1. Please ensure power is on (power button pressed).
2. Ensure battery is charged and correctly inserted into the left-hand battery casing within the device (see page 10). Use the USB-C charging cable provided with the dispenser to charge your battery (see page 16).
3. If the dispenser is still not working and no indicator lights are showing then please visit our website for further troubleshooting advice: dispenser.ineoshygienics.com


CLEANING THE DISPENSER

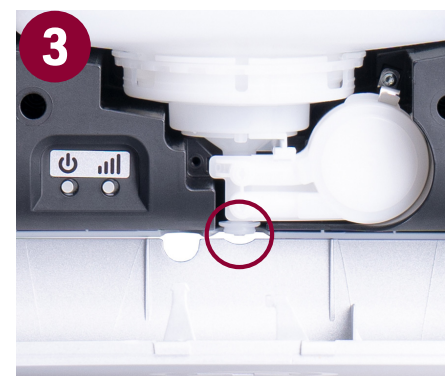
Cleaning the dispenser is recommended every time the cartridge is replaced.



 Power off.



 Clean with soapy water and a soft cloth. Do not use abrasive chemicals to clean the dispenser.



A small amount of dried gel could be present around the dispenser or cartridge outlet – if this occurs, please clean in and around the outlet in order to remove.



 Power on. Dispensing volume setting retains previous selection.

WALL MOUNTING

The INEOS Sanitiser Dispenser can also be wall mounted (wall mount sold separately). For wall mounting guidance see below.



1 Remove the table-top base of the dispenser by unscrewing the four screws underneath the dispenser using the tool provided.



2 Push to open the front cover of the dispenser. Unscrew the screws through to the back of the unit and remove the back cover.

WALL MOUNTING



3 Secure the wall plate to the wall using the screws and wall plugs provided.



4 Place the dispenser onto the wall mount and secure with the original screws through to the back of the unit.

FLOOR STAND ASSEMBLY

FLOOR STAND BOX CONTENTS

- 1 x Floor stand, part assembled
- 2 x Stand panel
- 1 x Floor stand plate
- 4 x M3 x 25 screw
- 1 x Hex key 5, 24 x 67
- 1 x Torx key T10, 25 x 65

SETTING UP THE STAND

CAUTION

The floor stand base plate is heavy and should be lifted with care. A minimum of two persons are recommended for floor stand assembly.



SETTING UP THE STAND

1



Lay the floor stand packaging on the floor, make sure that the packaging opens upwards.

2



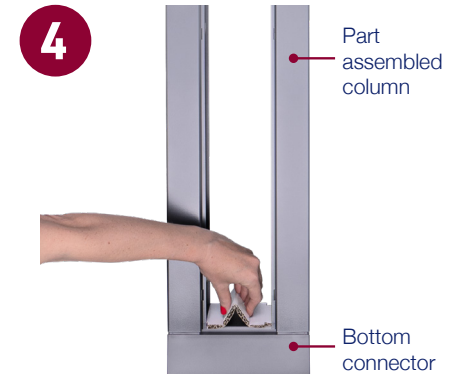
Remove the table top stand from the bottom of the dispenser using the Torx key T10.

3



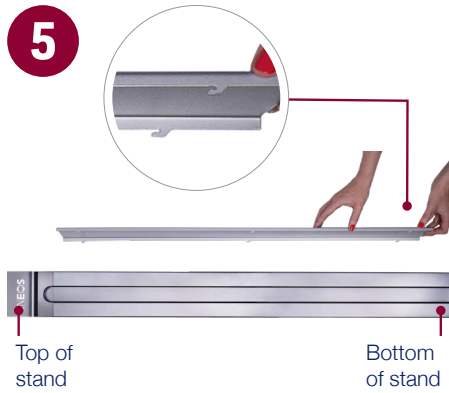
Fix the dispenser to the part assembled column by screwing the 4 x M3 x 25 screws into the base of the dispenser using the Torx key T10.

4



Remove the cardboard distance holder, without closing the small gap between the side pillars of the part assembled column and the bottom connector.

SETTING UP THE STAND



Insert the panels to both sides, making sure that the panels are inserted with the panel hooks positioned as shown in the image above.



Push the bottom connector up to close the small gap between the panels and the top connector, securing the stand in place.



To assist with construction, place the part assembled column on the floor stand packaging as shown in image 7. Remove the screws from the base of the part assembled column using the Hex key 5.



Add the floor stand plate and screw in the screws removed in step 7.





INEOS
DISINFECT TO PROTECT

INEOS Hygienics Limited

Newton Aycliffe, DL5 6EA, UK

+44 (0) 20 3205 2923

dispenser.ineoshygienics.com

www.ineoshygienics.com

