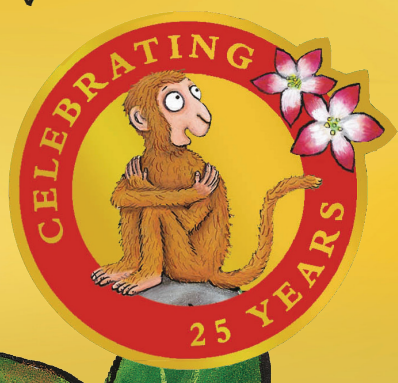


JULIA DONALDSON * AXEL SCHEFFLER

Monkey Puzzle

Activity Pack



Celebrate 25 years of *Monkey Puzzle*
with this fun activity pack!

How to draw Monkey

Trace over the grey lines to learn how to draw Monkey from *Monkey Puzzle!*



1. Start with the face.

Draw a long nose, a big, smiley mouth and a chin.

2. Add two eyes and

eyebrows with a little line under the left eye.

3. Add Monkey's hairline.

Use lots of little lines to make him look furry.



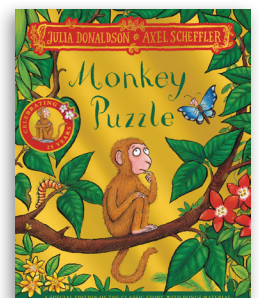
4. Finish Monkey's head and neck. Add an ear in the shape of the letter C.

5. Draw a long, rounded tummy, two arms and two hands. Leave a gap for the leg

6. Draw four lines for Monkey's legs (one of the legs should fill the gap left in step 5). Draw a foot at the end of each leg.

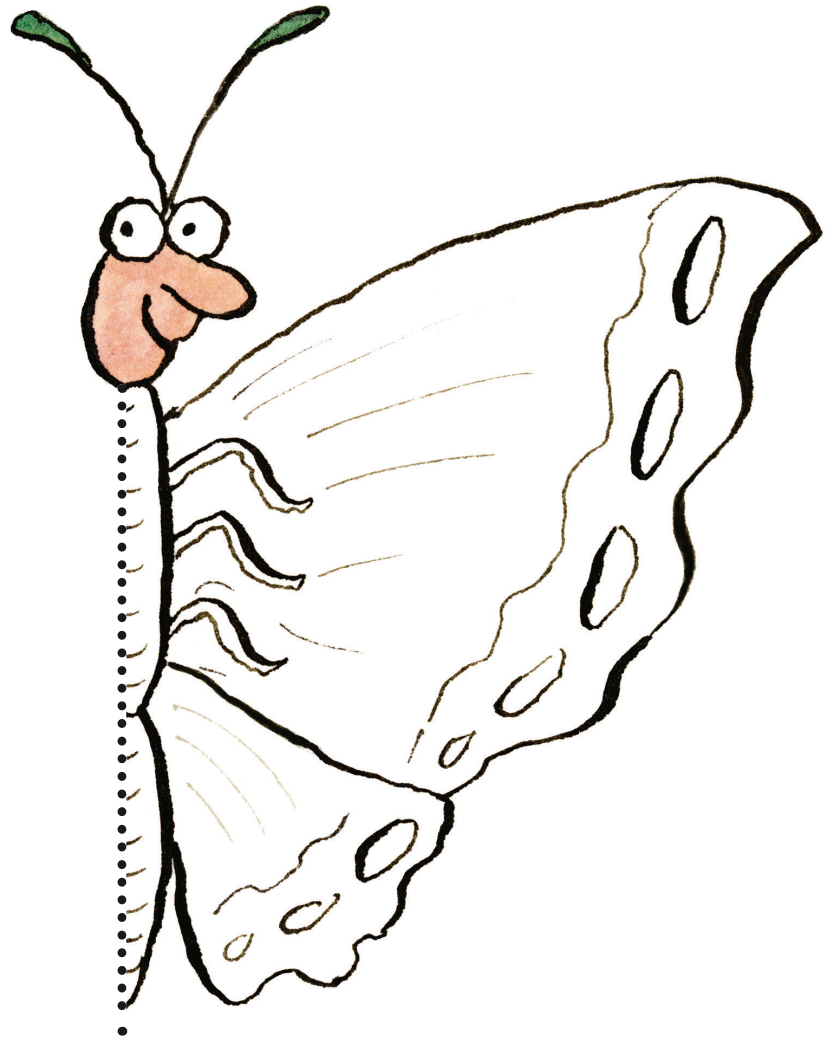


7. Now give Monkey a long, fluffy tail. Finish your picture by covering Monkey in lots of little lines that look like fur.



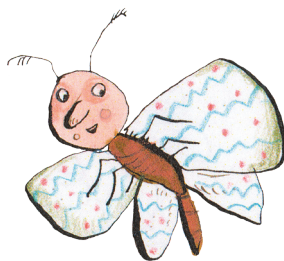
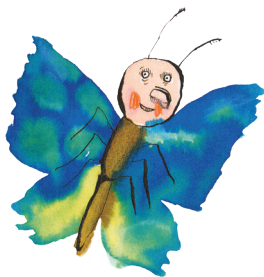
Draw and colour in the butterfly

Can you finish the other half of the butterfly below and then colour it in?

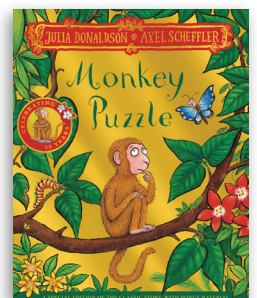


Axel Scheffler drew lots of versions of the butterfly who helps Monkey find his mum before landing on the one you see in the picture book.

Which one is your favourite?



I'm the one in the story!



Sign with *Monkey Puzzle*

Can you sign some of the words in the *Monkey Puzzle* story?



Animal

Two middle fingers
close onto thumbs



Bat

Flutter fingers

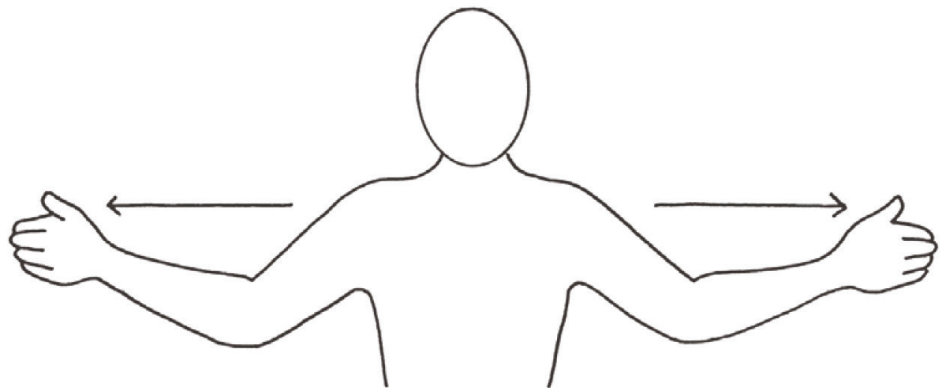


Butterfly

Flutter hands and move
them slightly upwards
and forwards



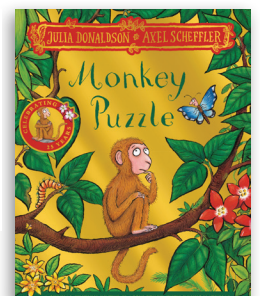
Beak



Big

Begin sign with hands closer together
like 'Small' then draw apart

Watch Julia Donaldson perform the
Monkey Puzzle song with Makaton signs

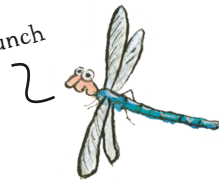


Elephant mask

You will need:

- A paper plate
- Safety scissors
- Paints
- A paintbrush
- 2 A4 sheets of card
- Glue
- A length of elastic

You could use a hole punch if you have one.



What to do:

1 Ask a grown-up to cut eyeholes in your paper plate so you'll be able to see when you wear your mask.

2 Paint the plate grey and leave to dry.

3 Cut two ear shapes from one sheet of card, and a trunk from the second sheet. Paint them grey and add some dark grey wrinkles to the trunk. Leave to dry.

Leave to dry.

4 Glue your ears either side of your mask, then glue the trunk in the middle.

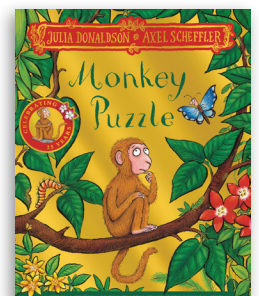
5 Paint two white tusks either side of the trunk. Leave to dry.

6 Ask your grown-up to pierce a hole on either side of the mask, just above the ears.

7 Thread the elastic through the holes and ask your grown-up to adjust the mask for you so it fits around your head. Then tie the ends of the elastic in tight knots to secure.

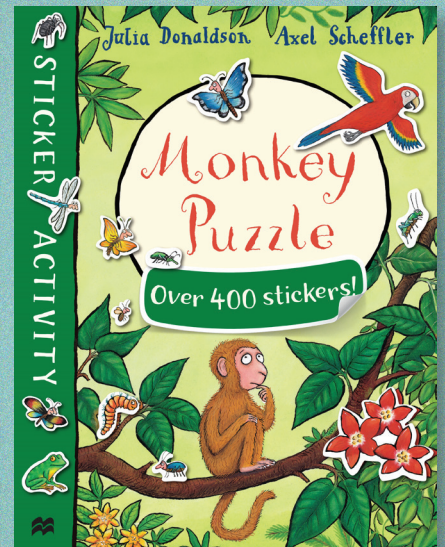
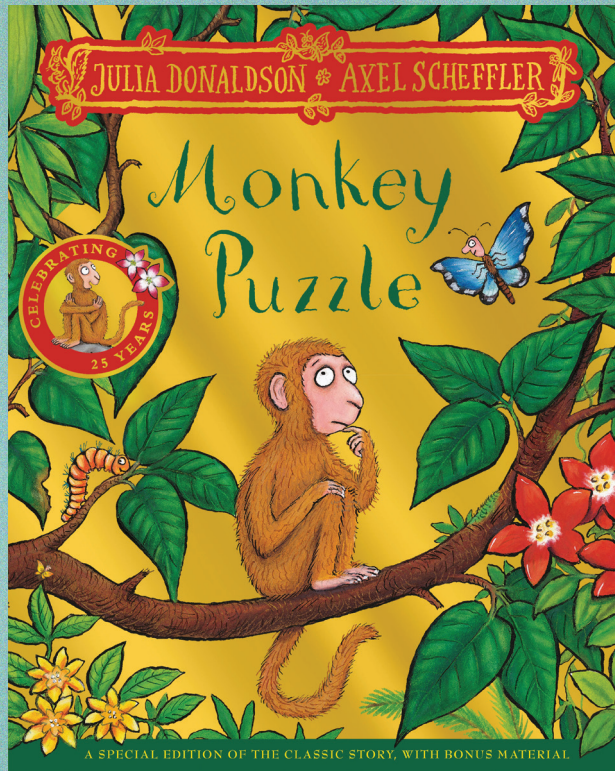
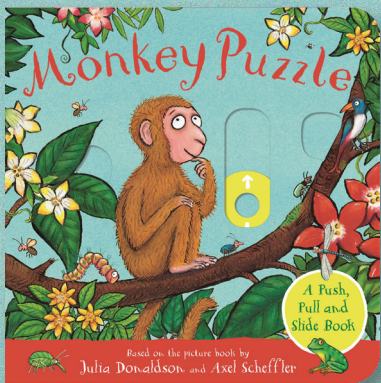


- Why not paint a paper plate red and add a beak to make a parrot mask? You could decorate it with feathers, too.
- You could make other animal masks for your friends and act out a story!



JULIA DONALDSON * AXEL SCHEFFLER

Happy 25th birthday Monkey Puzzle



SCAN HERE



Scan here to listen to the Monkey Puzzle song, along with many based on Julia Donaldson's much-loved picture books, performed by Julia herself!