

# Two bedroom Four Person Maisonette

## Ground Floor

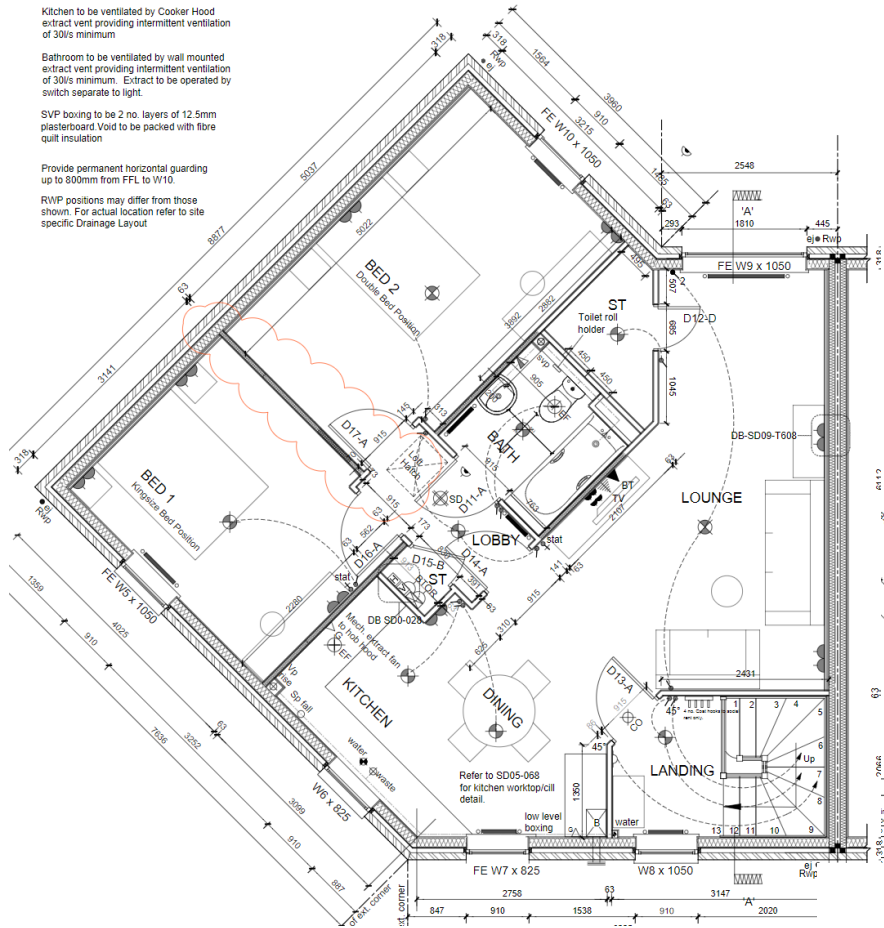
Kitchen to be ventilated by Cooker Hood extract vent providing intermittent ventilation of 30/s minimum

Bathroom to be ventilated by wall mounted extract vent providing intermittent ventilation of 30/s minimum. Extract to be operated by switch separate to light.

SVP boxing to be 2 no. layers of 12.5mm plasterboard Void to be packed with fibre quilt insulation

Provide permanent horizontal guarding up to 800mm from FFL to W10.

RWP positions may differ from those shown. For actual location refer to site specific Drainage Layout



## First Floor

RWP positions may differ from those shown. For actual location refer to site specific Drainage Layout

Kitchen to be ventilated by Cooker Hood extract vent providing intermittent ventilation of 30/s minimum

Bathroom to be ventilated by wall mounted extract vent providing intermittent ventilation of 30/s minimum. Extract to be operated by switch separate to light.

SVP boxing to be 2 no. layers of 12.5mm plasterboard Void to be packed with fibreglass quilt insulation

To be coordinated with timber frame designer

