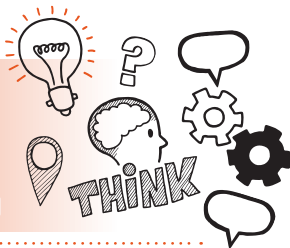


Think about
Workplace project,
presentation and Q&A
Level 3 Supply Chain Practitioner
(Fast-moving consumer goods) AP01



On the day of assessment, you will carry out:



An up to 60-minute presentation and Q&A session (a maximum of 15 minutes allowed for the presentation)



Remote or face-to-face



Under exam conditions



With an end-point assessor and line manager (optional)



Key point

You will have already submitted your workplace project report.



Do

- Review the criteria associated with the workplace project, presentation and Q&A - this can be found in the EPA-kit
- Base your presentation on the contents of your workplace project report
- Bring your workplace project report and other materials to the assessment
- Be prepared to answer questions based on your project report and presentation



Don't

- Forget to plan
- Forget to reflect on your on-programme experiences and learning
- Forget to bring your ID



Next steps

- Results can take up to 12 working days to be confirmed
- Your manager/training provider will inform you of the results



Resits

- If you do not achieve a pass result on the workplace project, presentation and Q&A you can resit the assessment. The highest grade you can achieve overall for a resit is a pass



Notes

A series of horizontal dotted lines for writing notes, spanning the width of the page.

