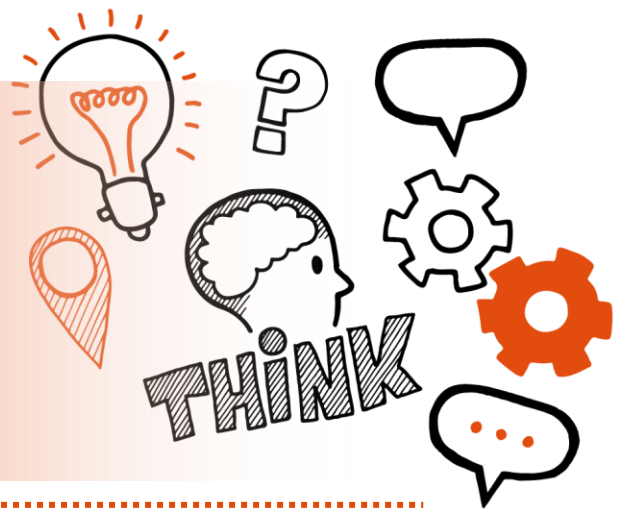


Think about

Professional discussion

Level 3 ST0217 Senior Healthcare  
Support Worker – Maternity Support  
V1.2 (AP02 09/18)



On the day of this assessment you will carry out:



A 60-minute professional discussion



Remote or face-to-face



In a suitable, controlled environment free from  
distraction



With an end-point assessor



**Key point**

You will have already submitted your portfolio of evidence, which is not formally assessed, but can be used to illustrate your answers.



## Do

- Review the criteria associated with the professional discussion - this can be found in the EPA Kit and in the table at the end of this document
- Review relevant legislations, regulations and your organisation's policies and procedures
- Ensure a quiet room is available and that there are no interruptions
- Reflect on your on-programme learning and experience giving consideration to patient confidentiality



## Don't

- Forget to bring your ID
- Forget to plan
- Forget to bring your portfolio to refer to during the professional discussion



## Next steps

- Results can take up to 7 working days to be confirmed
- Your manager or training provider will inform you of the results



## Resits

- If you do not achieve a pass result on the professional discussion, you can resit the assessment





## Use the table below to plan and prepare for the professional discussion

**(P)** indicates pass criteria

**(D)** indicates distinction criteria

Assessment criteria	Key points to remember
<b>Health and wellbeing</b>	
<b>(P)</b> Describe the indicators of good physical and mental health for the demographic group you work with and describe a time where you have provided brief opportunistic advice on health and wellbeing	
<b>(P)</b> Describe a time when you noted a deterioration in an individual in your care and the actions you took	



**Duty of care and candour, safeguarding, equality and diversity**

**(P)** Explain your responsibilities in relation to safeguarding and what action you would take if you suspected abuse

**(P)** Explain the principles of equality, diversity and inclusion and can describe how discrimination occurs

**Person-centred care, treatment and support**

**(P)** Explain the meaning of person-centred care and how you apply this to your work to ensure a good experience for the individual



**(P)** Explain the meaning of 'clinical effectiveness' and describe a time where you have challenged practice in the place of work

**Communication**

**(P)** Maintain patient confidentiality throughout the professional discussion

**(D)** Discuss how you interact with other professionals including describing how you work to best practice



**Personal, people and quality improvement**

**(P)** Describe how you have used feedback to develop your own skills and performance

**(D)** Describe how you have been proactive in your own development and discuss two examples of how you have used reflection to have a positive impact on your work

**(D)** Describe how you have acted as a role model to others and discuss two examples of where you have mentored others within the scope and boundaries of your practice



**(D)** Discuss an example of when you have demonstrated supervisory leadership in your place of work

**Health, safety and security**

**(P)** Explain the meaning of 'risk' and 'risk assessment' and how you use risk assessment in your work to operate safely

**Values**

**(P)** You will be caring and compassionate, honest, conscientious and committed



## Behaviours

**(P)** Have the courage to challenge areas of concern and work to best practice

**(P)** Be adaptable, reliable and consistent

**(P)** Show resilience and self-awareness





**(P)** Show supervisory leadership

**Maternity Support- Assist with clinical tasks**

**(P)** Describe the signs of mental ill health in relation to pregnancy, labour, delivery or parenthood and give an example from your practice to describe how you responded to signs of deterioration in mental health

**(P)** Explain how to prepare for instrumental deliveries and describe how you support the delivery team during an instrumental delivery



**(P)** Describe how you assist other practitioners with ultrasound scans

**Maternity Support- Support mothers and birthing partners**

**(P)** Discuss your role in postnatal health education, drawing on examples from your practice where you have been teaching parents to care for their baby

V2

