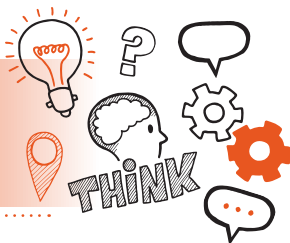


Think about
Interview Supported
by Portfolio of Evidence
Level 5 Coaching Professional V1.0



On the day of assessment, you will carry out:



A 60-minute interview



Remote or face-to-face



Change to Suitable assessment environment



With an end-point assessor



Key point

You will have already submitted your portfolio of evidence, however it will not be directly assessed.



Do

- Review the criteria associated with the interview – this can be found in the EPA-kit
- Ensure a quiet room is available and that there are no interruptions or distractions
- Bring your on-programme evidence with you to the assessment, ensure this is kept to a minimum and well organised
- Reflect on your on-programme learning and experience



Don't

- Forget to plan
- Forget to tell your colleagues that you are being assessed
- Forget to review and remind yourself of the contents and referencing of your portfolio



Next steps

- Results can take up to 7 working days to be confirmed
- Your manager/training provider will inform you of the results



Resits

- If you do not achieve a pass result on the interview supported by portfolio of evidence, you can resit the assessment



Use the table below to plan and prepare for the interview.

Standard area	Key points to remember
The coaching process	
Self-awareness	

**Stakeholder
management**

Diversity

