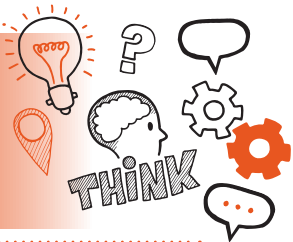


**Think about
Interview
Level 3 Transport and Warehouse
Operations Supervisor AP01 –
Option 1 Transport**



On the day of this assessment you will carry out:



A 45-minute interview



Remote or face-to-face



In a suitable environment under exam conditions



**With an end-point assessor and your employer
(optional)**



Key point

You must prepare for the interview by considering how you will meet the required knowledge, skills and behaviours associated with this assessment method.



Do

- Review the criteria associated with the interview – this can be found in the EPA kit
- Review relevant legislation, regulations, external and internal professional codes of conduct and your organisation's policies and procedures
- Make sure you have a quiet room available free from distractions or interruptions
- Be prepared to answer at least 10 questions that cover the required knowledge, skills and behaviours for this assessment



Don't

- Forget to plan
- Forget to bring your notes to refer to during the interview
- Forget to bring your ID



Next steps

- Results can take up to 7 working days to be confirmed.
- Your manager/training provider will inform you of the results.



Resits

- If you do not achieve a pass result on the interview you can resit the assessment.



Use the table below to plan and prepare for the interview

Standard areas	Key points to remember
Training and development	
Management	

Standard areas	Key points to remember
Compliance health and safety	
Fuel	
Operations	

