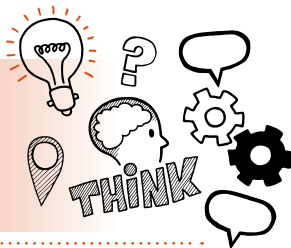


Think about  
Practical assessment with questions  
Level 2 ST0257 Large Goods Vehicle  
(LGV) Driver C and E V1.4



On the day of assessment, you will carry out:



**A 120-minute practical driving assessment  
including 45 mins for questioning**



**Face-to-face in a suitable simulated environment**



**Under controlled conditions**



**Part 1 - Assessor must obtain feedback on the  
route from the manager at the employer site**



## Key point

The practical assessment consists of **three** components carried out in the following order:

1. Practical vehicle journey plan with questions
2. Pre-use checks with questions
3. Practical driving assessment with questions



## Do

- ☐ Review the criteria associated with the practical assessment with questions - this can be found in the EPA-kit
- ☐ Be prepared to plan a 30-minute journey to a destination you have been allocated
- ☐ Be prepared to carry out pre-journey checks in line with the DVSA guidelines for vehicle roadworthiness
- ☐ Be prepared to answer questions that check your understanding of the knowledge and skills you demonstrate
- ☐ Be prepared to demonstrate driving on a range of roads and in a range of conditions
- ☐ Remember to carry out the pre-drive checks, for example, tyres, lights, first-aid kit, fire extinguisher, tail lift, secure load



## Don't

- ☐ Forget to plan
- ☐ Forget to wear PPE, especially safety gloves
- ☐ Forget to meet the timescales you are given to work to
- ☐ Forget to bring your ID
- ☐ Forget to show good customer service and going 'above and beyond'



## Next steps

- Results can take up to 7 working days to be confirmed
- Your manager/training provider will inform you of the results



## Resits

- If you do not achieve a pass result on the practical assessment with questions you can resit the assessment.



## Use the table below to plan and prepare for the practical assessment.

**(P)** indicates pass criteria

**(D)** indicates distinction criteria

| Assessment criteria  | Key points to remember |
|--|------------------------|
| <b>Vehicle preparation</b>   |                        |
| <b>(P)</b> Carry out the safe preparation and safety checks for an LGV vehicle and load in accordance with DVSA and organisation's guidelines and complete the appropriate documentation |                        |
| <b>(P)</b> Plan a safe and efficient route   |                        |
| <b>(P)</b> Make necessary changes to planned route reacting to traffic or weather situations   |                        |
| <b>(D)</b> Identify individual axle weights and adjust how this affects vehicle handling depending on the load and take appropriate action to adjust accordingly                         |                        |

| Assessment criteria  | Key points to remember |
|--|------------------------|
| <b>Drives safely</b>   |                        |
| (P) Handle the LGV safely on public and private roads not endangering other road users by your actions   |                        |
| (P) Park the vehicle safely in a restricted space and safely use and position vehicle fitted equipment   |                        |
| (P) Takes account of the size and type of the vehicle and trailer, ensuring a safe distance is maintained at all times   |                        |
| (P) Proficiently control the vehicle in a range of traffic situations and in consideration of the weather conditions, e.g., urban/country environment, peak-time, snow, windy conditions |                        |
| (D) Explain the consequences of a given scenario outlining the danger to individuals or the impact on the vehicle  |                        |
| <b>Professionalism</b>   |                        |
| (P) Arrive on time, wearing appropriate company-issued PPE and any company uniform   |                        |

| Assessment criteria   | Key points to remember |
|---|------------------------|
| <b>Use of equipment &amp; IT</b>  |                        |
| (P) Use digital tachograph and any onboard telematics, GPS, cameras, reversing sensors (where fitted)   |                        |
| <b>Route planning</b>   |                        |
| (P) Plan the most economical route to the directed location adapting route to avoid known traffic hotspots/hazards, taking into account congestion, low bridges and weight restrictions |                        |
| (D) Justify your chosen route   |                        |
| (D) Explain the potential impact of selecting an alternative route  |                        |

| Assessment criteria   | Key points to remember |
|---|------------------------|
| <b>Trailer</b>  |                        |
| (P) Check the trailer number against the manifest/paperwork and connect it following company procedures |                        |
| (P) Safely open and restrain trailer and vehicle body doors   |                        |
| (D) Explain the consequences of a given fault   |                        |