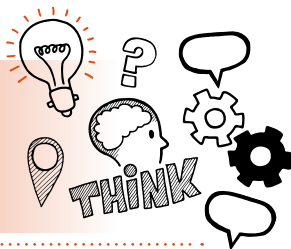


Think about
Practical assessment with questions
Level 2 ST0257 Large Goods Vehicle
(LGV) Driver C and E V1.3



On the day of assessment, you will carry out:



**A 120-minute practical driving assessment
including 45 mins for questioning**



Face-to-face in a suitable simulated environment



Under controlled conditions



**Part 1 - Assessor must obtain feedback on the
route from the manager at the employer site**



Key point

The practical assessment consists of **three** components carried out in the following order:

1. Practical vehicle journey plan with questions
2. Pre-use checks with questions
3. Practical driving assessment with questions



Do

- ☐ Review the criteria associated with the practical assessment with questions - this can be found in the EPA-kit
- ☐ Be prepared to plan a 30-minute journey to a destination you have been allocated
- ☐ Be prepared to carry out pre-journey checks in line with the DVSA guidelines for vehicle roadworthiness
- ☐ Be prepared to answer questions that check your understanding of the knowledge and skills you demonstrate
- ☐ Be prepared to demonstrate driving on a range of roads and in a range of conditions
- ☐ Remember to carry out the pre-drive checks, for example, tyres, lights, first-aid kit, fire extinguisher, tail lift, secure load



Don't

- ☐ Forget to plan
- ☐ Forget to wear PPE, especially safety gloves
- ☐ Forget to meet the timescales you are given to work to
- ☐ Forget to bring your ID
- ☐ Forget to show good customer service and going 'above and beyond'



Next steps

- Results can take up to 7 working days to be confirmed
- Your manager/training provider will inform you of the results



Resits

- If you do not achieve a pass result on the practical assessment with questions you can resit the assessment.



Use the table below to plan and prepare for the practical assessment.

(P) indicates pass criteria

(D) indicates distinction criteria

Assessment criteria	Key points to remember
Vehicle preparation	
(P) Carry out the safe preparation and safety checks for an LGV vehicle and load in accordance with DVSA and organisation's guidelines and complete the appropriate documentation	
(P) Plan a safe and efficient route	
(P) Make necessary changes to planned route reacting to traffic or weather situations	
(D) Identify individual axle weights and adjust how this affects vehicle handling depending on the load and take appropriate action to adjust accordingly	

Assessment criteria	Key points to remember
Drives safely	
(P) Handle the LGV safely on public and private roads not endangering other road users by your actions	
(P) Park the vehicle safely in a restricted space and safely use and position vehicle fitted equipment	
(P) Takes account of the size and type of the vehicle and trailer, ensuring a safe distance is maintained at all times	
(P) Proficiently control the vehicle in a range of traffic situations and in consideration of the weather conditions, e.g., urban/country environment, peak-time, snow, windy conditions	
(D) Explain the consequences of a given scenario outlining the danger to individuals or the impact on the vehicle	
Professionalism	
(P) Arrive on time, wearing appropriate company-issued PPE and any company uniform	

Assessment criteria	Key points to remember
Use of equipment & IT	
(P) Use digital tachograph and any onboard telematics, GPS, cameras, reversing sensors (where fitted)	
Route planning	
(P) Plan the most economical route to the directed location adapting route to avoid known traffic hotspots/hazards, taking into account congestion, low bridges and weight restrictions	
(D) Justify your chosen route	
(D) Explain the potential impact of selecting an alternative route	

Assessment criteria	Key points to remember
Trailer	
(P) Check the trailer number against the manifest/paperwork and connect it following company procedures	
(P) Safely open and restrain trailer and vehicle body doors	
(D) Explain the consequences of a given fault	