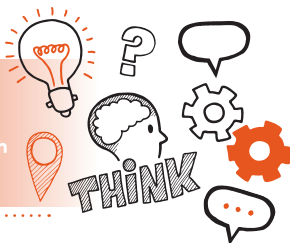


## Think about

Professional discussion underpinned by a portfolio of evidence - Level 3 Safety, Health and Environment (SHE) Technician AP03



## On the day of assessment, you will carry out:



A 60-minute professional discussion



Remote or face-to-face



Under exam conditions



With an end-point assessor



## Key point

You will have already submitted your portfolio of evidence. This is not directly assessed but will help you and the end-point assessor prepare for your professional discussion.



## Do

- Review the criteria associated with the professional discussion – this can be found in the EPA kit and in the table at the end of this document
- Review relevant legislation, regulations, external and internal professional codes of conduct and your organisation's policies and procedures
- Make sure you have a quiet room available where you will not be disturbed
- Select the best evidence from your portfolio to support your answers to questions asked by the assessor
- Be prepared to answer at least 10 questions around the following areas - ethics, professional judgment, CPD, driving innovation, reporting, inspections, stakeholder engagement, research, investigations and signposting to experts
- Be prepared to reflect on your on-programme experience and learning using examples from your work practice



## Don't

- Forget to plan
- Forget to bring your portfolio of evidence and other resources to support you in the discussion
- Forget to bring your ID



## Next steps

- Results can take up to 7 working days to be confirmed
- Your manager/training provider will inform you of the results



## Resits

- If you do not achieve a pass result on the professional discussion you can resit the assessment



## Use the table below to plan and prepare for the professional discussion.

**(P) indicates pass criteria**

**(D) indicates distinction criteria**

Assessment criteria	Key points to remember
(P) R1 Explains how they use research relating to safety, health and environmental issues from trusted sources to drive forward innovation and how they apply their own ongoing professional development to improve systems or processes (S10, B4, B8)	

(D) R2 Justifies research and selection criteria for application in the workplace to improve systems or processes (S10)

(P) I3 Describes how they can assist in an incident investigation and implement SHE inspection and monitoring systems (S6, S11)

(P) I4 Explains how they ensure manufacturer's instructions for the safe use of products is cascaded to colleagues (S5)

**(P) 15 Describes how they would monitor and analyse SHE performance, whilst ensuring all records are prepared and maintained in accordance with legislation and accessible to all authorised parties (S7, S8)**

**(D) 16 Explains how they would lead an incident investigation and their justification for embedding the lessons learnt (S11)**

**(D) 17 Explains the need for different types of SHE inspections and monitoring systems (S6)**

(P) S1 Explains how they assist the management team in establishing, managing or maintaining relationships with external stakeholders, internal departments and use their professional judgement to recognise situations where the activity will benefit from contributions and expertise of other internal departments and signpost to a more relevant third party internally (S9, S13, B5)

(D) S2 Justifies their professional judgement to recognise situations where the activity will benefit from contributions and expertise of other internal departments (S13)

(P) E1 Describes the moral reasons for implementing SHE practices and explains how they apply the code of ethics to ensure they uphold safe working practices at all times (K1, B6)

