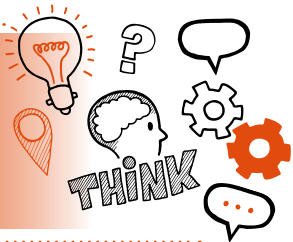


**Think about
Practical assessment with questions
Level 2 Passenger Transport Driver –
Bus and Coach v1.2**



On the day of this assessment you will carry out:



A 45-minute practical observation with questions



Face-to-face



**In a simulated environment relating to a
natural working environment**



With an end-point assessor



Key point

You will be observed completing a task, or series of tasks, and will be asked questions during natural stops between these tasks or after the completion of a task.



Do

- Review the criteria associated with the practical assessment - this can be found in the EPA Kit and in the table at the end of this document
- Review relevant legislation, regulations, codes of conduct and your organisation's policies and procedures
- Be prepared to answer at least 3 questions and any follow-up questions that your assessor may ask



Don't

- Forget to bring your ID
- Forget to plan
- Forget to relax and enjoy your assessment



Next steps

- Results can take up to 7 working days to be confirmed
- Your manager or training provider will inform you of the results



Resits

- If you do not achieve a pass result on the practical assessment with questions, you can resit the assessment



Use the table below to plan and prepare for the practical assessment with questions.

(P) indicates pass criteria

(D) indicates distinction criteria

Assessment criteria	Key points to remember
Work organisation	
(P) Locate and access the vehicle in line with risk assessments, method statements and safe systems of work	
(P) Describe the vehicle types, features, systems and requirements that may be used and explains new and evolving technologies	
(P) Complete pre-service vehicle checks, tests and documentation in line with company policy and procedures	
(P) Conduct pre-service route planning to meet service requirements. Source and interpret pre-service route planning information to determine timings to the route and consider customer onboard services	

Assessment criteria	Key points to remember
Displays and signage	
<p>(P) Use destination displays and signage within the vehicle to meet service requirements considering their impact on customers, driver and operator</p>	
End of service	
<p>(P) Finalise end of duty processes to pass control to others, secure and immobilises the vehicle for change over or taking out of service, and complete the required reporting requirements in line with company policy and procedures</p>	
Drive a bus or coach	
<p>(P) Meet the gateway requirements of holding a valid UK Category D licence and Driver CPC</p>	

