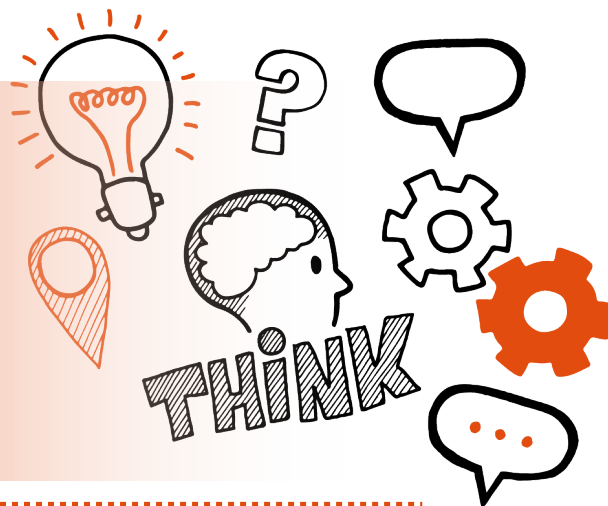


Think about
Practical Driving Assessment
Level 2 ST0257 Large Goods
Vehicle (LGV) Driver v1.1



On the day of this assessment you will carry out:



A 60-90 minute practical driving assessment



Normal place of work



Under controlled conditions



With an end-point assessor



Key point

A simulated scenario as well as questioning or prompts by the assessor may be used to collect any evidence you haven't been able to demonstrate.



Do

- Review the criteria associated with the practical driving assessment - this can be found in the EPA Kit and in the table at the end of this document
- Review relevant legislations, regulations and your organisation's policies and procedures
- Remember to carry out the pre-drive checks, for example, tyres, lights, first-aid kit, fire extinguisher, tail lift, secure load
- Be prepared to answer questions and any follow-up questions that your assessor may ask



Don't

- Forget to bring your ID
- Forget to plan



Next steps

- Results can take up to 7 working days to be confirmed
- Your manager or training provider will inform you of the results



Resits

- If you do not achieve a pass result on the practical driving assessment, you can resit the assessment





Use the table below to plan and prepare for the practical driving assessment

(P) indicates pass criteria

(D) indicates distinction criteria

Assessment criteria	Key points to remember
Preparation of a vehicle	
(P) Prepare the vehicle and load for deliveries (S6)	
Planning of delivery	
(P) Plan routes effectively (S8)	
Safe and efficient driving and use of equipment	
(P) Drive safely and efficiently on public and private roads (S1)	



(P) Use and position vehicle fitted equipment (S2)	
(P) Control the vehicle in all traffic situations (S3)	
(P) Use relevant equipment machinery safely (S4)	
Use of systems to process goods	
(P) Use basic IT systems (S9)	



Structure of the industry

(P) Comply with relevant systems and processes (legislation and regulation) (S5)

Awareness of own role

(P) Protect the driver, vehicle and load (S7)

(P) Maintain the health, safety and security of people at all times (S10)

Distinction criteria

(D) Make fewer errors and start to demonstrate advanced and courteous driving skills for example enhanced application of the Highway Code and defensive and economic driving skills



<p>(D) Go above and beyond what is expected of your role, for example, demonstration of particularly fast, efficient and new ways of working and improved ways of working</p>	
<p>(D) Demonstrate originality in the consistent, effective application of technical processes, resources, techniques and materials</p>	
<p>(D) Complete tasks independently to a level that far exceeds the minimum standard with few or no errors</p>	
<p>(D) Select and use appropriate skills and processes, justifying your choices</p>	



<p>(D) Be able to challenge where appropriate and identify solutions rather than just problems or issues</p>	
---	--

V1.0

