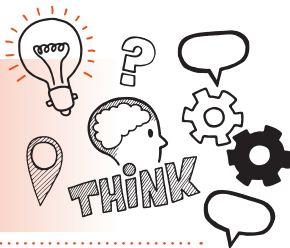


Think about
Observation of Practice
Level 2 Healthcare Support
Worker AP01



On the day of assessment, you will carry out:



A 90 to 120-minute observation



Face-to-face



Under exam conditions



With an end-point assessor



Key point

Your end-point assessor will need to stop the observation if you demonstrate any unsafe practices or breaches of professional codes of conduct.



Do

- Review the criteria associated with the observation of practice – this can be found in the EPA kit
- Discuss the activities you need to demonstrate with your manager
- Use the planner to plan how you will demonstrate the skills you have that are associated with the observation of practice
- Review relevant legislation, regulations and your organisation's policies and procedures
- Be prepared to answer follow-up questions that further test your skills and behaviours



Don't

- Forget to bring your ID
- Forget to tell your colleagues and to obtain consent from patients who are present while you are being observed
- Panic if a planned activity cannot go ahead, you can identify another activity to be observed



Next steps

- Results can take up to 12 working days to be confirmed
- Your manager/training provider will inform you of the results



Resits

- If you do not achieve a pass result on the observation of practice you can resit the assessment



Use the table below to plan and prepare for the observation of practice

Standard area	Key points to remember
Communication (including documentation)	
Person-centred care and support	

**Personal
and people
development**

**Health, safety
and security**

**Infection
prevention
and control**

**Moving and
handling**

Behaviours:

**Dignity
Respect
Courage
Adaptability
Discretion
Resilience
Self-awareness**