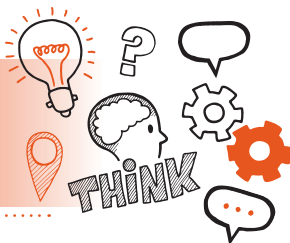


Think about
Direct Observation
Level 3 Spectacle Maker AP01



On the day of assessment, you will carry out:



A 120-minute observation



Face-to-face



In your workplace



With an end-point assessor



Key point

Your end-point assessor will need to stop the observation if you demonstrate any unsafe practices or breaches of professional codes of conduct.



Do

- Review the criteria associated with the direct observation – this can be found in the EPA kit
- Review relevant legislation, regulations and your organisation's policies and procedures
- Use the planner to plan how you will demonstrate the skills you have that are associated with the direct observation
- Be prepared to answer questions throughout the observation and at the end in a brief Q&A session



Don't

- Forget to plan
- Forget to bring your ID
- Forget to tell your colleagues and customers you are being observed
- Forget to let your colleagues know that the assessment is being recorded and that they **MUST NOT** answer questions for you



Next steps

- Results can take up to 12 working days to be confirmed
- Your manager/training provider will inform you of the results



Resits

- If you do not achieve a pass result on the direct observation you can resit the assessment



Use the table below to plan and prepare for the direct observation

Standard area	Key points to remember
Knowledge - Health and safety	
Knowledge - Tools	

**Knowledge -
Quality**

**Knowledge -
The
manufacture,
service and
repair of
spectacles**

**Skills - Health
& safety and
working
environment**

Skills - Technical interpretation and understanding

Skills - Manufacturing and repair process

Skills - Tools and equipment

Skills - Quality

**Behaviours -
Professionalism**

**Behaviours
- Safety
orientated**

