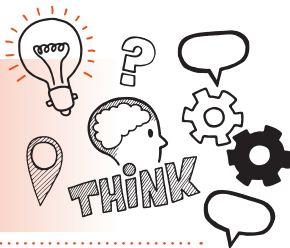


Think about
Professional discussion
Level 3 Fire, Emergency and Security
Systems Technician AP02



On the day of assessment, you will carry out:



A 45-minute professional discussion



Remote or face-to-face



Under controlled conditions



With an end-point assessor and line manager
(optional)



Key point

You will have already submitted your portfolio that will be used along with other evidence, for example, self-assessment to inform the discussion.



Do

- Review the criteria associated with the professional discussion – this can be found in the EPA kit
- Review relevant legislation, regulations, external and internal professional codes of conduct and your organisation's policies and procedures
- Be prepared to answer scenario-based questions and give real examples



Don't

- Forget to plan
- Forget to bring your self-assessment and supporting evidence to support you in the discussion
- Forget to bring your ID



Next steps

- Results can take up to 12 working days to be confirmed
- Your manager/training provider will inform you of the results



Resits

- If you do not achieve a pass result on the professional discussion you can reattempt the assessment



Use the table below to plan and prepare for the professional discussion

Standard area	Key points to remember
Develops and retains trust with customers and colleagues by undertaking responsibilities in an ethical and empathetic manner	

Shows commitment through being punctual, reliable, diligent and professional

Takes responsibility for own judgements and actions to achieve quality focussed outcomes

Demonstrates drive and flexibility in fulfilling requirements of role

Takes responsibility and fulfils own development and the needs of others

Keeps up to date with best practice

Maintains continuous professional development

Works productively and engages with colleagues, clients, other trades, suppliers and the public

Takes responsibility for promoting a healthy and safe working environment

Gives consideration to appropriate use of resources and own actions taking into account the impact on environmental, social and economic factors

Uses initiative to seek continuous professional development opportunities

Shows willingness to work above and beyond what is required

Shares best practice with colleagues