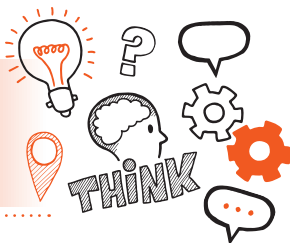


Think about  
Report with questioning  
Level 3 Optical Assistant -  
IfATE v1.0



On the day of assessment you will carry out:



A 30-minute Q&A session



Face-to-face or via online  
videoconferencing



Under exam conditions



With an end-point assessor



**Key Point**

You will have already submitted your report.



## Do

- Review the criteria associated with the report with questioning, this can be found in the EPA kit
- Review relevant legislation, regulations and your organisation's policies and procedures
- Make sure you have a quiet room available
- Inform your colleagues about the assessment and remind them that you can't be disturbed or interrupted
- Ask for the question to be repeated if you don't understand
- Provide clear and concise answers to the questions that you are asked



## Don't

- Take any textbooks, workbooks or organisational materials into the assessment
- Provide unnecessary information
- Forget to plan



## Next Steps

- Results can take up to 7 days to be confirmed.
- Your line manager or training provider will inform you of the results.



## Resits

- If you do not achieve a pass result on the report with questioning you can resit the assessment.



Use the table below to plan and prepare for the Q & A session.

Standard area	Key points to remember
Policies, procedures and standards	

