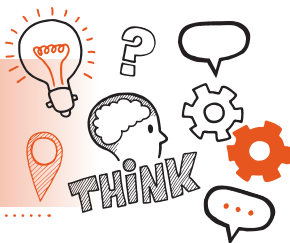


Think about  
Observation with Q&A  
Level 5 Coaching Professional V1.0



On the day of assessment, you will carry out:



Two 1-hour observations plus 20 minutes Q&A



Face-to-face or remote



In a suitable assessment environment



With an end-point assessor



### Key point

You will be observed delivering two 1-hour coaching sessions with 2 different coachees, this can be face-to-face or remote.



## Do

- Review the criteria associated with the observation and Q&A
  - this can be found in the EPA kit
- Ensure that the coaching sessions can be carried out in an appropriate location to ensure privacy
- Use the planner to plan how you will demonstrate the skills you have that are associated with the observation and Q&A
- Ensure that you seek permission from each coachee before the assessment takes place and make them aware that they will be recorded
- Be prepared to answer questions on activities not observed and follow-up questions that clarify your responses



## Don't

- Forget to plan
- Forget to bring your ID
- Forget to adhere to the timings you have been given and check that you can use the venue's conferencing software



## Next steps

- Results can take up to 7 working days to be confirmed
- Your manager/training provider will inform you of the results



## Resits

- If you do not achieve a pass result on the observation with Q&A you can resit the assessment



**Use the table below to plan and prepare for the observation and Q&A**

Standard area	Key points to remember
<b>Coaching tools, models and theories</b>	
<b>The coaching process</b>	

**Building  
relationships**

**Self-awareness**