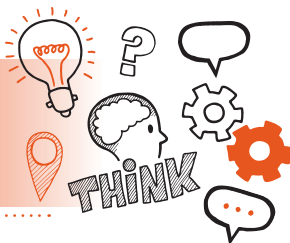


Think about
Professional Discussion
Level 3 Spectacle Maker AP01



On the day of assessment, you will carry out:



A 60-120-minute professional discussion



Remote or face-to-face



Under exam conditions



With an end-point assessor



Key point

You will be able to use any on-programme evidence you have collected to support you during the professional discussion.



Do

- Review the criteria associated with the professional discussion – this can be found in the EPA-kit
- Ensure a quiet room is available and that there are no interruptions or distractions
- Be prepared to take part in scenario and product-based discussions
- Reflect on your on-programme learning and experience



Don't

- Forget to plan
- Forget to tell your colleagues that you are being assessed
- Forget to bring your on-programme evidence with you to the assessment



Next steps

- Results can take up to 12 working days to be confirmed
- Your manager/training provider will inform you of the results



Resits

- If you do not achieve a pass result on the professional discussion, you can resit the assessment



Use the table below to plan and prepare for the professional discussion

Standard area - mandatory	Key points to remember
Knowledge - Health and safety	
Knowledge - Materials	

Knowledge -
Tools

Knowledge -
Quality

Knowledge -
Construction
of spectacles

Knowledge
– The
manufacture,
service and
repair of
spectacles

**Skills – Health
& safety and
working
environment**

**Skills – Technical
interpretation
and
understanding**

**Skills –
Manufacturing
and repair
processes**

Skills – Quality

**Behaviours –
Quality focused**

**Behaviours –
Self-
development**