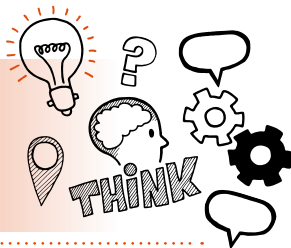


Think about  
Practical assessment with questions  
Level 2 ST0257 Large Goods Vehicle  
(LGV) Driver C and E V1.3



On the day of assessment, you will carry out:



A 120-minute practical driving assessment  
including 45 mins for questioning



Face-to-face in a suitable simulated environment



Under controlled conditions



With an end-point assessor



## Key point

The practical assessment consists of **three** components carried out in the following order:

1. Practical vehicle journey plan with questions
2. Pre-use checks with questions
3. Practical driving assessment with questions



## Do

- Review the criteria associated with the practical assessment with questions - this can be found in the EPA-kit
- Be prepared to plan a 30-minute journey to a destination you have been allocated
- Be prepared to carry out pre-journey checks in line with the DVSA guidelines for vehicle roadworthiness
- Be prepared to answer questions that check your understanding of the knowledge and skills you demonstrate
- Be prepared to demonstrate driving on a range of roads and in a range of conditions
- Remember to carry out the pre-drive checks, for example, tyres, lights, first-aid kit, fire extinguisher, tail lift, secure load



## Don't

- Forget to plan
- Forget to wear PPE, especially safety gloves
- Forget to meet the timescales you are given to work to
- Forget to bring your ID
- Forget to show good customer service and going 'above and beyond'



## Next steps

- Results can take up to 7 working days to be confirmed
- Your manager/training provider will inform you of the results



## Resits

- If you do not achieve a pass result on the practical assessment with questions you can resit the assessment.



## Use the table below to plan and prepare for the practical assessment.

**(P)** indicates pass criteria

**(D)** indicates distinction criteria

Assessment criteria	Key points to remember
<b>Vehicle preparation</b>	
<b>(P)</b> Carry out the safe preparation and safety checks for an LGV vehicle and load in accordance with DVSA and organisation's guidelines and complete the appropriate documentation	
<b>(P)</b> Plan a safe and efficient route	
<b>(P)</b> Make necessary changes to planned route reacting to traffic or weather situations	
<b>(D)</b> Identify individual axle weights and adjust how this affects vehicle handling depending on the load and take appropriate action to adjust accordingly	

## Assessment criteria

## Key points to remember

### Drives safely

**(P)** Handle the LGV safely on public and private roads not endangering other road users by your actions

**(P)** Park the vehicle safely in a restricted space and safely use and position vehicle fitted equipment

**(P)** Takes account of the size and type of the vehicle and trailer, ensuring a safe distance is maintained at all times

**(P)** Proficiently control the vehicle in a range of traffic situations and in consideration of the weather conditions, e.g., urban/country environment, peak-time, snow, windy conditions

**(D)** Explain the consequences of a given scenario outlining the danger to individuals or the impact on the vehicle

### Professionalism

**(P)** Arrive on time, wearing appropriate company-issued PPE and any company uniform

## Assessment criteria

## Key points to remember

### Use of equipment & IT

**(P)** Use digital tachograph and any onboard telematics, GPS, cameras, reversing sensors (where fitted)

### Route planning

**(P)** Plan the most economical route to the directed location adapting route to avoid known traffic hotspots/hazards, taking into account congestion, low bridges and weight restrictions

**(D)** Justify your chosen route

**(D)** Explain the potential impact of selecting an alternative route

**Trailer**

**(P)** Check the trailer number against the manifest/paperwork and connect it following company procedures

**(P)** Safely open and restrain trailer and vehicle body doors

**(D)** Explain the consequences of a given fault