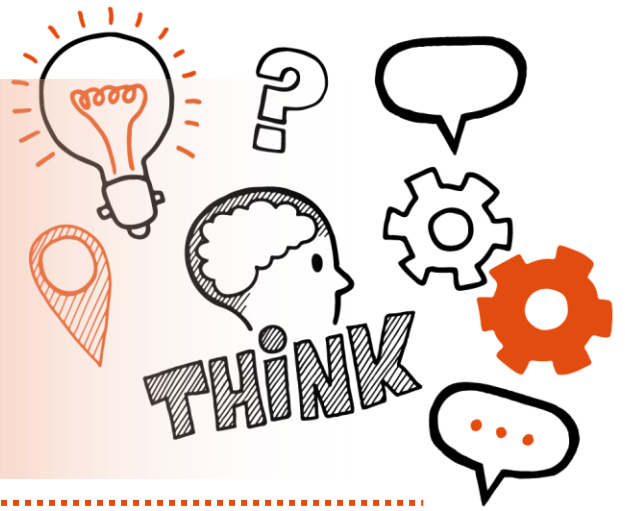


Think about

Project report and presentation with
questioning

Level 3 ST0550 Safety, Health and
Environment Technician V1.2 AP03



On the day of this assessment you will carry out:



Typically a 20-minute presentation and a 20-minute
questioning session (+10%)



Remote or face-to-face



In a suitable, controlled environment free from
distraction



With an end-point assessor and a representative
from Highfield if necessary for moderation purposes



Key point

You will have already submitted your written project report and any
presentation materials by the end of week 12 of your EPA.



Do

- Review the criteria associated with the project report and presentation with questioning- this can be found in the EPA Kit and in the table at the end of this document
- Review relevant legislations, regulations and your organisation's policies and procedures
- Ensure a quiet room is available and that there are no interruptions
- Be prepared to answer at least 5 questions and any follow-up questions that your assessor may ask



Don't

- Forget to bring your ID
- Forget to plan
- Forget to refer to your work project to demonstrate your knowledge



Next steps

- Results can take up to 7 working days to be confirmed
- Your manager or training provider will inform you of the results



Resits

- If you do not achieve a pass result on the project report and presentation with questioning, you can resit the assessment





Use the table below to plan and prepare for the project report and presentation with questioning

(P) indicates pass criteria

(D) indicates distinction criteria

Assessment criteria	Key points to remember
Company Health & Safety and Environmental Policies including culture	
(P) Describe how you support the development, management and implementation of a company's SHE Management Systems as well as how you have delivered training and coaching to relevant staff whilst embedding an ethos of teamwork (S2)	
(P) Provide advice on the practical implementation of the company's SHE policies and processes, work collaboratively in a team to apply generic industry guidance whilst ensuring that you positively adapt to change and positively influence behaviour in others to achieve desired outcomes, to resolve conflicts and commit to a policy of equality and diversity. (S3, B2, B3, B7)	



(D) Justify the need for new aspects of a management system to be implemented. (S2, S3)

Hazards

(P) Identify hazards and describe how to deal with them in accordance with workplace instructions and legal requirements; evaluate workplace instructions, working practices, aspects that could cause harm, and the highest elements of risk hazards relevant to own workplace. (S4)

(D) Evaluate the prioritisation of hazard control measures implemented to reduce risk to the workforce. (S4)



Presentation and Communication

(P) Describe how you use appropriate language to present a SHE message that is impactful and engages the audience's attention, ensuring you can deal with any challenges and reflect on your own performance. (S1, B1)

(P) Outline how to write and present a business justification e.g., cost/benefit analysis to influence managers. (K11)

(D) Evaluate alternative presentation techniques for different audiences whilst ensuring the SHE message maintains its impact. (S1)



Financial Implication

(P) Identify where decisions have a financial cost and describe where you have assisted to develop a budget. (S12)

V2

