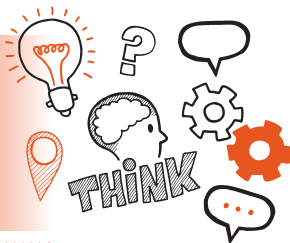


# Think about Professional Review Level 2 Passenger Transport Driver – Coach AP02



On the day of this assessment you will carry out:



A 60-minute professional review



Face-to-face



In a controlled environment



With an end-point assessor



## Key point

You must evidence your understanding of the required criteria, not just knowledge recall.



## Do

- Review the criteria associated with the professional review – this can be found in the EPA kit
- Ensure a quiet room is available and that there are no interruptions or distractions
- Be prepared to discuss and reflect on your on-programme experience and learning
- Bring a copy of your journey log to refer to during the assessment



## Don't

- Forget to plan
- Forget to tell your colleagues that you are being assessed
- Forget to bring your ID



## Next steps

- Results can take up to 7 working days to be confirmed.
- Your manager/training provider will inform you of the results.



## Resits

- If you do not achieve a pass result on the professional review you can resit the assessment.



**Use the table below to plan and prepare for the professional review.**

Standard area	Examples of how I can evidence this:
Core knowledge	
Core skills and competence	

Standard area	Examples of how I can evidence this:
Behaviours	
Specific coach requirements	

