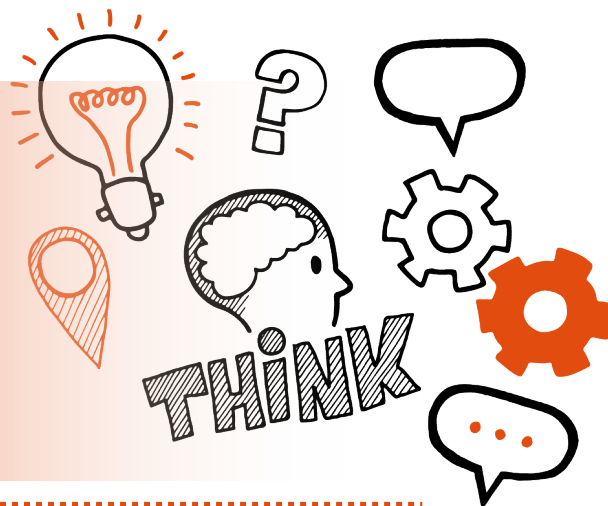


Think about

Practical assessment

Level 2 ST0259 Supply Chain
Warehouse Operative v1.0



On the day of this assessment you will carry out:



A 1-hour practical assessment



Normal place of work



Under controlled conditions



With an end-point assessor



Key point

During the practical assessment you must operate at least one vehicle/MHE safely and efficiently and use IT systems and other relevant technology and systems.



Do

- Review the criteria associated with the practical assessment - this can be found in the EPA Kit and in the table at the end of this document
- Review relevant legislations, regulations and your organisation's policies and procedures
- Be prepared to answer questions and any follow-up questions that your assessor may ask



Don't

- Forget to bring your ID
- Forget to plan



Next steps

- Results can take up to 7 working days to be confirmed
- Your manager or training provider will inform you of the results



Resits

- If you do not achieve a pass result on the practical assessment, you can resit the assessment





Use the table below to plan and prepare for the practical assessment

(P) indicates pass criteria

(D) indicates distinction criteria

Assessment criteria	Key points to remember
Safe use of equipment, vehicles and machinery	
(P) Operate at least one vehicle safely and efficiently (S1)	
(P) Use and position vehicle fitted equipment (S2)	
(P) Safely and efficiently load and unload items (S5)	



(P) Use correct equipment and procedures to record receiving or stowing goods (S7)	
Environmental management	
(P) Manage waste effectively (S4)	
(P) Select, prepare and use most appropriate packaging materials (S6)	
Working in accordance with warehousing systems and processes	
(P) Safely and efficiently move, handle, pack and unpack different items (S3)	



<p>(P) Use IT systems and other relevant technology and systems (S8)</p>	
Distinction criteria	
<p>(D) Go above and beyond what is expected of your role, for example increased awareness and application of health and safety skills, dealing with more complex situations, spatial awareness and demonstration of particularly fast, efficient and new ways of working and improved ways of working</p>	
<p>(D) Demonstrate advanced driving skills and techniques in relation to relevant vehicles</p>	
<p>(D) Demonstrate a keen interest in the sector and in the job and in keeping up to date with industry changes</p>	



(D) Demonstrate originality in the consistent, effective application of technical processes, resources, techniques and materials	
(D) Complete tasks independently to a level that far exceeds the minimum standard with few or no errors	
(D) Select and use appropriate skills and processes, justifying your choices	
(D) Be able to challenge where appropriate and identify solutions rather than just problems or issues	

V1.1

