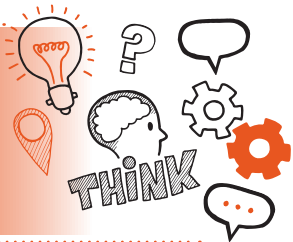


Think about  
Project report with presentation  
and questioning  
Level 3 Transport and Warehouse  
Operations Supervisor AP01 –  
Option 1 Transport



On the day of this assessment you will carry out:



A 15-minute presentation and a 25-minute Q&A session based on your project report



Remote or face-to-face



Under exam conditions



With an end-point assessor and your employer (optional)



### Key point

You will have already submitted your project report. Your presentation and answers to questions **MUST** relate to your project.



## Do

- Review the criteria associated with the project report with presentation and questioning – this can be found in the EPA kit
- Make sure you have a quiet room available where you will not be disturbed
- Ensure that you bring your project report and presentation resources with you to the assessment
- Be prepared to answer a minimum of 5 questions and any follow-up questions you may be asked



## Don't

- Forget to plan
- Forget to summarise and evaluate your project including key outcomes, specific recommendations, what went well and lessons learned for future project activity
- Forget to bring your ID



## Next steps

- Results can take up to 7 working days to be confirmed.
- Your manager/training provider will inform you of the results.



## Resits

- If you do not achieve a pass result on the project report with presentation and questioning you can resit the assessment.



## Use the table below and your project report to plan and prepare for the presentation and questioning

Standard area	Key points to remember
Operations	
Scheduling and planning	

Standard area	Key points to remember
<b>Compliance health and safety</b>	
<b>IT</b>	
<b>Communication</b>	
<b>Training and development</b>	

