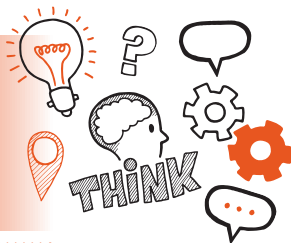


# Think about Observation Level 2 Passenger Transport Driver – Bus AP02



On the day of this assessment you will carry out:



A 60-minute observation



Face-to-face



In a realistic working environment



With an end-point assessor



## Key point

The observation must cover key activities including:

- starting or finishing a service (e.g. bringing a vehicle in and out of service, handing a vehicle over to another driver)
- operating the vehicle
- interacting with passengers and/or colleagues



## Do

- Review the criteria associated with the observation – this can be found in the EPA kit
- Review relevant safety, security and compliance procedures
- Use the planner to plan how you will demonstrate the skills and behaviours that are associated with the direct observation
- Be prepared to answer questions based on the observation once all driving activities have ceased



## Don't

- Forget to plan
- Forget to bring your ID
- Forget that the observation will be stopped if the end-point assessor deems you to be driving unsafely



## Next steps

- Results can take up to 7 working days to be confirmed.
- Your manager/training provider will inform you of the results.



## Resits

- If you do not achieve a pass result on the observation you can resit the assessment.



## Use the table below to plan and prepare for the observation.

Standard area	Examples of how I can demonstrate this:
Core knowledge	
Core skills and competence	

Standard area	Examples of how I can demonstrate this:
Behaviours	
Specific bus requirements	

