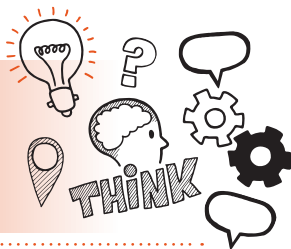


Think about  
Professional discussion  
Level 3 Fire, Emergency and Security  
Systems Technician AP02



On the day of assessment, you will carry out:



A 45-minute professional discussion



Remote or face-to-face



Under controlled conditions



With an end-point assessor



### Key point

You will have already submitted your portfolio that will be used along with other evidence, for example, self-assessment to inform the discussion.



## Do



Review the criteria associated with the professional discussion – this can be found in the EPA kit



Review relevant legislation, regulations, external and internal professional codes of conduct and your organisation's policies and procedures



Be prepared to answer scenario-based questions and give real examples



## Don't



Forget to plan



Forget to bring your self-assessment and supporting evidence to support you in the discussion



Forget to bring your ID



## Next steps

- Results can take up to 7 working days to be confirmed
- Your manager/training provider will inform you of the results



## Resits

- If you do not achieve a pass result on the professional discussion you can reattempt the assessment



## Use the table below to plan and prepare for the professional discussion

Standard area	Key points to remember
Develops and retains trust with customers and colleagues by undertaking responsibilities in an ethical and empathetic manner	

**Shows  
commitment  
through being  
punctual,  
reliable, diligent  
and professional**

**Takes  
responsibility  
for own  
judgements  
and actions  
to achieve  
quality focussed  
outcomes**

**Demonstrates  
drive and  
flexibility  
in fulfilling  
requirements  
of role**

**Takes  
responsibility  
and fulfils own  
development  
and the needs  
of others**

**Keeps up to date with best practice**

**Maintains continuous professional development**

**Works productively and engages with colleagues, clients, other trades, suppliers and the public**

**Takes responsibility for promoting a healthy and safe working environment**

**Gives consideration to appropriate use of resources and own actions taking into account the impact on environmental, social and economic factors**

**Uses initiative to seek continuous professional development opportunities**

**Shows willingness to work above and beyond what is required**

**Shares best practice with colleagues**