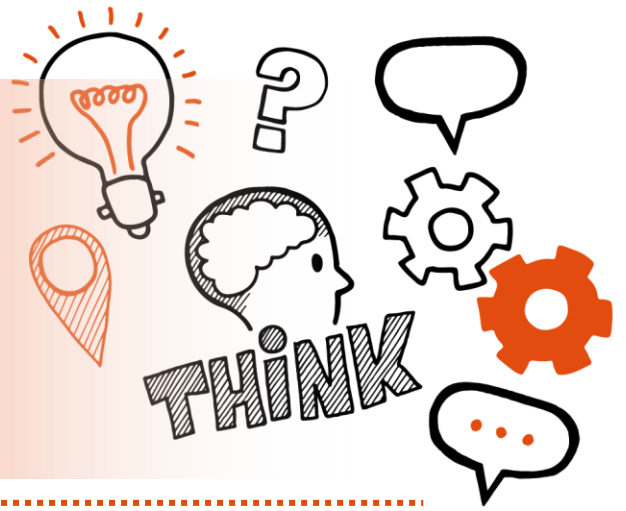


Think about

Professional discussion

Level 3 ST0217 Senior Healthcare  
Support Worker – Adult Nursing  
Support V1.2 (AP02 09/18)



On the day of this assessment you will carry out:



A 60-minute professional discussion



Remote or face-to-face



In a suitable, controlled environment free from  
distraction



With an end-point assessor



**Key point**

You will have already submitted your portfolio of evidence, which is not formally assessed, but can be used to illustrate your answers.



## Do

- Review the criteria associated with the professional discussion - this can be found in the EPA Kit and in the table at the end of this document
- Review relevant legislations, regulations and your organisation's policies and procedures
- Ensure a quiet room is available and that there are no interruptions
- Reflect on your on-programme learning and experience giving consideration to patient confidentiality



## Don't

- Forget to bring your ID
- Forget to plan
- Forget to bring your portfolio to refer to during the professional discussion



## Next steps

- Results can take up to 7 working days to be confirmed
- Your manager or training provider will inform you of the results



## Resits

- If you do not achieve a pass result on the professional discussion, you can resit the assessment





## Use the table below to plan and prepare for the professional discussion

**(P)** indicates pass criteria

**(D)** indicates distinction criteria

Assessment criteria	Key points to remember
<b>Health and wellbeing</b>	
<b>(P)</b> Describe the indicators of good physical and mental health for the demographic group you work with and describe a time where you have provided brief opportunistic advice on health and wellbeing	
<b>(P)</b> Describe a time when you noted a deterioration in an individual in your care and the actions you took	



**Duty of care and candour, safeguarding, equality and diversity**

**(P)** Explain your responsibilities in relation to safeguarding and what action you would take if you suspected abuse

**(P)** Explain the principles of equality, diversity and inclusion and can describe how discrimination occurs

**Person-centred care, treatment and support**

**(P)** Explain the meaning of person-centred care and how you apply this to your work to ensure a good experience for the individual



**(P)** Explain the meaning of 'clinical effectiveness' and describe a time where you have challenged practice in the place of work

**Communication**

**(P)** Maintain patient confidentiality throughout the professional discussion

**(D)** Discuss how you interact with other professionals including describing how you work to best practice



**Personal, people and quality improvement**

**(P)** Describe how you have used feedback to develop your own skills and performance

**(D)** Describe how you have been proactive in your own development and discuss two examples of how you have used reflection to have a positive impact on your work

**(D)** Describe how you have acted as a role model to others and discuss two examples of where you have mentored others within the scope and boundaries of your practice



**(D)** Discuss an example of when you have demonstrated supervisory leadership in your place of work

**Health, safety and security**

**(P)** Explain the meaning of 'risk' and 'risk assessment' and how you use risk assessment in your work to operate safely

**Values**

**(P)** You will be caring and compassionate, honest, conscientious and committed



## Behaviours

**(P)** Have the courage to challenge areas of concern and work to best practice

**(P)** Be adaptable, reliable and consistent

**(P)** Show resilience and self-awareness





**(P)** Show supervisory leadership

**Adult Nursing Support – Assist with clinical tasks**

**(P)** Describe the importance of skin integrity and how you undertake tissue viability risk assessments in your practice

**(P)** Describe how you have cared for wounds, drawing on a range of examples drawn from your own work



<p><b>(P)</b> Describe how you have taken samples and specimens using a range of examples drawn from your own work</p>	
<p><b>(P)</b> Explain the term 'frailty' and discuss how you have supported an individual at the end of their life</p>	
<p><b>(P)</b> Describe a time when you have identified an individual with limitations in mental capacity and discuss the impact this had on your practice</p>	

V2

