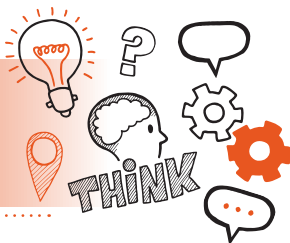


Think about  
Professional discussion underpinned by  
portfolio Level 3 Senior Healthcare Support  
Worker – Children and Young People  
Support (AP02 09/18)



On the day of assessment, you will carry out:



A 60-minute professional discussion



Remote or face-to-face



Under exam conditions



With an end-point assessor and your line manager (optional)



**Key point**

Your employer may be present to support you and confirm information but is not able to take part in the discussion.



## Do

- Review the criteria associated with the professional discussion – this can be found in the EPA kit
- Review relevant legislation, regulations and your organisation's policies, procedures, records and reports
- Make sure you have a quiet room available where you will not be disturbed
- Remember to bring your portfolio with you to the assessment, it will form the basis for the professional discussion
- Reflect on your on-programme learning and experience giving consideration to patient confidentiality



## Don't

- Forget to plan
- Forget to reflect on your personal development
- Forget to bring your ID



## Next steps

- Results can take up to 12 working days to be confirmed
- Your manager/training provider will inform you of the results



## Resits

- If you do not achieve a pass result on the professional discussion you can resit the assessment



**Use the table below to plan and prepare for the professional discussion**

Standard area - core	Key points to remember
Health and wellbeing	

**Duty of care  
and candour,  
safeguarding,  
equality and  
diversity**

**Person-centred  
care, treatment  
and support**

**Communication**

**Personal, people  
and quality  
improvement**

**Health, safety  
and security**

**Caring and  
compassionate,  
honest,  
conscientious  
and committed**

**Courage to  
challenge**

**Adaptable,  
reliable and  
consistent**

**Resilience and self-awareness**

**Supervisory leadership**

**Standard area – option  
Children and young people support**

**Assist with clinical tasks**

**Activities of daily living**

**Child development**

**Key points to remember**