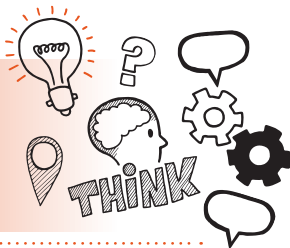


Think about  
Observation of Practice  
Level 2 Healthcare Support  
Worker AP01



On the day of assessment, you will carry out:



A 90 to 120-minute observation



Face-to-face



Under exam conditions



With an end-point assessor



### Key point

Your end-point assessor will need to stop the observation if you demonstrate any unsafe practices or breaches of professional codes of conduct.



## Do

- Review the criteria associated with the observation of practice – this can be found in the EPA kit
- Discuss the activities you need to demonstrate with your manager
- Use the planner to plan how you will demonstrate the skills you have that are associated with the observation of practice
- Review relevant legislation, regulations and your organisation's policies and procedures
- Be prepared to answer follow-up questions that further test your skills and behaviours



## Don't

- Forget to bring your ID
- Forget to tell your colleagues and to obtain consent from patients who are present while you are being observed
- Panic if a planned activity cannot go ahead, you can identify another activity to be observed



## Next steps

- Results can take up to 12 working days to be confirmed
- Your manager/training provider will inform you of the results



## Resits

- If you do not achieve a pass result on the observation of practice you can resit the assessment



## Use the table below to plan and prepare for the observation of practice

Standard area	Key points to remember
Communication (including documentation)	
Person-centred care and support	

**Personal  
and people  
development**

**Health, safety  
and security**

**Infection  
prevention  
and control**

**Moving and  
handling**

**Behaviours:**

**Dignity  
Respect  
Courage  
Adaptability  
Discretion  
Resilience  
Self-awareness**