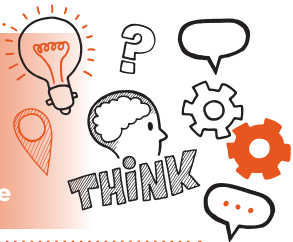


Think about  
Level 2 Healthcare Support Worker  
IfATE V1.1  
Professional discussion  
underpinned by a portfolio of evidence



On the day of this assessment you will carry out:



A 60-minute (+10%) professional discussion



Remote or face-to-face



In a suitable environment under exam conditions



With an end-point assessor and your employer  
(optional)



**Key point**

You will have already submitted a portfolio of evidence. Your portfolio is not directly assessed but will be used to underpin the professional discussion.



## Do

- Review the criteria associated with the professional discussion – this can be found in the EPA kit
- Ensure a quiet room is available and that there are no interruptions or distractions
- Review relevant legislation, regulations and your organisation's policies and procedures
- Be prepared to answer a minimum of 8 questions and any follow-up questions the assessor may ask
- Refer to your portfolio to illustrate your answers to questions
- Reflect on your performance and how you have demonstrated the knowledge, skills and behaviours of the standard



## Don't

- Forget to plan
- Forget to bring your ID
- Forget to tell your colleagues that you are being assessed



## Next steps

- Results can take up to 7 working days to be confirmed.
- Your manager/training provider will inform you of the results.



## Resits

- If you do not achieve a pass result on the professional discussion, you can resit the assessment.



## Use the table below to plan and prepare for the professional discussion

Assessment themes	Key points to remember
CPD and reflection	

Assessment themes	Key points to remember
Provision of care	
Quality	
Risk, health and safety	

